

HAM-75-00.22
HAMILTON COUNTY
CINCINNATI TOWNSHIP
SEC. 24, TOWN 4, FR. 1
CITY OF CINCINNATI



20
10
0
HORIZONTAL
SCALE IN FEET

PID NO.
89068

R/W DESIGNER
RDH
R/W REVIEWER
HGH

RIGHT OF WAY TOPO SHEET
I-75

HAM-75-00.22

130
251

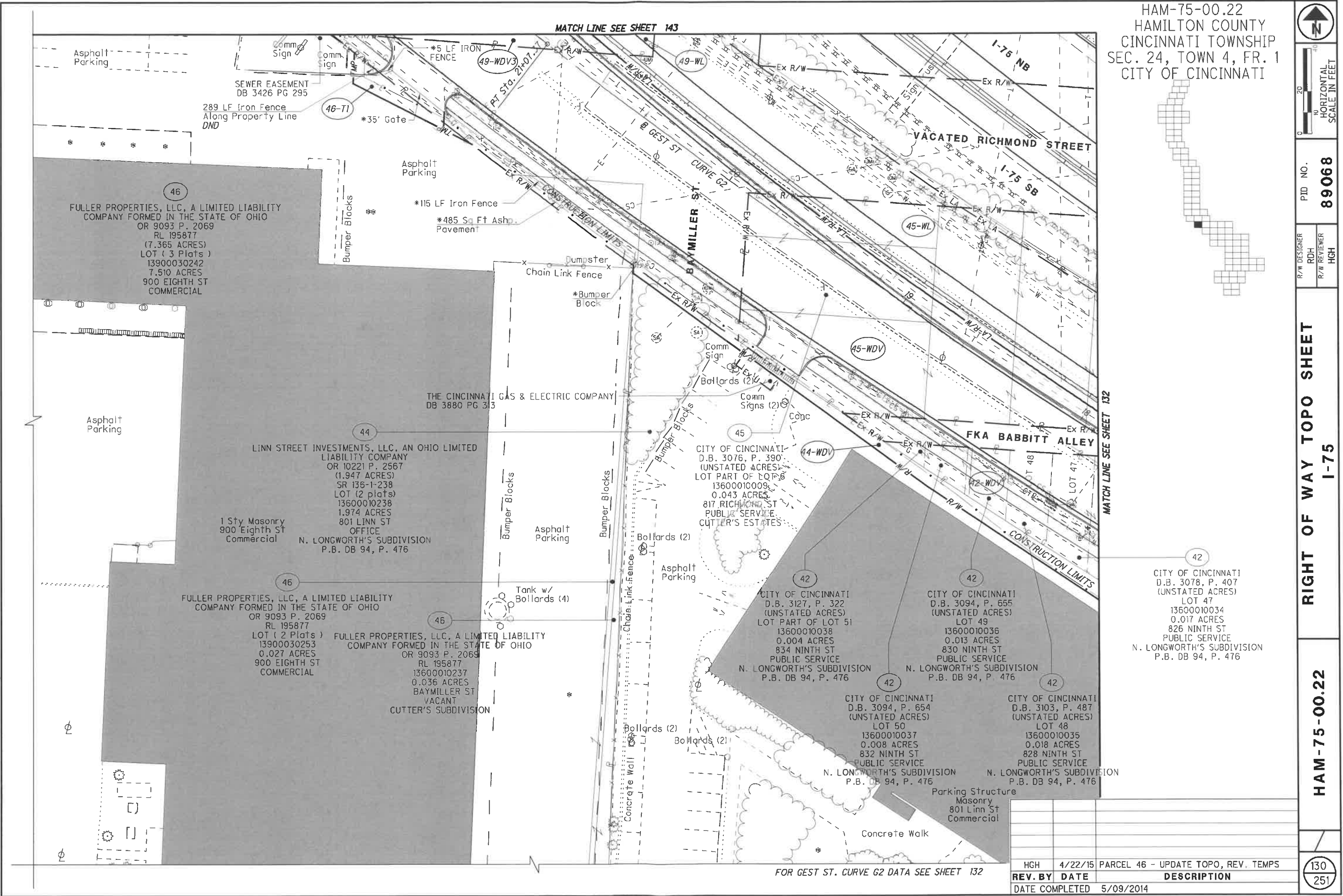
Q:\ODOT\DB\0107949A.00 - HAM-75-0022 RW Acq PID89068\row\sheets\89068RT043.dgn 5/11/2015 9:12:36 AM dbruno

MATCH LINE SEE SHEET 143

MATCH LINE SEE SHEET 132

FOR GEST ST. CURVE G2 DATA SEE SHEET 132

REV. BY	DATE	DESCRIPTION
HGH	4/22/15	PARCEL 46 - UPDATE TOPO, REV. TEMPS
DATE COMPLETED		5/09/2014



46
FULLER PROPERTIES, LLC, A LIMITED LIABILITY COMPANY FORMED IN THE STATE OF OHIO OR 9093 P. 2069 RL 195877 (7.365 ACRES) LOT (3 Plats) 13900030242 7.510 ACRES 900 EIGHTH ST COMMERCIAL

44
LINN STREET INVESTMENTS, LLC, AN OHIO LIMITED LIABILITY COMPANY OR 10221 P. 2567 (1.947 ACRES) SR 136-1-238 LOT (2 plats) 13600010238 1.974 ACRES 801 LINN ST OFFICE N. LONGWORTH'S SUBDIVISION P.B. DB 94, P. 476

46
FULLER PROPERTIES, LLC, A LIMITED LIABILITY COMPANY FORMED IN THE STATE OF OHIO OR 9093 P. 2069 RL 195877 LOT (2 Plats) 13900030253 0.027 ACRES 900 EIGHTH ST COMMERCIAL

46
FULLER PROPERTIES, LLC, A LIMITED LIABILITY COMPANY FORMED IN THE STATE OF OHIO OR 9093 P. 2069 RL 195877 13600010237 0.036 ACRES BAYMILLER ST VACANT CUTTER'S SUBDIVISION

THE CINCINNATI GAS & ELECTRIC COMPANY DB 3880 PG 313

45
CITY OF CINCINNATI D.B. 3076, P. 390 (UNSTATED ACRES) LOT PART OF LOT 6 13600010009 0.043 ACRES 817 RICHMOND ST PUBLIC SERVICE CUTTER'S ESTATES

42
CITY OF CINCINNATI D.B. 3127, P. 322 (UNSTATED ACRES) LOT PART OF LOT 51 13600010038 0.004 ACRES 834 NINTH ST PUBLIC SERVICE N. LONGWORTH'S SUBDIVISION P.B. DB 94, P. 476

42
CITY OF CINCINNATI D.B. 3094, P. 655 (UNSTATED ACRES) LOT 49 13600010036 0.013 ACRES 830 NINTH ST PUBLIC SERVICE N. LONGWORTH'S SUBDIVISION P.B. DB 94, P. 476

42
CITY OF CINCINNATI D.B. 3094, P. 654 (UNSTATED ACRES) LOT 50 13600010037 0.008 ACRES 832 NINTH ST PUBLIC SERVICE N. LONGWORTH'S SUBDIVISION P.B. DB 94, P. 476

42
CITY OF CINCINNATI D.B. 3103, P. 487 (UNSTATED ACRES) LOT 48 13600010035 0.018 ACRES 828 NINTH ST PUBLIC SERVICE N. LONGWORTH'S SUBDIVISION P.B. DB 94, P. 476

42
CITY OF CINCINNATI D.B. 3078, P. 407 (UNSTATED ACRES) LOT 47 13600010034 0.017 ACRES 826 NINTH ST PUBLIC SERVICE N. LONGWORTH'S SUBDIVISION P.B. DB 94, P. 476

HAM-75-00.22
HAMILTON COUNTY
CINCINNATI TOWNSHIP
SEC. 24, TOWN 4, FR. 1
CITY OF CINCINNATI



PID NO.
89068

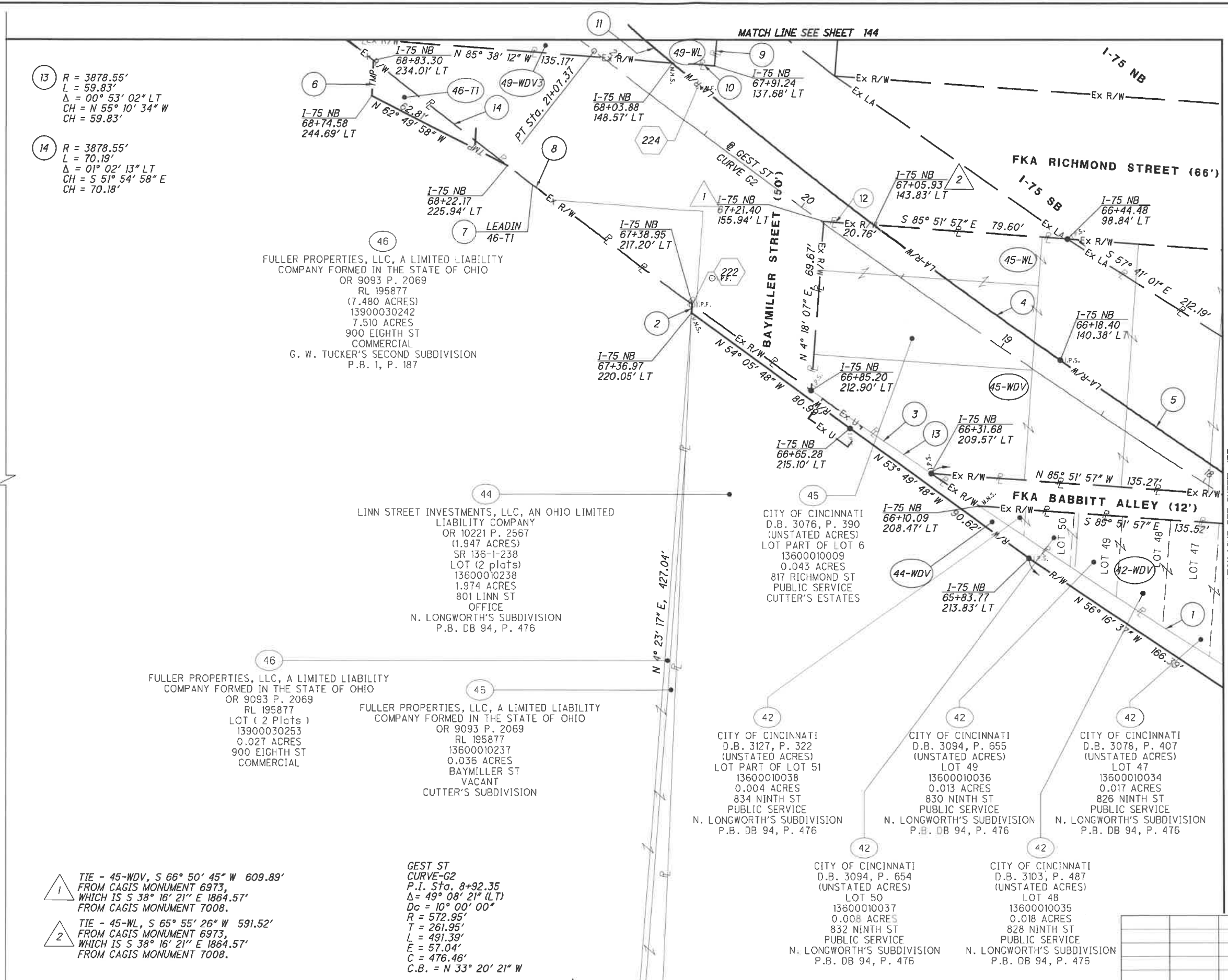
R/W DESIGNER
RDH

R/W REVIEWER
HGH

RIGHT OF WAY BOUNDARY SHEET
I-75

HAM-75-00.22

131
251



- 13 R = 3878.55'
L = 59.83'
Δ = 00° 53' 02" LT
CH = N 55° 10' 34" W
CH = 59.83'
- 14 R = 3878.55'
L = 70.19'
Δ = 01° 02' 13" LT
CH = S 51° 54' 58" E
CH = 70.18'

- 1 R = 3878.55'
L = 130.42'
Δ = 01° 55' 36" RT
CH = N 56° 56' 06" W
CH = 130.42'
- 2 S 02° 30' 18" W - 3.63'
- 3 R = 3878.55'
L = 274.99'
Δ = 04° 03' 44" LT
CH = S 55° 52' 02" E
CH = 274.93'
- 4 R = 2164.95'
L = 94.47'
Δ = 02° 30' 00" RT
CH = N 53° 57' 09" W
CH = 94.46'
- 5 R = 5386.29'
L = 99.25'
Δ = 01° 03' 21" RT
CH = N 55° 25' 54" W
CH = 99.25'
- 6 N 02° 29' 19" E - 14.63'
- 7 R = 3878.55'
L = 94.88'
Δ = 01° 24' 06" RT
CH = N 53° 08' 07" W
CH = 94.88'
- 8 R = 3878.55'
L = 304.25'
Δ = 04° 29' 40" RT
CH = N 51° 35' 20" W
CH = 304.17'
- 9 S 04° 18' 07" W - 32.06'
- 10 N 85° 38' 12" W - 17.54'
- 11 R = 2164.95'
L = 23.82'
Δ = 00° 37' 50" RT
CH = N 49° 33' 40" W
CH = 23.82'
- 12 S 85° 51' 57" E - 20.76'

1 TIE - 45-WDV, S 66° 50' 45" W 609.89'
FROM CAGIS MONUMENT 6973,
WHICH IS S 38° 16' 21" E 1864.57'
FROM CAGIS MONUMENT 7008.

2 TIE - 45-WL, S 65° 55' 26" W 591.52'
FROM CAGIS MONUMENT 6973,
WHICH IS S 38° 16' 21" E 1864.57'
FROM CAGIS MONUMENT 7008.

GEST ST
CURVE-G2
P.I. Sta. 8+92.35
Δ = 49° 08' 21" (LT)
Dc = 10° 00' 00"
R = 572.95'
T = 261.95'
L = 491.39'
E = 57.04'
C = 476.46'
C.B. = N 33° 20' 21" W

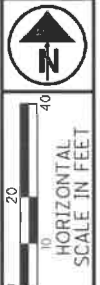
NOTE: STATION-OFFSET LABELS ARE REFERENCED FROM THE I-75 NB FOR MONUMENT TABLE SEE SHEETS 13-15

REV. BY	DATE	DESCRIPTION
HGH	4/22/15	PARCEL 46 - UPDATE TOPO, REV. TEMPS
DATE COMPLETED	5/09/2014	

Q:\ODOT_D8\0107949A.00 - HAM-75-0022 RW Acq PID890681\890681\row\sheet\89068R043.dgn 4/30/2015 1:01:52 PM dbruno

Q:\DOT_D8\0107949A.00 - HAM-75-00.22 RW Acq PID89068\890688\row\sheet\890688RT044.dgn 5/15/2014 8:05:23 AM dbruno

HAM-75-00.22
HAMILTON COUNTY
CINCINNATI TOWNSHIP
SEC. 24, TOWN 4, FR. 1
CITY OF CINCINNATI



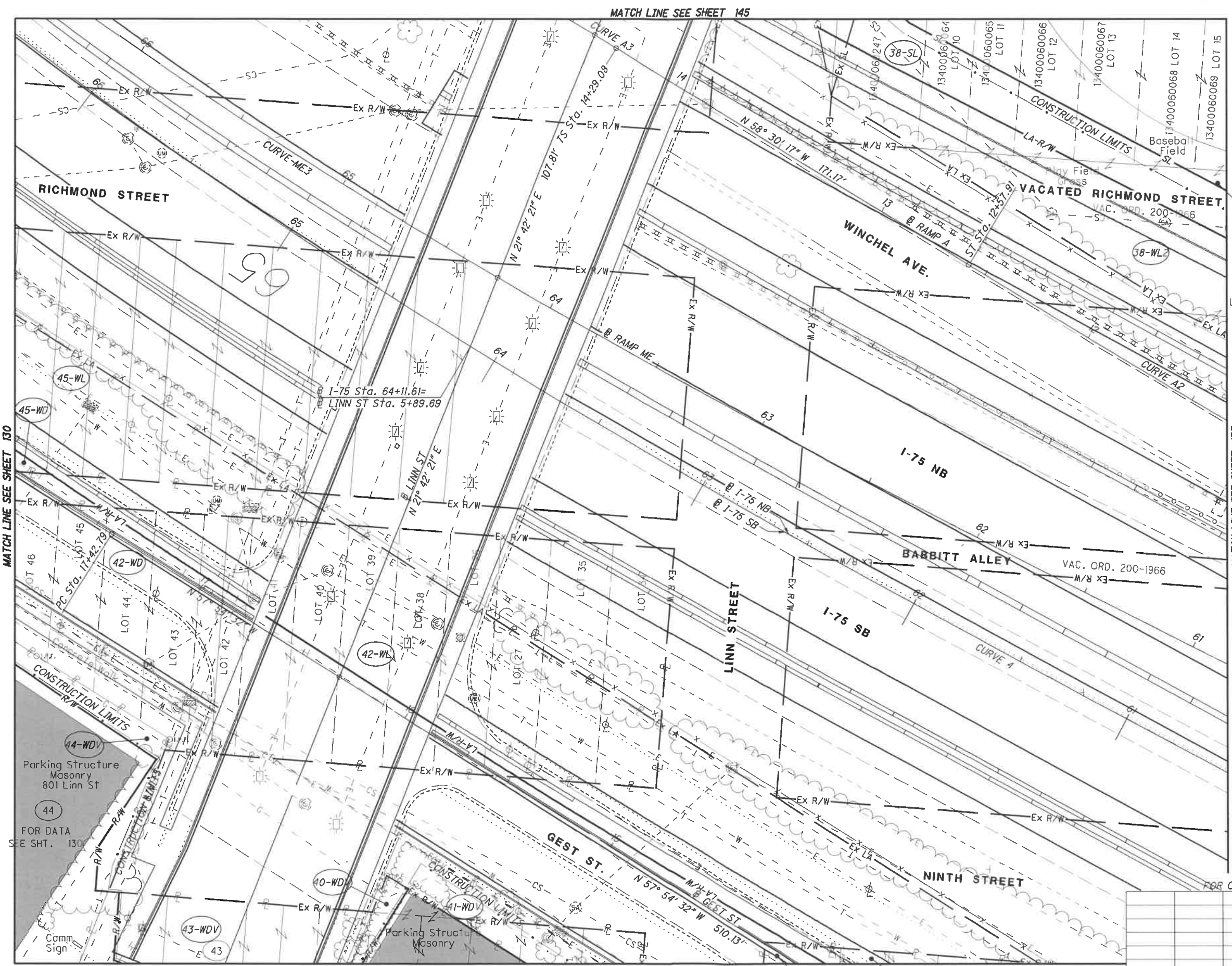
PID NO. **89068**
R/W DESIGNER RDH
R/W REVIEWER HGH

RIGHT OF WAY TOPO SHEET
I-75

HAM-75-00.22

132
251

38
CITY OF CINCINNATI
D.B. 3017, P. 50
(UNSTATED ACRES)
LOT PART OF SQUARE 4
1360020008
0.053 ACRES
749 RICHMOND ST
PUBLIC SERVICE
CUTTER'S SUBDIVISION



MATCH LINE SEE SHEET 130

MATCH LINE SEE SHEET 135

MATCH LINE SEE SHEET 145

MATCH LINE SEE SHEET 122

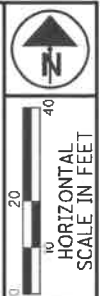
44-WDV
Parking Structure
Masonry
801 Linn St
44
FOR DATA
SEE SHT. 130

FOR DATA
SEE SHT. 122

FOR OWNERSHIP INFORMATION SEE SHEET 134

REV. BY	DATE	DESCRIPTION
	5/09/2014	

HAM-75-00.22
HAMILTON COUNTY
CINCINNATI TOWNSHIP
SEC. 24, TOWN 4, FR. 1
CITY OF CINCINNATI



PTD NO. **89068**

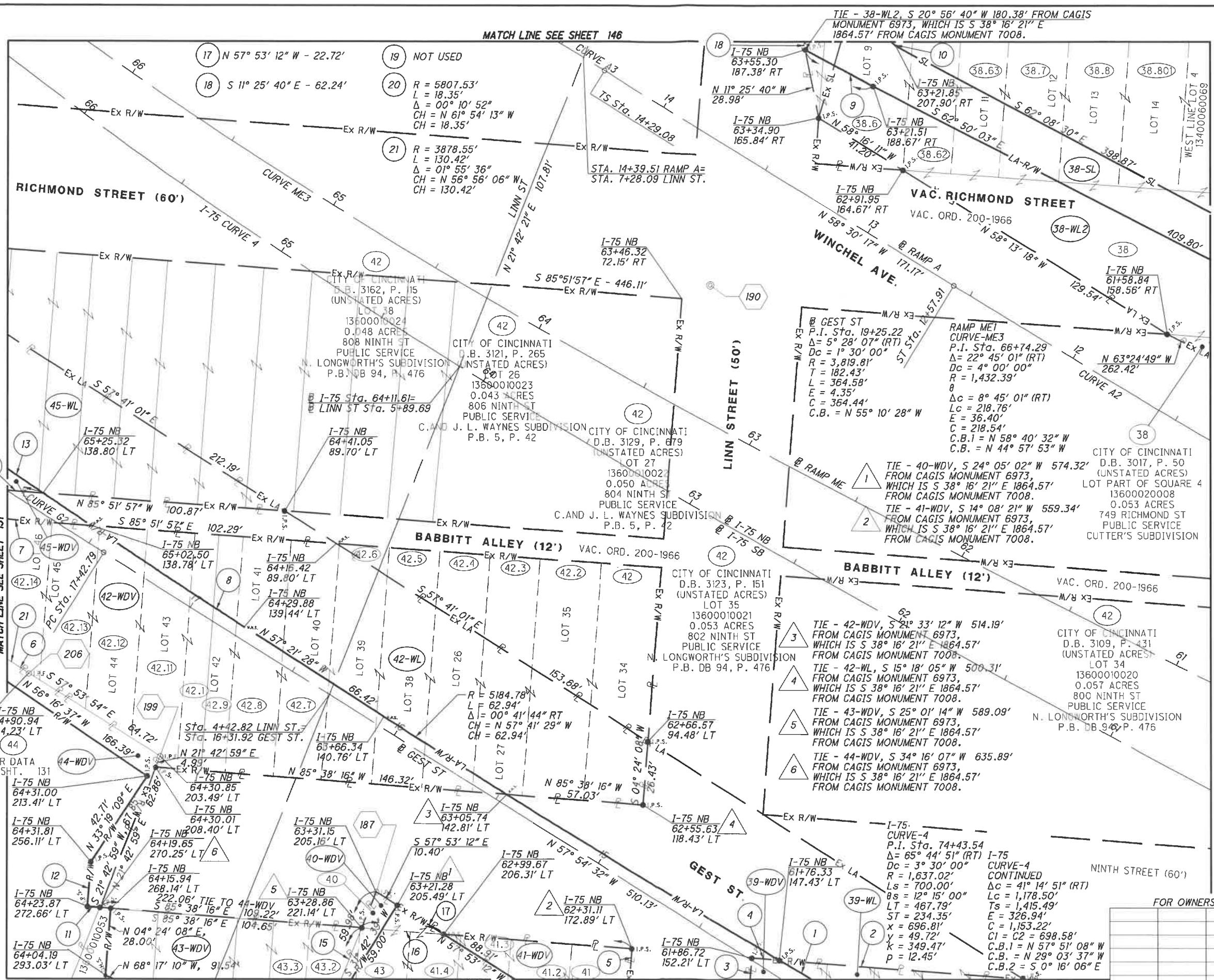
R/W DESIGNER RDH
R/W REVIEWER HGH

RIGHT OF WAY BOUNDARY SHEET

HAM-75-00.22

133
251

Q:\DOT_D8\0107949A.00 - HAM-75-00.22 RW Acq PID89068\89068\row\sheet\89068RB04.dgn 5/15/2014 8:05:29 AM dbruno



- MATCH LINE SEE SHEET 136
- 1 R = 5184.78'
L = 258.46'
Δ = 02° 51' 22" RT
CH = N 60° 56' 12" W
CH = 258.43'
 - 2 S 85° 38' 12" E - 101.46'
 - 3 N 04° 24' 08" E - 67.61'
 - 4 S 85° 38' 12" E - 11.63'
 - 5 S 04° 24' 08" W - 41.40'
 - 6 R = 3878.55'
L = 274.99'
Δ = 04° 03' 44" LT
CH = S 55° 52' 02" E
CH = 274.93'
 - 7 S 85° 51' 57" E 135.52'
 - 8 R = 5368.29'
L = 76.49'
Δ = 00° 48' 59" RT
CH = N 56° 37' 38" W
CH = 76.49'
 - 9 R = 5807.53'
L = 32.09'
Δ = 00° 19' 00"
CH = S 61° 50' 08" E
CH = 32.09'
 - 10 S 50° 33' 59" E - 48.66'
 - 11 N 85° 38' 16" W - 5.21'
 - 12 N 04° 25' 06" E - 18.69'
 - 13 R = 5368.29'
L = 99.25'
Δ = 01° 03' 21" RT
CH = N 55° 25' 54" W
CH = 99.25'
 - 14 N 85° 51' 57" W - 135.27'
 - 15 N 21° 43' 41" E - 57.95'
 - 16 N 85° 38' 16" W 34.14'

FOR OWNERSHIP INFORMATION SEE SHEET 134

REV. BY	DATE	DESCRIPTION

DATE COMPLETED 5/09/2014

NOTE: STATION-OFFSET LABELS ARE REFERENCED FROM THE @ I-75 NB
FOR MONUMENT TABLE SEE SHEETS 13-15

NOTE: FOR OWNERSHIP PARCEL INFORMATION SEE SHEET 134

MATCH LINE SEE SHEET 123

FOR CURVE A2 DATA SEE SHEET 136
FOR CURVE G2 DATA SEE SHEET 131