

# City of Cincinnati Healthy Neighborhoods Committee Meeting

March 5, 2024



**Dr. Carrie Bungler**

Vice President of Effective School Solutions

**Ms. Victoria Jamison**

Director of Thriving Families Prevention Services



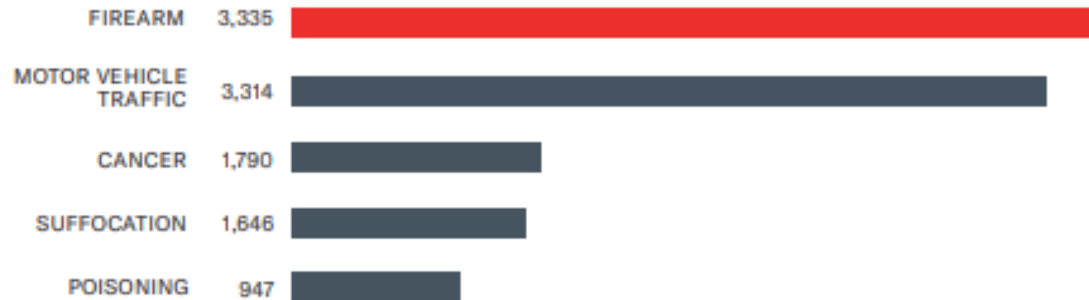
# What We Know about Youth Violence

## Community PROBLEM

**FIREARMS ARE THE LEADING CAUSE OF DEATH  
AMONG CHILDREN AND TEENS IN THE UNITED STATES**



NUMBER OF DEATHS AMONG CHILDREN/TEENS



[www.everytownresearch.org](http://www.everytownresearch.org)



# Community SOLUTION

## Preventing Youth Violence



### strategy

**PROMOTE FAMILY ENVIRONMENTS THAT SUPPORT HEALTHY DEVELOPMENT**

**PROVIDE QUALITY EDUCATION EARLY IN LIFE**

**STRENGTHEN YOUTH'S SKILLS**

**CONNECT YOUTH TO CARING ADULTS AND ACTIVITIES**

**CREATE PROTECTIVE COMMUNITY ENVIRONMENTS**

**INTERVENE TO LESSEN HARMS AND PREVENT FUTURE RISK**

### approach

- Early childhood home visitation
- Parenting skill and family relationship programs

- Preschool enrichment with family engagement

- Universal school-based programs

- Mentoring programs
- After-school programs

- Modify the physical and social environment
- Reduce exposure to community-level risks
- Street outreach and community norm change

- Treatment to lessen the harms of violence exposures
- Treatment to prevent problem behaviors and further involvement in violence
- Hospital-community partnerships

Source: *Strategies and Approaches to Prevent Youth Violence*. Center of Disease Control (CDC), 2021.

# CVI

- Right **People**
- Right **Here**
- Right **Now**

Breaking the  
**Cycle of Violence**  
with individuals most at-risk.

## Community Violence Intervention Programs

Community violence intervention (**CVIs**) aim to save those **most at risk of violence by directly intervening conflicts, providing wellness and employment opportunities, and working to address risk factors or root causes that lead to violence.**

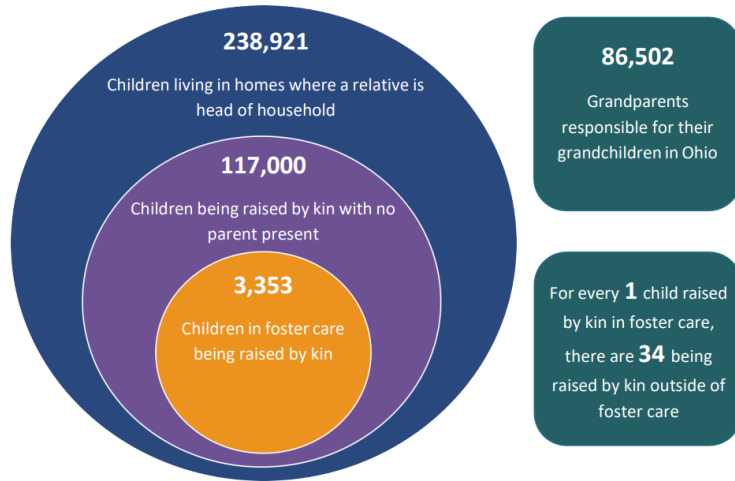


COMMUNITY JUSTICE  
ACTION FUND

# Thriving Families Prevention Services

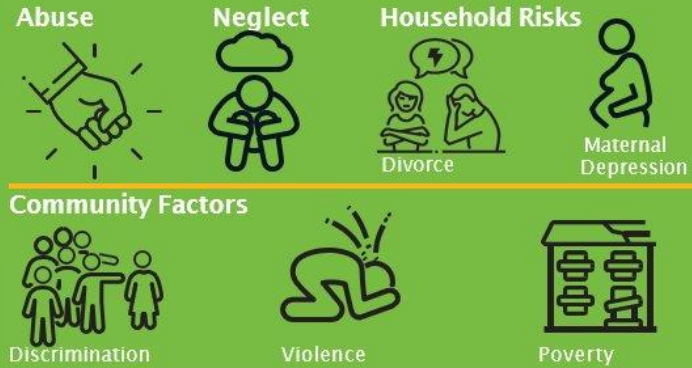
## Ohio

Grandfamilies Data



The top 2 outcomes for children being placed with a **kinship caregiver** are due to Parental Incarceration and the Death of a Parent, the highest reasons resulting from **gun violence** and **substance abuse**.

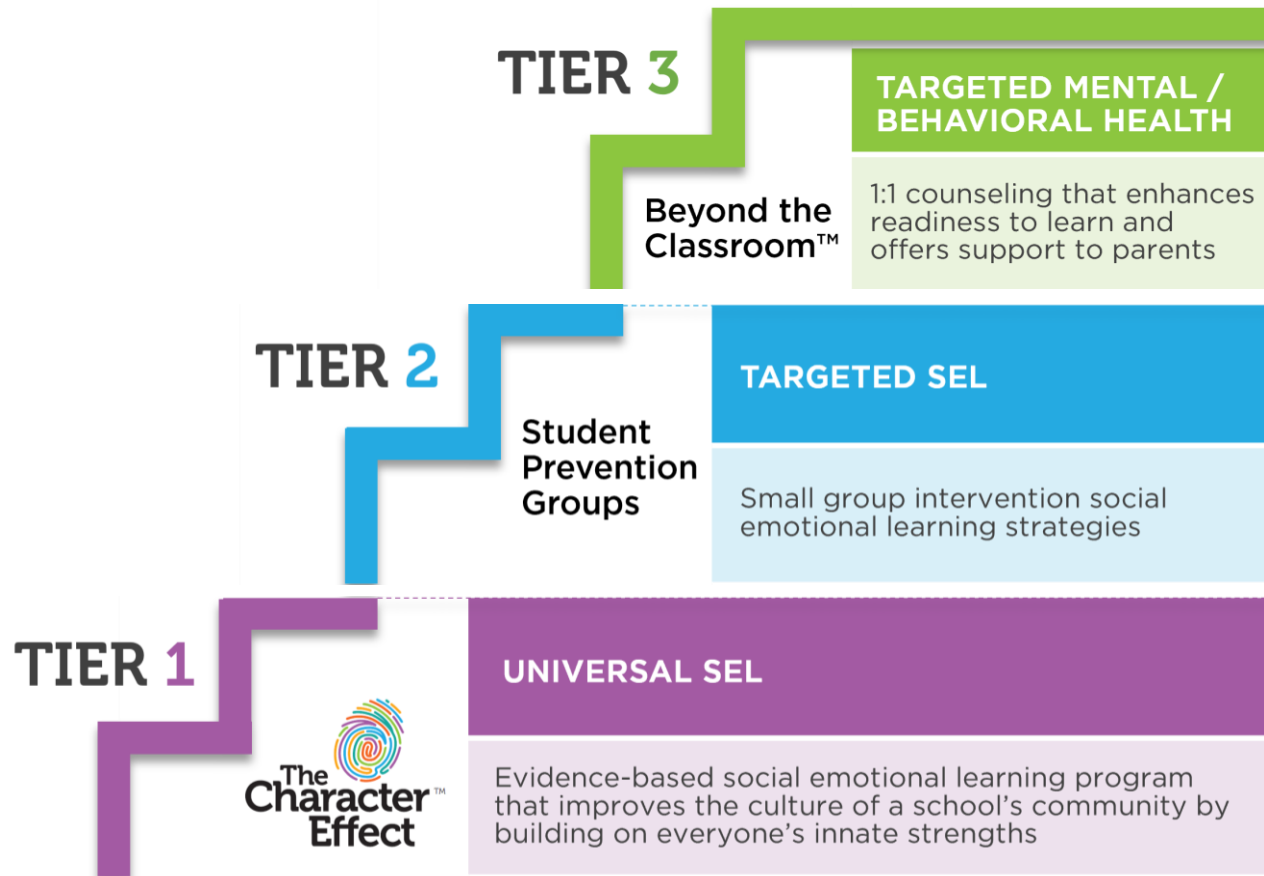
It's not what's wrong with you, it's what happened to you.  
Understanding the Impact of ACE'S:



**Education** around Adverse Childhood Experiences is a key to promoting **preventative options** to families.



# Effective School Solutions



# Thank You!

## City of Cincinnati Human Services Fund

### Your contribution supported us to provide:

- **Therapy** for **723** students in **16** schools
- **Training and coaching** for **233** teachers
- **Social Emotional Learning** of **3699** students
- **Family engagement and community support events** with over **250** parents, kin, and caregivers

## This is only the beginning.

BAPC is committed to partnering with you to ensure a **physically safe and mentally healthy** city.

