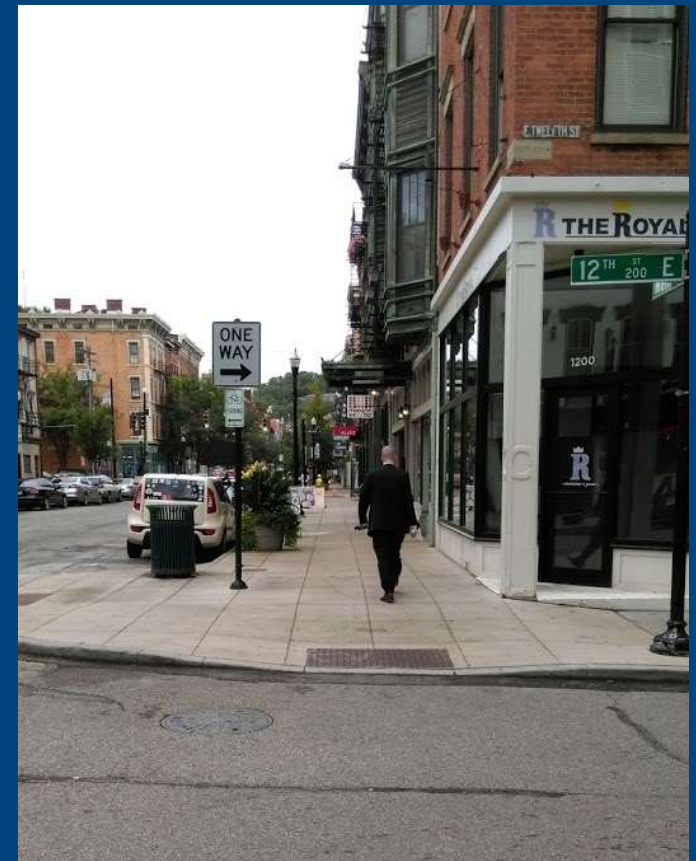


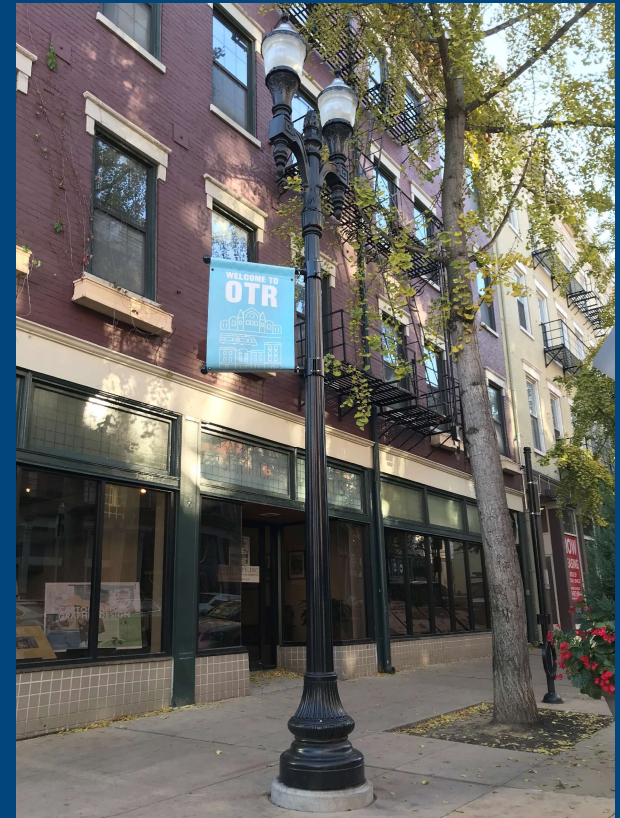
MAIN STREET (OTR) Two-way Conversion Feasibility

Public Safety & Governance Committee

November 1, 2022



Main Street: 12th to Liberty



Existing Transportation Conditions

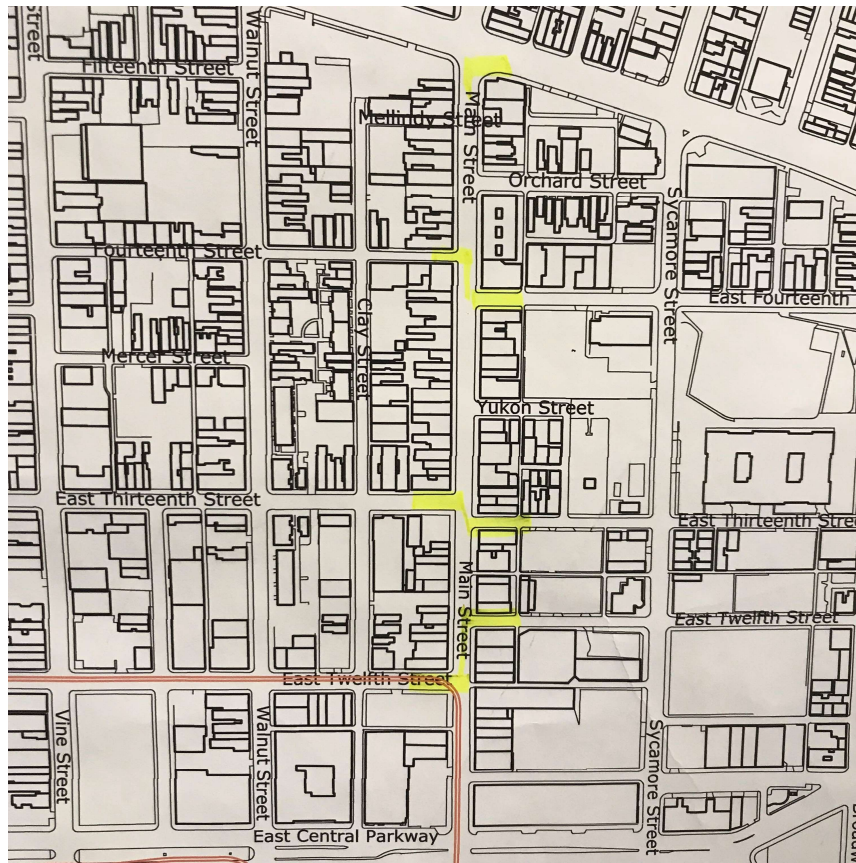
Recent Improvements:

- Added street trees on both sides of the street
- Updated pedestrian street light luminaries
- Installed curb bump outs to shorten pedestrian crossings
- Installed raised crosswalks at 12th, Woodward and Orchard Street intersections
- Recent Improvement Cost : **\$1.17 million**

Other Conditions:

- Offset intersections at 12th, 13th and 14th
- Streetcar tracks/stop station at 12th, north of Central Parkway
- Traffic volume: 5,000 vehicles per day at 13 MPH

Offset Intersections



Evaluation Process

- What problems will we solve by converting to two way?
- Assess existing conditions/value of recent improvements
- Positives and negatives
- Cost estimates to convert
- Other considerations

Positives

- Contributes to slower traffic flow
- Supports business development
- Increases storefront exposure
- Promotes pedestrian dominance
- Contributes to compact urban setting
- Creates convenient access for vehicles
- Fosters public engagement as part of approval process

Negatives

- Diminishes recent pedestrian safety improvements
- Traffic impact analysis needed
 - Pedestrian crossings more difficult to negotiate
 - Offset intersections complex for pedestrians, vehicles
 - On-street parking impacts deliveries/bus stop locations
 - Vehicles behind bus stops lead to congestion
 - Turning movements will require review of street parking layout
 - Reconfiguring sidewalks, ramps and signals at some intersections

Cost to Convert

- Estimated conversion costs include:
 - \$ 204,000 for 12th Street
 - \$ 128,000 for 13th Street
 - \$ 173,000 for 14th Street
 - \$ 93,000 for Liberty Street

Total: **\$598,000.00**

Other Considerations

- All intersections must be part of the conversion
 - Disruptive for businesses, traffic flow
- Two-way not feasible between Central Parkway and 12th due to streetcar
- Complex process to convert:
 - Robust community engagement
 - Engineering and survey
 - Review/approval by the Community, Planning Commission and City Council

Questions?

