



Bethany House...

ONE STEP
CLOSER TO HOME
FOR CINCINNATI'S CHILDREN

City of Cincinnati
Affordable Housing Subcommittee

March 2021

Cincinnati's Homeless Providers

Single Men

Shelterhouse
(Barron Center)

City Gospel
Mission

Single Women

Shelterhouse
(Hatton Center)

Teens/Youth

Lighthouse
(Sheakley
Center
& Mecum House)

Families

Bethany House

The Salvation
Army

YWCA

Interfaith
Hospitality
Network



Our Community's Urgent Need

Greater Cincinnati continues to see high demand for family homelessness services, but the regional response system is unable to meet the need:

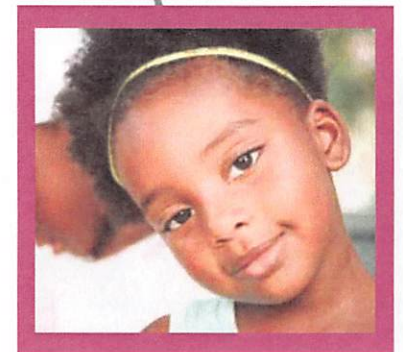
	# Families Calling to Help	Families Receiving Services
2018	1,400	44%
2019	1,700	27%
2020	2,100	21%

The need continues to grow:

- High family poverty rate
- Drastic shortage of affordable housing

Recent analysis* estimates homelessness will increase by 40-45% due to the COVID-19 crisis.

**Study from Columbia University*



Bethany House

Founded by Sisters of Charity in 1983, Bethany House is the region's largest service provider for homeless families.

Our holistic approach addresses both a family's urgent needs and seeks to prevent repeat episodes of homelessness.

Serving 60% of the families experiencing homelessness and 66% of the children in our community, Bethany House has a life-changing impact on thousands of homeless parents and children every year.



The Faces of Local Homelessness

The families served at Bethany House reflect the demographics of poverty in our community. People of color disproportionately experience homelessness locally, which has a tremendous impact on children and contributes to intergenerational cycles of poverty for families.



The average family is a single mom, 29-30 years old, with 2-3 children.

95% of our families are led by a single mom.

85% of our families are African American.

70% of family members are children - most under age 6.

100% of our families live in extreme poverty.



BETHANY
house services

Root Causes of Family Homelessness

- Lack of affordable housing
- Generational poverty
- Lack of education or skills
- Domestic violence
- Unemployment
- Low paying jobs
- Mental Health issues and Physical Health issues
- Cognitive delays or disabilities
- Challenges of raising children alone

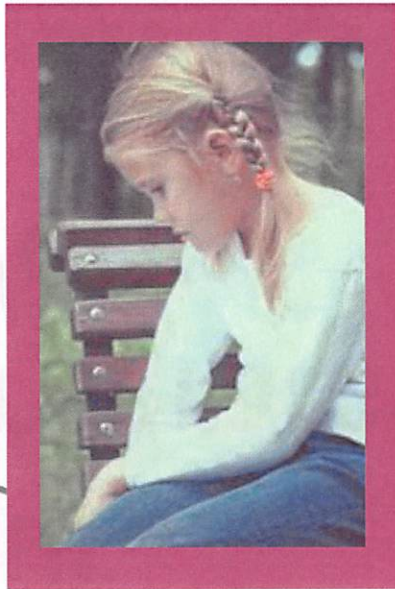


Children Bear the Brunt of Homelessness



Family homelessness has a significant and life-changing impact on children. Children bear the brunt of homelessness, as homeless children are:

- Sick and hungry twice as often
- Change schools seven to eight times per year
- Twice as likely to repeat a grade
- One-to-two years behind in school
- Diagnosed with twice the average rate of learning disabilities
- By the time homeless children are eight years old, one in three has a major mental health disorder.



We must do more to break the cycle of generational homelessness in families

Our Programs Work

96%

of families leaving shelter moved to positive housing

95%

of families who exited shelter have remained housed

92%

of families who graduated from housing programs have not returned to homelessness



Our Current Challenge

Decentralized & Aging Facilities

- 7 current facilities—5 shelters & 2 admin
- Shelters are at maximum capacity
- 3 shelters are less effective “apartment style”
- 3 buildings are 110+ years old
- Maintenance is very expensive
- Moving staff and supplies between shelters is time-consuming and costly
- No “flex” space for peak times
- De-centralized model limits programming



- Private family bedrooms
- On-site medical and mental health care
- Life skills and job readiness programs
- 24/7 support, safety & security
- Classrooms for adult education
- Children's programming, learning, and play areas
- Flexible space for "overflow"

A New Family Shelter & Comprehensive Services Center

To achieve this vision, Bethany House is building a new family shelter and comprehensive services center designed to help homeless families and children achieve housing stability and long-term self-sufficiency.

Funding for the land purchase was provided by the City of Cincinnati.



Life-Changing Holistic Services

Holistic services - prevention, emergency services, re-housing - address current homelessness and prevent repeat episodes of homelessness.

In 2020 Bethany House provided services to over 2,300 people—1600 were children; 1200 were served in multiple programs.

1

Serve More Families

Providing onsite partner services and housing families in one location will allow us to increase capacity by **100 additional families (400 individuals)** each year.

2

Deepen Support Services

More services like medical and mental healthcare, life skills classes, and job readiness programs will be available onsite along with 24/7 support and security.

3

Improve Long-Term Outcomes

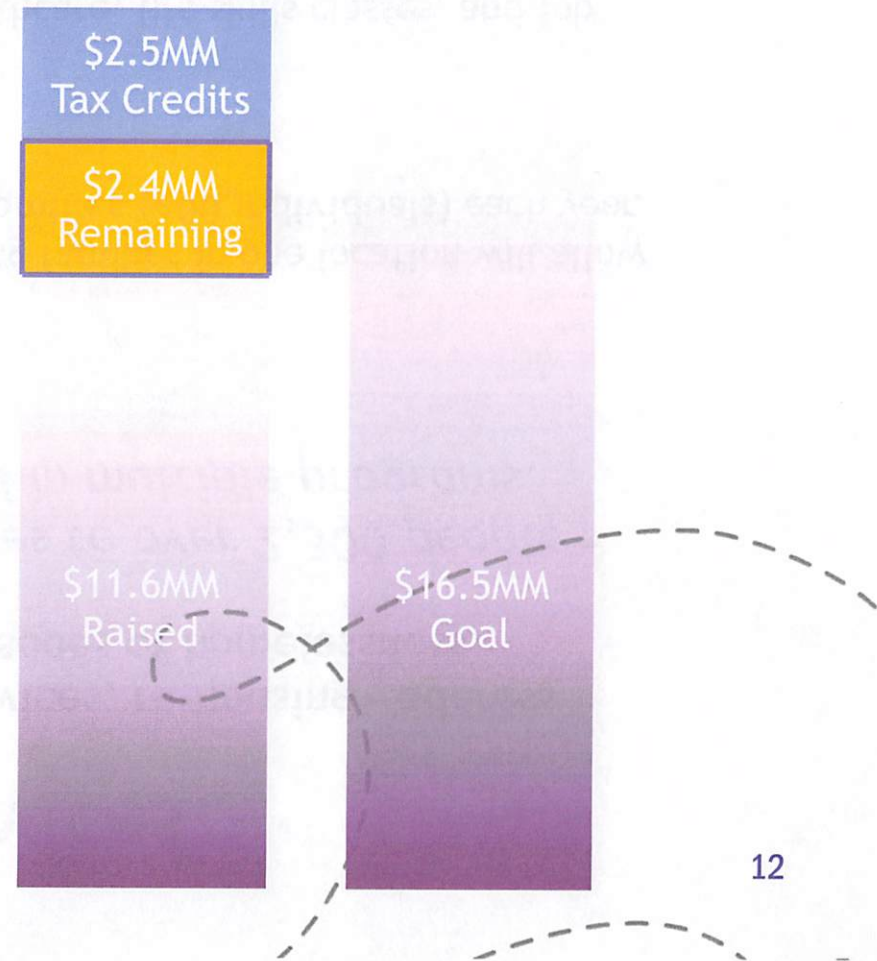
Expanding our reach and services will make a direct impact on the unmet need in our community, help more families reach long-term stability, and reduce the cycle of generational homelessness and poverty in our community.



Capital Campaign

Bethany House launched a public-private capital campaign to raise the estimated \$16.5 million needed to build the new shelter and comprehensive services center. We seek to leverage public, private and tax credit support to make this project possible.

More than \$11.6 million has been raised to date, and we have a time-sensitive opportunity for New Markets Tax Credits, which could provide up to \$2.5 million for the project.



Bethany Homes

24 Units of Affordable Housing



Bethany Homes provides permanent, safe, well maintained, affordable housing for low-income families, most of whom are supported by a single mom.