

2022-2023 Department of Transportation and Engineering Infrastructure Reports

Department of Transportation and Engineering



WE MOVE CINCY

DOTe reports on our Major Capital Programs- Roads, Bridges, Walls, Traffic Signals, Streetlighting



Reports Highlight

The reports submitted to Council summarize the following activities associated with maintaining our assets including:

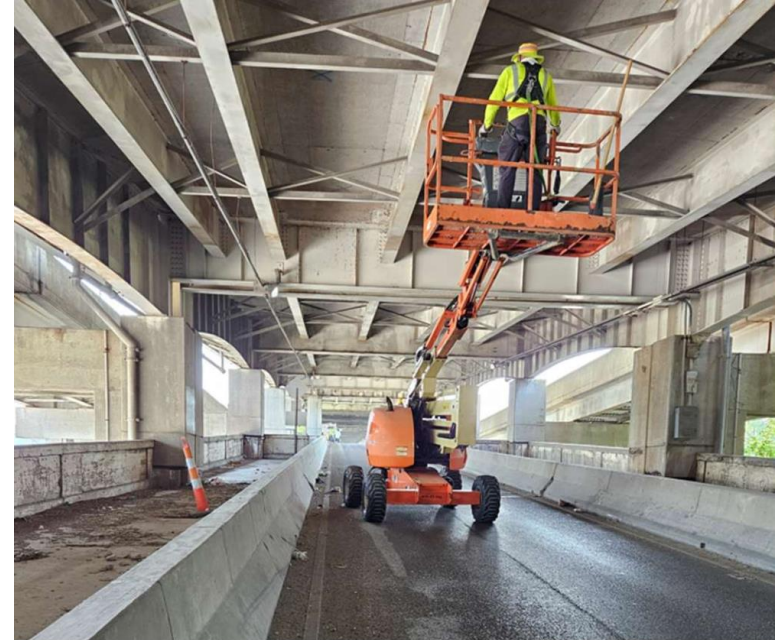
1. Inspection efforts.
2. Condition assessment.
3. Funding.
4. Planning and prioritization of projects.

They serve as a report card of sorts.



Inspection

- Bridges
 - DOTE inspects all bridges on, over, or under public roadways within the City (excluding bridges inspected by ODOT)
 - Reports on 71 City, 27 County, and 8 Wasson Way all maintained by DOTE
- Walls
 - DOTE inspects 264 walls within the City
 - Reports a structural condition on each
- Roadways
 - DOTE inspects 2,892 lane miles
 - Reports a pavement condition index
- Traffic Signals
 - DOTE inspects 800 traffic signals
 - Performs annual preventive maintenance
- Streetlights
 - DOTE inspects City owned gas and electric lights
 - Performs as-needed repairs



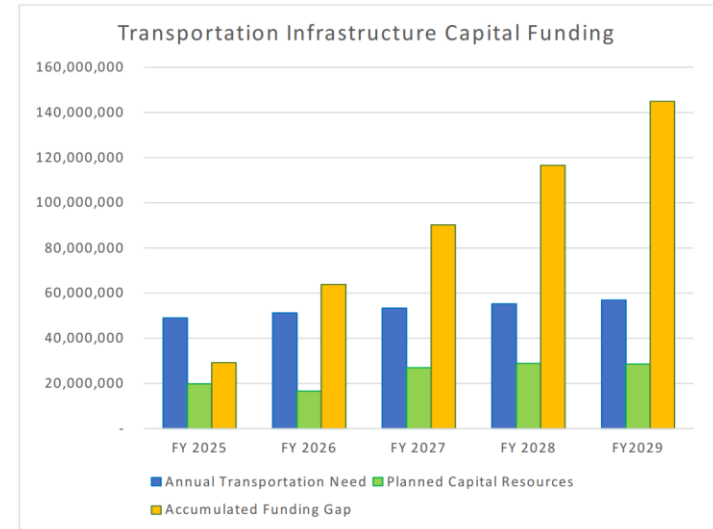
Condition Assessment Highlights

- Bridges
 - Goal is to maintain a weighted average of 6 (satisfactory).
 - 2022- 6.77; 2023- 6.77: met goal each year
- Walls
 - Goal is to maintain a satisfactory structural rating for 80% or more of the DOTE maintained walls
 - 2022- 93.4%; 2023- 93.0%: met goal each year
- Roadways
 - Goal is to maintain a weighted average of 65 (fair)
 - 2022- 65; 2023- 65: met goal each year
- Traffic Signals
 - Goal is to maintain average age of traffic signals below the end of life (30-year) mark
 - 2022- 24 years; 2023- 25 years; met goal each year
- Streetlighting
 - Goal is to maintain satisfactory operations of the streetlights maintained by DOTE



Funding

- Capital needs to meet stated condition goals outpace allocated funding.
- The accumulated funding gap increases sharply over the next 6-year planning period.



DOT E Capital Needs- All Programs

Planning and prioritization



DOTE successfully leverages outside grant dollars to close the gap.

87 grants 2022-2023

\$255 million



Will be dependent on continued outside resources.



Prioritization generally involves a worst condition first approach. Seeks to maximize leveraging of outside grants.



Questions?