



# City of Cincinnati

801 Plum Street  
Cincinnati, OH 45202

## Agenda - Final

### Healthy Neighborhoods

*Chairperson, Jan-Michele Kearney*  
*Vice Chairperson, Victoria Parks*  
*Councilmember Reggie Harris*  
*Councilmember Scotty Johnson*

---

Thursday, June 23, 2022

5:30 PM Price Hill Recreation Center, 959 Hawthorne,  
Cinti., OH 45205

---

#### SPECIAL MEETING ON CHILDHOOD TRAUMA

#### PRESENTATIONS

##### Introduction

Iris Roley, Consultant to the City Manager's Office

Attorney Virginia Tallent, Director, Cincinnati's Human Services Office

##### Need for Awareness

Childhood Trauma Emergency Group

##### Community Training on Childhood Trauma

Leah Dennis Ellsworth, UMADAOP

##### Police Training on Childhood Trauma

Melissa Adamchik, Tri -State Trauma

##### Wraparound Services

Tracy Rawls, eXclusive Services

##### Mobile Crisis Units

Linda Gallagher, Ham Co. Mental Health Recovery Services

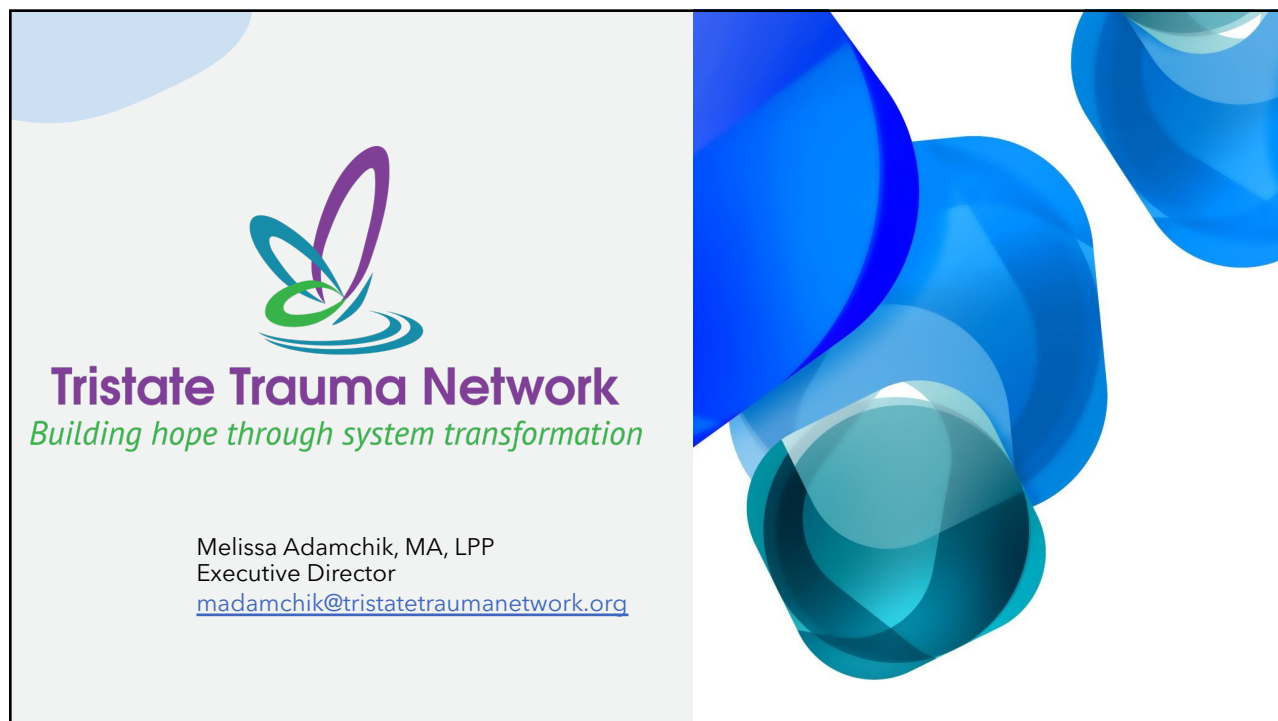
##### New Mental Health Crisis Line

Bill Vedra, Emergency Communications Center

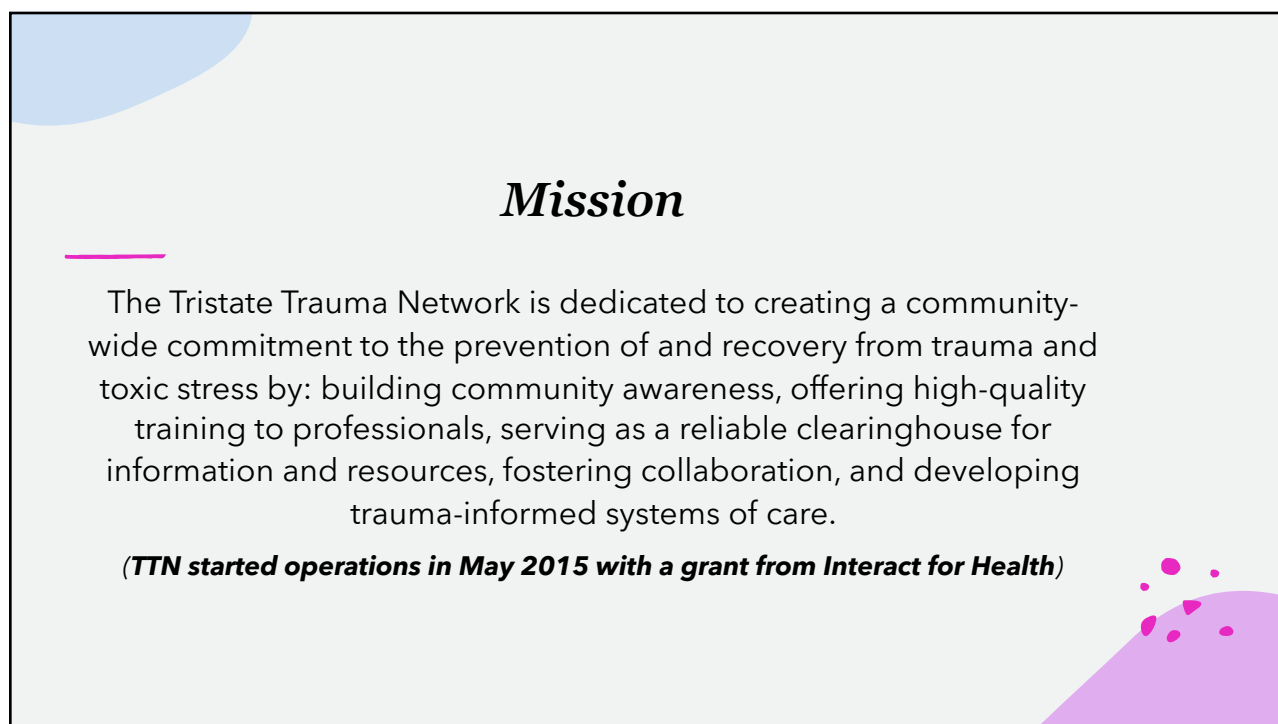
#### AGENDA

1. [202201481](#) **PRESENTATION**, submitted by Vice Mayor Kearney from Melissa Adamchik, Executive Director of Tristate Trauma Network titled Tri State Trauma Network Building Hope through system transformation.  
**Sponsors:** Kearney  
**Attachments:** [Presentation](#)
2. [202201488](#) **PRESENTATION**, submitted by Vice Mayor Kearney from Tracy Rawls, CEO/ Founder of eXclusive Services.  
**Sponsors:** Kearney  
**Attachments:** [Presentation](#)
3. [202201484](#) **PRESENTATION**, submitted by Vice Mayor Kearney from Mobile Crisis with UC Health titled Hamilton County Mental Health & Recovery Services Board.  
**Sponsors:** Kearney  
**Attachments:** [Presentation](#)
4. [202201489](#) **PRESENTATION**, submitted by Vice Mayor Kearney from Bill Vedra, Emergency Communications Center titled For Help in Crisis: 988 and 911.  
**Sponsors:** Kearney  
**Attachments:** [Presentation](#)
5. [202201351](#) **ORDINANCE (EMERGENCY)** submitted by John P. Curp, Interim City Manager, on 6/15/2022, **AUTHORIZING** the City Manager to design, install, and maintain artwork on various traffic control boxes located in the Over-the-Rhine neighborhood and the Central Business District, notwithstanding any conflicting Department of Transportation and Engineering rules and regulations or any provision of the Cincinnati Municipal Code that would prohibit the installation and maintenance of the artwork.  
**Sponsors:** City Manager  
**Attachments:** [Transmittal](#)  
[Ordinance](#)  
[Attachment](#)

ADJOURNMENT



1



2

## *Where are we now?*

June 2022:

- More than **4,500 trained** in trauma and trauma-informed approaches
- Close to **400 professionals certified** in Trauma-Responsive Care
- **32 tristate agencies** have participated in one of our local Trauma-Informed Care Learning Communities in partnership with the National Council for Mental Well-Being
- **More than 200 members** - \*Each of our members plays a vital role in creating trauma-informed systems of care and influencing change for future generations so that trauma survivors can not only heal, but thrive.
- **Variety of resources** including our list of Therapists in our network specializing in Trauma Treatment ([www.tristatetraumanetwork.org](http://www.tristatetraumanetwork.org))

3

## *What is Trauma-Informed Care?*

Trauma-informed care is an approach to engaging people that recognizes the potential presence of trauma symptoms and the role that trauma may play in an individual's life.

When an agency becomes trauma-informed, every part of its organization, management, and service delivery system is assessed and potentially modified to include a basic understanding of how trauma affects the lives of individuals.

4

## *The Four R's*

A trauma-informed program, organization, or system:

### **Realizes**

- *Realizes* widespread impact of trauma and understands potential paths for recovery

### **Recognizes**

- *Recognizes* signs and symptoms of trauma in clients, families, staff, and others involved with the system

### **Responds**

- *Responds* by fully integrating knowledge about trauma into policies, procedures, and practices

### **Resists**

- *Seeks to actively Resist* re-traumatization.

Slide  
5

5

## *Our Vision for the Community*

**All trauma survivors receive the care they need to heal and thrive.**

Recognizing, understanding, and treating trauma effectively is not universal in our communities' institutions. Through TTN's services, we see a future where ALL community members possess a greater understanding of how trauma truly impacts lives; and where health, education, legal/justice, and other professionals are better equipped to create environments of safety, recovery, empowerment and healing.

6

## *Trauma-Responsive Care Certification*

- Curriculum developed by **Mary Vicario, LPCC-S, Certified Trauma Specialist & Founder of Finding Hope Consulting, LLC** ([www.findinghopeconsulting.com](http://www.findinghopeconsulting.com))
- Launched in 2016 as a pilot; will hit **400 certified since 2017** this month!
- **Refined and updated every year** to adapt to: new neuroscience and advancements in the field of trauma treatment, practical learnings, societal challenges such as racial issues and the pandemic, information learned from working with specialized populations
- Program includes **42 hours of training and consultation over approx. 7 months**
- Participants must complete all sessions and pass a **competency test** in order to receive certification

7

## *Topic Areas Covered in Specialized First Responder TRCC*

- Neuroscience of trauma
- Impact of trauma on development
- Biologically based stress & fear responses
- ACEs (Adverse Childhood Experiences) & CATS (Compounding Adverse Toxic Stressors)
- Epigenetics & multi-generational trauma
- Secondary trauma
- Healing power of relationships
- Attachment & the need for connection
- Resilience factors in self & others
- Felt safety
- Self-care for helping professionals
- Trauma-informed culture in the workplace

8

## *Testimonial – Officer Chantia Miller, CPD*

---

Officer Miller will share her thoughts as a current participant of the TRCC Series. She has completed over half of the courses and consultation.

9

*“When enough webs of the spider join,  
they can trap a lion”*

---

-Ethiopian proverb

10



[This Photo](#) by Unknown Author is licensed under [CC BY](#)

# THE NEED FOR FAMILY INFORMED TRAUMA SERVICES TO ADDRESS CHILDHOOD TRAUMA

TRACY RAWLS



## Tracy Rawls MSW, LICDC, RA

CEO/Founder

Mrs. Rawls is a seasoned administrator, educator, speaker, trainer, and coach with over 25 years of experience in chemical dependency treatment and education. She holds her 2nd Master's degree in Social Work Administration from the University of Cincinnati where she is an active member of the University of Cincinnati Social Work Alumni, the Phi Alpha Honor Society/Pi Sigma, NAMI, NASW, and NABCI. She has worked with various programs, including Drug Court, suicide hotlines, residential treatment programs, medication-assisted treatment clinics, and numerous volunteer projects.

After years of direct practice, Mrs. Rawls finds her expertise is most useful at the executive level, where she brings others' dreams to life. She has distinguished herself by improving the frontiers of Integrated Health Services. She has steered her organization through various reforms ranging from comprehensive and intensive training of staff on therapeutic approaches, which has made them ready to combat the many facets associated with addiction and has dubbed them her "Universal Soldiers." This program strategy is one of a kind, integrating medication-assisted treatment with primary care and a full spectrum of behavioral health services, the focus of which is whole-person recovery and wellness.

Mrs. Rawls is a walking clinical and business resource, and a "jane-of-all-trades"; she is also a respected authority on state & federal policies and procedures. She has worked with various programs, including Drug Court, suicide hotlines, residential treatment programs, medication-assisted treatment clinics, and numerous volunteer projects across the tri-state area.

Spectacularly, Mrs. Rawls has successfully advanced her family's legacy by improving its catering services and feeding the therapeutic community. She enjoys reading, dancing, spending time with family, and touring the world.



# AGENDA

- INTRODUCTION
- UNDERSTANDING TRAUMA
- COMMON TYPES OF CHILDHOOD TRAUMA
- IMPACT OF CHILDHOOD TRAUMA
- FAMILY INFORMED TRAUMA CARE SERVICE
- THE FOUR R<sub>s</sub> OF FAMILY INFORMED TRAUMA CARE SERVICE
- IMPLEMENTING FAMILY INFORMED TRAUMA CARE SERVICE
- STEPS TO INTEGRATE FAMILY INFORMED TRAUMA SERVICES TO MENTAL HEALTH CARE SERVICES TO ADDRESS CHILDHOOD TRAUMA
- CONCLUSION
- QUESTIONS
- THANK YOU

# INTRODUCTION

Many children in the have experienced complex trauma. Complex trauma occurs when children are exposed to multiple traumatic events over time that are severe, pervasive, and interpersonal in nature, such as repeated abuse and neglect, that causes long-term harmful consequences. The need for family informed trauma services in the mental health delivery system is expedient as trauma has the capability of interfering with a child's ability to form secure attachments to caregivers and many other aspects of healthy physical and mental development.



# What is Trauma?

The Substance Abuse and Mental Health Services Administration (SAMHSA) describes trauma as an event or circumstances experienced by an individual, which could be physically or emotionally harmful or life threatening, which is as a result of adverse effect on the individual's functioning and wellbeing.

The adverse childhood Experiences (ACE) study, conducted by the CDC reveals that the more an individual is exposed to a variety of stressful and potentially traumatic experiences, the greater the risk for chronic health condition and health-risk behaviors later in life.

## Common Types of Childhood Trauma

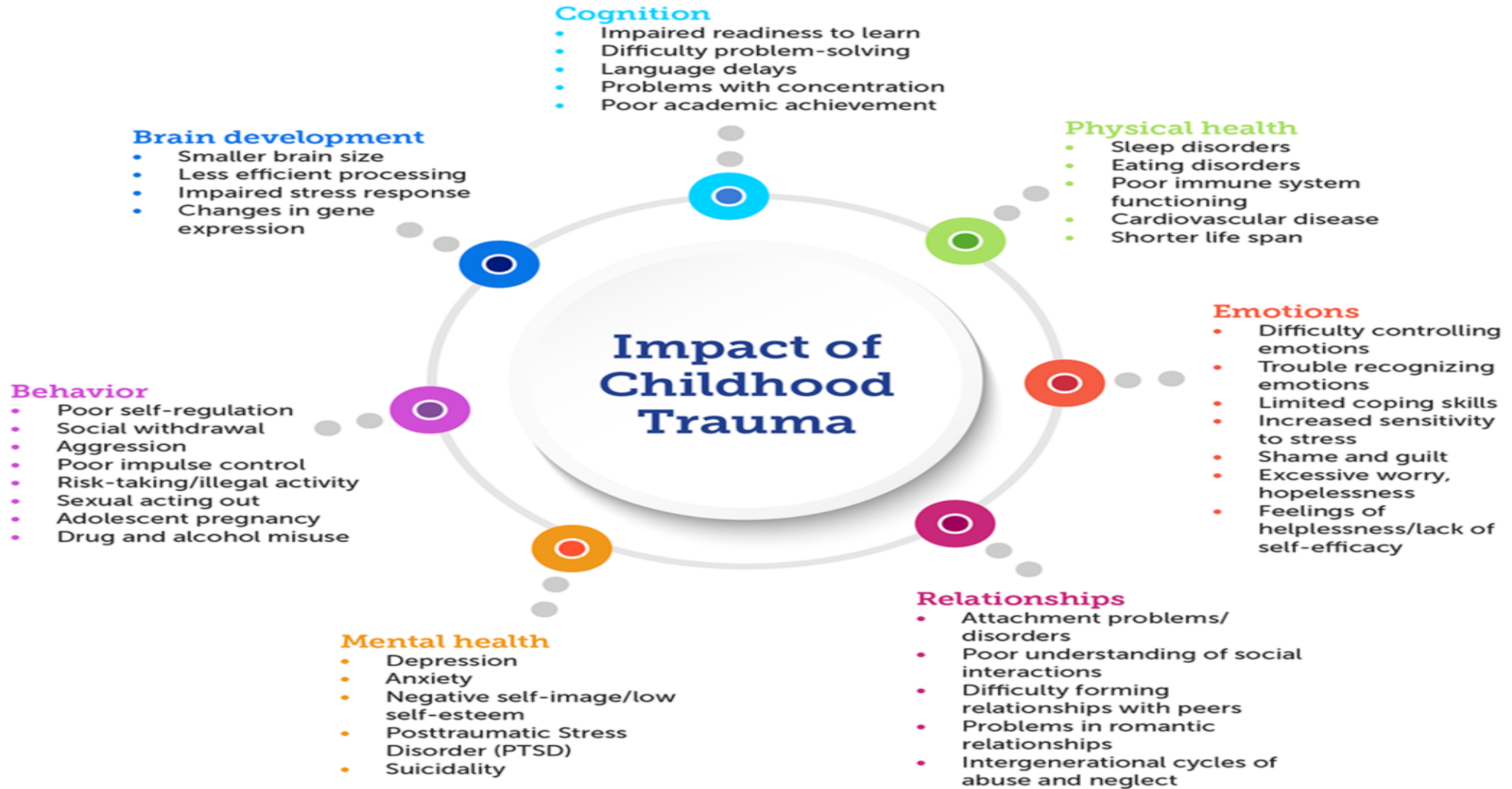
- Abuse and neglect
- Family violence
- Community violence
- School violence
- Life-threatening accidents and injuries
- Frightening or painful medical procedures
- Serious and untreated parental mental illness
- Loss of or separation from a parent or other loved one
- Natural or manmade disasters
- War or terrorist attacks
- Forced displacement or refugee status
- Discrimination
- Extreme poverty

# IMPACT OF CHILDHOOD TRAUMA

Trauma can affect childhood development in the following ways:

- **COGNITION**
- **PHYSICAL HEALTH**
- **EMOTIONS**
- **RELATIONSHIP**
- **MENTAL HEALTH**
- **BEHAVIOUR**
- **BRAIN DEVELOPMENT**

# Impact of Childhood Trauma



# FAMILY INFORMED TRAUMA CARE SERVICES

A family informed trauma care service is one in which all parties involved recognize and respond to the impact of traumatic stress on those who have contact with the system including children, caregivers, and service providers. Programs and agencies within such a system infuse and sustain trauma awareness, knowledge, and skills into their organizational cultures, practices, and policies. They act in collaboration with all those who are involved with the child, using the best available science, to facilitate and support the recovery and resiliency of the child and family.



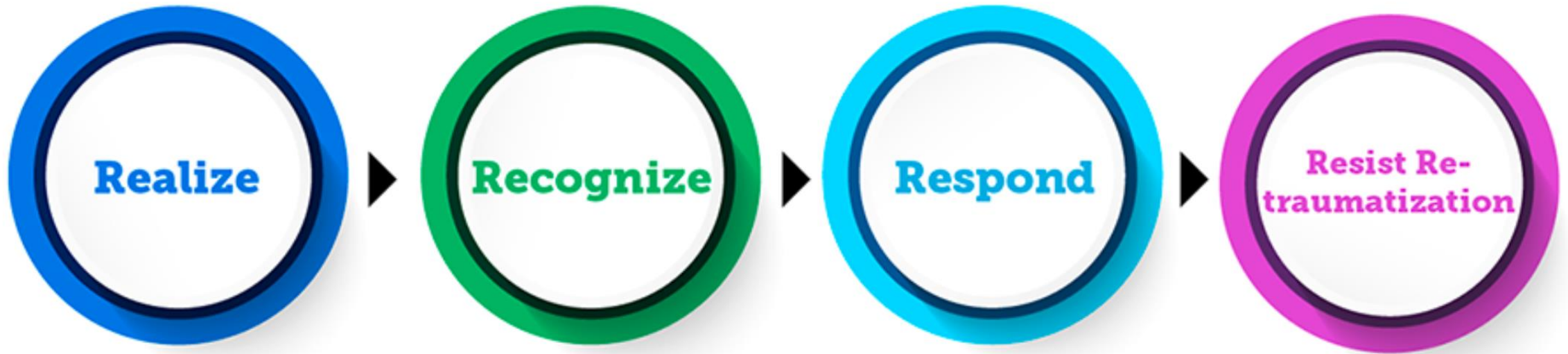
# FAMILY INFORMED TRAUMA CARE SERVICES

## CONTD...

A service system with a family informed trauma perspective is one in which programs, agencies, and service providers:

- routinely screen for trauma exposure and related symptoms; use culturally appropriate evidence-based assessment and treatment for traumatic stress and associated mental health symptoms;
- make resources available to children, families, and providers on trauma exposure, its impact, and treatment;
- engage in efforts to strengthen the resilience and protective factors of children and families impacted by and vulnerable to trauma; address parent and caregiver trauma and its impact on the family system;
- emphasize continuity of care and collaboration across child-service systems; and
- maintain an environment of care for staff that addresses, minimizes, and treats secondary traumatic stress, and that increases staff resilience.

# The Four Rs of Trauma-Informed Care



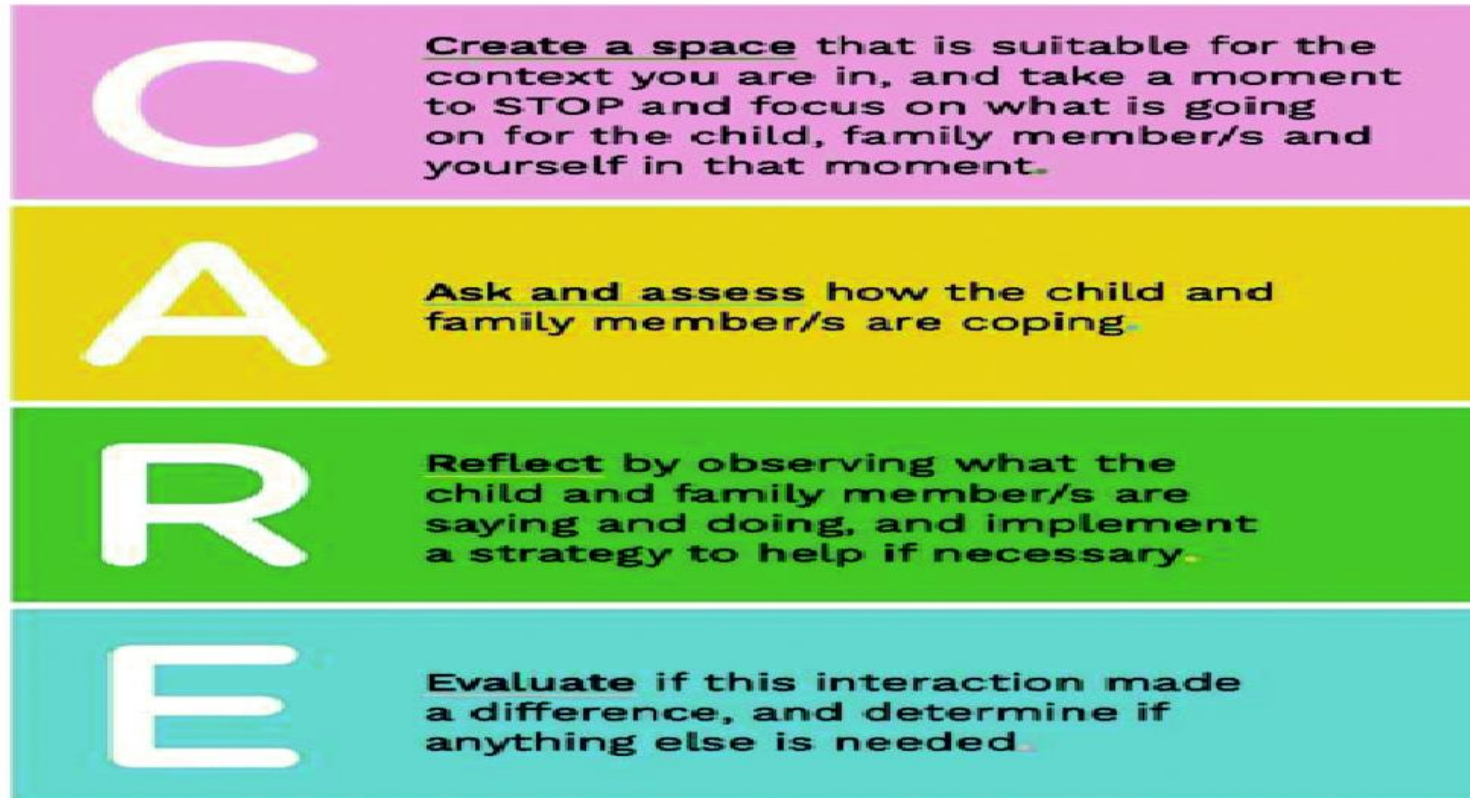
**Realize** the widespread impact of trauma and understand potential paths for recovery

**Recognize** the signs and symptoms of trauma in clients, families, staff, and others involved with the system

**Respond** by fully integrating knowledge about trauma into policies, procedures, and practices

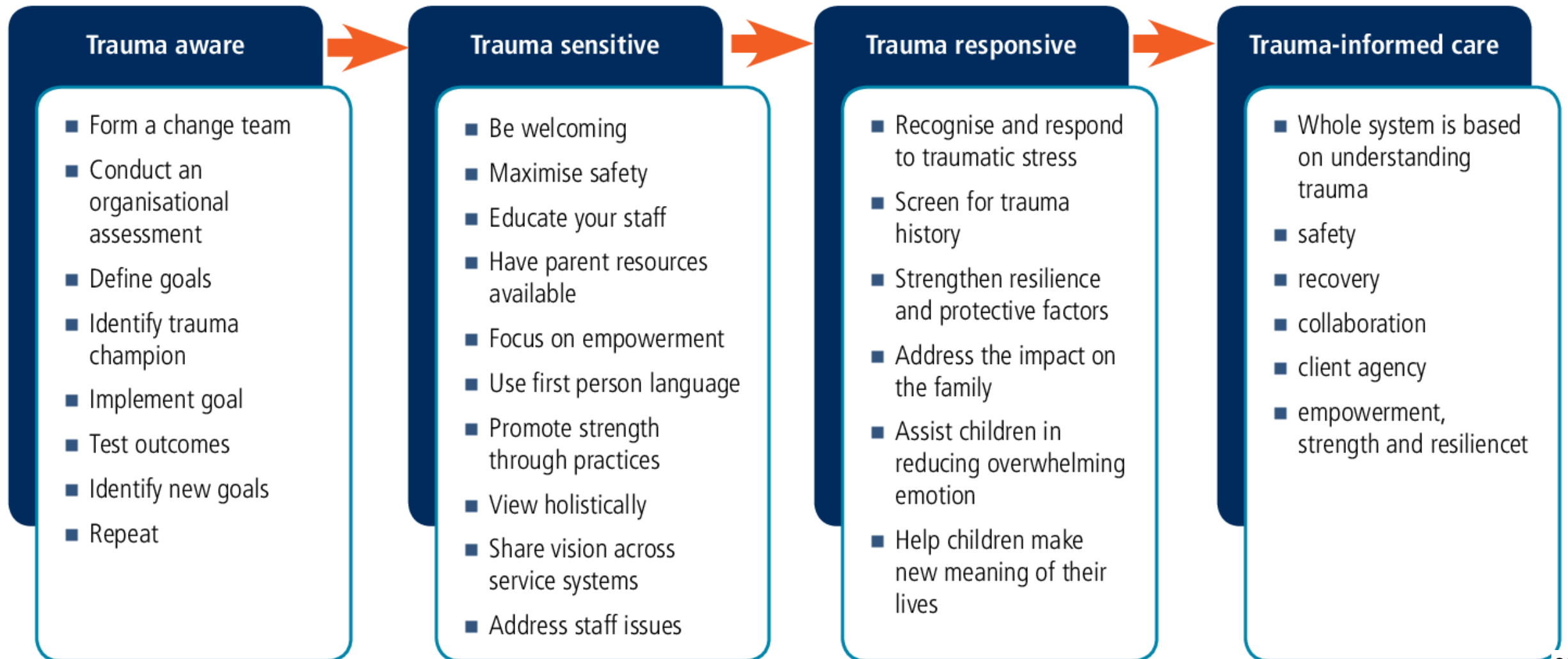
**Resist** re-traumatization of children, as well as the adults who care for them

# Implementing FAMILY INFORMED TRAUMA CARE SERVICES



From: Simons M, Tyack Z, Montague G, Kenardy J, Ziviani J, De Young A. (2019). *Responsive Care Intervention – Online: a web based trauma-informed care training for health professionals*. Brisbane, Australia; University of Queensland & Children’s Health Queensland.

# STEPS TO INTEGRATE FAMILY INFORMED TRAUMA SERVICES TO MENTAL HEALTH CARE SERVICES TO ADDRESS CHILDHOOD TRAUMA



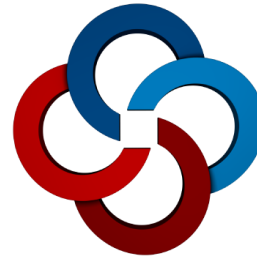


## CONCLUSION

Integrating Family Informed Trauma Service (FITS) to address childhood trauma, will be one of the most exciting things to happen in that, it will provide psychosocial treatment (behavioral health) services for children and adults as well. This will shift the perspective and treatment model from one which asks “What is the matter with you?” to “What happened to you...and how does that impact your life and functioning today?” This strategy will facilitate the coping and healing process in childhood trauma.

# Thank You

TRACY RAWLS  
C.E.O, eXclusive Services Inc.



HAMILTON COUNTY

**Mental Health &  
Recovery Services Board**

**Childhood Trauma Awareness  
Price Hill Recreation Center  
June 23, 2022**

# Statutory Authority Under ORC §340

Serve as the  
MH and AOD  
planning  
authority for  
the county

## Lead Public Behavioral Healthcare in Hamilton County

- Plan
- Fund
- Manage
- Evaluate

## Coordinate System of Community Care

- Cost Effective
- Better Outcomes
- Meets Needs and Preferences



# Hamilton County Crisis Continuum

- **Suicide Prevention Hotline- 24/7 281-CARE**
  - **Crisis Text Line-** Adult- text to 839863  
**Youth-** text 4HOPE to 839863
- **Mobile Crisis Team- 24/7 513-584-5098**
- **Crisis Intervention Team (CIT)- 40 hour training for First Responders**
- **Crisis Stabilization Unit-** both Adult and Children
- **Mental Health Access Point (MHAP)- 24/7 513- 558-8888**
- **Cincinnati Children's Hospital Psychiatric Intake Response Center (PIRC) - 24/7 513-636-4124**
- **Best Point Pediatric Urgent Care- 3-10PM 513-527-3040**
- **Behavioral Health Agencies-** provide outpatient services that are trauma informed care and offer evidenced based programming



**UC Health**<sup>TM</sup>  
IN SCIENCE LIVES HOPE.

Mobile Crisis Hamilton County

**UC Health**

6.23.22

# Mobile Crisis Goals

- Provide treatment for adults and children with chronic mental illness or experiencing a psychiatric emergency.
- Increasing Connection to Services: Proactive Approach
- Reduce Pressure on the Healthcare System: Reduce unnecessary ED visits.
- Promote Cost Effectiveness: Savings to Police Dept. & EMS
- Reduce the criminalization of persons with mental illness.





# Services Include

- Telephone Screening
- Information and Referral
- Crisis Intervention
- Follow-up calls/visits (when needed)
- Referral to outpatient counseling and case management services
- Assistance with voluntary and involuntary hospitalizations
- Consultation to community Providers
- Work closely with city and county law enforcement
- Work closely with city and county EMS

# Warning Signs in Children

- Persistent sadness — two or more weeks
- Withdrawing from or avoiding social interactions
- Hurting oneself or talking about hurting oneself (cutters)
- Talking about death or suicide
- Outbursts or extreme irritability
- Out-of-control behavior that can be harmful
- Drastic changes in mood, behavior or personality
- Changes in eating habits (EDO)  
High rate of suicide in EDO patients
- Loss of weight
- Difficulty sleeping
- Frequent headaches or stomachaches
- Difficulty concentrating
- Changes in academic performance
- Avoiding or missing school
- Suicide is one of the top common causes of death in adolescents.



# Children Mobile Crisis Interventions

- De-escalation assistance
- Assessment of the crisis
- Review if and what services/treatment the child is connected to
- Resource recommendations to address needs based on assessment
  - Service and treatment recommendations
  - Connection or re-connection to support and services
- Collaborate with caregivers, service providers, counselors, case managers.
- Review level of care and consider higher level of care
  - In some situations, Children's Hospital further assessment is needed


# Case Examples



When MCT comes what does that look like



Family focus and School example



# How and When to Call Mobile Crisis

## **When:**

A psychiatric crisis has reached a point when the family or community needs a professional to intervene and assist.

## **Examples:**

- Behaviors of the child have escalated to a point when they or others around them are put into harms way- or at high risk to hurt themselves or others.
- When current supports have been engaged and there is still a need to deescalate and assist the child in the moment of crisis.

## **How:**

Anyone in Hamilton county can contact Mobile Crisis. Community members, professionals and police.

# **513-584-5098**



# For Help in Crisis: 988 and 911

Presentation for the:

**Healthy Neighborhoods Committee**

Special Sessions on Childhood Trauma

June 23, 2022

# Who we are...

City of Cincinnati

Emergency Communications Center



Talbert House

281-CARE



# Talbert House: 281-CARE / Crisis Hotline

- *Call: 513-281-CARE(2273)*
- *Text: TALBERT to 839863*
- 281-CARE is a 24-hour telephone crisis intervention service for suicide prevention, psychological crises, marital and relationship conflicts, bereavement, loss and other personal emergencies. The hotline offers information and referrals for services throughout the agency as well as training on suicide prevention.



# Cincinnati Emergency Communications Center

- Emergency:
  - ***Call or Text 911***
- Non-Emergency:
  - ***Call 311 or 513-765-1212***
- Mission:
  - The Cincinnati Emergency Communications Center's protects life and property in the Queen City by quickly and accurately sending help to those who need it and by supporting our first responders.



# 911 and 988 Collaboration

- ECC and Talbert House working together to enhance 911 and 988 collaboration and partnership.
  - 988 getting assistance from 911 when needed
    - Sending first responders when an Active Rescue is required to save a life
  - 911 getting assistance from 988 when needed
    - Adding 988 crisis line counselor's support with 911 caller deescalation
    - Potentially divert some 911 callers to a more appropriate type of help

# ARC Pilot Program

- 988 – 911 Enhanced Partnership
- ARC Response Team Pilot
  - Cincinnati 911 + Cincinnati Health Department + Cincinnati Fire Dept
  - Response to low-risk crises in lieu of traditional police response
  - Six months beginning this summer
  - One team, 40 hours per week
    - Mental Health Clinician (CHD)
    - Paramedic (CFD)



# Questions?

## City of Cincinnati

### Emergency Communications Center

- Bill Vedra
- Director, ECC
- [Bill.vedra@cincinnati-oh.gov](mailto:Bill.vedra@cincinnati-oh.gov)

## Talbert House

### 281-CARE

- Alexander J. Rulon
- Director, Community Care
- [alexander.rulon@talberthouse.org](mailto:alexander.rulon@talberthouse.org)

Date: June 15, 2022

To: Mayor and Members of City Council 202201351  
From: John P. Curp, Interim City Manager  
Subject: EMERGENCY ORDINANCE – ARTWORK ON TRAFFIC CONTROL BOXES

---

Attached is an emergency ordinance captioned as follows:

**AUTHORIZING** the City Manager to design, install, and maintain artwork on various traffic control boxes located in the Over-the-Rhine neighborhood and the Central Business District, notwithstanding any conflicting Department of Transportation and Engineering rules and regulations or any provision of the Cincinnati Municipal Code that would prohibit the installation and maintenance of the artwork.

Keep Cincinnati Beautiful (KCB) received funding from the Cincinnati Center City Development (3CDC) and the Ohio Arts Council to implement a public artwork project called “Outside The Box” (OTB). The OTB program has been implemented in cities across the country. The OTB project involves applying a patterned vinyl artwork wrap to existing City traffic control boxes in the public right of way. This can discourage graffiti, beautify the public sphere, and foster public pride. The selected boxes are located in the Central Business District and Over-the-Rhine.

The Department of Transportation and Engineering has guidelines for the artwork related to visual criteria and physical placement on this City infrastructure and is working closely with KCB.

The emergency ordinance is necessary to meet the needs of KCB to begin installation the summer of 2022.

The Administration recommends passage of the attached emergency ordinance.

cc: John S. Brazina, Director, Transportation and Engineering





EMERGENCY

City of Cincinnati

JRS  
AWG/EESW

An Ordinance No. \_\_\_\_\_

- 2022

**AUTHORIZING** the City Manager to design, install, and maintain artwork on various traffic control boxes located in the Over-the-Rhine neighborhood and the Central Business District, notwithstanding any conflicting Department of Transportation and Engineering rules and regulations or any provision of the Cincinnati Municipal Code that would prohibit the installation and maintenance of the artwork.

WHEREAS, the City of Cincinnati wishes to install artwork and paintings (“Artwork”), substantially similar in design, color, and concept to the sample designs in Exhibit A to this ordinance, on various traffic control boxes located in the Central Business District and in the Over-the-Rhine neighborhood to enliven the spaces and promote public awareness of the arts; and

WHEREAS, the City may designate one or more agents or contractors, including Keep Cincinnati Beautiful, Inc., (“KCB”), to carry out all or a portion of the work required to design, install, and maintain the Artwork; and

WHEREAS, the City may also accept donations from one or more persons, including KCB, in order to offset the cost and expense associated with the design, installation, and maintenance of the Artwork and to ensure the design, installation, and maintenance of the Artwork shall have little or no impact on the General Fund of the City of Cincinnati; and

WHEREAS, the design, installation, and maintenance of the Artwork shall be performed under the management of the City Manager or his designee, and any agents or contractors of the City, including KCB, shall comply with rules and regulations established by the City Manager and the City’s Department of Transportation and Engineering (“DOT”) regarding the design, installation, and maintenance of the Artwork, including rules and regulations concerning its location, size, materials, means of installation, and maintenance as necessary to ensure public safety; and

WHEREAS, the City’s design, installation, and maintenance of the Artwork is the City’s own expression, constitutes government speech, and does not signify the City’s intent to create a free speech forum; and

WHEREAS, the City will own the Artwork created under this project, will maintain complete control over the surrounding public rights-of-way as necessary for public safety, and will require the artists who design, install, and maintain the Artwork to waive their rights in and to the Artwork, including waiving all applicable rights under the federal Visual Artists Rights Act of 1990, 17 U.S.C. §§ 106A and 113(d), so as to ensure that expression made through the Artwork constitutes government speech; and

WHEREAS, the extent of maintenance and repair of the Artwork shall remain within the City's discretion, and the Artwork shall remain subject to removal by the City, in part or in whole, at any time; and

WHEREAS, prior to installation, DOTE will review the final design and placement of the Artwork to ensure it will not detract from, interfere with, or obscure official traffic control devices, will be safe, and will not unreasonably interfere with pedestrians; and

WHEREAS, the City has an interest in promoting the arts, including within the public right-of-way, notwithstanding the provisions of the Cincinnati Municipal Code that would normally prohibit such displays, when the proposed display will not negatively impact the health, safety, or welfare of residents and users of the right-of-way; and

WHEREAS, the City Planning Commission, at its regularly scheduled meeting on May 6, 2022, recommended that the City install the Artwork on various traffic control boxes located in the Central Business District and in the Over-the-Rhine neighborhood; and

WHEREAS, the City Council finds that the design, installation, and maintenance of the Artwork in the Central Business District and in the Over-the-Rhine neighborhood will beautify the public right-of-way, enhance civic pride, and advance public health and wellness goals; and

WHEREAS, the design, installation, and maintenance of this Artwork is consistent with the "Live" goal to "[c]reate a more livable community" as described on page 156 of Plan Cincinnati (2012); now, therefore,

BE IT ORDAINED by the Council of the City of Cincinnati, State of Ohio:

Section 1. That the City Council hereby declares the design, installation, and maintenance of artwork that is substantially similar in design, color, and concept to the sample designs on the attached Exhibit A ("Artwork"), incorporated herein by reference, on various traffic control boxes located in the Central Business District and in the Over-the-Rhine neighborhood to be a matter of significant public interest, and it hereby resolves to raise public awareness of the arts through the design, installation, and maintenance of this conspicuous visual art; further that, notwithstanding the provisions of the Cincinnati Municipal Code that would normally restrict such displays within the public right-of-way, Council has determined that the design, installation, and maintenance of the Artwork is in the interest of the public health, safety, morals, and general

welfare and will not negatively impact the health, safety, morals, or welfare of residents and users of the public right-of-way.

Section 2. That the City's design, installation, and maintenance of the Artwork is the City's own expression, constitutes government speech, and does not signify the City's intent to create a free speech forum.

Section 3. That the City Manager is hereby authorized to design, install, and maintain the Artwork on the various traffic control boxes located in the Central Business District and in the Over-the-Rhine neighborhood, which Artwork shall be similar in design concept with the sample designs depicted on the attached Exhibit A, incorporated herein by reference, and shall be located on the various traffic control boxes located in the Central Business District and in the Over-the-Rhine neighborhood as approved by the City Manager, notwithstanding any conflicting Department of Transportation and Engineering ("DOT") rules and regulations and any applicable provisions of the Cincinnati Municipal Code.

Section 4. That the design, installation, and maintenance of the Artwork shall be performed under the management of the City Manager or his designee, and any agents or contractors of the City, including Keep Cincinnati Beautiful, Inc., shall comply with rules and regulations established by the City Manager and the City's Department of Transportation and Engineering ("DOT") regarding the design, installation, and maintenance of the Artwork, including rules and regulations concerning its colors, symbols, styles, location, size, materials, and means of installation and maintenance as necessary to ensure public safety.

Section 5. That the City Manager is authorized to engage one or more agents or contractors to assist with the City's design, installation, and maintenance of the Artwork on such terms and conditions that the City Manager determines are in the best interests of the City, and

any work performed by the agents and contractors so engaged by the City Manager shall be performed under the management of the City Manager or his designee, who shall have the sole authority to approve the design, location, size, materials, and means of installation and maintenance of the Artwork and to establish rules and regulations for the same as necessary to ensure public safety.

Section 6. That the extent of maintenance and repair of the Artwork shall remain within the City's discretion, and the Artwork shall remain subject to removal by the City, in whole or in part, at any time.

Section 7. That the City will own the Artwork created under this project, will maintain complete control over the right of way as necessary for public safety, and will require the artists who design, install, and maintain the Artwork to waive their rights in and to the Artwork, including waiving all applicable rights to the Artwork under the federal Visual Artists Rights Act of 1990, 17 U.S.C. §§ 106A and 113(d), so as to ensure that expression made through the Artwork constitutes government speech.

Section 8. That the City Manager is authorized to accept donations, including materials, labor, money, and in-kind services, on such terms and conditions that the City Manager determines are in the best interests of the City, to offset the cost and expense associated with the design, installation, and maintenance of the Artwork, so that the design, installation, and maintenance of the Artwork shall have minimal impact on the General Fund of the City of Cincinnati.

Section 9. That the proper City officials are hereby authorized to do all things necessary and proper to comply with the terms of Sections 1 through Section 8 hereof.

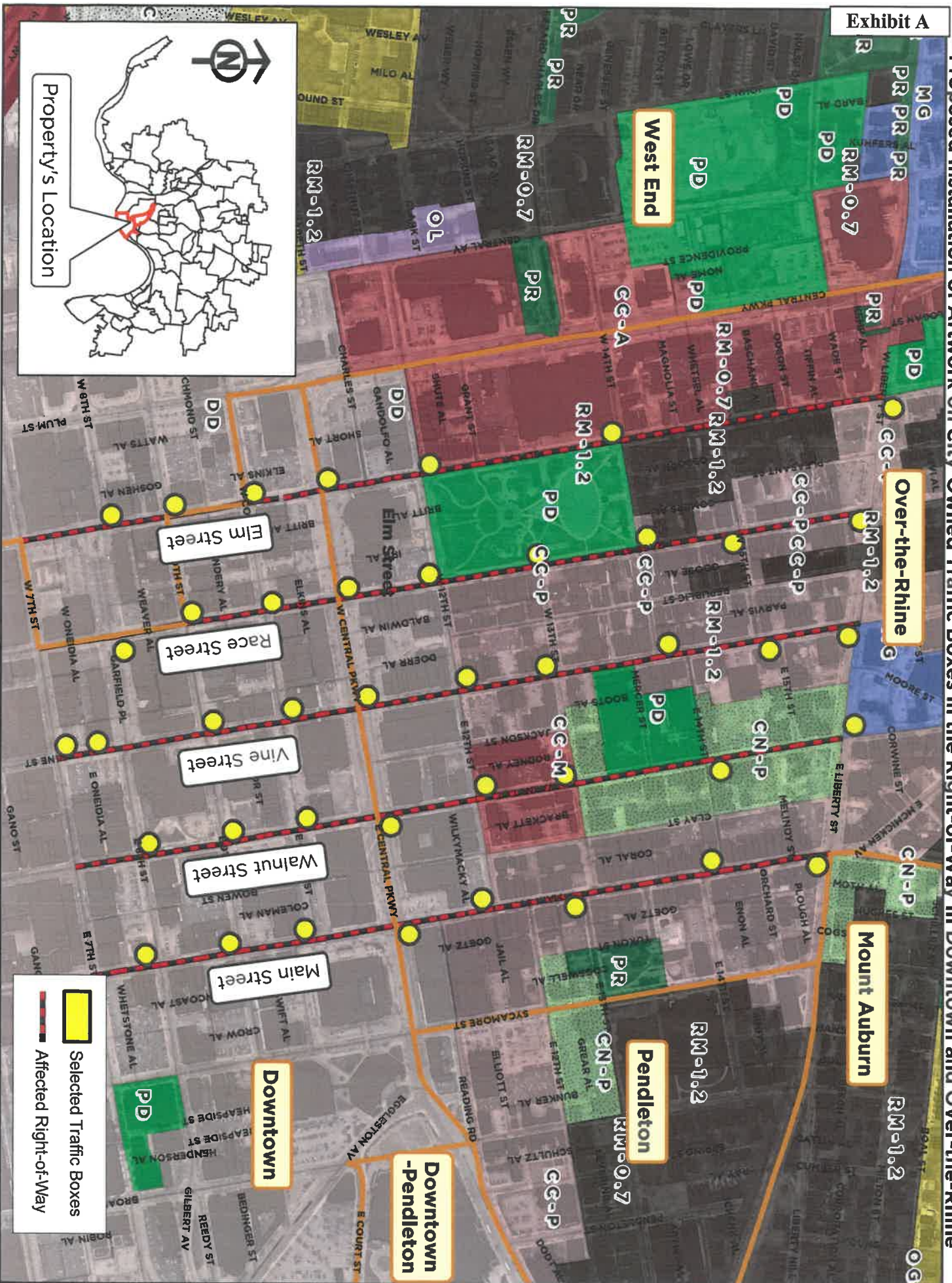
Section 10. That this ordinance shall be an emergency measure necessary for the preservation of the public peace, health, safety, and general welfare and shall, subject to the terms of Article II, Section 6 of the Charter, be effective immediately. The reason for the emergency is the immediate need to allow the public art project described in this ordinance to proceed to allow the corresponding benefits to the City, the Central Business District, and the Over-the-Rhine neighborhood to be realized at the earliest possible time.

Passed: \_\_\_\_\_, 2022

\_\_\_\_\_  
Aftab Pureval, Mayor

Attest: \_\_\_\_\_  
Clerk

Proposed Installation of Artwork on City-Owned Traffic Boxes in the Right-of-Way in Downtown and Over-the-Rhine



Property's Location

Elm Street

Race Street

Vine Street

Walnut Street

Main Street

Downtown

Downtown  
-  
Pendleton

Pendleton

Mount Auburn

Over-the-Rhine

West End

- Selected Traffic Boxes
- Affected Right-of-Way

# FLORA & FAUNA

PATTERN



# FLORA & FAUNA

## POSSIBLE COLORWAYS





# FLORA & FAUNA

## TRAFFIC BOX VISUALIZATION



# WATER TOILE

## PATTERN



# WATER TOILE

## POSSIBLE COLORWAYS

