



Western Riverfront Community Profile

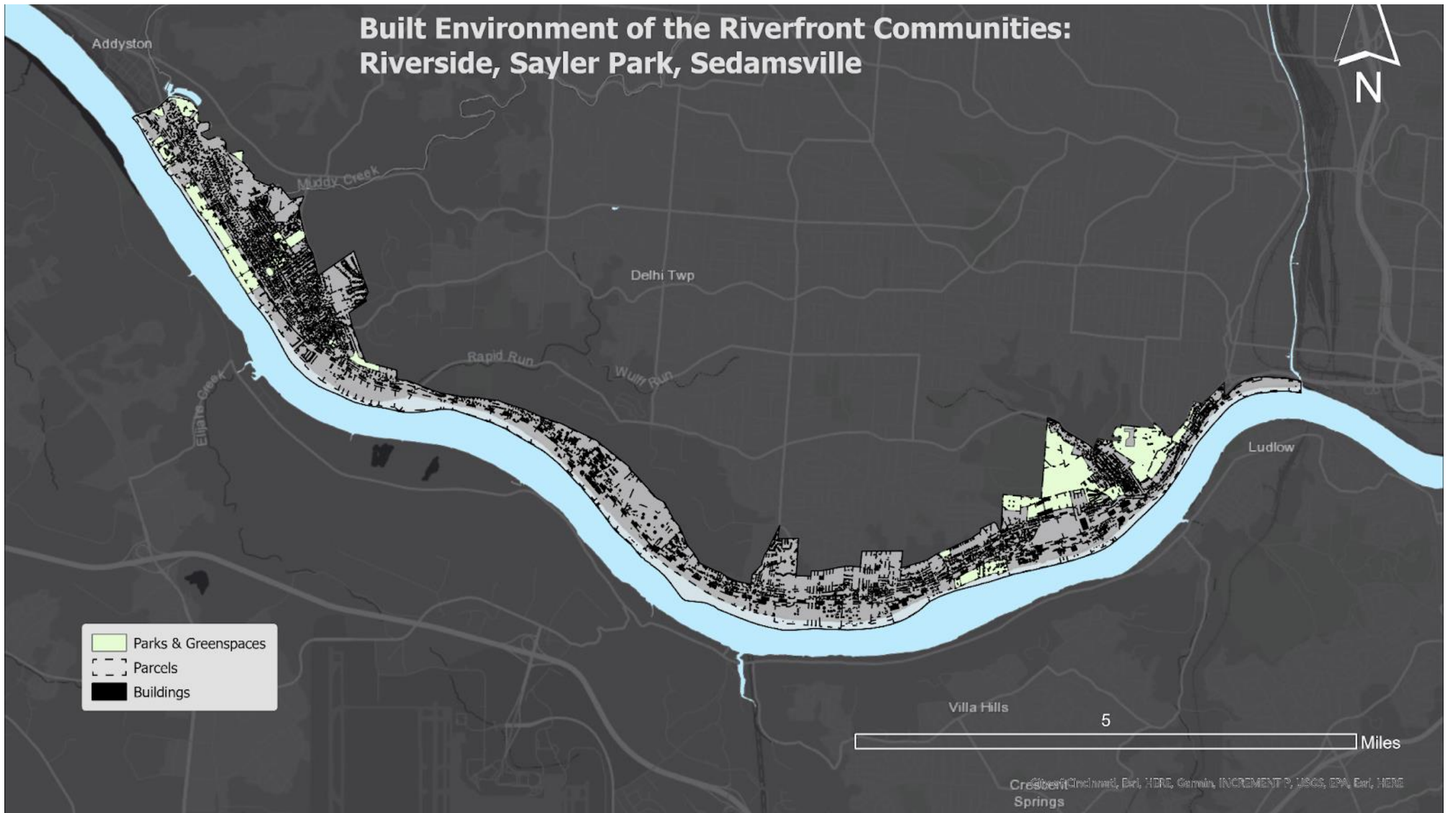
Urban Appalachian Community Coalition

Community Study of Sedamsville, Riverside and Sayler Park

Michael Maloney and Kayla Brandt

2022

Built Environment of the Riverfront Communities: Riverside, Sayler Park, Sedamsville





Sedamsville





Riverside





Sayler Park



Scenes of the Sayler Park business district (Clockwise from upper left: Ace Hardware, future Angelo's Pizza place, Sayler Park Coffee Shop, Bizy Bee Bakery, annex to hardware store).



Socioeconomic Statistics





Unique Problems

The Pattern of Neighborhood Decline

- Disruption/disasters
 - Flooding
 - Widening River Road
- Disinvestment
 - Loss of businesses
 - Closing of schools, agencies and churches
- Change in home ownership
 - Outside investors – absentee landlords
 - Flight of homeowners
 - Rundown properties
 - Crime and Nuisance
- Critical loss of capacity
 - Less civic participation
 - People not out on streets
 - Displacement, Loss of affordable housing units



Unique Opportunities

- Formation of a Business Association
- A plan to enhance public use of the Riverfront
 - Upgrade Gilday Riverside Park
 - Update Gilday Boat Ramp
 - Development district at Anderson Ferry
 - Role of the Port Authority in housing
- Formation of a Community Development Corporation to preserve existing property and develop new housing.
- Enhance civic engagement
- Improve social services



Goals

- Expand the human and physical capital of these communities
- Remediate negative factors including:
 - Water runoff
 - Traffic issues
 - Lack of walkability
 - Decline of neighborhood business districts
 - Housing deterioration and vacant housing
 - Homelessness

See the work of the Housing Solutions Summit



Goals (Continued)

- Address the lack of investment by forming a consortium including:
 - social service providers,
 - city departments,
 - foundations,
 - neighborhood civic associations and
 - businessesthat would devote time and money to promote community development



Goals (Continued)

- The City should recognize that the Western Riverfront is the **next frontier** in Cincinnati's community development – an opportunity to advance our ability to address the complex set of environmental, social, and economic conditions in our neighborhoods.



Additional Information We Have

- Walkability Study
- Stormwater Drainage Study

Michael Maloney

Kayla Brandt

Urban Appalachian Community Coalition

www.uacvoice.org