



# Resilience Hubs

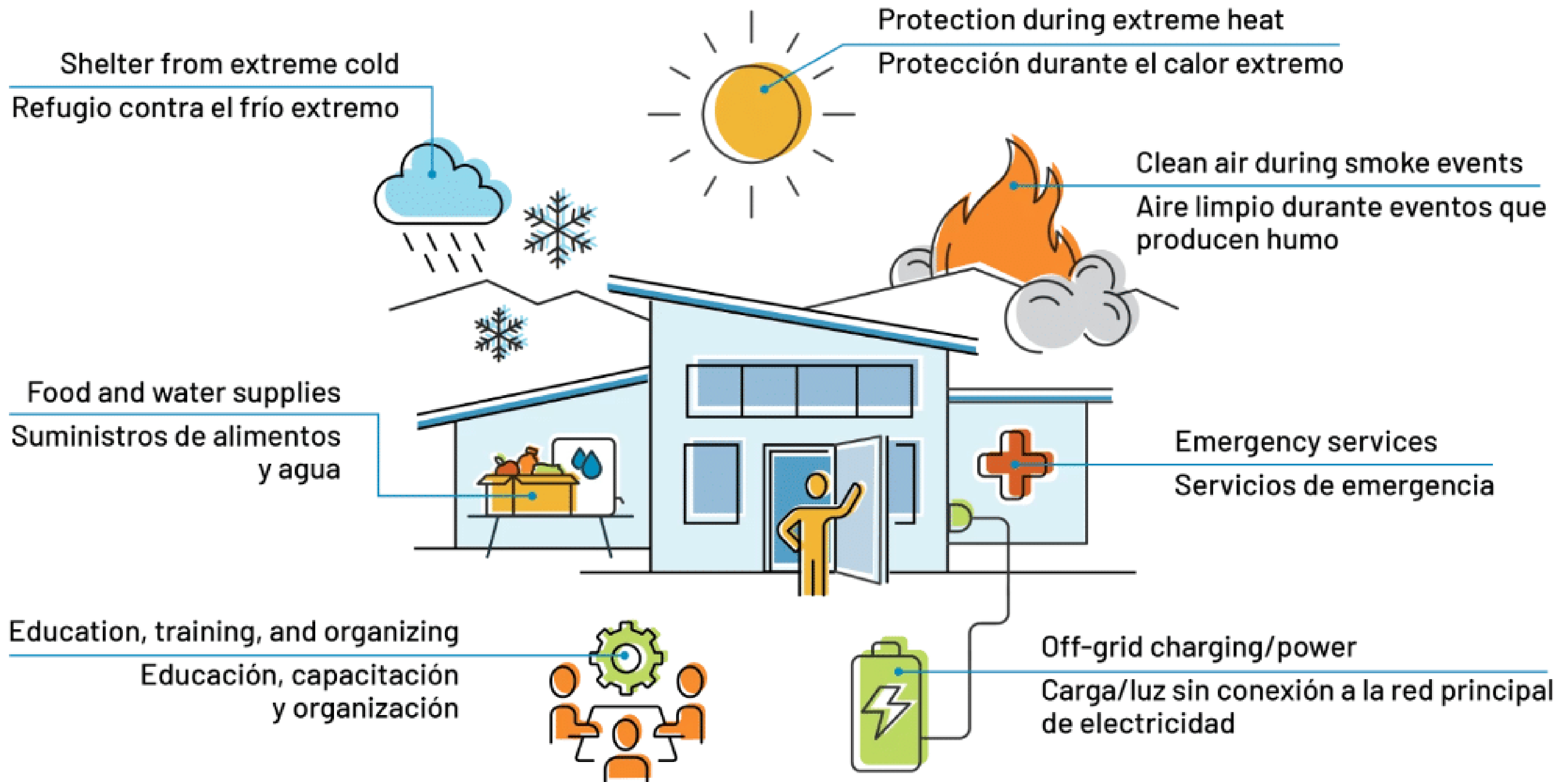
Update for Climate, Environment &  
Infrastructure Committee  
January 28, 2025



Resilience hubs are **community-focused facilities that enhance residents' resilience**, emergency preparedness, and health.

Resilience hubs offer emergency services, like shelter, power, communication, food, and water during disasters and provide resources and programming during everyday operations.

These hubs **ensure vulnerable populations have equitable access to resources** and can recover from disasters.



# Urban League Resilience Hub Project

The Office of Environment & Sustainability is working with the **Urban League** and **Groundwork ORV** to:

- conduct a community engagement process to **co-create a Resilience Hub in Avondale** and
- complete an **energy audit** with solar array/battery assessment at the Urban League's facility.

This project is **grant funded** through the **Urban Sustainability Directors Network (USDN)**.

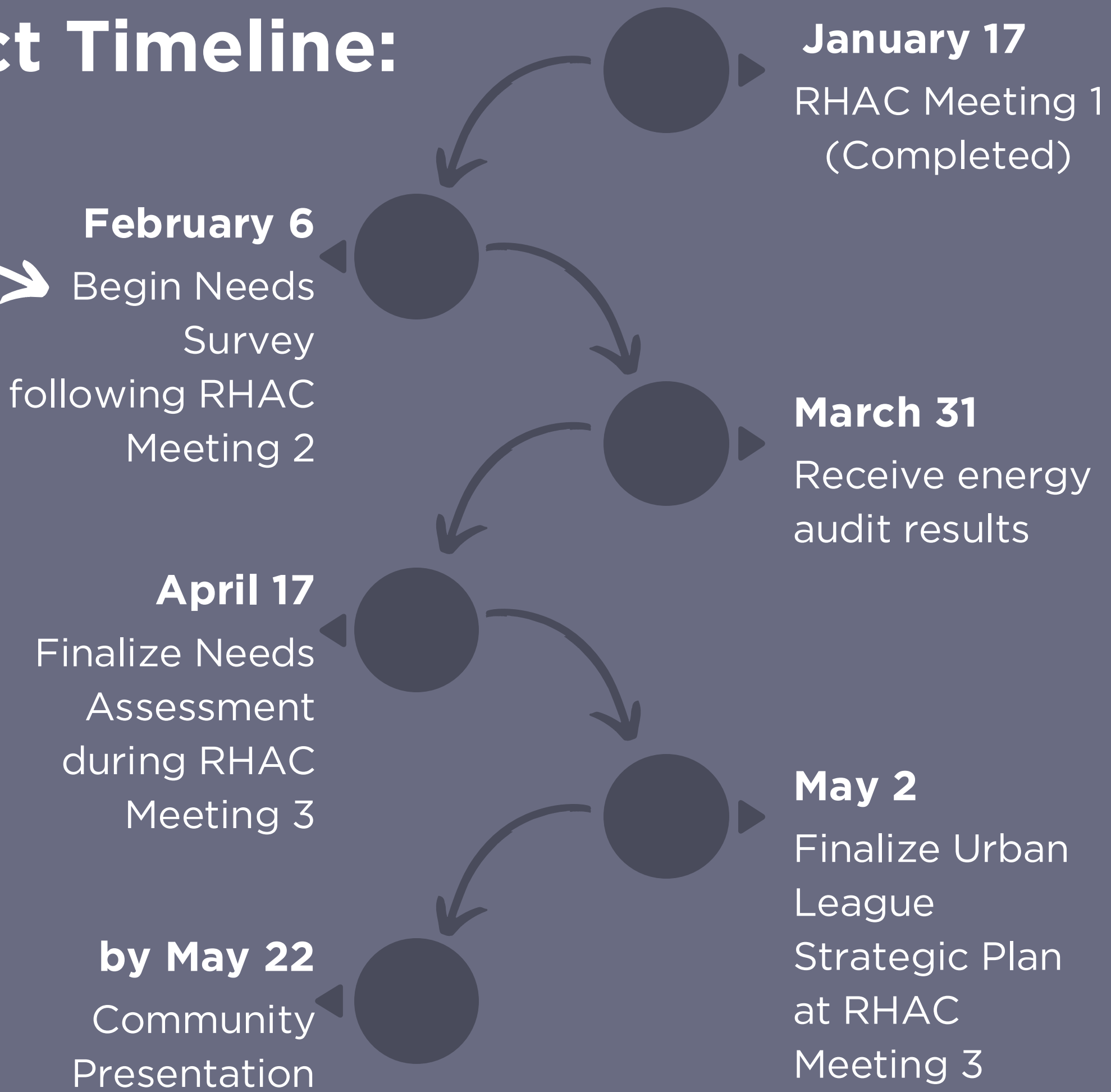


## Project Deliverables

- **Resilience Hub Advisory Committee (RHAC)**
  - Includes Avondale residents and members of the Avondale Community Council
- **Avondale Community-Wide Needs Assessment**
  - Based on a Needs Survey to be co-created by project team and RHAC
- **Energy audit** of the Urban League's facility with a solar and battery assessment
- **Urban League Resilience Hub Strategic Plan**
  - Outlines next steps for Resilience Hub establishment at the Urban League facility

# Project Timeline:

**Next Step**



## Moving Forward:

- **Based on initial RHAC input**, prioritize:
  - Trauma awareness
  - Tenant advocacy and education
  - Connecting people and resources
  - Building trust
- Conduct a **Needs Survey**
- **Share information** about Resilience Hubs





# Potential Future Resilience Hub Locations

- MOU with CRC to work toward resilience hub tenets
- CRC already home to much community resilience programming – warming & cooling stations
- Three CRC buildings currently have solar installations
  - College Hill
  - Evanston
  - Millvale
- City will RFP for battery backup at these locations in 2025





Cold  
Weather

12. 3CDC  
GeneroCity513  
- Cleanup Crew

11. Kroger -  
Food  
Donations

10. Foundhouse  
Pet Program -  
Dog Food

9. Greater  
Cincinnati  
Behavioral  
Health - Drop  
In Caseworkers

8. CPD - 2 Officers/  
3 Shifts Daily

7. LaSoupe -  
Dinner Meals

6. Our Daily  
Bread - Lunch  
Meals

5. City -  
Breakfast Meals

4. Metro Bus  
Service - to and  
from overnight  
shelters

3. City  
Administration  
and CRC  
Leadership  
Coordination

2. Expanded  
Hours

1. CFD EOC  
Advanced  
Notice

# OTR Warming Hub Daily Activation:



# Climate Safe Neighborhoods

- 6-week workshops with citizens who are paid to offer their community expertise on climate change impacts in their neighborhood
- Elevate community needs and priorities
- Build relationships and trust and a better understanding of how to work together
- Empower community to take advantage of government and community programs
- Inspire and train climate advocates

