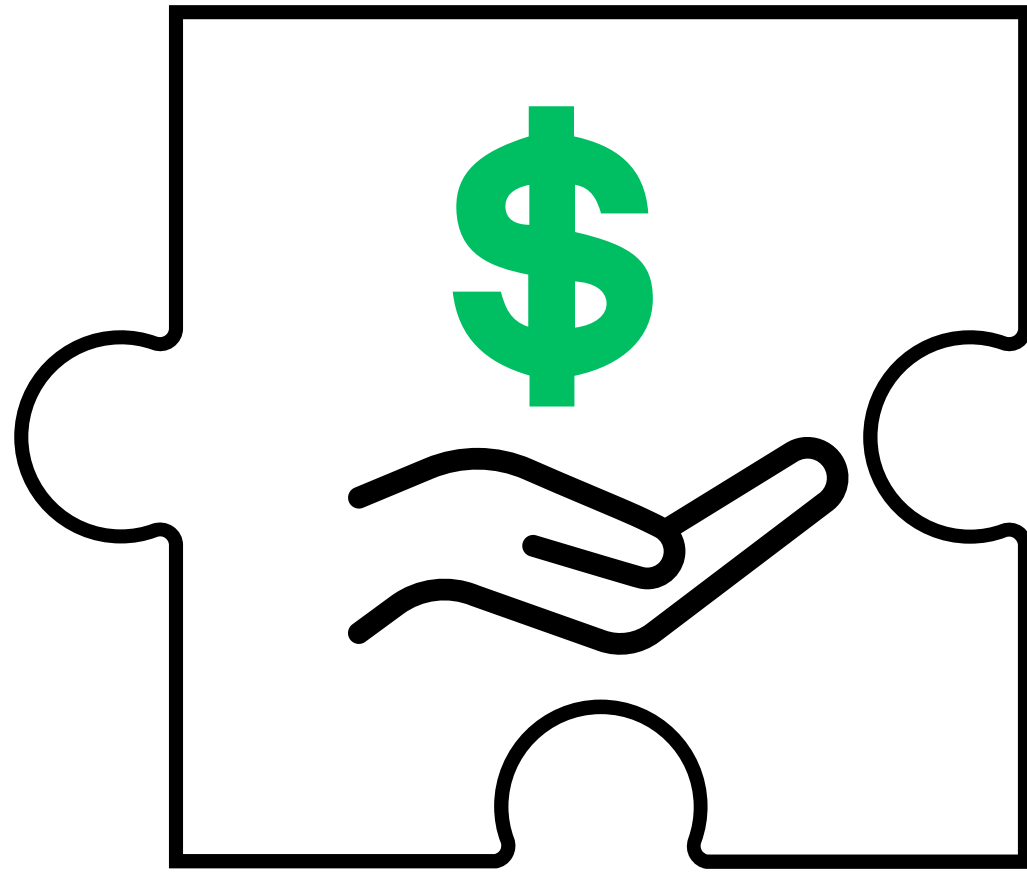




**CREATING A MORE EQUITABLE AND SUSTAINABLE  
COMMUNITY THROUGH**

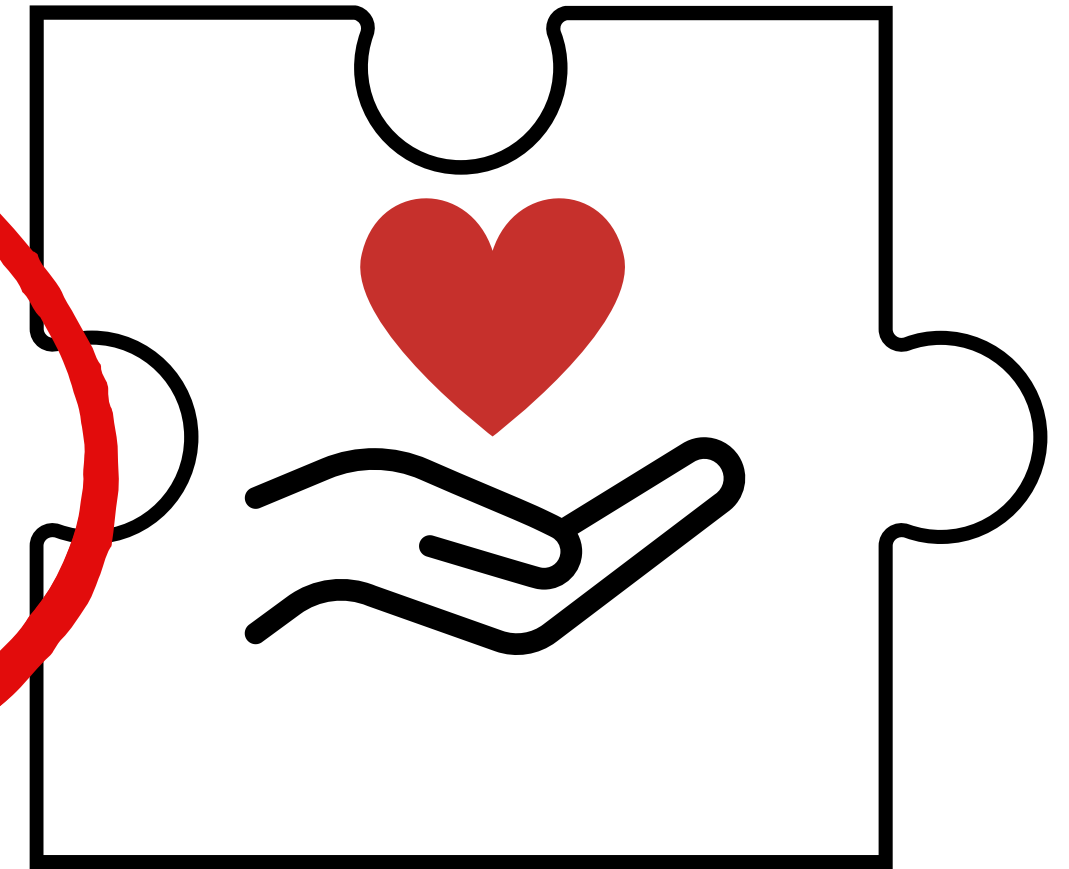
*Social  
Entrepreneurship*



**Traditional Business**



**Social Enterprise**



**Non Profit**



# WHO WE *serve*

100%

Early or Mid-stage  
Startups

80%

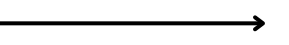
In business 3+ years  
later

52%

Women Founders

41%

BIPOC Founders





# FLYWHEEL *Programs*



**Board Leadership : 43% Women | 36% Black**

**Staff Composition: 50% women | 50% Black**





# HOUSING STABILIZATION HACKATHON

Presented by



**43** Applicants

**46%** Women

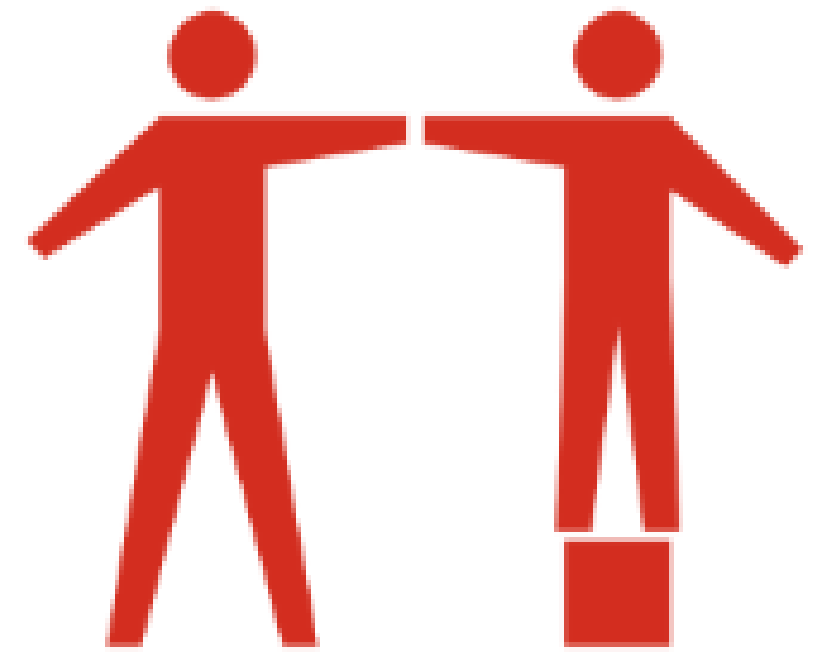
**24** Finalist

**78%** City residents

**58%** Bipoc







 **flywheel**  
SOCIAL ENTERPRISE HUB  
**DEMO DAY**





# BOOTS ON THE GROUND

**U-START**  
**15**  
**ENTERPRISES**

personalized Start up  
coaching





# BOOTS ON THE GROUND

## APPLICANT REFRERALS

personalized coaching  
session to applicants  
not accepted in the  
accelerator





# BOOTS ON THE GROUND

**U-GROW  
ALUMNI  
SUPPORT  
NETWORK**



# BOOTS ON THE GROUND

**U-GROW  
ALUMNI  
SUPPORT  
NETWORK**

- Networking Events
- Peer Learning
- Coaching
- Business plan tune up
- Connections to Funders







# SCANNING THE UNIVERSE

For social enterprises







Thank you  
Boots on the Ground