

# Equity Benchmarking Analysis

- Background and Purpose
- Approach
  - 20 U.S. cities, 3 national + 2 intern'l case studies
  - 350+ strategies categorized by equity type
- Report Organization
  - Types of Equity
  - Themes
  - Case Studies
  - Guiding Questions



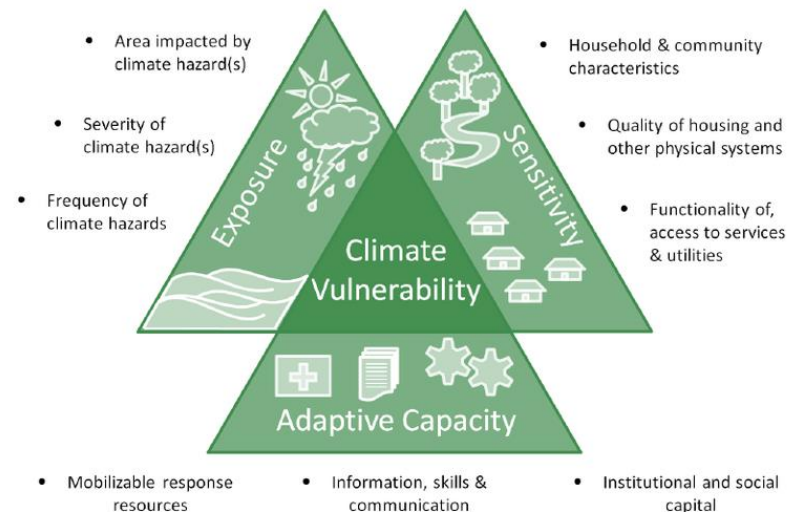
2022 Climate Equity Benchmarking Analysis Report

May 23, 2022

Tyeisha A. Cole  
Savannah Sullivan

# Equity Themes

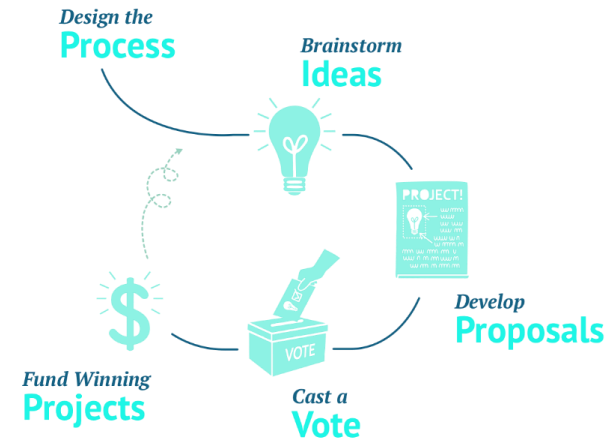
- Recognition Equity
  - Theme 1: Acknowledge Injustices to BIPOC Community Members
  - Theme 2: Acknowledgement of Land Stewardship
  - Theme 3: People Centered Vulnerability Assessment
  - Theme 4: Data Measures and Evaluation



[Image: Trundle et. al 2015](#)

# Equity Themes

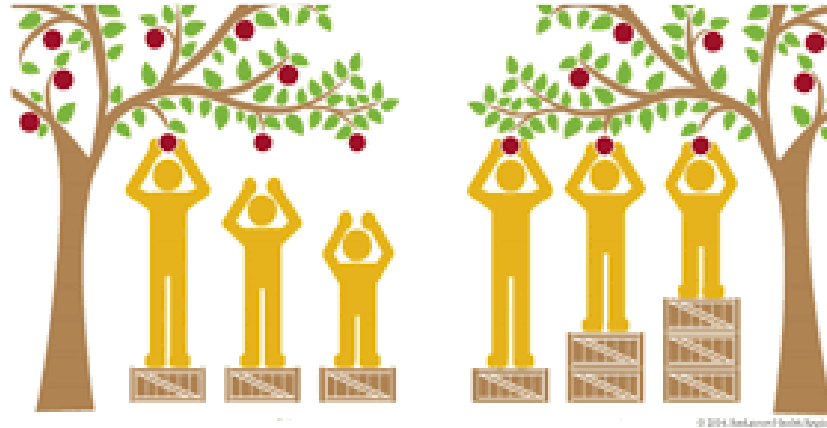
- Procedural Equity
  - Theme 1: Equity Centered Offices and Working Groups
  - Theme 2: Equity Centered Committees and Youth Councils
  - Theme 3: Participatory Budgeting
  - Theme 4: Compensation for Sharing Lived Experiences
  - Theme 5: Economic Inclusion in Procurement
  - Theme 6: Community Engagement and Partnership
  - Theme 7: Community Driven Resilience Planning



[Image: PBP, 2022](#)

# Equity Themes

- Distributional Equity
  - Theme 1: Targeted Universalism
  - Theme 2: Development of Climate Equity Funds



[Image: Powell et. al. 2019](#)

# Equity Themes

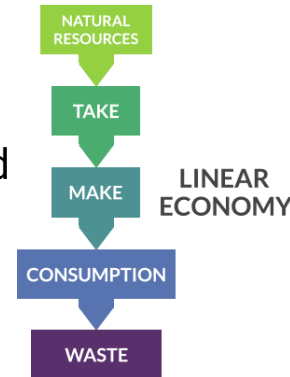
- Restorative Equity
  - Theme 1: Reclamation of Degraded Land
  - Theme 2: Community Wealth Building



[Image: Democracy Collaborative, 2020](#)

# Equity Themes

- **Transformative Equity**
  - Theme 1: Removal of Structural Barriers to Future Harm
  - Theme 2: Establishment of Enforcement and Compliance Mechanisms
  - Theme 3: Strategically Promote Transparency and Answerability
  - Theme 4: Promotion of Circular Economies and Regenerative Practices
  - Theme 5: Creation of Equitable Green Workforce Development Programs
  - Theme 6: Establishment of Anti-Displacement Strategies
  - Theme 7: Establishment of Regional Approaches



[Image: Harrow, 2020](#)

# Next Steps

- GCP Subcommittee Process
- GCP Equity Framework
- Community Engagement
- Regional Climate Collaborative
  - Launching 7/21



CLIMATE CHANGE SURVEY

2023 GCP RECOMMENDATION FORM

MEETING SCHEDULE

OES E-NEWSLETTER