

Where Justice & the Environment Meet



GROUNDWORK

Ohio River Valley

- 80% of our population live in cities
 - Increasingly diverse
- The modern environmental movement has left diversity behind (see the Green 2.0 report)
- Climate Change is disproportionately impacting low-income and/or minority communities
- Degraded urban environments and the lack of access to healthy natural places impacts youth/community feelings toward nature

Federal Interagency Partnership Supports Development of GWUSA Network



Groundwork Ohio River Valley: The Future of Conservation

Local Roots

Urban Environment

Reaching people left behind by the environmental movement



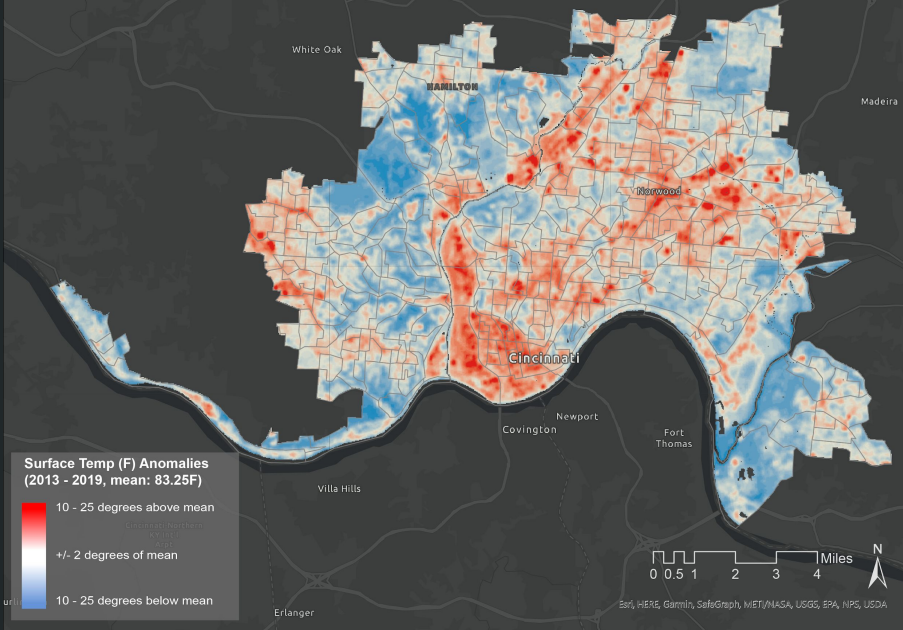
Tree Planting on the Westside



Climate Safe Neighborhoods: A National Partnership

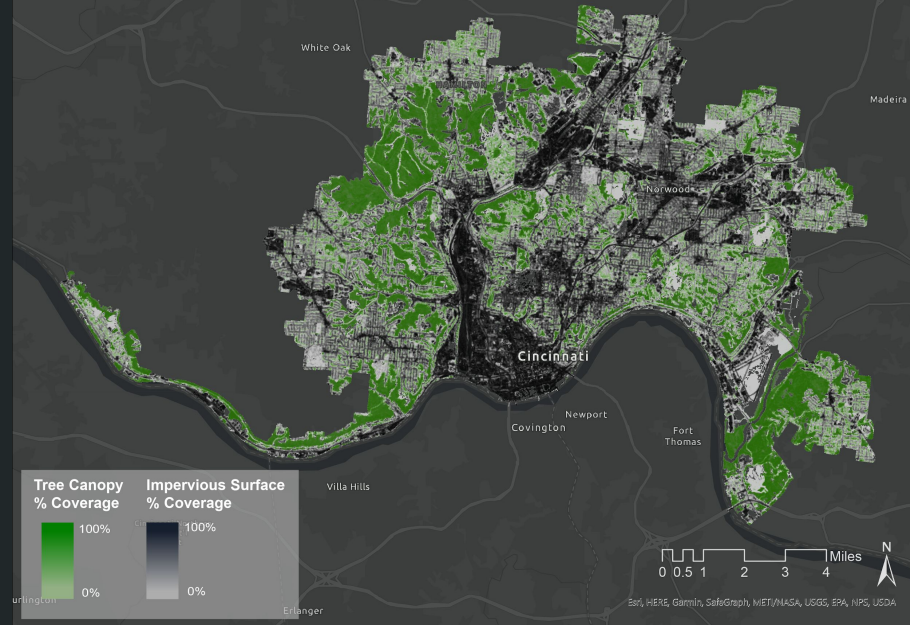
Surface Temperature Anomalies

Landsat 8 Satellite Imagery

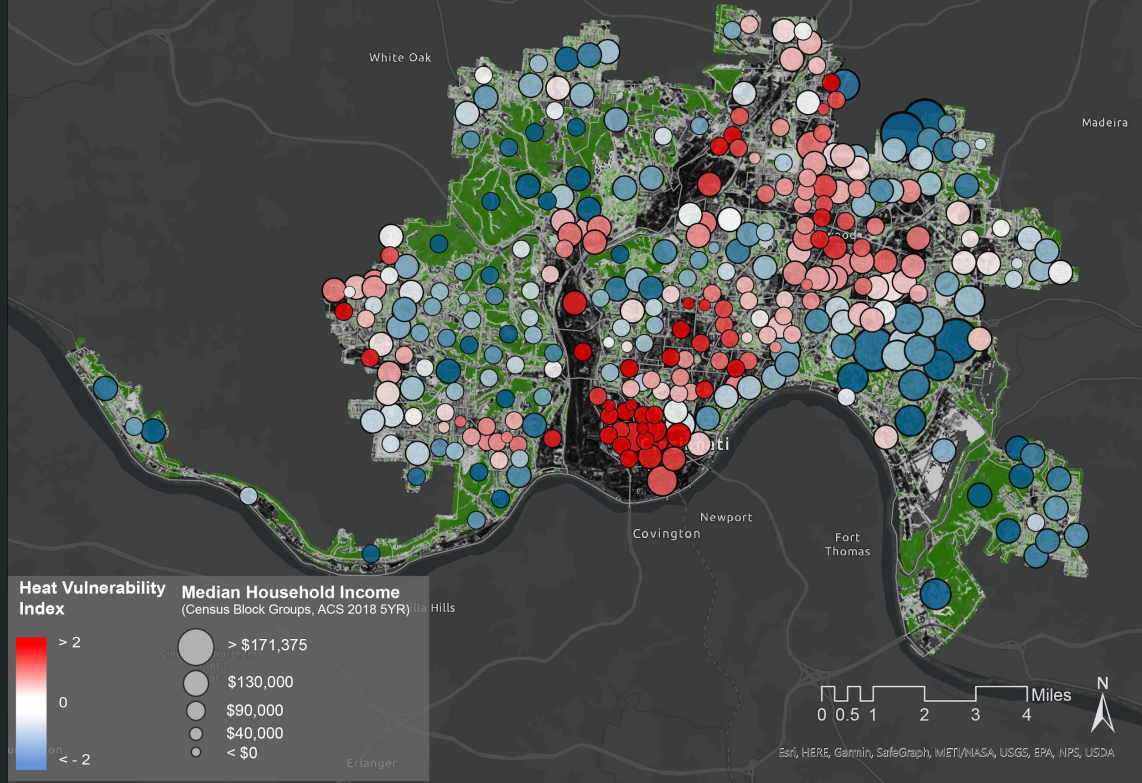


Tree Canopy Coverage & Impervious Surfaces

National Land Cover Database (NLDC) 2016

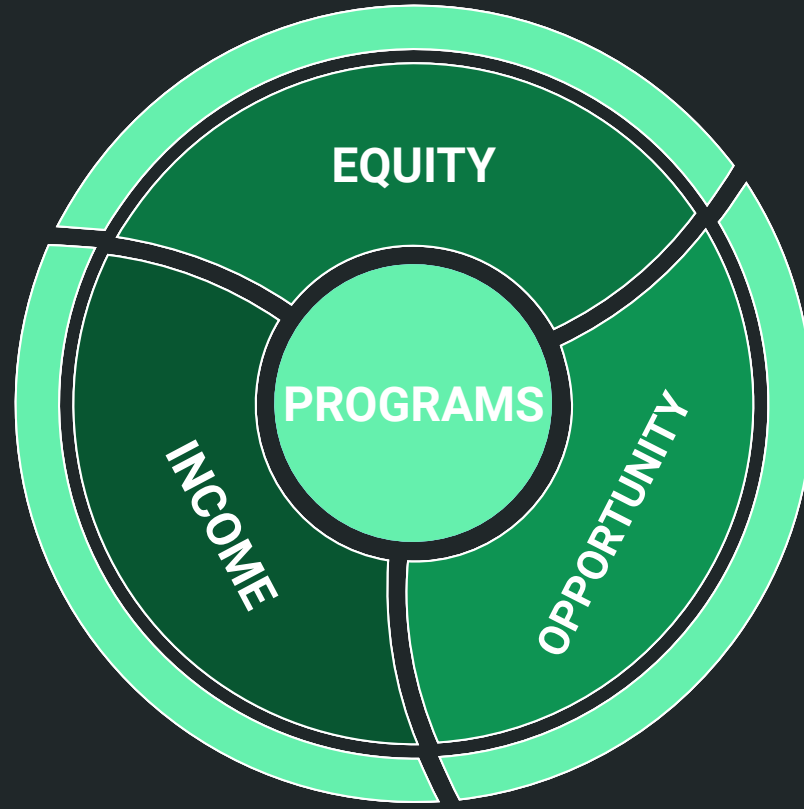


Heat Vulnerability Index & Median Household Income



Risk and Vulnerability

The Map



Green Team Program



Green Teamers build new trail in Bramble Park

- Paid high school green workforce program
- Environmental education + career preparedness
- Outdoor recreation

Green Team Outcomes



Green Teamers community spaces at the Green Learning Center

- General career readiness, intro to many green careers
- Importance of biodiversity
- Fresh food access
- How to safely recreate outdoors
- Appreciation of nature

In their own words...



Green Corps Program

- 'Step up' from Green Team
- Young adult green workforce program
 - Holistic
- Higher skill, more intensive



Anthony learns how to use a trencher in the building of an urban orchard

Applied Ecological Fieldwork





Technical
and
Sustainable
Trail
Building -
Community
Parks &
Greenspace

Green Infrastructure Design and Installation





GROUNDWORK

Ohio River Valley

