

EMERGENCY

City of Cincinnati

JRS *AWB*

An Ordinance No. _____ - 2021

ACCEPTING AND CONFIRMING the dedication to public use for right of way purposes the street known as Sanctuary Place and a portion of the street known as Renslar Avenue located in the California neighborhood of Cincinnati, in accordance with the plat entitled "*The Sanctuary at River Green Right of Way Dedication Plat.*"

WHEREAS, the City of Cincinnati ("City") and Panama RE Investments, LLC ("Developer") are parties to a *Property Sale and Development Agreement* dated December 1, 2017, pursuant to which Developer agreed to construct certain public infrastructure improvements including the public rights-of-way known as Sanctuary Place and a portion of the street known as Renslar Avenue (the "Public Infrastructure Improvements") in the California neighborhood of Cincinnati; and

WHEREAS, by virtue of a plat of subdivision entitled "*The Sanctuary at River Green Phase I,*" executed on February 21, 2018 and recorded on March 8, 2018 in Plat Book 464, pages 73-74, Hamilton County, Ohio Records, Developer dedicated certain portions of Sanctuary Place and Renslar Avenue to public use for right of way purposes; and

WHEREAS, Developer has completed construction of the Public Infrastructure Improvements and has prepared a right of way dedication plat entitled "*The Sanctuary at River Green Right of Way Dedication Plat*" to dedicate the Public Infrastructure Improvements to public use for right of way purposes forever, a copy of which is attached hereto as Attachment A (the "Dedication Plat"); and

WHEREAS, the City Manager, in consultation with the City Engineer, has examined the technical features of the Dedication Plat and found it to be correct, has inspected and approved the Public Infrastructure Improvements, and recommends that the Council accept the Public Infrastructure Improvements as public rights-of-way; and

WHEREAS, the City Planning Commission approved the Dedication Plat at its meeting on December 18, 2020; now, therefore,

BE IT ORDAINED by the Council of the City of Cincinnati, State of Ohio:

Section 1. That the City hereby accepts and confirms the dedication of the street known as Sanctuary Place and a portion of the street known as Renslar Avenue as public rights-of-way in accordance with the plat entitled "*The Sanctuary at River Green Right of Way Dedication Plat*"

(the "Dedication Plat"), which Dedication Plat is attached to this ordinance as Attachment A and incorporated herein by reference.

Section 2. That the City Solicitor shall cause an authenticated copy of this ordinance and the Dedication Plat to be filed with the Hamilton County, Ohio Auditor's Office and to be recorded in the Hamilton County, Ohio Recorder's Office.

Section 3. That the City Manager and other City officials are authorized to take all necessary and proper actions to carry out the provisions of this ordinance and to facilitate the dedication and acceptance of the public rights-of-way, including, without limitation, by executing the Dedication Plat and any and all ancillary real estate documents and by generating and installing any and all necessary street identification signs or other street signage.

Section 4. That this ordinance shall be an emergency measure necessary for the preservation of the public peace, health, safety, and general welfare and shall, subject to the terms of Article II, Section 6 of the Charter, be effective immediately. The reason for the emergency is the immediate need for the City to obtain control and provide maintenance to the dedicated rights-of-way at the earliest possible date.

Passed: _____, 2021

John Cranley, Mayor

Attest: _____
Clerk

ATTACHMENT A

THE SANCTUARY AT RIVER GREEN
 PHASE I
 RIGHT OF WAY DEDICATION PLAT

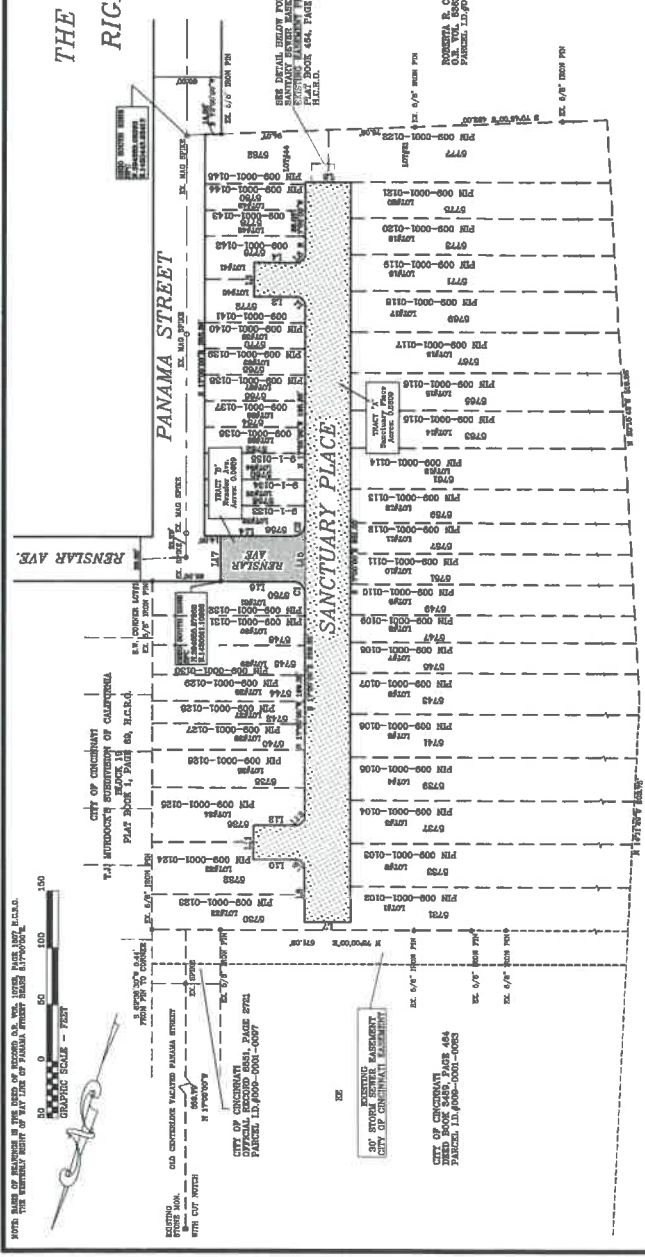
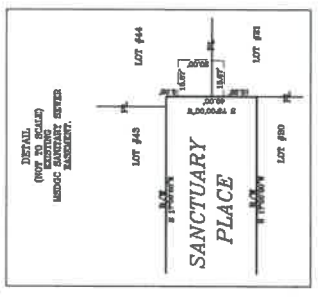
BENNETT TOMPKINS MILITARY SURVEY No. 395
 ANDERSON TOWNSHIP
 CITY OF CINCINNATI
 HAMILTON COUNTY, OHIO

THE SANCTUARY AT RIVER GREEN PHASE I RECORD PLAT IS RECORDED IN THE HAMILTON COUNTY RECORDS OFFICE AS PLAT BOOK 464, PAGE 75 & 74 E.C.E.D.

THIS DRAWING REPRESENTS THE SEPARATE INSTRUMENT FOR INDICATING THE RIGHT OF WAY RIGHTS IN THIS SUBDIVISION INSTRUMENT.

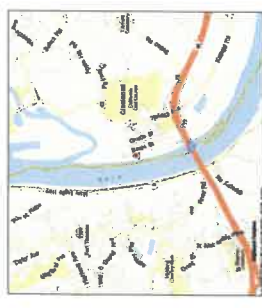
NOTE: OCCUPANT IN GENERAL THIS SHEET.
 NOTE: ALL WORKMANS IN GOOD CONDITION, UNLESS OTHERWISE NOTED.

OFFICE/DATE/NAME: PANAMA S.E. INVESTMENTS LLC



OHIO RIVER
 COMMONWEALTH OF KENTUCKY

Curve	Radius	Tangent	Length	Chord	Chord Bearer
C1	100.00'	0.00'	0.00'	0.00'	0.000000'
C2	100.00'	0.00'	0.00'	0.00'	0.000000'
C3	100.00'	0.00'	0.00'	0.00'	0.000000'
C4	100.00'	0.00'	0.00'	0.00'	0.000000'
C5	100.00'	0.00'	0.00'	0.00'	0.000000'
C6	100.00'	0.00'	0.00'	0.00'	0.000000'
C7	100.00'	0.00'	0.00'	0.00'	0.000000'
C8	100.00'	0.00'	0.00'	0.00'	0.000000'
C9	100.00'	0.00'	0.00'	0.00'	0.000000'
C10	100.00'	0.00'	0.00'	0.00'	0.000000'
C11	100.00'	0.00'	0.00'	0.00'	0.000000'
C12	100.00'	0.00'	0.00'	0.00'	0.000000'
C13	100.00'	0.00'	0.00'	0.00'	0.000000'
C14	100.00'	0.00'	0.00'	0.00'	0.000000'
C15	100.00'	0.00'	0.00'	0.00'	0.000000'
C16	100.00'	0.00'	0.00'	0.00'	0.000000'
C17	100.00'	0.00'	0.00'	0.00'	0.000000'
C18	100.00'	0.00'	0.00'	0.00'	0.000000'
C19	100.00'	0.00'	0.00'	0.00'	0.000000'
C20	100.00'	0.00'	0.00'	0.00'	0.000000'



TRACT "A"
 0.0600 Acres

Stationing	Point	North	East
0+00	1000	442.5119	501.6000
0+01	1001	442.5119	501.6000
0+02	1002	442.5119	501.6000
0+03	1003	442.5119	501.6000
0+04	1004	442.5119	501.6000
0+05	1005	442.5119	501.6000
0+06	1006	442.5119	501.6000
0+07	1007	442.5119	501.6000
0+08	1008	442.5119	501.6000
0+09	1009	442.5119	501.6000
0+10	1010	442.5119	501.6000
0+11	1011	442.5119	501.6000
0+12	1012	442.5119	501.6000
0+13	1013	442.5119	501.6000
0+14	1014	442.5119	501.6000
0+15	1015	442.5119	501.6000
0+16	1016	442.5119	501.6000
0+17	1017	442.5119	501.6000
0+18	1018	442.5119	501.6000
0+19	1019	442.5119	501.6000
0+20	1020	442.5119	501.6000
0+21	1021	442.5119	501.6000
0+22	1022	442.5119	501.6000
0+23	1023	442.5119	501.6000
0+24	1024	442.5119	501.6000
0+25	1025	442.5119	501.6000
0+26	1026	442.5119	501.6000
0+27	1027	442.5119	501.6000
0+28	1028	442.5119	501.6000
0+29	1029	442.5119	501.6000
0+30	1030	442.5119	501.6000

TRACT "B"
 0.0600 Acres

Stationing	Point	North	East
0+00	1031	442.5119	501.6000
0+01	1032	442.5119	501.6000
0+02	1033	442.5119	501.6000
0+03	1034	442.5119	501.6000
0+04	1035	442.5119	501.6000
0+05	1036	442.5119	501.6000
0+06	1037	442.5119	501.6000
0+07	1038	442.5119	501.6000
0+08	1039	442.5119	501.6000
0+09	1040	442.5119	501.6000
0+10	1041	442.5119	501.6000
0+11	1042	442.5119	501.6000
0+12	1043	442.5119	501.6000
0+13	1044	442.5119	501.6000
0+14	1045	442.5119	501.6000
0+15	1046	442.5119	501.6000
0+16	1047	442.5119	501.6000
0+17	1048	442.5119	501.6000
0+18	1049	442.5119	501.6000
0+19	1050	442.5119	501.6000
0+20	1051	442.5119	501.6000
0+21	1052	442.5119	501.6000
0+22	1053	442.5119	501.6000
0+23	1054	442.5119	501.6000
0+24	1055	442.5119	501.6000
0+25	1056	442.5119	501.6000
0+26	1057	442.5119	501.6000
0+27	1058	442.5119	501.6000
0+28	1059	442.5119	501.6000
0+29	1060	442.5119	501.6000
0+30	1061	442.5119	501.6000

DATE: 4/10/2019
 SCALE: 1"=50'
 SHEET # OF 2