

# Cincinnati Safe Routes to School Plan Update



**Tiffany White MPH, RD, LD, CLC**  
*Tiffany.White@Cincinnati-OH.gov*



**Scott Dean MPH**  
*William.Dean@Cincinnati-OH.gov*

# What is a SRTS Plan

- The city's focus is on **youth pedestrians** to make it safer for students to walk and bike to school
- This plan will assist in developing and implementing initiatives and projects to help **eliminate** roadway related deaths and severe injuries, while **increasing safe, healthy, equitable mobility for all**



# What is a SRTS Plan

## ODOT SRTS Funding

- **Infrastructure projects** within two miles of schools serving K-12 students. ODOT will reimburse up to 100% of eligible costs for all phases, including preliminary engineering, detailed design, right-of-way, construction, and construction engineering.
  - Project limit: \$1,000,000.
- **Non-infrastructure activities such as education, encouragement, enforcement or evaluation.** ODOT will reimburse up to 100% of eligible costs for items such as training and materials, program supplies, small safety and education incentives, and public awareness campaigns.
  - Project limit: \$60,000 or \$120,000 for a two-year project.



Department of  
Transportation



# Progress on the Previous SRTS Plan

School name	What it has	What's been constructed	SVI
Rothenberg Prep Academy	Non-flashing speed sign Painted crosswalk Schoolzone sign Speed limit sign Crossing guard	Bump-out and raised crosswalk on Main St @ E Clifton Ave (2026 construction)	0.79
George Hays-Jennie Porter School	Non-flashing speed sign Painted crosswalk Schoolzone sign Speed limit sign Crossing guard	All-way stop at Court & Mound. Upcoming redesign of Linn St (2027). Concept improvement plans on Court St.	0.81
South Avondale School	Flashing speed sign Painted crosswalk Crosswalk sign speedbump Schoolzone sign speed limit sign Crossing Guard	Reading Rd speed cushions. Future BRT on Forest Ave and Reading Rd north of Forest.	0.93
Carson School	Flashing speed sign Painted crosswalk Crosswalk sign speedbump Schoolzone sign speed limit sign Crossing Guard	Glenway Ave redesign and speed cushions	0.7
Rees Evan Price Academy	Flashing speed sign Painted crosswalk Crosswalk sign speedbump Schoolzone sign speed limit sign Crossing Guard	Glenway Ave speed cushions	0.95



# Why Update the SRTS Plan?

- Outdated plan
- Significant road changes
- School restructuring
- CHC Grant - TA from Toole Designs

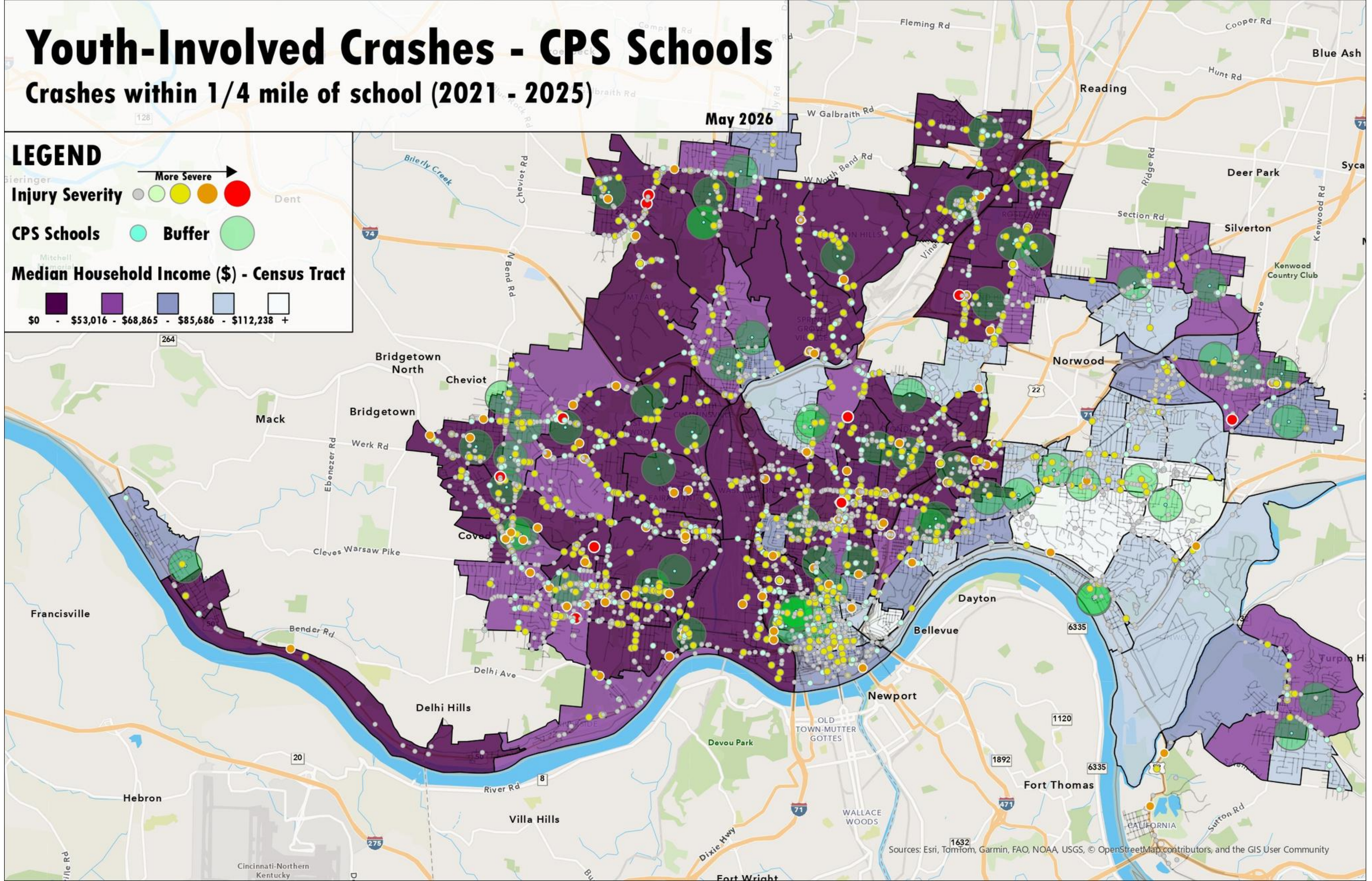
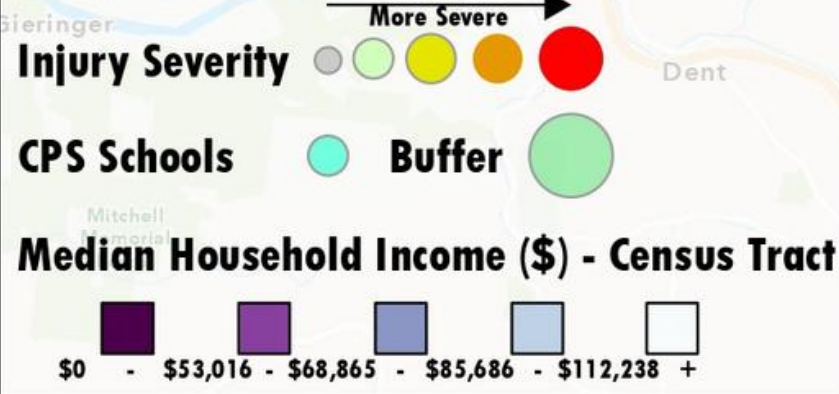


# Youth-Involved Crashes - CPS Schools

Crashes within 1/4 mile of school (2021 - 2025)

May 2026

## LEGEND



Sources: Esri, TomTom, Garmin, FAO, NOAA, USGS, © OpenStreetMap contributors, and the GIS User Community

# WEST CORRIDOR SCHOOL PATHWAYS AND SELECTION OPTIONS

2026-2027



## Select Your School

Join Cincinnati Public Schools and experience a new era in education. Explore the diverse school options near you in the corridor where you live — East, West or Central.

### Questions?

Contact the CPS Customer Care Center by calling **513-363-0123**, emailing [schoolselection@cps-k12.org](mailto:schoolselection@cps-k12.org) or visiting the **CPS Education Center**  
2651 Burnet Avenue, Cincinnati, OH 45219



Additional information available at [cps-k12.org/SchoolSelection](https://cps-k12.org/SchoolSelection)

### EARLY LEARNING CENTERS/ PRESCHOOL

- Rising Stars at Cheviot/Westwood



### ELEMENTARY SCHOOLS

- PreK-Grade 5**
- Mt. Airy School

- Kindergarten-Grade 5**
- Westwood School

- Pre-K-Grade 6**
- Carson School
  - Chase School
  - Cheviot School
  - Covedale School
  - Midway School
  - Rees E. Price Academy
  - Roll Hill School

- PreK-Grade 7**
- LEAP Academy

- PreK-Grade 8**
- Roberts Academy

- Montessori (PreK-Grade 6)**
- Dater Montessori
  - Gamble Montessori

#### Options Include

- Montessori (PreK-Grade 6)**
- Parker Woods Montessori

### MIDDLE SCHOOLS

- Grades 7-8**
- Ethel M. Taylor Academy

### HIGH SCHOOLS

- Grades 7-12**
- Gilbert A. Dater High School

- Grades 9-12**
- Western Hills High School

- Montessori (Grades 7-12)**
- Gamble Montessori High School

### COMBINATION

- PreK-Grade 9**
- Saylor Park School

- PreK-Grade 12**
- Oylar School

#### Options Include

- Grades 7-12**
- Taft High School

- Grades 9-12**
- Aiken High School
  - Hughes STEM High School
  - Shredler High School
  - Withrow University High School
  - Woodward Career Technical High School

### DISTRICTWIDE

- PreK-Grade 6**
- Fairview-Clifton German Language School

- PreK-Grade 8**
- Academy of Multilingual Immersion Studies (AMIS)
  - Academy of World Languages (AWL)

- Kindergarten-12**
- John G. Gilligan Digital Academy
  - School for Creative and Performing Arts (SCPA)\*

- Grades 3-12**
- Spencer Center for Gifted and Exceptional Students\*

- Grades 7-12**
- Dr. O'dell Owens Center for Learning (7-12)
  - Walnut Hills High School\*

- Grades 9-12**
- Virtual High School

\*Denotes qualifying entrance requirements

School	Grade Group	School Level	Total Crashes within 1/4 mile	Household Income		Serious Injury and Fatal Crashes
Western Hills High School	High School	Grades 9-12	48	58182	2	4
Gilbert A. Dater Highschool	High School	Grades 7-12	34	58182	2	4
Oyler School	High School	Preschool - Grade 12	21	16731	1	1
Gamble Montessori	Elementary	Preschool - Grade 6	21	29895	1	1
Midway School	Elementary	Preschool - Grade 6	18	47796	1	1
Mt. Airy School	Elementary	Preschool - Grade 5	23	49188	1	1
Dater Montessori	Elementary	Preschool - Grade 6	26	50750	1	1
Ethel Mae Taylor Academy	Middle School	Grades 7-8	3	8956	1	0
LEAP Academy	Elementary	Preschool - Grade 7	1	24737	1	0
Roll Hill School	Elementary	Preschool - Grade 6	2	29895	1	0
Rees Evan Price Academy	Elementary	Preschool - Grade 6	26	31557	1	0
Roberts Academy	Elementary	Preschool - Grade 8	0	35813	1	0
Rising Stars at Cheviot/Westwood	Early Learning	Early Learning/Preschool	10	54609	2	0
Carson School	Elementary	Preschool - Grade 6	36	59185	2	0
Chase School	Elementary	Preschool - Grade 6	6	60662	2	0
Parker Woods Montessori School	Elementary	Preschool - Grade 6	2	66458	2	0
Gamble Montessori High School	High School	Grades 7-12	34	67465	2	0
Westwood School	Elementary	Kindergarten - Grade 5	28	67465	2	0
Sayler Park School	High School	Preschool - Grade 9	1	80114	3	0

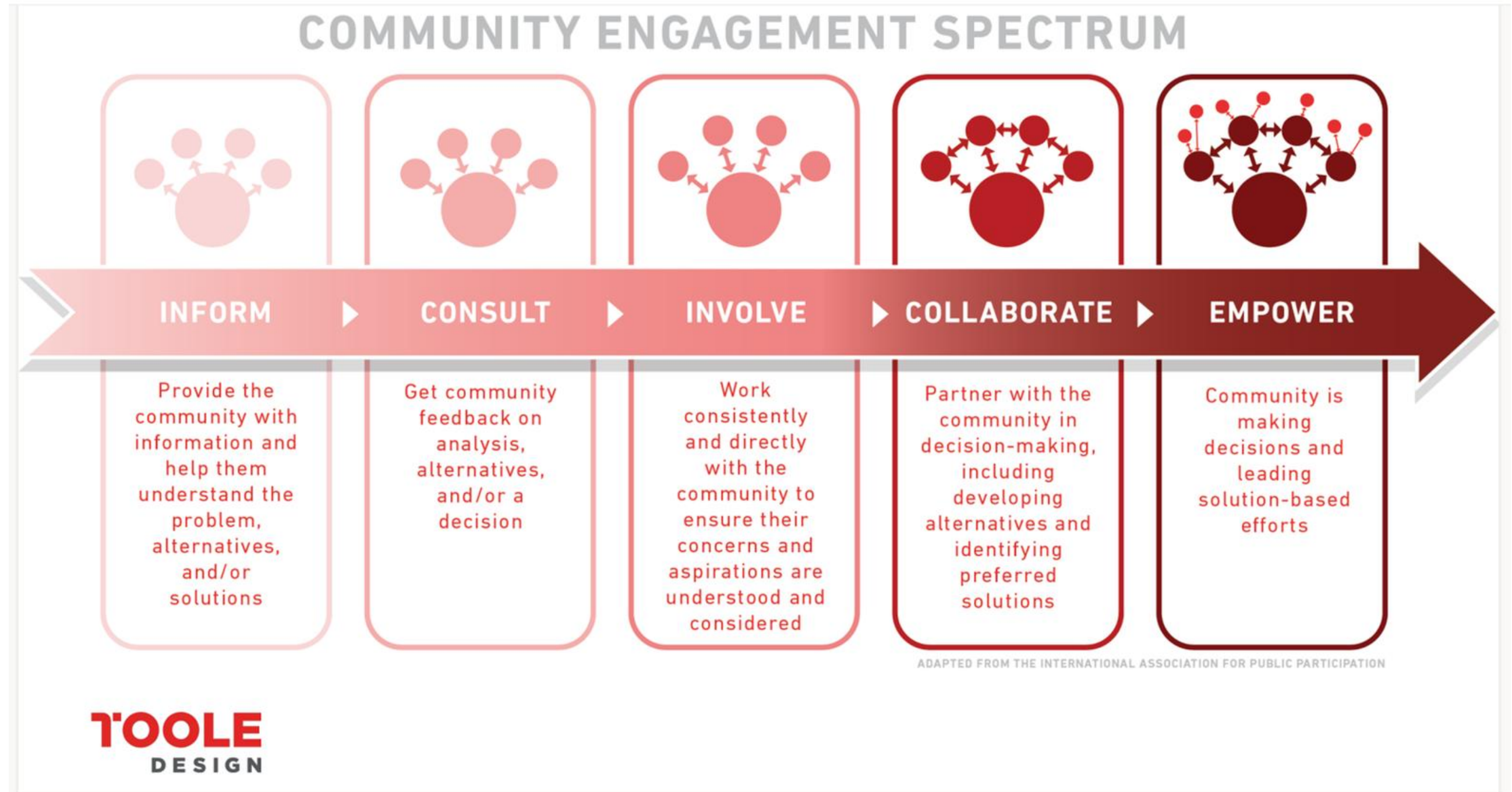
# Teams

- Quantitative Data Working Groups
- Engagement Working Groups



# Community Engagement Approach

- Surveys
- Mapping
- Walk audits
- Townhalls



# Next Steps

- Confirm advisory team members.
- Finalize school prioritization and commitment.
- Engagement efforts in fall 2026.
- Finalized plan before January 2027.

# Questions