



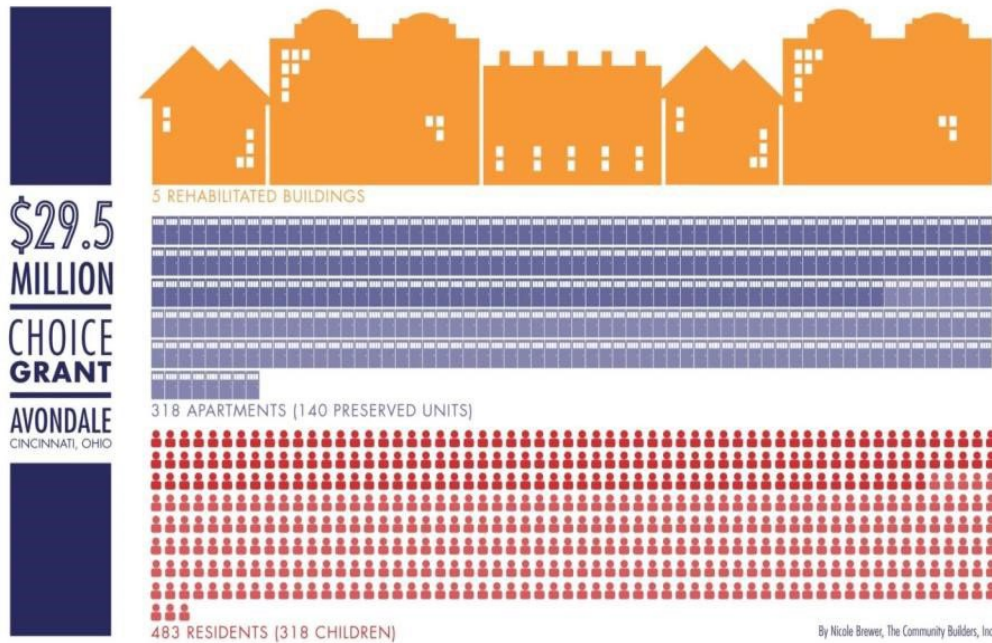
RESIDENCES

at Avondale Town Center



Choice Neighborhoods Transformation

The Community Builders, in partnership with local stakeholders, implemented a **Transformation Plan** for the comprehensive and sustainable revitalization of the Avondale community. Avondale's primary thoroughfare, Reading Road, saw redevelopment of buildings and community infrastructure in order to improve the health of the housing market, improve community resources, and re-establish Avondale as a community of choice.



Driven By Local Vision





Residential Units

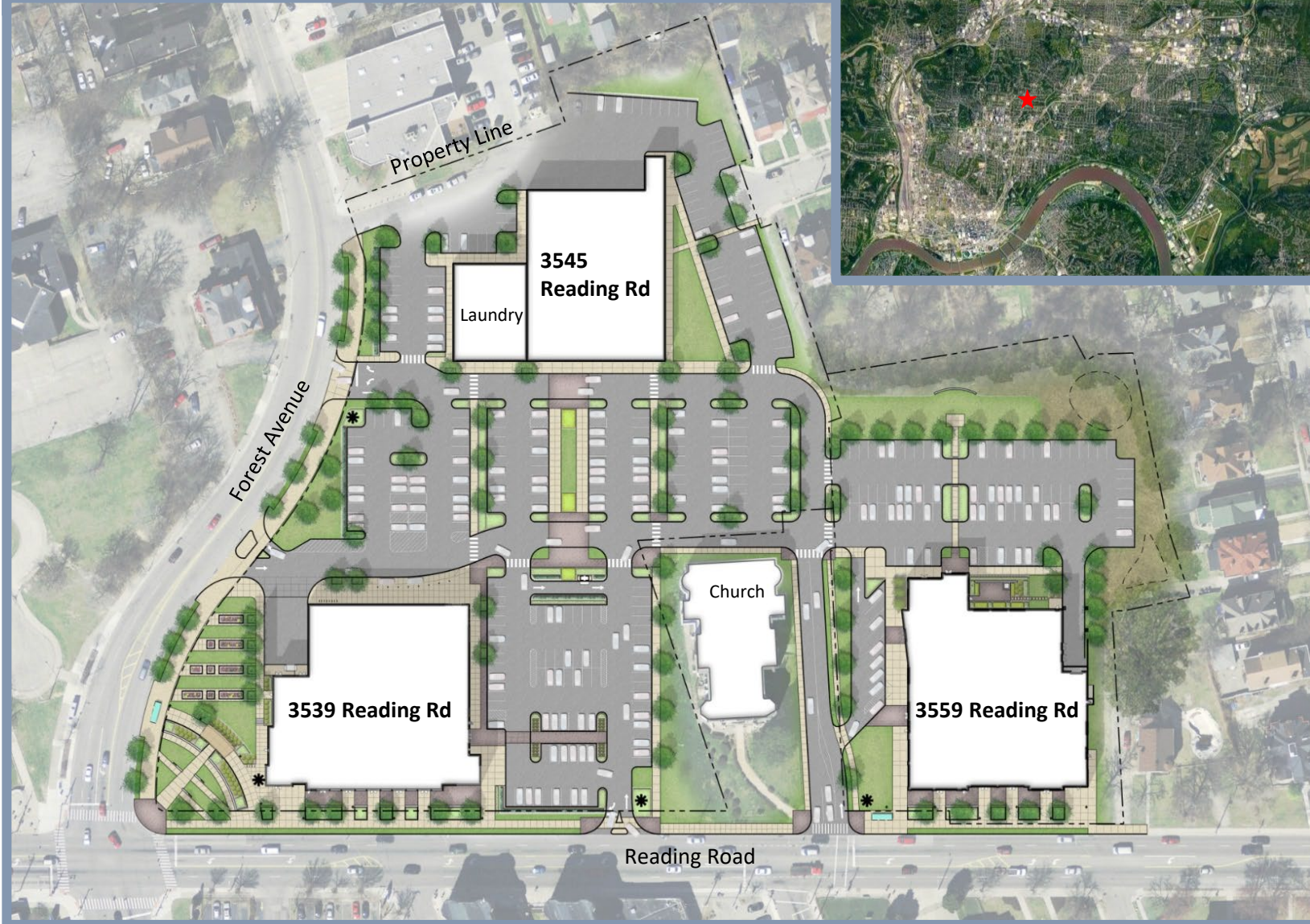
- 55 at 120% AMI
- 14 at 80% AMI
- 42 at 60% AMI
- 8 at 30% AMI

Commercial Space

- 76,000 Gross SF



Avondale Town Center





Thank You Project Partners!

THE COMMUNITY BUILDERS Avondale Coalition of Churches



CINCINNATI DEVELOPMENT FUND



UPTOWN CONSORTIUM, INC.

OHIO HOUSING FINANCE AGENCY

JPMORGAN CHASE & Co.



ArtWorks



capital for healthy families & communities



Cincinnati Children's



MKSK Landscape Architects Bayer Becker KMK WEB Ventures Klein Hornig Powernet CMHA Moody Nolan Architects Lee & Associates



Transformation Without Displacement



Quality Housing For
All Incomes

Services and Amenities
Found in a Healthy
Community

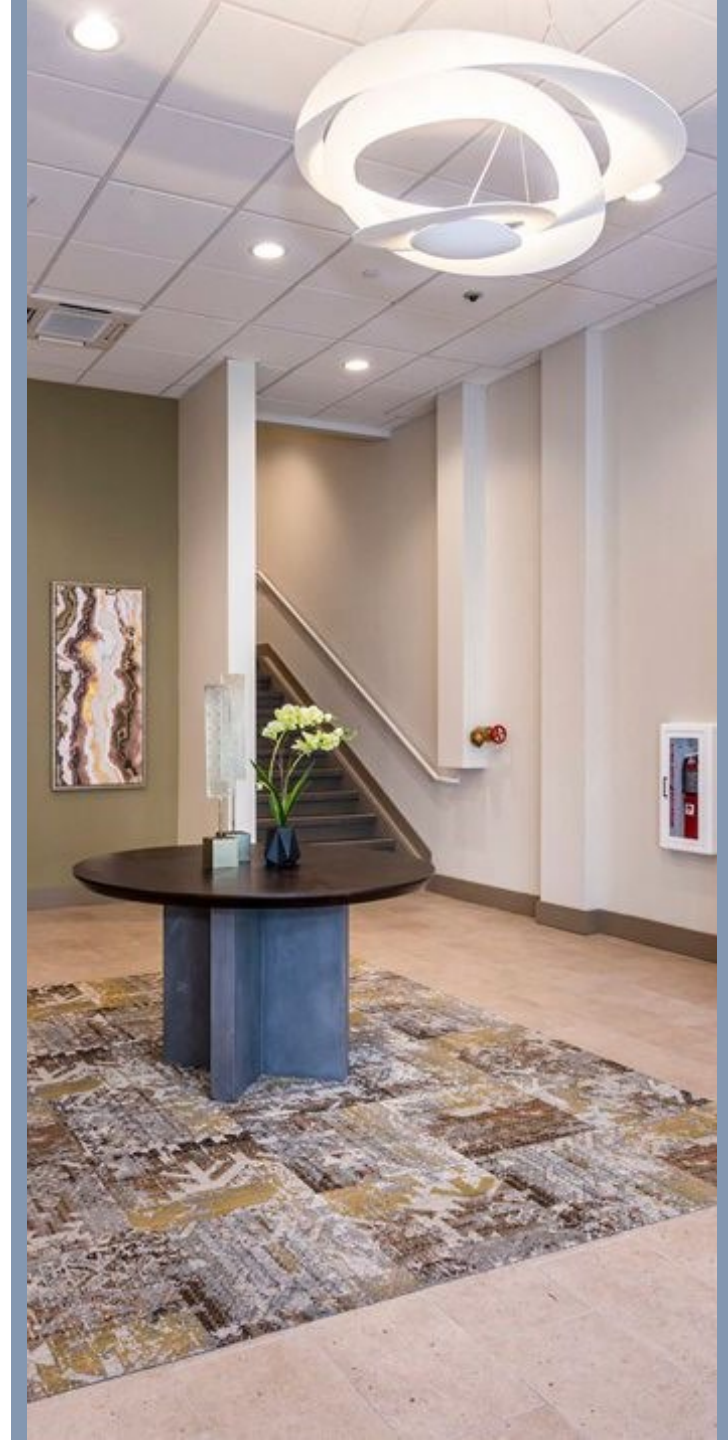
Building On Community
Pride and Identity

Opportunity Contract
and Hiring

High Quality Housing



Resident Centered Design





Emphasize Local and Black-Owned Businesses

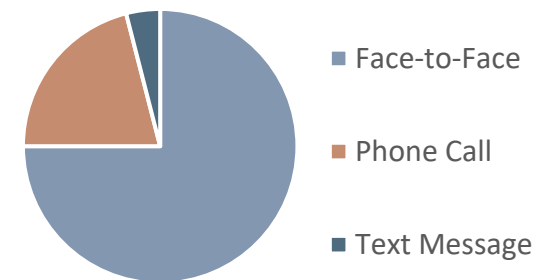


Health Champion (HC) Program

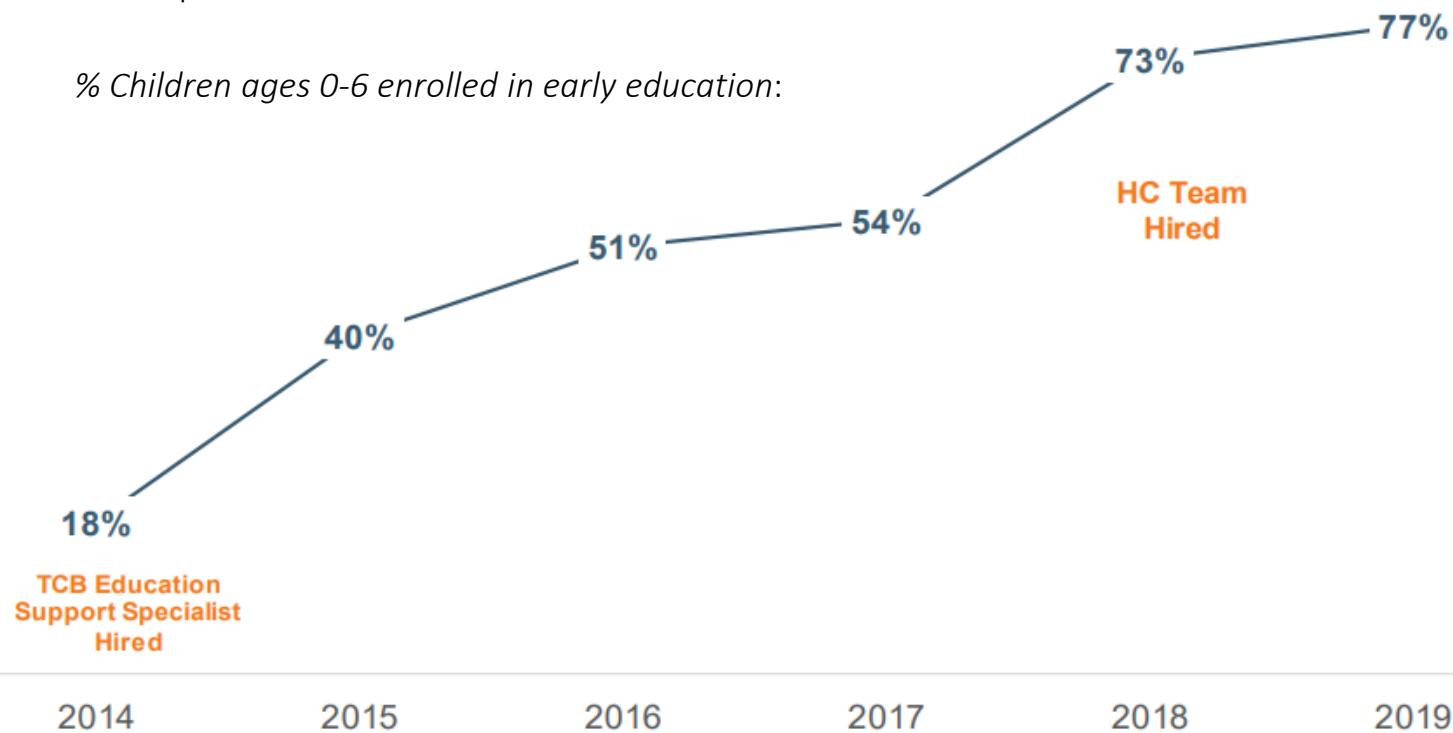
This TCB initiated HC program supports residents through mentorship and connecting them with needed resources:

- Educate on safe sleeping techniques for newborns.
- Improved access to primary and prenatal care.
- Coach mothers to adopt healthy behaviors.
- Increased access to more healthy food.
- Advocate for mothers to breastfeed.
- Promote Childhood Early Literacy.
- Assist in preschool enrollment.

Interaction Medium

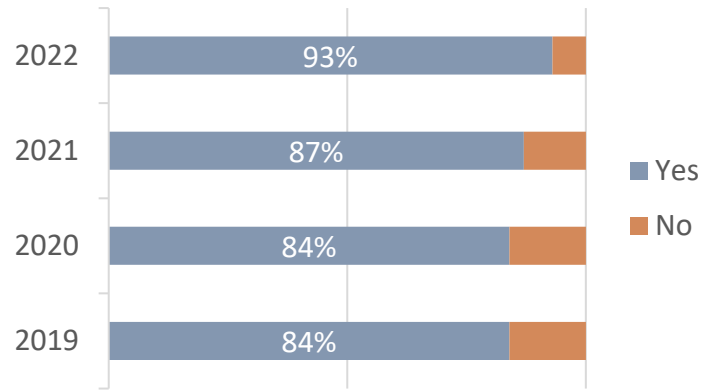


% Children ages 0-6 enrolled in early education:

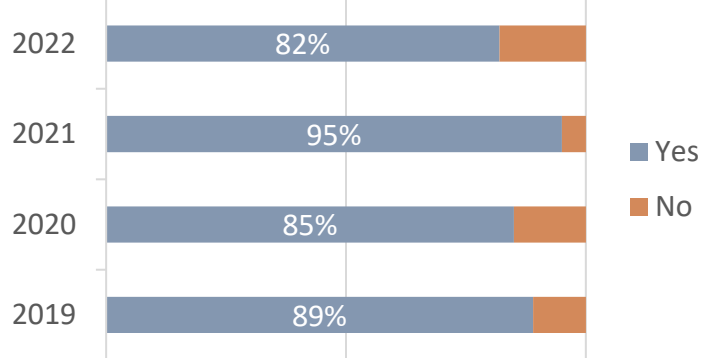




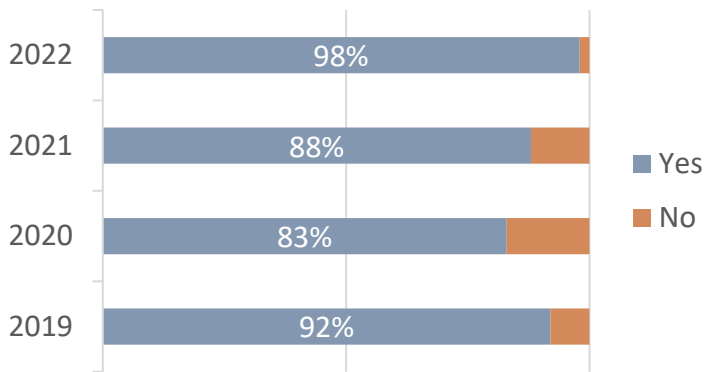
Connected to Education



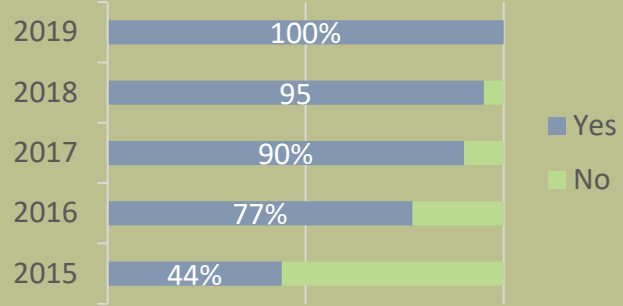
Registered to Vote



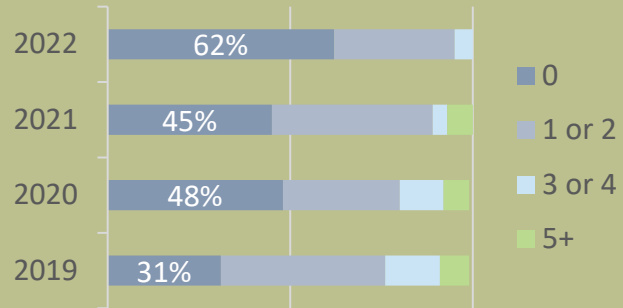
Has Internet



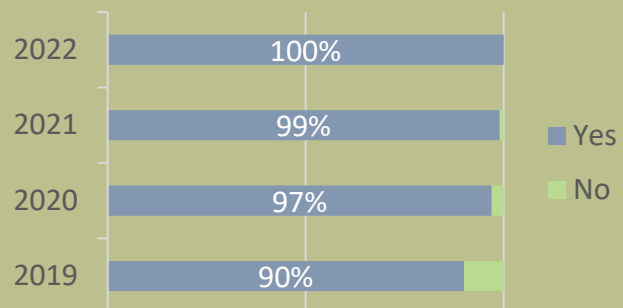
Children with Primary Care



ER Visits



Insured



Sustained Community Involvement



THE COMMUNITY
BUILDERS

