



OUR MISSION

Price Hill Will is a nonprofit community development corporation servicing the neighborhoods of East, West, and Lower Price Hill in Cincinnati, Ohio.

Our mission is to improve the quality of life for all residents of Price Hill using an equitable, creative, and asset-based approach to physical, civic, social, and economic development. We help residents, particularly residents with lower income or formal education levels, immigrants, and people of color, build on their assets and gain skills as we connect them with resources to improve their quality of life. We achieve this via community leadership development, community gardens, neighborhood business district planning and revitalization, residential and commercial real estate development, our MYCincinnati 125-member youth orchestra, arts and cultural events, and many other programs.

COMMUNITY ENGAGEMENT



COMMUNITY ENGAGEMENT



MYCINNATI

MYCincinnati's mission is to use ensemble-based instrumental music as a tool for youth development and community engagement by providing children with access to free, intense, high-quality music education.



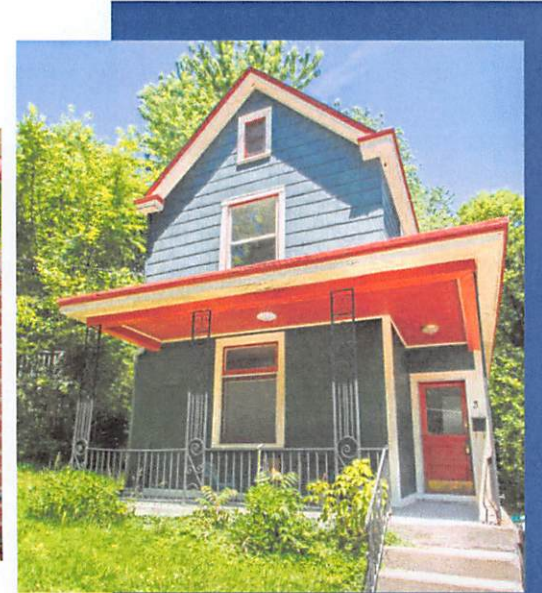
PRICE HILL HARMONIC

- 50+ member free adult orchestra
- Community building opportunity
- Beginner + intermediate



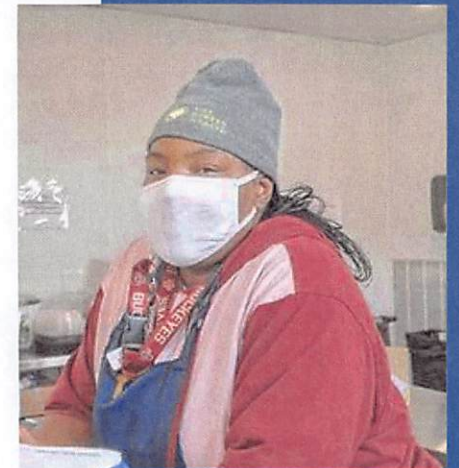
HOMESTEADING

- Rapid equity building
- PHW, Santa Maria, Legal Aid, WIN, Catholic Charities, The Port, LISC
- PHW acquires vacant properties, brings them up to code, and then sells them via 5-year, 0% interest land contract to families below 65% of ami
- Families complete cosmetic work
- 15 families in homes; 2 families paid off early
- 6 owners are Black, 8 are Latinx, 1 White
- No Homestead homeowner has defaulted on their land contract
- 100% of Homesteaders report that their quality of housing has improved their life





- NBDIP funds from City for acquisition/renovation
- *Your Store of the Queen City* nonprofit grocery/deli operator
- Outerspace w LPH Artist Collective
- Redbike Station - summer 2022!



ARCO

Arts + Community

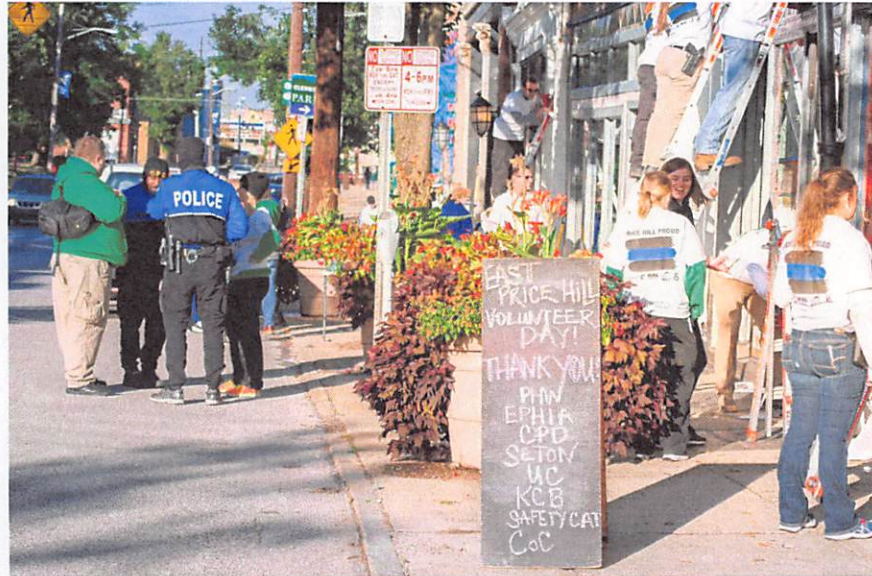




**WARSAW
ALIVE**

WARSAW CORRIDOR REVITALIZATION

Shotspotter, PIVOT, Pedestrian Safety



WARSAW AVENUE CREATIVE CAMPUS

- Use the arts to connect youth and families to revitalize Warsaw NBD
- Gateway to EPH
- Affordable housing, family-centric arts organizations, and commercial opportunities
- Created local and national historic districts
- Model Group, City Studios, CDF, 5/3, LISC
- HTC + NMTCS + NOFA + NBDIP = \$10m



WARSAW AVENUE CREATIVE CAMPUS



- ★ PHW-owned
- ★ Santa Maria-owned
- ★ Public nuisance (The Port)





WPH RESTAURANT / BEER GARDEN / CRAFT BREWERY



BELONG, BE STRONG
WEST PRICE HILL

- Focus on two Glenway NBDs and proposed W 8th node
- Support existing businesses and attract new businesses
- Traffic calming



- WPHCC wanted to save buildings
- PHW acquired from The Port with CDBG funds
- Community gathering place
- Partnership with Daffin Development + Cafeo Hospitality
- Phased project, finalizing design





Thank
You!

