

## **Exhibit B**

### (Residential Tax Abatement Neighborhood Tiers)

Based upon the Criteria, as of the date of this ordinance, City Council hereby categorizes the fifty-two neighborhoods of the City of Cincinnati in accordance with the below tables for the purposes of determining the level of incentive for each neighborhood, as designated by the community council boundaries for such neighborhood and depicted on maps adopted by the Housing Officer. City Council intends to re-evaluate the below designations upon receipt of the Housing Officer's recommendations every three years.

<b>SUSTAIN (5-6 Criteria)</b>	
Columbia Tusculum	Mt. Adams
Hyde Park	Mt. Lookout
Linwood	Oakley

<b>EXPAND (3-4 Criteria)</b>	
California	Madisonville
Clifton	Northside
Downtown	Over-the-Rhine
East End	Pendleton
East Walnut Hills	Pleasant Ridge

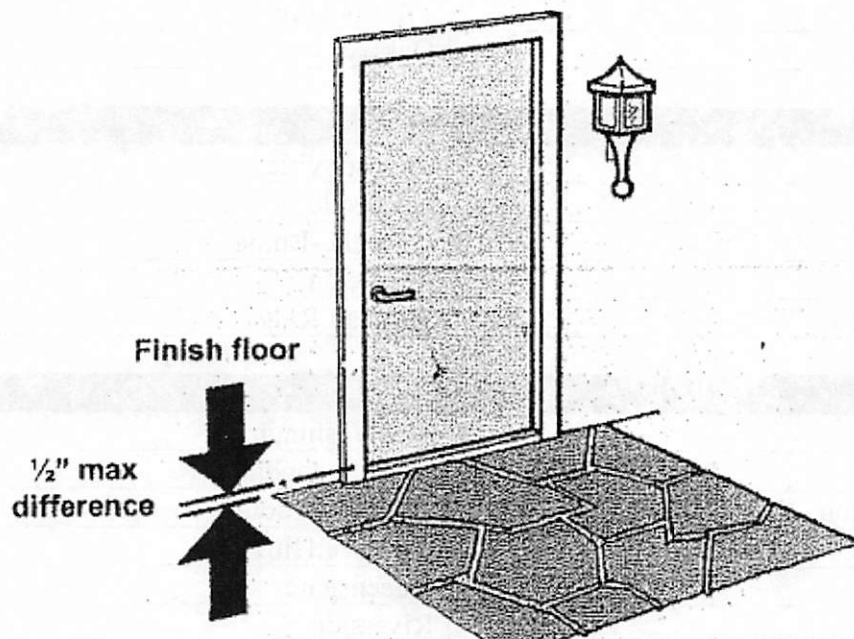
<b>LIFT (0-2 Criteria)</b>	
Avondale	Mt. Washington
Bond Hill	North Avondale
Camp Washington	North Fairmount
Carthage	Paddock Hills
College Hill	Queensgate
Corryville	Riverside
CUF	Roselawn
East Price Hill	Sayler Park
East Westwood	Sedamsville
English Woods	South Cumminsville
Evanston	South Fairmount
Hartwell	Spring Grove Village
Heights	Villages at Roll Hill
Kennedy Heights	Walnut Hills
Lower Price Hill	West End
Millvale	West Price Hill
Mt. Airy	Westwood
Mt. Auburn	Winton Hills

## Exhibit C

(Cincinnati Visitability and Universal Design Standards and Visitability+)

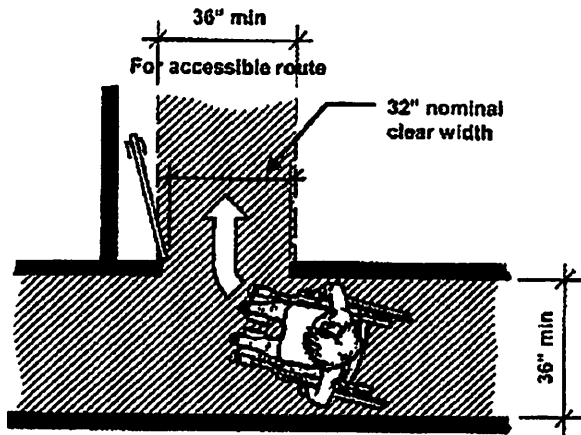
### **Cincinnati Visitability and Universal Design Standards (A-D)**

(A) No Step Entrance. The dwelling unit must provide at least one “No Step Entrance.” The required No Step Entrance must be visitable from the driveway or public way via a Visitable Path. “No Step” means no greater than a one-half inch ( $\frac{1}{2}$ ”) elevation change unless access is provided using a code compliant ramp under the Residential Code of Ohio or the Ohio Building Code, as applicable.



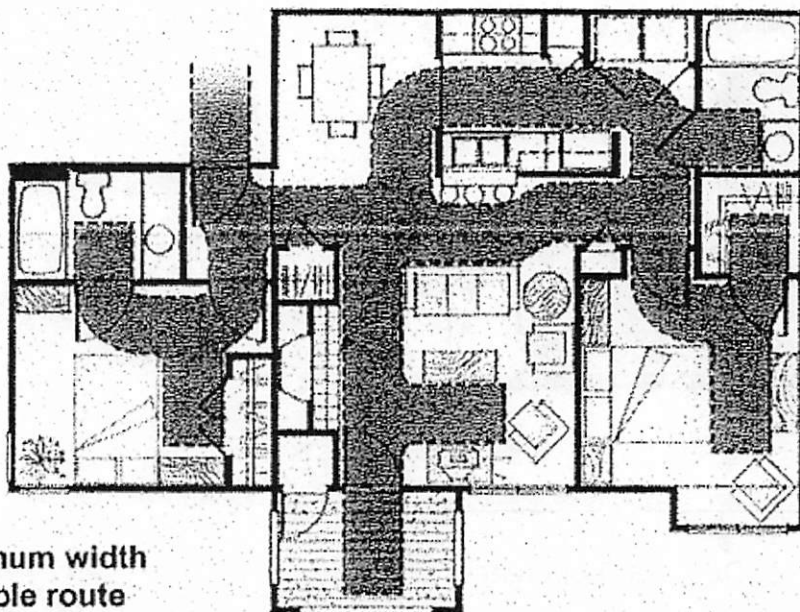
1. At least one  
no step entrance  
via a visitable path

(B) Visitable Path. All hallways and corridors from the No Step Entrance to the central gathering place of the residence (e.g., great room, living room, or family room) (the “Central Gathering Place”) and the Visitable Bathroom must be Visitable Paths. A “Visitable Path” means a No Step path of travel with a continuous minimum net clear width of at least thirty-six inches (36”).



2. Doors and openings along the visitable route shall have a minimal net clear width of 32”.

(C) Doors/Openings. All doors and openings along the Visible Path from the No Step Entrance to the Central Gathering Place shall have a minimum net clear width of at least thirty-two inches (32”), including the doorway to at least one Visible Bathroom along the Visible Path.

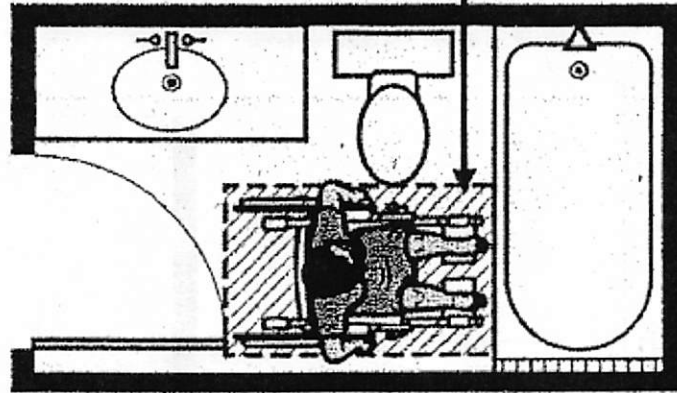


3. Hallways and corridors from the no step entrance to at least one visible common living space are at least 36" wide.

(D) Visible Bathroom. There shall be at least one Visible Bathroom located on a Visible Path between the Central Gathering Place and the No Step Entrance. “Visible Bathroom” means

a full bathroom, half bathroom, or powder room having a clear floor space of at least thirty inches by forty-eight inches (30" x 48").

30"x48" outside swing of door

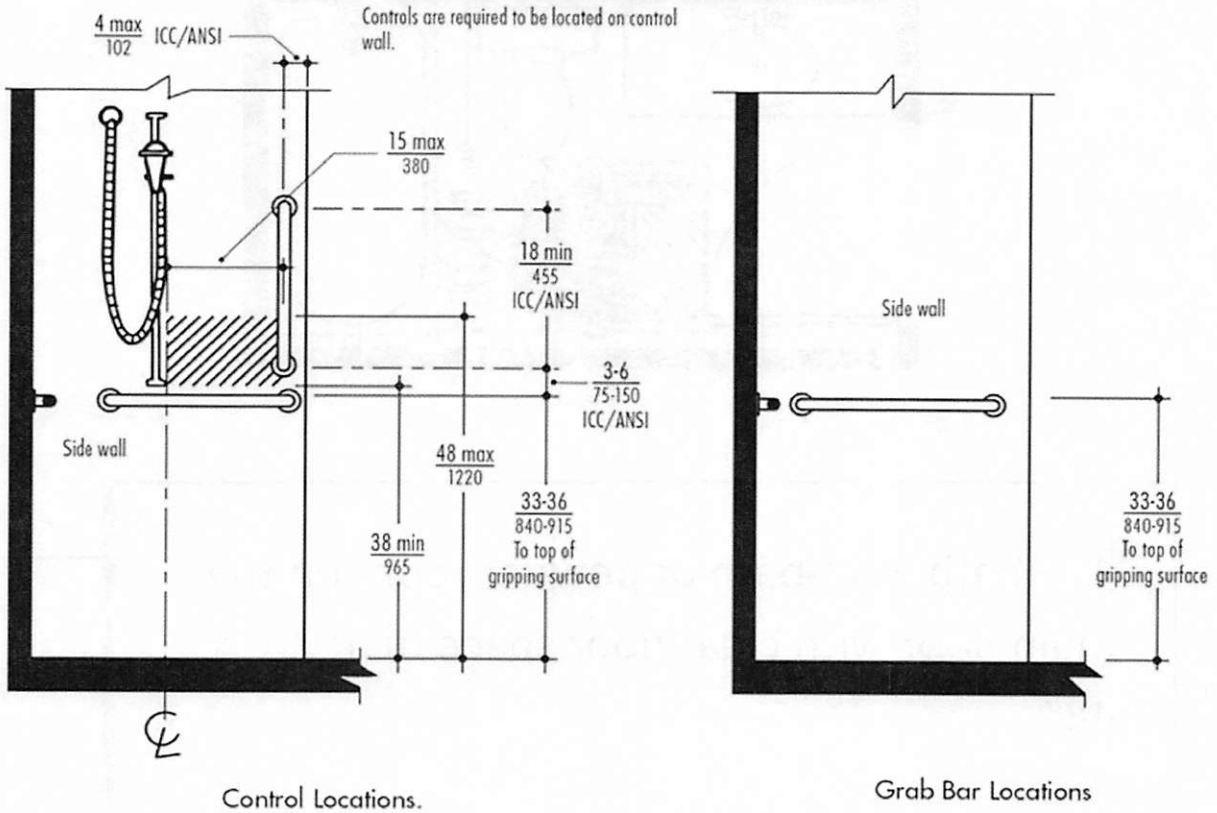


4. A bath, half-bath or powder room on the main floor with clear floor space of at 30" x 48"

### Requirements for Visitability+

- A. Must meet Cincinnati Visitability and Universal Design Standards to be eligible for Visitability+; and
- B. Minimum of one accessible bedroom and one accessible full bathroom on the ground level (or elevator accessible). Examples of features or options for an accessible full bathroom are below.

### Shower Features and Grab Bars



### Lavatory Faucet Features

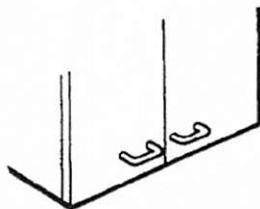
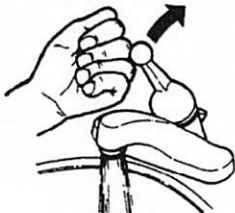
### Cabinet Handle Features

### Door Handle Features



Lever Faucet Handles

a single lever is the easiest faucet handle for most people to use



Loop Handles Horizontally Mounted



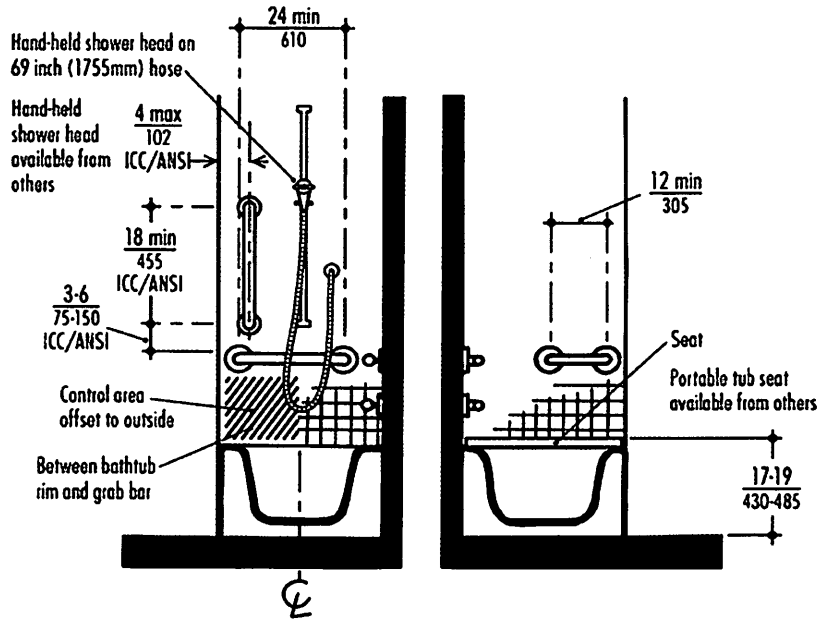
Lever Handle



Loop Handle

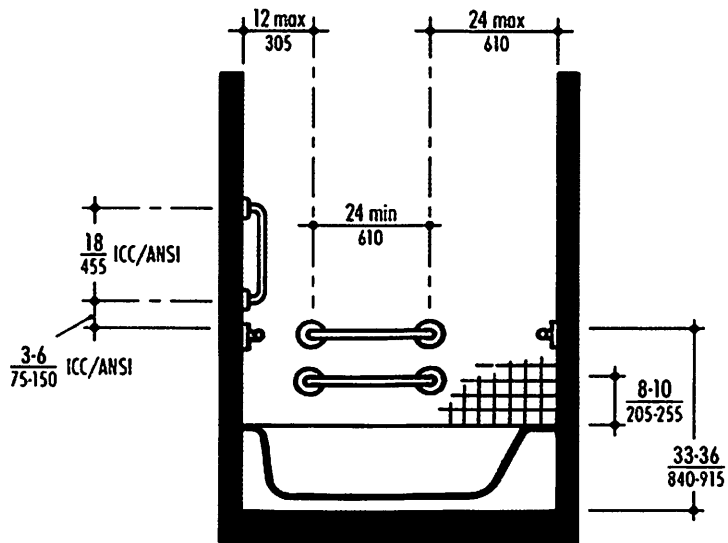
lever and large loop handles are easiest to use with one hand

## Tub Features and Grab Bars



Control Wall.

Head of Tub.



Back Wall.