

Reinventing METRO

The Metro Rider  
August 2020

 RIDING IS BELIEVING.





## Why we are here

### SORTA's Mission

Regional transportation connecting people and places, driving economic growth and expanding quality of life choices.



Reinventing METRO\*



## Who we serve

### METRO



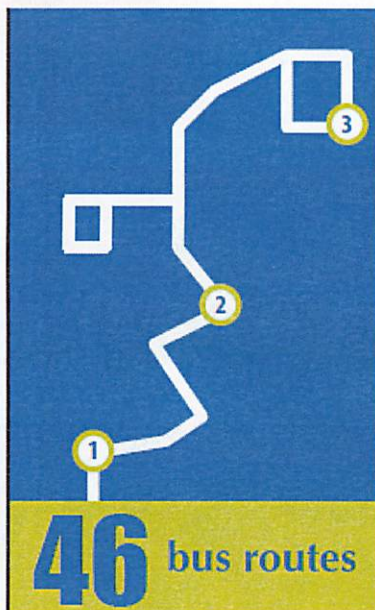
Annual Ridership

**14 million**  
PASSENGER TRIPS

**1 in 5**



Downtown workers commute on Metro



**46** bus routes

### ACCESS



Annual rides

**227,000**



**2,700**  
Eligible riders.

Service eligibility based on criteria set by Americans with Disabilities Act.

Reinventing METRO\*



## 2018 Metro Ridership Survey

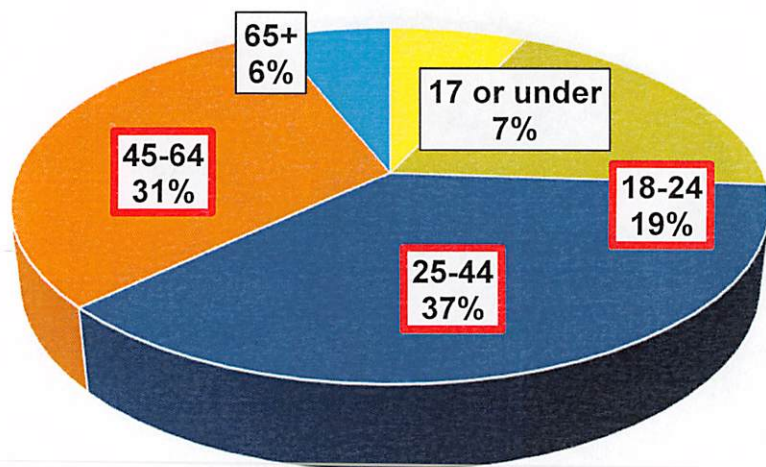
- Metro conducted an On-board Rider Survey in 2018
- Conducted by third-party market research provider, WYZERR
- 4,621 responses

Reinventing METRO\*

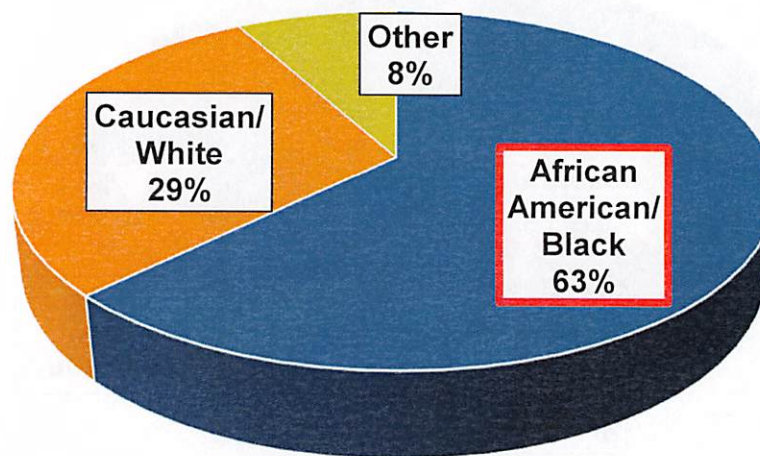


# Who are our riders?

## AGE

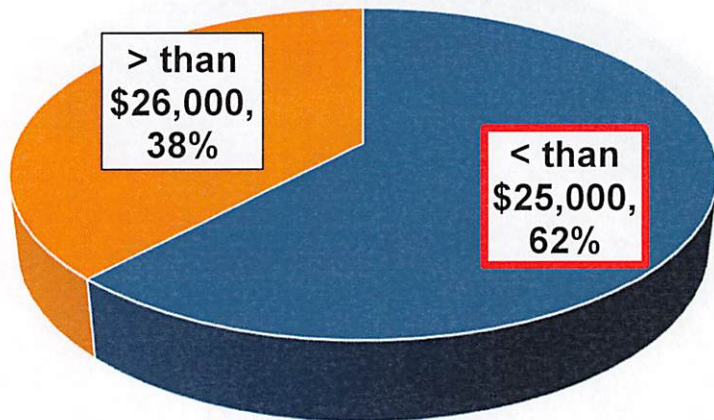


## RACE

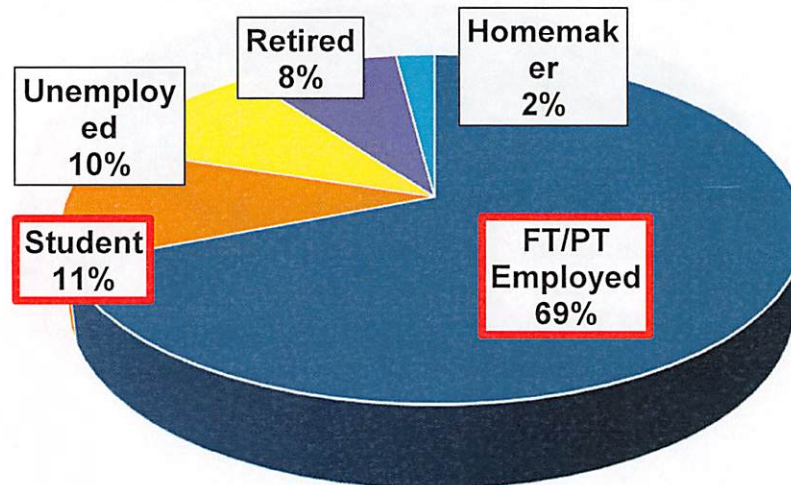


## Who are our riders?

### HOUSEHOLD INCOME



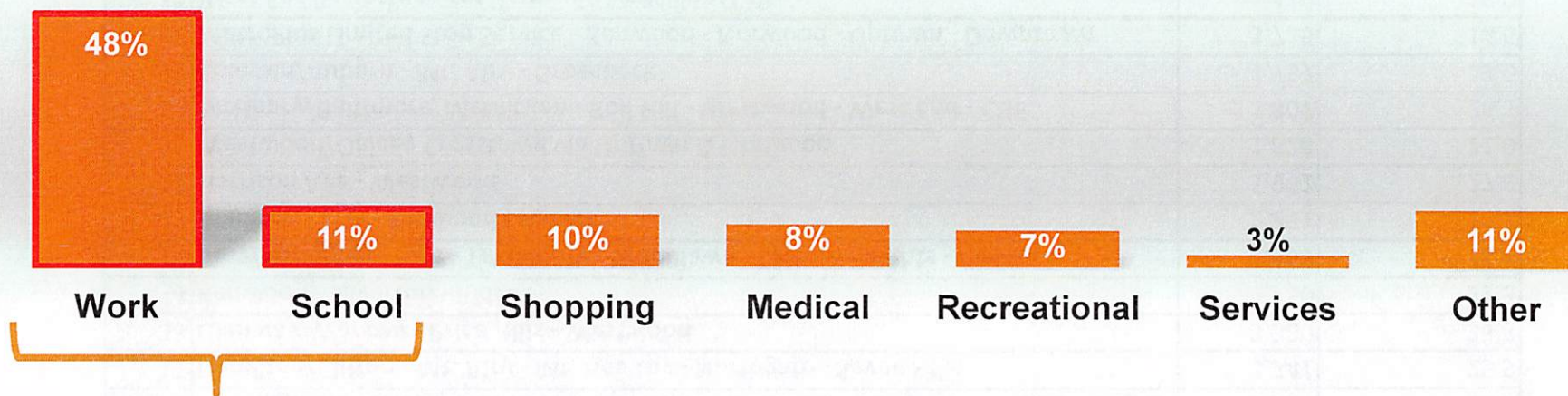
### EMPLOYMENT STATUS





## Who are our riders?

### WHAT'S THE PURPOSE OF THEIR RIDE



to/from work & school = 59%

Reinventing METRO\*



## Top ridership routes

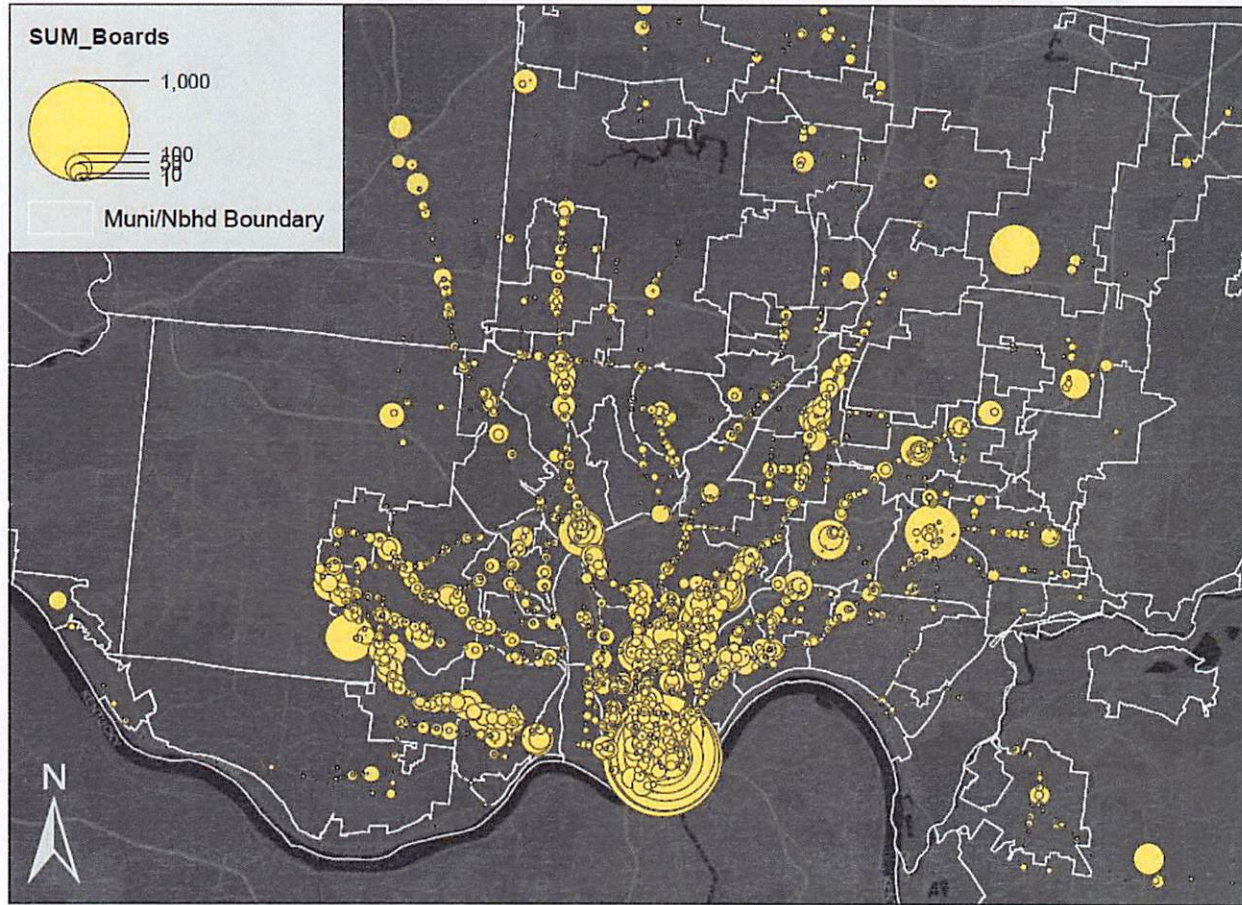
Route	Route End of Line	Avg Daily Boardings	Boardings Per Revenue Hour
43	Reading Rd/Paddock/W. Mitchel - Lockland - Evendale - Bond Hill - Winton Terrace	5,294	28.3
17	Hamilton/Clifton - Mt. Airy - Mt. Healthy - Northgate - Seven Hills	3,741	25.9
33	Glenway/Warsaw - Price Hills - Westwood	3,380	35.8
4	Kenwood - Silverton - Ridge	2,750	22.3
78	Vine/Springfield Pike - Tri-County - Woodlawn - Lincoln Heights - Paddock	2,263	21.8
11	Madison - Erie - Kenwood Layover	2,231	24.3
21	Harrison Ave - Westwood	1,962	27.8
51	Westwood/Oakley Crosstown via Uptown & Norwood	1,824	21.0
64	McHenry/Baltimore/McMicken - Roll Hill - Westwood - West End - CUF	1,807	26.1
19	Colerain/Auburn - Mt. Airy - Groesbeck	1,737	23.0
90	MetroPlus Limited Stop Service - Kenwood - Norwood - Uptown - Downtown	1,715	14.6
31	West End/Evanston Crosstown via McMillan/Taft	1,419	18.9
32	W. 8th/Delhi Pike - Saylor Park - Covedale - Price Hills	1,321	24.1
6	Queen City - Westwood	1,152	24.2
27	Beekman/Kirby - Northside - S. Cumminsville - West End	1,125	23.2
24	Linwood/Beechmont - Anderson - Mt. Washington via Uptown	1,119	16.6
46	Vine/Highland/Burnet - Corryville - Avondale - Zoo	1,084	19.6

Reinventing METRO





## Daily Boardings by Stop 2019

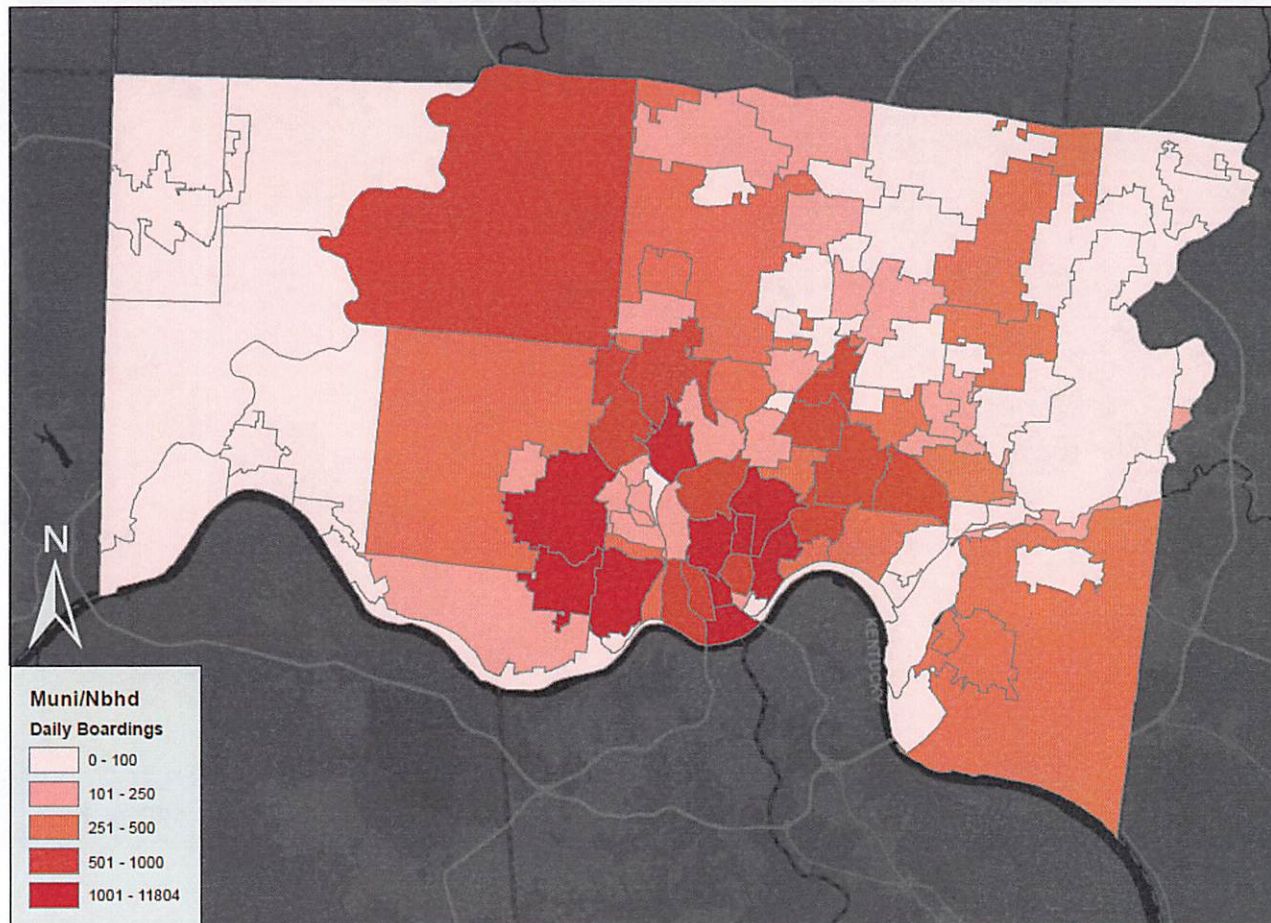


Service Layer Credits: Esri, HERE, Garmin, (c) OpenStreetMap contributors, and the GIS user community

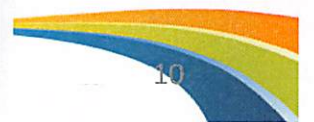




## Boardings by Municipality/Neighborhood 2019

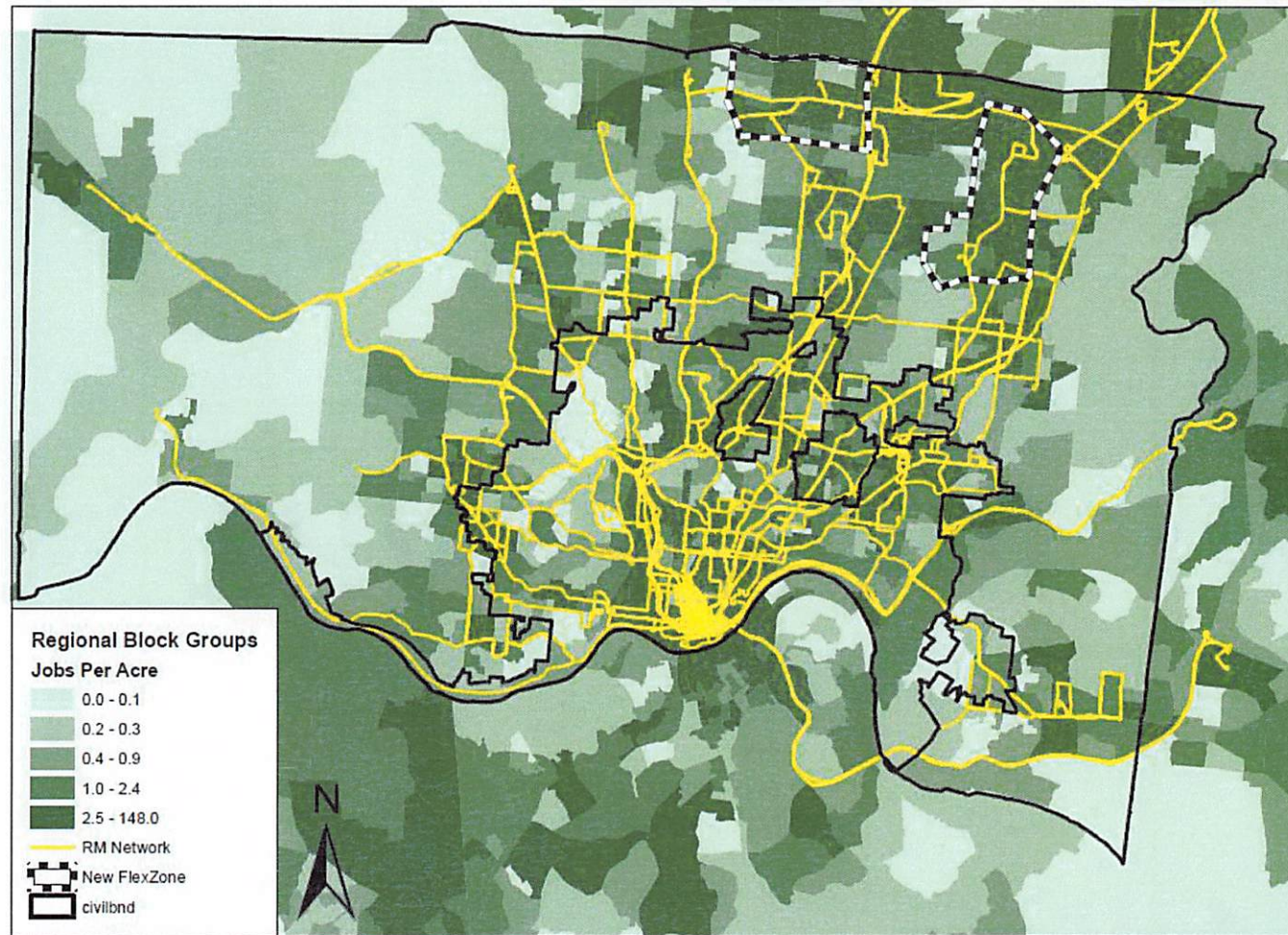


Service Layer Credits: Esri, HERE, Garmin, (c) OpenStreetMap contributors, and the GIS user community





## Jobs Per Acre with Reinventing Metro Network





# THANK YOU!

Reinventing METRO\*