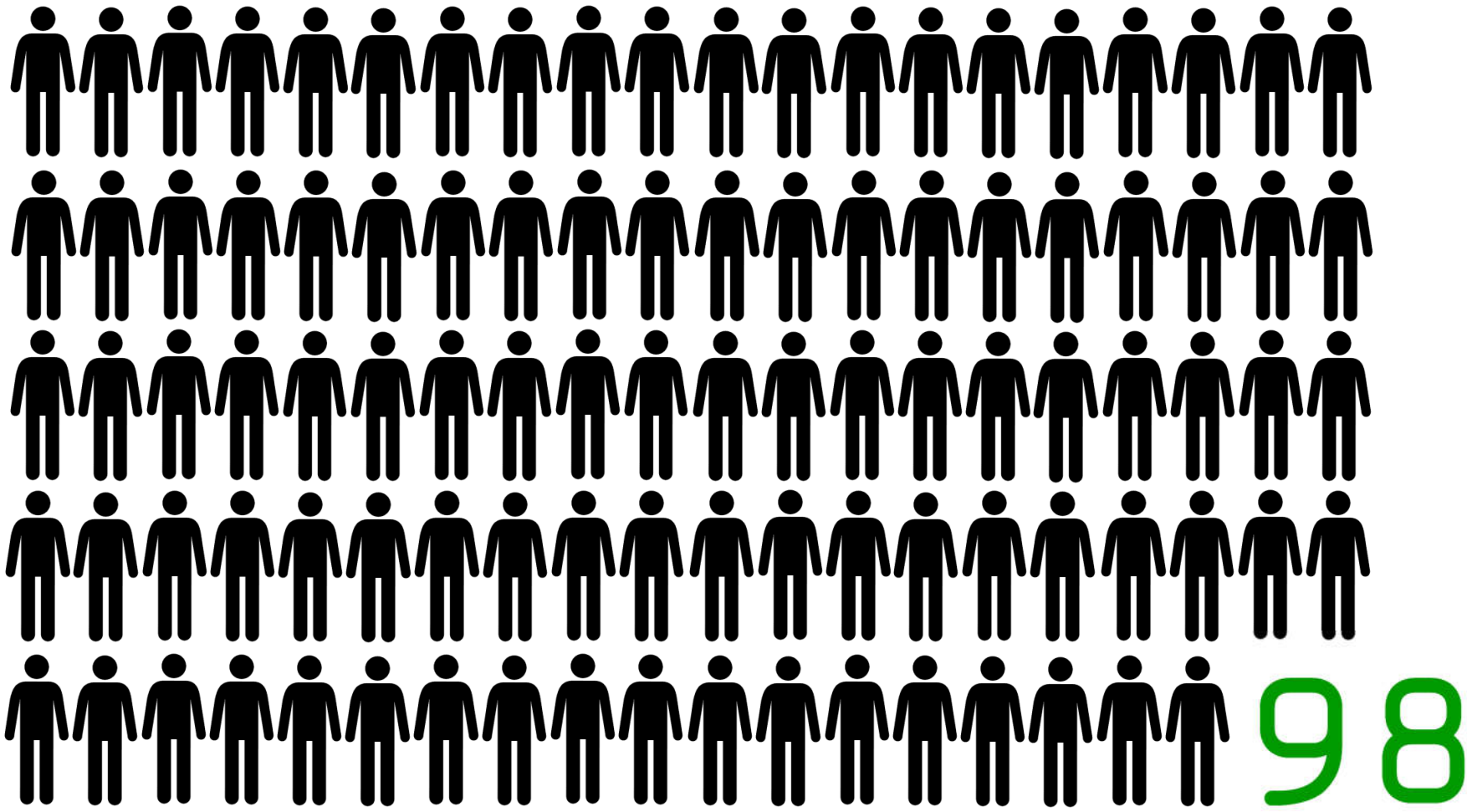




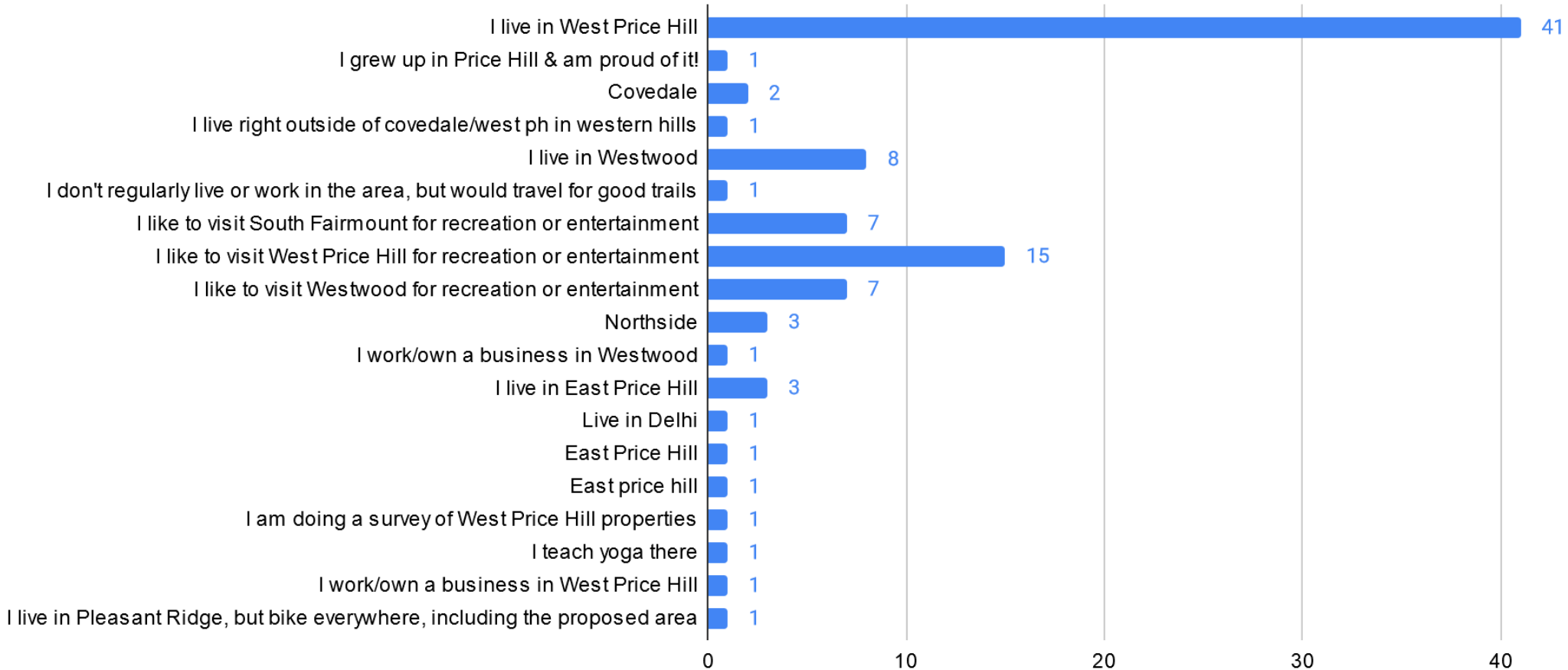
Dunham Recreation Center and Rapid Run Park Connections Summary Meeting

January 28, 2021

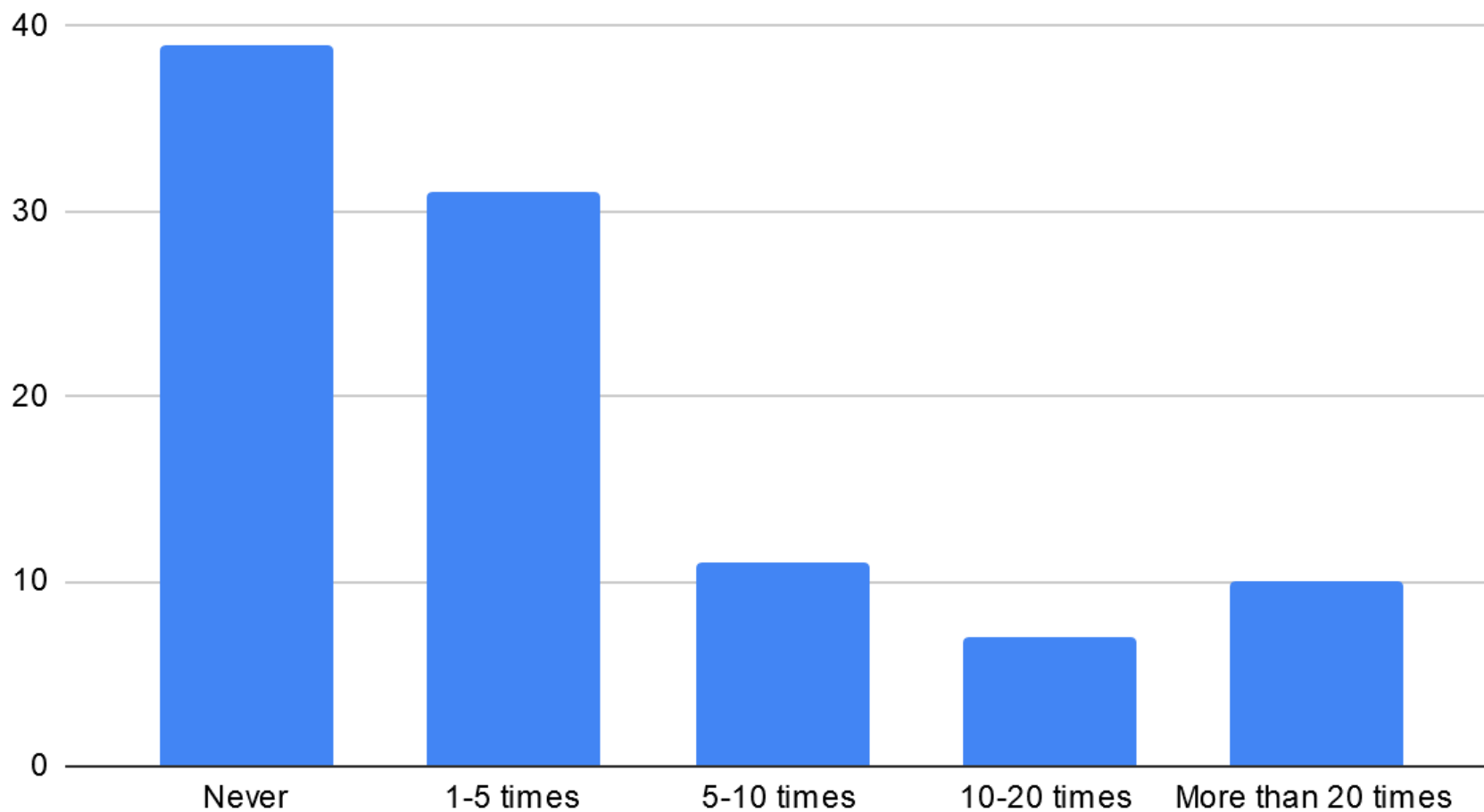
Survey responses – so far...



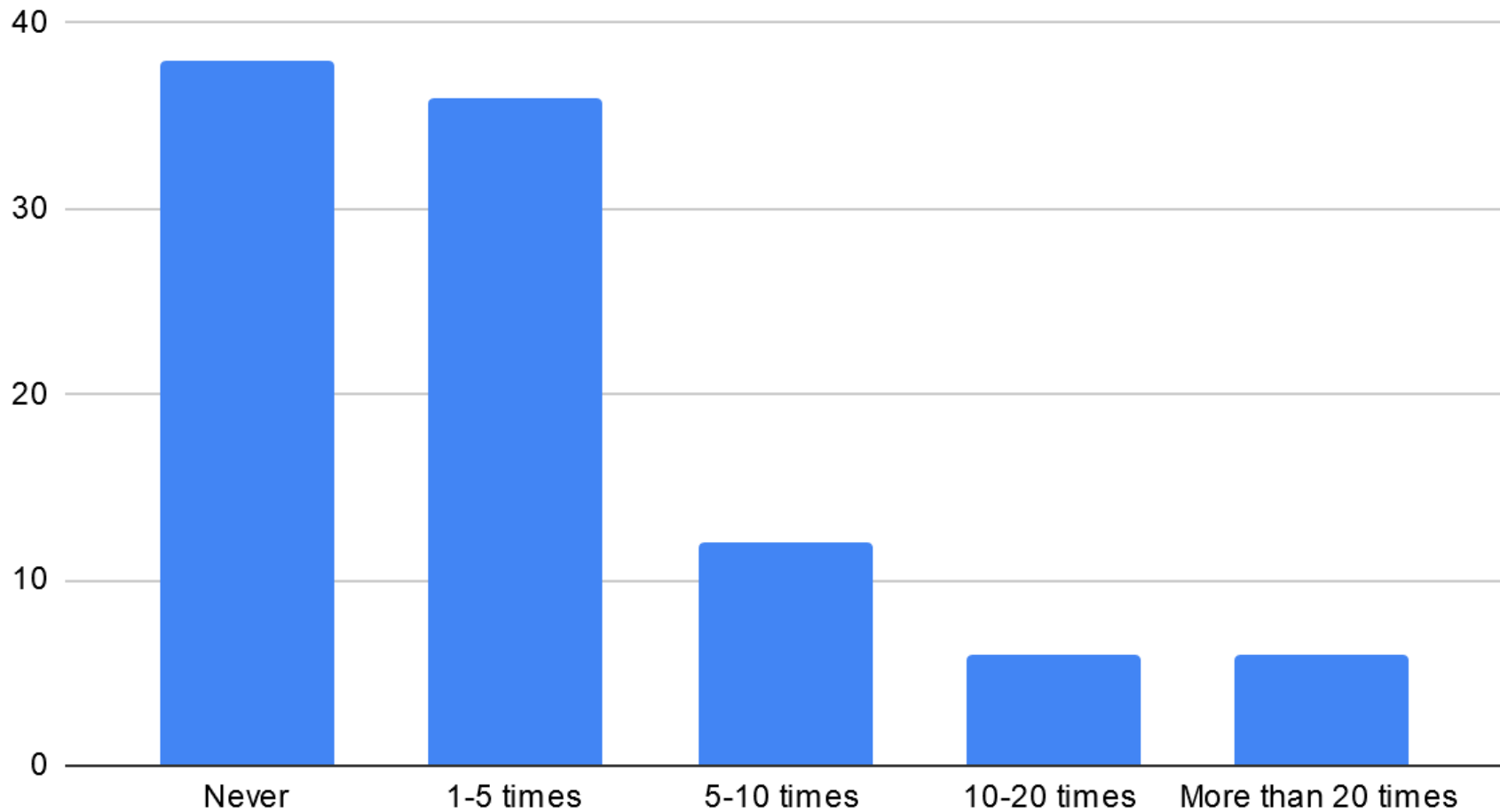
Which best describes you?



How often do you visit Dunham Recreation Center each year?



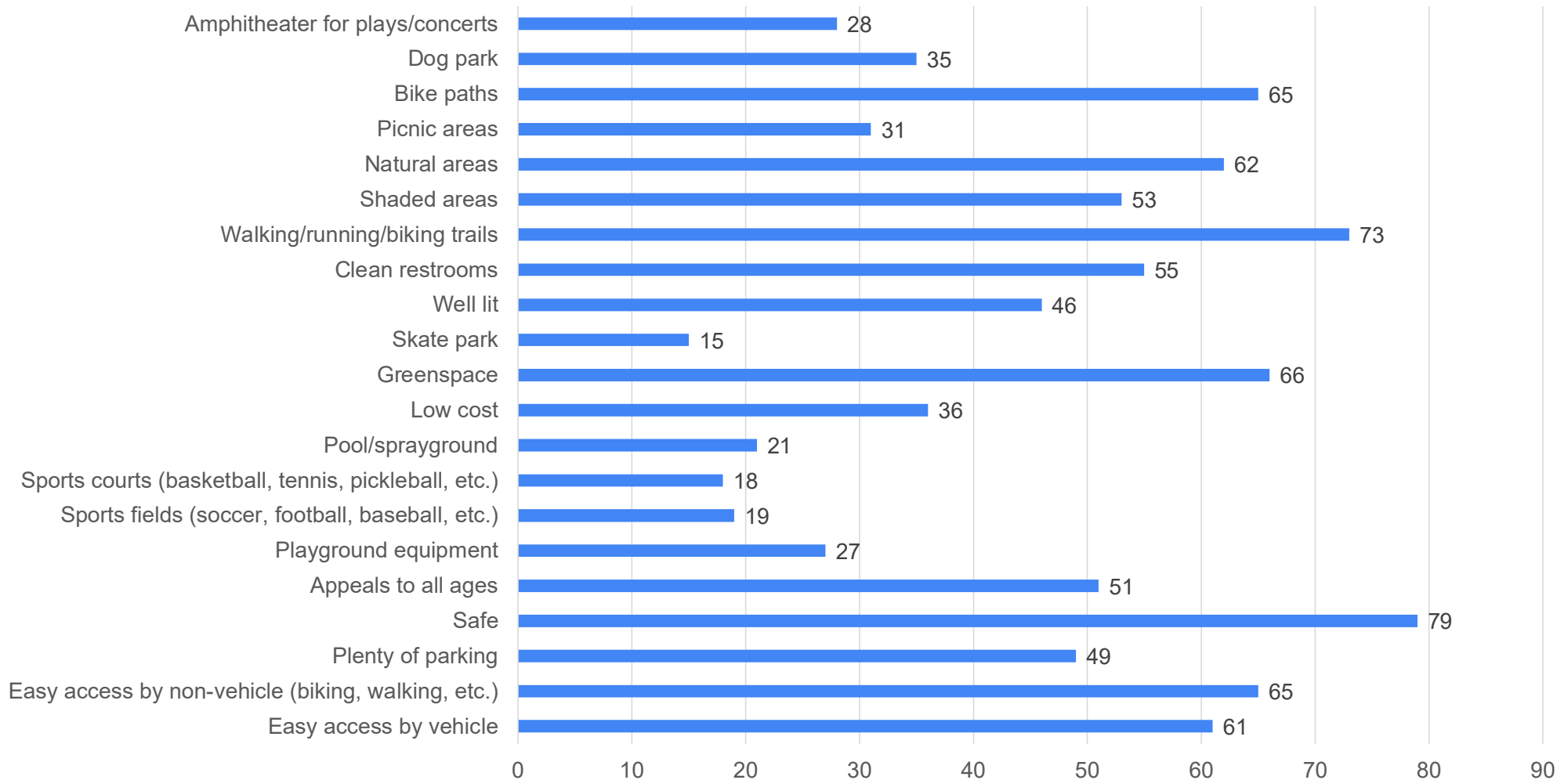
How often do you visit Rapid Run Park each year?



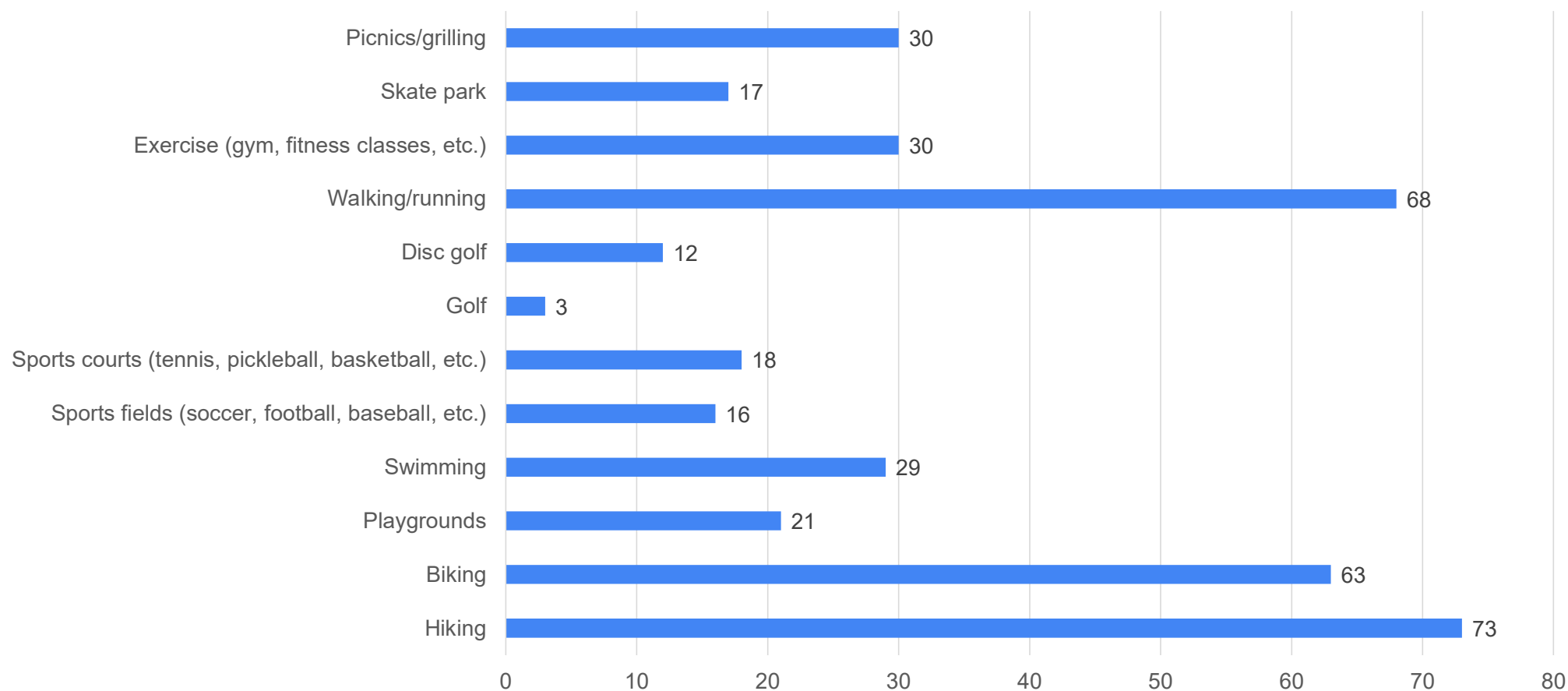
What makes a great recreation area?

A word cloud of terms related to recreation areas. The words are arranged in a roughly circular pattern and vary in size and color. The colors include shades of blue, green, yellow, orange, red, purple, and pink. The words are: sports, soccer, courts, basketball, natural, shaded, baseball, ages, football, access, safe, park, clean, tennis, well, easy, biking, trails, plenty, greenspace, areas, vehicle, plays, pool, paths, walking, bike, parking, fields, cost, running, appeals, restrooms, picnic, pickleball.

What makes a great recreation area?



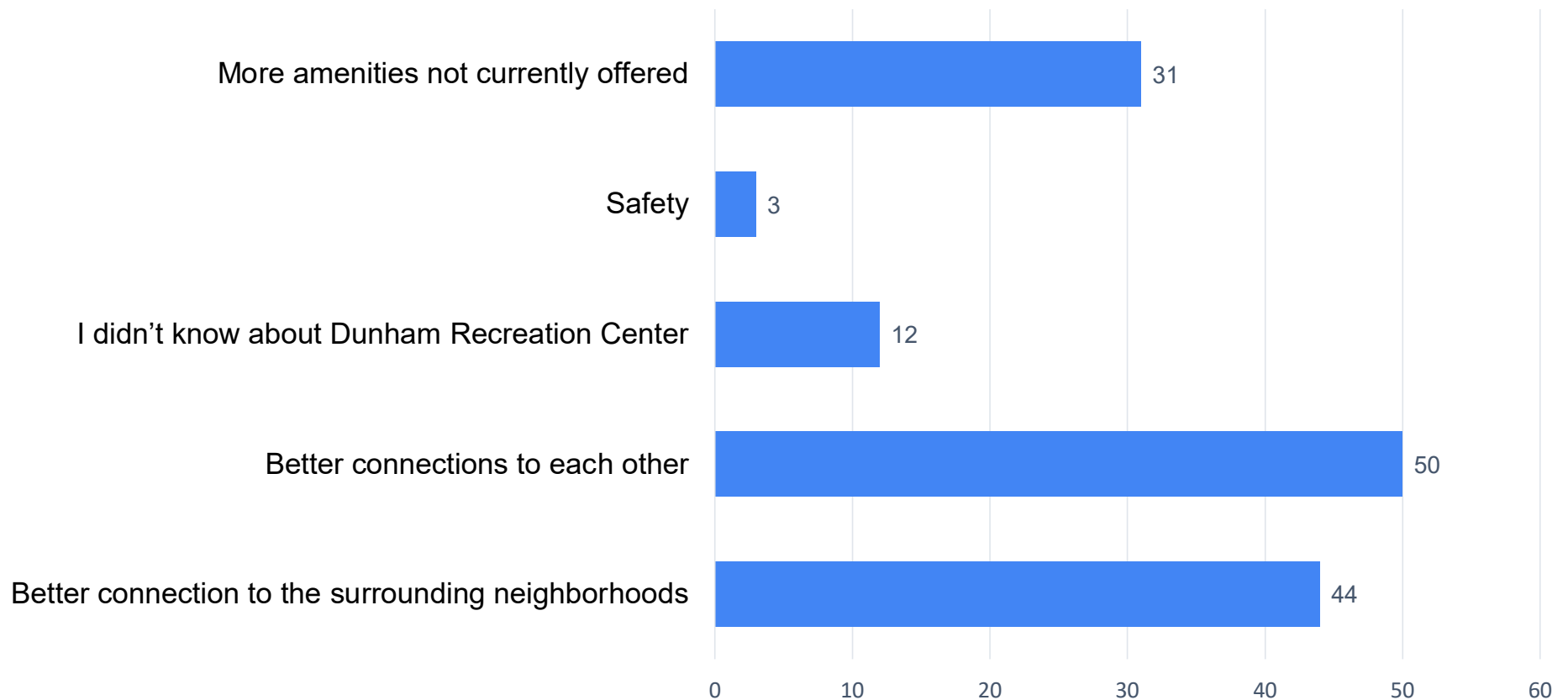
What are your favorite recreational activities?



Where do you recreate now?



What would increase your visits to Dunham Recreation Center and Rapid Run Park?



“Other” desired amenities mentioned in the survey

- “Paved walking and bike trails”
- “Mountain bike trails”
- “Safe passage over Glenway Avenue (Guerley Road?)”
- “Need parking on north side of Rapid Run Park, access off Guerley Road”
- “Stage for outdoor music/theatre performances”
- “Skate park and more arts available at the parks – festivals”
- “I would love a nature play scape for my kids”
- “Regularly scheduled things like food trucks, community theatre, book drop boxes, Safer walking trails, more community events like farmer’s markets and craft shows”

Interactive Mapping Activity Results

The first map was zoomed in to Rapid Run and Dunham. We asked the following questions:

1. What amenities/activities would make you visit these places more?
2. How can we better connect these two spaces to each other?

Interactive Mapping Activity Results

- Across the three meetings, we heard the following:
 - Better signage/wayfinding/marketing. Both locations that are easy to miss if you don't already know about them.
 - Connect to existing neighborhoods that are within walking/biking distance to the park though wayfinding or improved connections.
 - Lots of people have moved here recently due to the quality of housing stock with lower process who would be most likely to utilize these assets.
 - More hiking/walking trails to take advantage of the topography, including connecting Dunham and Rapid Run through trails through Potters Field if the owner of the apartment complex is willing to provide an access easement (see maps).

Interactive Mapping Activity Results

- Slow down traffic on roads around these areas. Someone referred to them as highways.
- Guerley Road entrance to Rapid Run is easy to miss – unmarked, narrow sidewalks, crosswalk but no signals. Some meeting attendees were avid bikers who won't bike on these roads.
- Entrance from Glenway Avenue small, unmarked, with uneven pavement – hard for stroller, wheelchair, etc.
- Partner with external organizations – Western Wildlife Corridor, Tri-State Trails, Go Vibrant, IMAGO, Enright Urban Eco Village, etc.
- Tennis courts, pump track, hosting cross country meets again

Interactive Mapping Activity Results

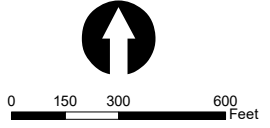
- Improve/enhance existing sidewalks and steps – expand existing sidewalk widths
- Dog park
- West Side farmer's/flea market
- Outdoor concerts/movie nights
- Better maintenance of pond
- Poor sidewalks and no parking for Rapid Run playground – long walk from parking and no safe place to cross Rapid Run Pike.

Dunham Recreation Area/Rapid Run Public Engagement Connecting To Each Other and the West Side



Legend

- Dunham Recreation Area
 - Rapid Run Park
 - Judah Touro Cemetery
 - Sidewalks
- Amenities**
- Bench
 - Play Equipment
 - Comfort Station
 - Disc Golf Center
 - Archery Range
 - Parking
 - Pavilion
 - Pool
 - Sand Volleyball Courts
 - Shelter
 - Shelter & Picnic
 - Recreation Centers
- Existing Multi-Use Trails**
- West Side Trail



Dunham Recreation Area/Rapid Run Public Engagement Connecting To Each Other and the West Side



Legend

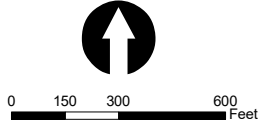
- Dunham Recreation Area
- Rapid Run Park
- Judah Touro Cemetery
- Sidewalks

Amenities

- Bench
- Play Equipment
- Comfort Station
- Disc Golf Center
- Archery Range
- Parking
- Pavilion
- Pool
- Sand Volleyball Courts
- Shelter
- Shelter & Picnic
- Recreation Centers

Existing Multi-Use Trails

- West Side Trail



Dunham Recreation Area/Rapid Run Public Engagement Connecting To Each Other and the West Side



Legend

- Dunham Recreation Area
- Rapid Run Park
- Judah Touro Cemetery
- Sidewalks

Amenities

- Bench
- Play Equipment
- Comfort Station
- Disc Golf Center
- Archery Range
- Parking
- Pavilion
- Pool
- Sand Volleyball Courts
- Shelter
- Shelter & Picnic
- Recreation Centers

Existing Multi-Use Trails

- West Side Trail

0 150 300 600 Feet

CINCINNATI
PARKS
Cincinnati Recreation Commission
city of CINCINNATI

Prepared by: Department of City Planning 9/22/2020

Interactive Mapping Activity Results

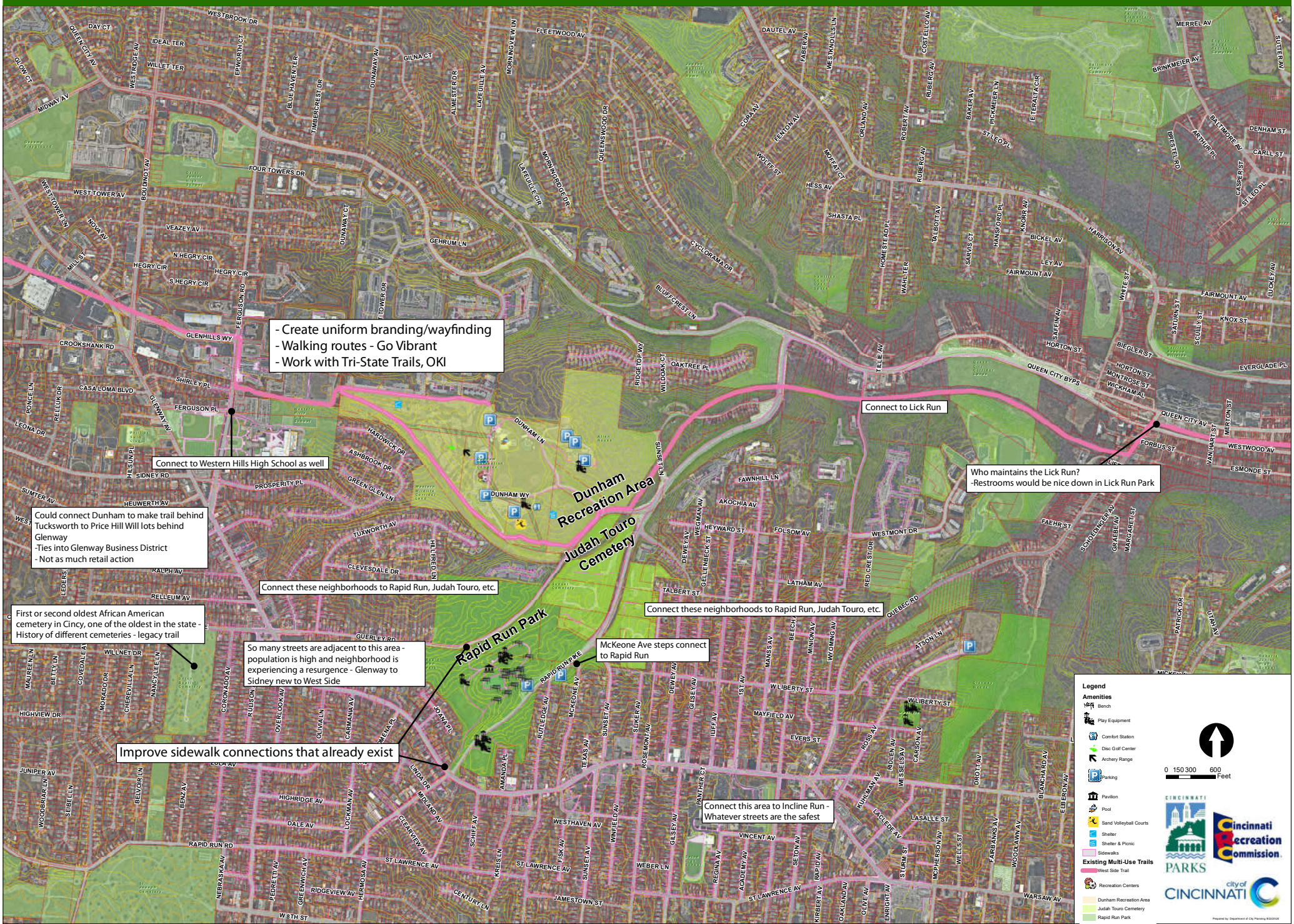
The second map was zoomed out to more of the West Side. We asked the following questions:

1. What connections should be a priority?
2. What other steps can City/neighborhood leaders to do increase awareness of these spaces (many of these ideas are shown in the zoomed in map)?

Interactive Mapping Activity Results

- Across the three meetings, we heard the following:
 - Permanent restrooms in Lick Run park
 - Connect to cemeteries
 - Make the proposed West Side railroad trail a priority
 - Connect to Oskamp Recreation Area
 - Create multi-use path along Rapid Run Pike to connect to Queen City Avenue
 - Create multi-use path along Sunset Avenue (no steps) to connect Glenway Avenue to Rapid Run Pike
 - Use Ferguson Road to connect to Westwood NBD
 - Look at old railroad right-of-way to connect into Green Township trail network

Dunham Recreation Area/Rapid Run Public Engagement Connecting To Each Other and the West Side



- Create uniform branding/wayfinding
 - Walking routes - Go Vibrant
 - Work with Tri-State Trails, OKI

Connect to Western Hills High School as well

Could connect Dunham to make trail behind Tucksworth to Price Hill Will lots behind Glenway
 -Ties into Glenway Business District
 - Not as much retail action

Connect these neighborhoods to Rapid Run, Judah Touro, etc.

First or second oldest African American cemetery in Cincy, one of the oldest in the state - History of different cemeteries - legacy trail

So many streets are adjacent to this area - population is high and neighborhood is experiencing a resurgence - Glenway to Sidney new to West Side

Improve sidewalk connections that already exist

McKeone Ave steps connect to Rapid Run

Connect these neighborhoods to Rapid Run, Judah Touro, etc.

Connect to Lick Run

Who maintains the Lick Run?
 -Restrooms would be nice down in Lick Run Park

Connect this area to Incline Run - Whatever streets are the safest

Legend

Amenities

- Bench
- Play Equipment
- Commut Station
- Disc Golf Center
- Archery Range
- Parking
- Pavilion
- Pool
- Sand Volleyball Courts
- Shelter
- Shelter & Picnic
- Sidewalks

Existing Multi-Use Trails

- West Side Trail

Recreation Centers

- Dunham Recreation Area
- Judah Touro Cemetery
- Rapid Run Park

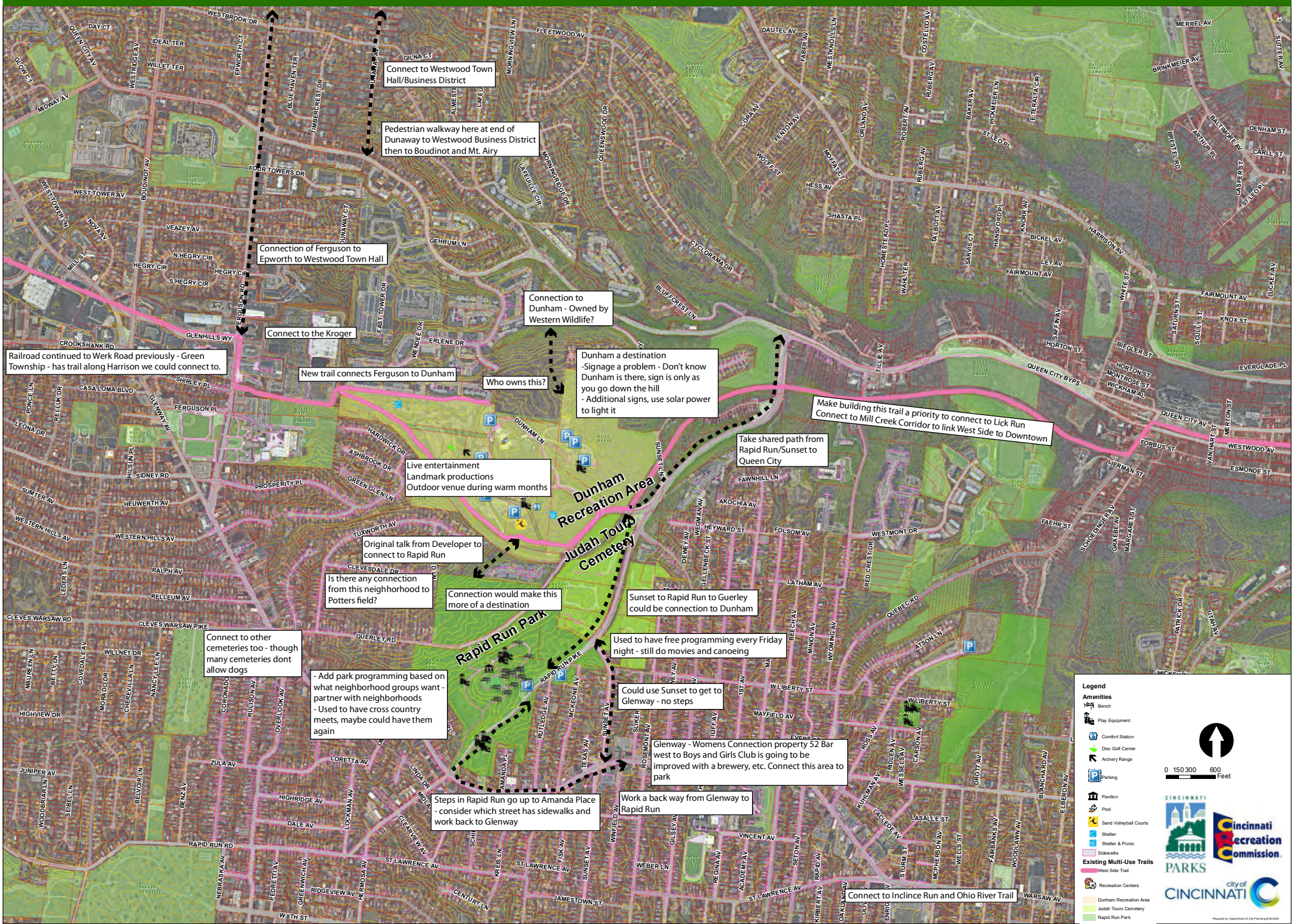
0 150 300 600 Feet

Cincinnati Recreation Commission

City of Cincinnati

Prepared by: Department of City Planning 03/2022

Dunham Recreation Area/Rapid Run Public Engagement Connecting To Each Other and the West Side



Railroad continued to Werk Road previously - Green Township - has trail along Harrison we could connect to.

Connection of Ferguson to Epworth to Westwood Town Hall

Connect to Westwood Town Hall/Business District

Pedestrian walkway here at end of Dunway to Westwood Business District then to Boudinot and Mt. Airy

Connect to the Kroger

New trail connects Ferguson to Dunham

Connection to Dunham - Owned by Western Wildlife?

Dunham a destination
- Signage a problem - Don't know Dunham is there, sign is only as you go down the hill
- Additional signs, use solar power to light it

Make building this trail a priority to connect to Lick Run
Connect to Mill Creek Corridor to link West Side to Downtown

Take shared path from Rapid Run/Sunset to Queen City

Live entertainment
Landmark productions
Outdoor venue during warm months

Dunham Recreation Area
Judah Tours Cemetery

Original talk from Developer to connect to Rapid Run

Is there any connection from this neighborhood to Potters field?

Connection would make this more of a destination

Sunset to Rapid Run to Guerley could be connection to Dunham

Connect to other cemeteries too - though many cemeteries dont allow dogs

- Add park programming based on what neighborhood groups want - partner with neighborhoods
- Used to have cross country meets, maybe could have them again

Used to have free programming every Friday night - still do movies and canoeing

Could use Sunset to get to Glenway - no steps

Glenway - Womens Connection property 52 Bar west to Boys and Girls Club is going to be improved with a brewery, etc. Connect this area to park

Steps in Rapid Run go up to Amanda Place consider which street has sidewalks and work back to Glenway

Work a back way from Glenway to Rapid Run

Connect to Incline Run and Ohio River Trail

Legend

Amenities

- Bench
- Play Equipment
- Commut Station
- Disc Golf Center
- Archery Range
- Parking
- Pavilion
- Pool
- Sand Volleyball Courts
- Shelter
- Shelter & Picnic
- Sidewalks

Existing Multi-Use Trails

- West Side Trail

Recreation Centers

- Dunham Recreation Area
- Judah Tours Cemetery
- Rapid Run Park

0 150 300 600 Feet

Cincinnati Recreation Commission
Cincinnati Parks
City of Cincinnati

Dunham Recreation Area/Rapid Run Public Engagement Connecting To Each Other and the West Side



Connect to Oskamp

Connect to Queen City Avenue

Connect Sunset to connect Rapid Run with Glenway Avenue/Business District

Western Hills Viaduct/Lick Run will have must wider sidewalks to connect to this area.

Legend

Amenities

- Bench
- Play Equipment
- Comfort Station
- Disc Golf Center
- Archery Range
- Parking
- Pavilion
- Pool
- Sand Volleyball Courts
- Shelter
- Shelter & Picnic
- Sidewalks

Existing Multi-Use Trails

- West Side Trail

Recreation Centers

- Dunham Recreation Area
- Judah Touro Cemetery
- Rapid Run Park

0 150 300 600 Feet

Cincinnati Recreation Commission
CINCINNATI PARKS
City of CINCINNATI

Thank you and next steps

- Thank you for taking the time to give us your feedback. This information has been shared with the Park Board, Cincinnati Recreation Commission, Transportation & Engineering – all who have been involved and attended these meetings.
- If you think of additional input after the meeting, please email James Weaver (james.weaver@cincinnati-oh.gov) or Andy Juengling (andy.juengling@cincinnati-oh.gov)
- Stay up to date on our website:
 - <http://www.cincinnati-oh.gov/rapidrundunhamconnection>