

**Strategic Partnerships**

# for Greener Schools

**KIRSTEN  
BRADEMEYER**  
KEEP CINCINNATI  
BEAUTIFUL

**CHRIS  
BURKHARDT**  
CINCINNATI  
PUBLIC SCHOOLS

**CYNTHIA  
WALTERS**  
GREEN  
UMBRELLA

**TY  
WESSELKAMPER**  
KEEP CINCINNATI  
BEAUTIFUL





# Agenda

INTRODUCTION

UPDATES FROM CPS

HISTORY OF GREEN SCHOOLYARDS

STRATEGIC PARTNERSHIPS FOR GREENER SCHOOLS

SAFE & CLEAN AND CITY SUPPORT

# Chris Burkhardt

**CHIEF OPERATING OFFICER  
CINCINNATI PUBLIC SCHOOLS**

**CPS'S STRATEGIC VISION  
FOR GREENER SCHOOLS**



# CPS Priorities

## MOWING

- REDUCE MOWED AREAS
- USE SUSTAINABLE EQUIPMENT
- PRACTICE "CONSERVATION MOWING"
- CURTAIL WEEDS:

## NATURAL BOUNDARIES

- NATURAL FENCE LINES
- NATURAL NOISE DEADENING

## WATER CONSERVATION

- INSTALL WATER-WISE IRRIGATION
- INCORPORATE DROUGHT-TOLERANT PLANTS
- HARVEST RAINWATER
- MANAGE STORMWATER
- MULCHING
- SUSTAINABLE MULCHING

## OUTDOOR LEARNING & PLAY

- OUTDOOR CLASSROOMS
- SCHOOL GARDENS
- PLAYGROUNDS
- WALKING TRAILS
- CONNECTING SCHOOL CAMPUSES

## TREE CARE

- IDENTIFY TREES/SHRUBS
- PLANT APPROPRIATE TREES/SHRUBS
- ESTABLISH A TREE CARE PLAN

## INTERNSHIPS

- ENGAGE STUDENTS IN PAID MAINTENANCE

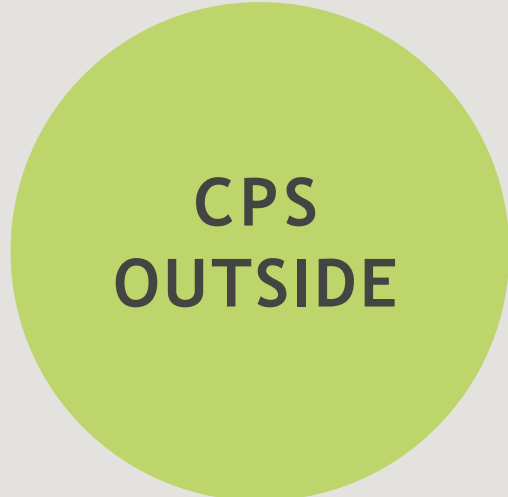
# 2023 Green Cincinnati Plan Education Goals

**1** 100% OF PUBLIC SCHOOLS HAVE SAFE AND ACCESSIBLE OUTDOOR LEARNING SPACES BY 2028.

**2** 4,000 INDIVIDUALS TRAINED FOR GREEN ECONOMY JOBS BY 2028 (800/YEAR).



# Green Schoolyards Timeline



CPS  
OUTSIDE

**2017**



CHILDREN IN  
NATURE  
NETWORK

**2022**



GREEN  
SCHOOLYARDS  
ACTION  
NETWORK

**2023**



20 CPS GREEN  
SHOOLYARD  
IMPROVEMENTS

**2022-24**



1ST GREEN  
SCHOOLYARDS  
SUMMIT

**2024**



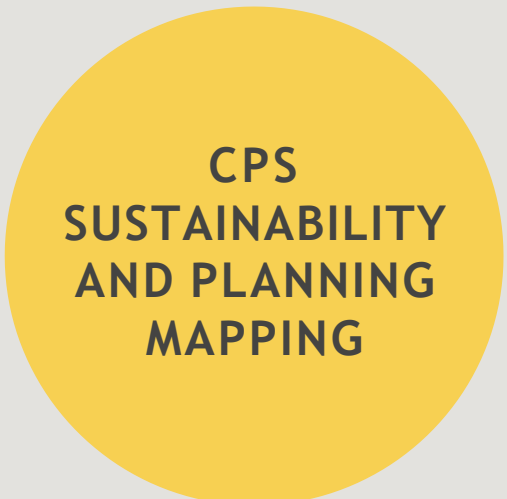
CHILDREN'S  
OUTDOOR  
BILL OF  
RIGHTS

**2024**



STRATEGIC  
PARTNERSHIPS  
FOR GREENER  
SCHOOLS

**2025**



CPS  
SUSTAINABILITY  
AND PLANNING  
MAPPING

**2025**



GREEN AND  
HEALTHY  
SCHOOLS

**2025**



RIPPLE  
EFFECT  
MAPPING

**2025**

# Partners in the Green SchoolyardsSpace

BRICK GARDENS

CARDINAL LAND CONSERVANCY

CINCINNATI HEALTH DEPARTMENT

CINCINNATI OES

CINCINNATI PARKS

CINCINNATI PUBLIC SCHOOLS

CINCINNATI RECREATION COMMISSION

CINCINNATI ZOO

CIVIC GARDEN CENTER

CLC INSTITUTE

GREEN UMBRELLA

GROUNDWORK OHIO RIVER VALLEY

HAMILTON COUNTY CONSERVATION DISTRICT

IMAGO

ISAIAH 55 INC

KEEP CINCINNATI BEAUTIFUL

OSU EXTENSION

REDS COMMUNITY FUND

SPRING GROVE

TAKING ROOT

THE BEING PROJECT

UC FIELD OFFICE

# Strategic Partnerships for Greener Schools

ALL CPS STUDENTS HAVE SAFE ACCESS TO AN OUTDOOR LEARNING SPACE

PARTNER RESOURCE-SHARING TO HELP FACILITATE MAINTAINING GREENSPACE ON SCHOOL CAMPUSES

EMBED WORK-BASED LEARNING AND INTERNSHIPS DEDICATED TO MAINTAINING GREENSPACE ON SCHOOL CAMPUSES



# STRATEGIC PARTNERSHIPS FOR GREENER SCHOOLS

GREEN WORKFORCE  
DEVELOPMENT

CPS SUMMER  
INTERNS

DISTRICT  
WELLNESS

FOOD & NUTRITION  
CURRICULUM

GREEN ASSETS  
MAPPING

TREE PLANTING,  
CARE, AND MAPPING

# All CPS students have safe access to an outdoor learning space

PARTNERS WORK COLLABORATIVELY WITH CPS TO EXPAND AND IMPROVE SCHOOLYARD GREENSPACES SO THAT STUDENTS CAN LEARN, PLAY, AND EXPLORE OUTDOORS.

## KEY FOCUS AREAS

- GREENING SCHOOLYARDS AND UNDERUTILIZED CAMPUS SPACES
- DESIGNING SPACES FOR BOTH RECREATION AND LEARNING
- IMPROVING SAFETY, ACCESSIBILITY, AND SUPERVISION
- SUPPORTING EDUCATORS IN USING OUTDOOR SPACES FOR INSTRUCTION
- LONG-TERM STEWARDSHIP PLANS FOR EACH CAMPUS

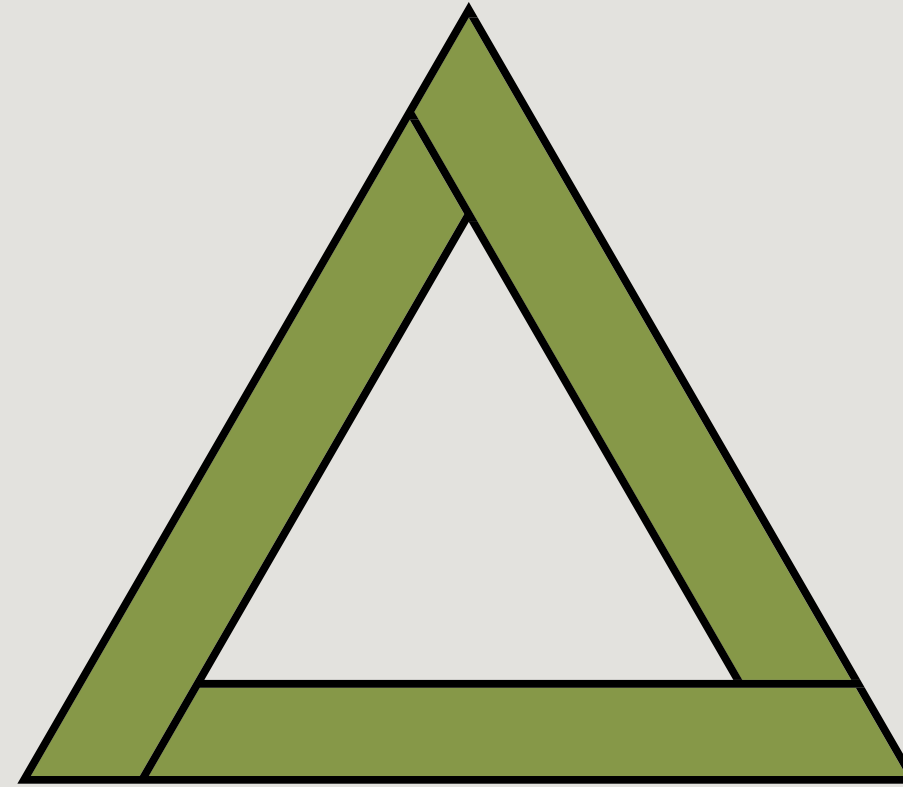


# Curriculum Instruction and Professional Development

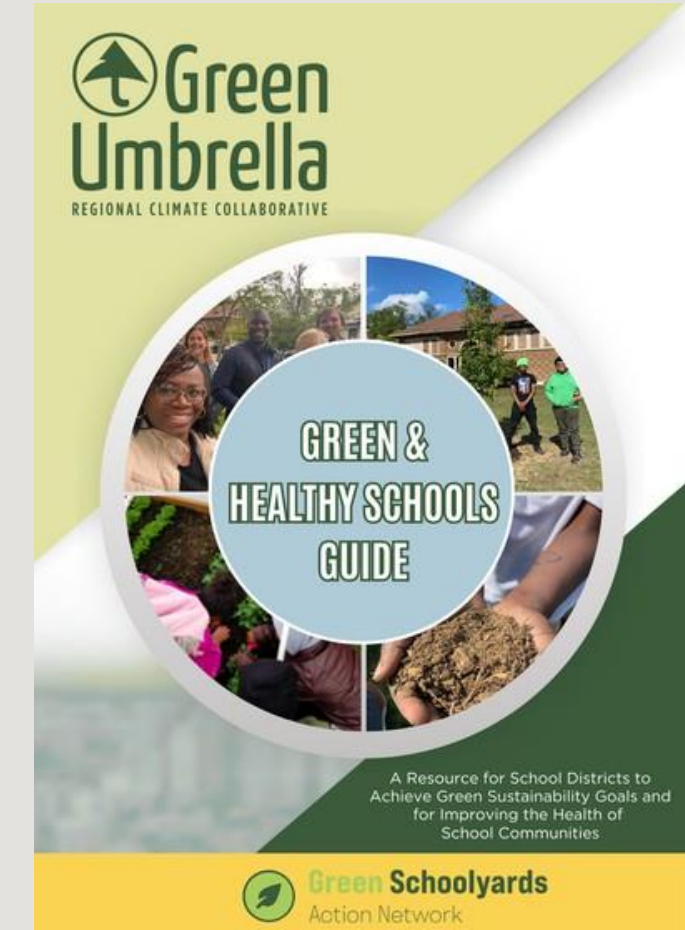
**AGRICULTURE & ENVIRONMENTAL SYSTEMS**

AIKEN NEW TECH  
CLARK MONTESSORI  
GAMBLE MONTESSORI  
ZOO ACADEMY

**Career Technical Education (CTE)**



**Outdoor Maintenance**





## **GREENSPACE**

**trees, foliage,  
orchard, pollinator  
garden, trail, forest,  
water feature**



## **SCHOOL CAMPUS**

**parking lot,  
playground, sports  
facilities, indoor  
structures**



## **OUTDOOR LEARNING**

**food garden,  
greenhouse,  
naturescape, seating  
and shade structures**

# Partner resource-sharing to help facilitate maintaining greenspace on school campuses

PARTNERS COLLABORATE TO ALIGN TOOLS, TRAINING, FUNDING, AND VOLUNTEER CAPACITY SO THAT GREENSPACES ON SCHOOL CAMPUSES REMAIN HEALTHY AND FUNCTIONAL.

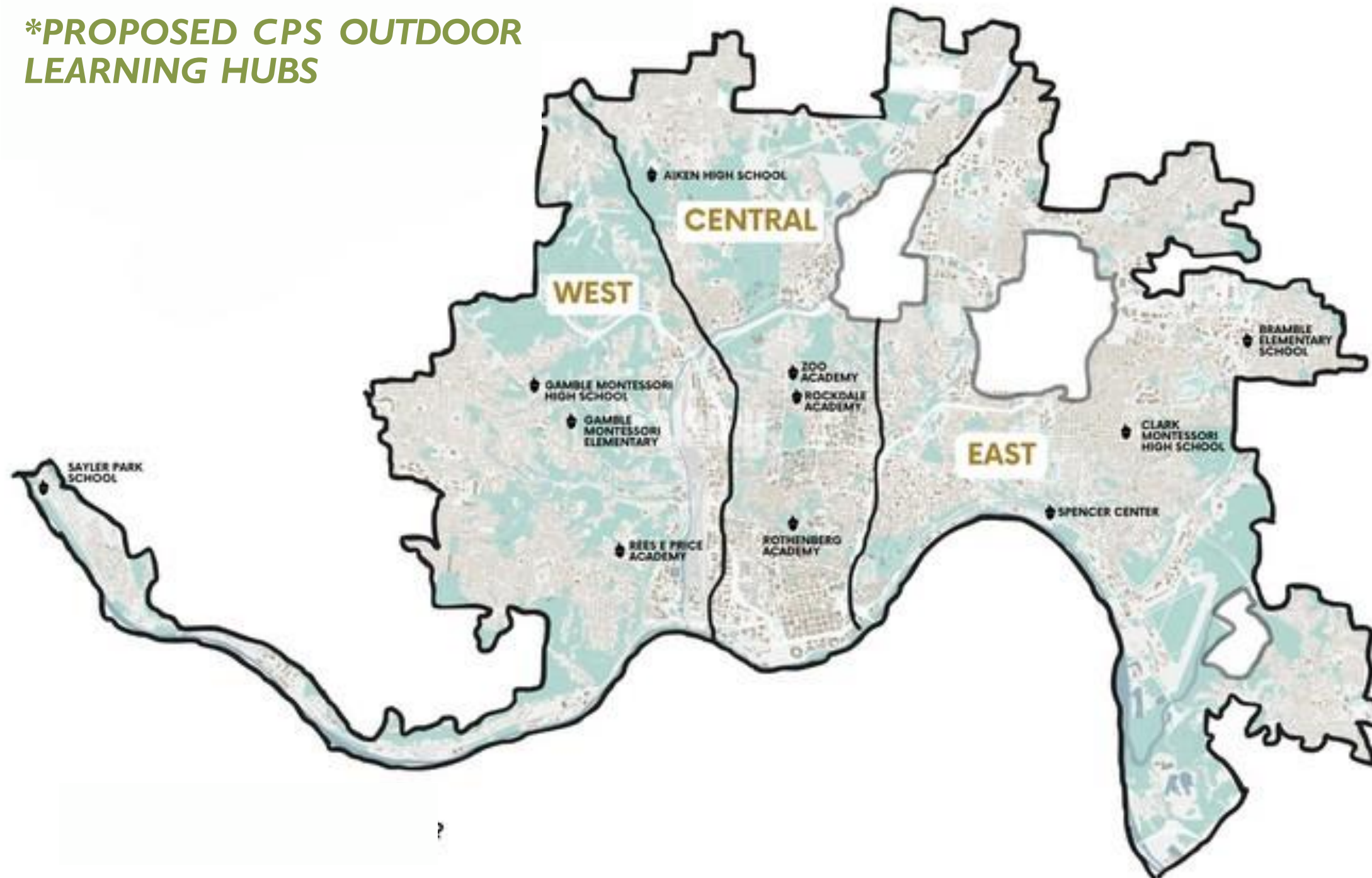
## KEY FOCUS AREAS

- SHARED TOOLS, MATERIALS, AND MAINTENANCE RESOURCES
- PARTNER COORDINATION TO AVOID DUPLICATION OF EFFORTS
- TRAINING FOR SCHOOL STAFF, VOLUNTEERS, AND STUDENTS
- ALIGNMENT OF FUNDRAISING STRATEGIES TO SUPPORT INSTALLATION AND LONG-TERM MAINTENANCE OF GREENSPACES



# Outdoor Learning Access at CPS

**\*PROPOSED CPS OUTDOOR LEARNING HUBS**



CURRENTLY, STUDENTS AT 60 CPS SCHOOLS HAVE SOME SORT OF ACCESS TO OUTDOOR LEARNING. THIS INCLUDES UNDER 10 MINUTE WALKS TO PARKS. IT DOES NOT MEAN THAT 60 CPS SCHOOLS HAVE SOME SORT OF OUTDOOR LEARNING FEATURE.

# RIPPLE Effect

OF CINCINNATI'S  
GREEN SCHOOLYARDS  
ACTION NETWORK

## CHALLENGES & BARRIERS



## PARTNERSHIPS & COLLABORATION



## AGRICULTURE PROGRAMS



## YOUTH LEADERSHIP & JUSTICE



## GRASS ROOT EFFORTS

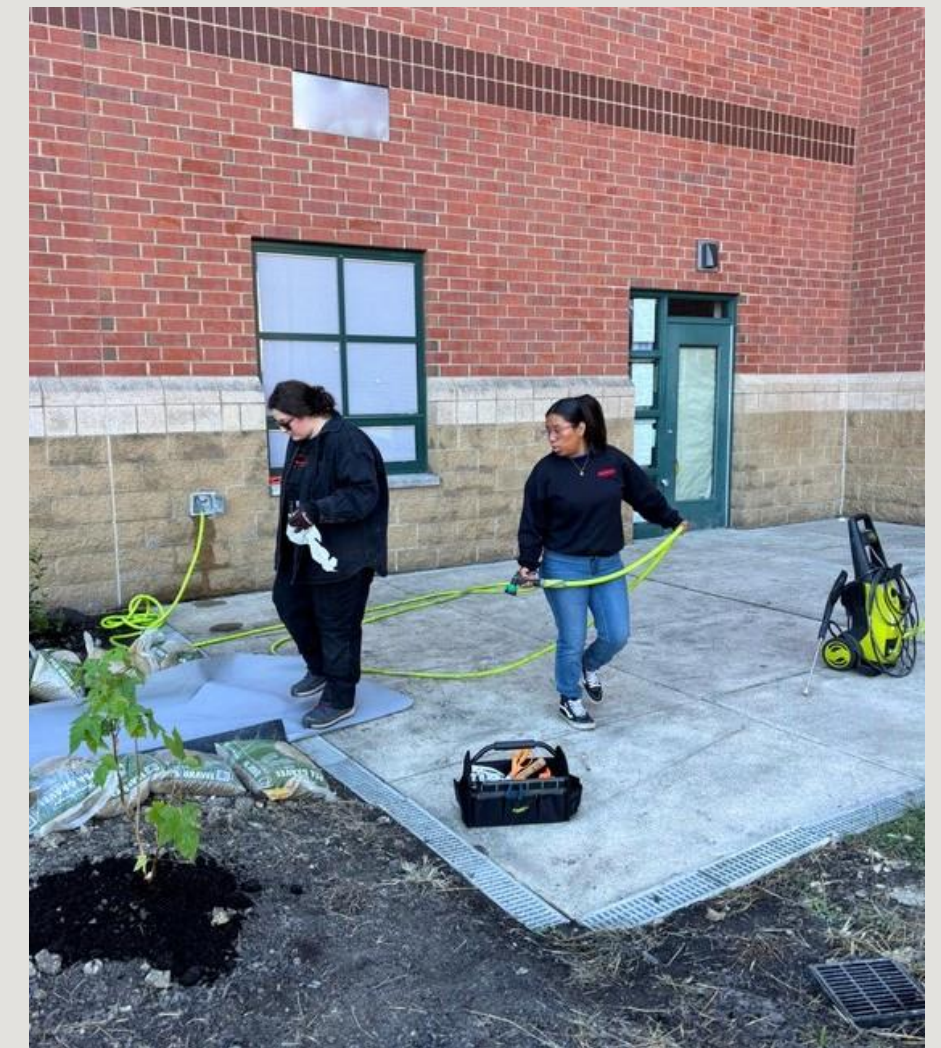


# Embed work-based learning and internships dedicated to maintaining greenspace on school campuses

PARTNERS COLLABORATE WITH CPS TO EMBED WORK-BASED LEARNING, INTERNSHIPS, AND YOUTH EMPLOYMENT OPPORTUNITIES RELATED TO GREENSPACE MAINTENANCE, ENVIRONMENTAL STEWARDSHIP, AND URBAN ECOLOGY.

## KEY FOCUS AREAS

- STUDENT INTERNSHIPS AND PAID WORK OPPORTUNITIES
- INTEGRATION WITH CAREER PATHWAYS
- SCHOOL-BASED EXPERIENTIAL LEARNING
- MENTORSHIP AND WORKFORCE SKILL DEVELOPMENT





# City Investment in Greener Schools Through Safe & Clean

**\$224,703 INVESTED IN CPS GREENSPACE AND ENVIRONMENTAL PROJECTS ACROSS 10 FUNDED PROJECTS AT 13 CPS CAMPUSES**



Participants in Price Hill Safety CAT (Safe & Clean) paint a mural for The Being Project's (Safe & Clean, Seeds of Change) "Kindness Corner" at Rees E Price Academy

# Gamble Montessori Elementary

## THE FOREST TRAIL INITIATIVE: ENVISIONING A COMMUNITY CONNECTION WITH NATURE

Imagine a space where the community can engage with nature, learn collaboratively, and thrive—physically, emotionally, and socially. The Forest Trail will protect natural habitats, establish accessible pathways, and offer opportunities for outdoor education, family involvement, and conservation efforts. The Forest Trail will act as a vital link for our community, creating safe, walkable routes that enable students and families to confidently walk or bike to school.

*Asia Sheanshang,  
Gamble Montessori Resource Coordinator*

**\$19,470 in S&C funding**

### EXISTING PARTNERS

Keep Cincinnati Beautiful, Cardinal Land Conservancy, Gamble High School, Imago Westwood Works, Spring Grove Cemetery, Rotary Club, Green Umbrella, GME PTO, CRC, Local volunteers and community groups



# Green Schoolyards as Public Land

**66 SCHOOLS | 35,000 STUDENTS | 900+ ACRES OF LAND**

CPS CAMPUSES REPRESENT ONE OF CINCINNATI'S LARGEST PORTFOLIOS OF PUBLIC LAND AND AN OPPORTUNITY TO EXPAND CLIMATE INFRASTRUCTURE AND OUTDOOR LEARNING ACROSS THE CITY.

## WHY THIS MATTERS FOR CINCINNATI

- **CLIMATE RESILIENCE**
  - TREES AND GREENSPACE HELP REDUCE URBAN HEAT AND MANAGE STORMWATER.
- **NEIGHBORHOOD ACCESS TO NATURE**
  - SCHOOLYARDS ARE OFTEN THE MOST ACCESSIBLE GREENSPACE IN MANY NEIGHBORHOODS.
- **STUDENT LEARNING & HEALTH**
  - OUTDOOR SPACES SUPPORT ENVIRONMENTAL EDUCATION AND STUDENT WELLBEING.
- **YOUTH WORKFORCE PATHWAYS**
  - GREENSPACE STEWARDSHIP CONNECTS STUDENTS TO CAREERS IN ENVIRONMENTAL AND GREEN INFRASTRUCTURE FIELDS.

**BIGGEST CHALLENGE:** MORE THAN 30 ORGANIZATIONS ARE WORKING IN THIS SPACE, BUT COORDINATION ACROSS PARTNERS, CPS, AND THE CITY IS LIMITED TO PARTIAL SUPPORT FROM GREEN UMBRELLA AND KCB STAFF (CYNTHIA AND KIRSTEN)

# Strategic Partnerships for Greener Schools Liaison

## A DEDICATED ROLE TO COORDINATE COLLABORATION BETWEEN:

- CINCINNATI PUBLIC SCHOOLS
- PARTNER ORGANIZATIONS
- CITY DEPARTMENTS

## KEY RESPONSIBILITIES

- ALIGN PARTNER RESOURCES AND PROGRAMMING ACROSS CPS CAMPUSES
- COORDINATE MAINTENANCE STRATEGIES FOR SCHOOL GREENSPACES
- ALIGN FUNDRAISING AND GRANT STRATEGIES
- SUPPORT WORK-BASED LEARNING AND INTERNSHIPS FOR STUDENTS
- MAXIMIZE IMPACT OF EXISTING CITY INVESTMENTS (INCLUDING SAFE & CLEAN)

## OUTCOME

*STRONGER PARTNERSHIPS, MORE EFFECTIVE USE OF PUBLIC LAND, AND GREATER IMPACT FOR CINCINNATI STUDENTS AND NEIGHBORHOODS.*