

VICINITY MAP
(Not to Scale)

CLOSURE

North: 407,313.244'	East: 1,396,331.301'	Segment# 14: Line	Course: N80°21'59"E	Length: 10.45'	North: 407,571.212'	East: 1,396,564.748'			
Segment# 1: Line	Course: N9°56'21"W	Length: 437.23'	North: 407,743.912'	East: 1,396,255.834'	Segment# 15: Line	Course: S9°56'21"E	Length: 30.00'	North: 407,541.662'	East: 1,396,569.926'
Segment# 2: Line	Course: S80°42'46"E	Length: 72.02'	North: 407,732.289'	East: 1,396,326.910'	Segment# 16: Line	Course: S80°22'19"W	Length: 191.48'	North: 407,509.637'	East: 1,396,381.143'
Segment# 3: Line	Course: S9°56'21"E	Length: 16.40'	North: 407,716.136'	East: 1,396,329.740'	Segment# 17: Line	Course: S9°56'21"E	Length: 10.00'	North: 407,499.787'	East: 1,396,382.869'
Segment# 4: Line	Course: S80°21'29"W	Length: 2.00'	North: 407,715.801'	East: 1,396,327.768'	Segment# 18: Line	Course: S80°21'59"W	Length: 17.00'	North: 407,496.942'	East: 1,396,366.109'
Segment# 5: Line	Course: S9°56'21"E	Length: 90.29'	North: 407,626.866'	East: 1,396,343.353'	Segment# 19: Line	Course: S9°56'21"E	Length: 60.00'	North: 407,437.843'	East: 1,396,376.465'
Segment# 6: Line	Course: N80°21'59"E	Length: 2.00'	North: 407,627.200'	East: 1,396,345.325'	Segment# 20: Line	Course: N80°21'59"E	Length: 17.00'	North: 407,440.687'	East: 1,396,393.225'
Segment# 7: Line	Course: S9°56'21"E	Length: 10.00'	North: 407,617.350'	East: 1,396,347.051'	Segment# 21: Line	Course: S9°56'21"E	Length: 16.00'	North: 407,424.928'	East: 1,396,395.987'
Segment# 8: Line	Course: S80°21'59"W	Length: 2.00'	North: 407,617.016'	East: 1,396,345.079'	Segment# 22: Line	Course: S80°21'59"W	Length: 17.00'	North: 407,422.083'	East: 1,396,379.227'
Segment# 9: Line	Course: S9°56'21"E	Length: 81.92'	North: 407,536.325'	East: 1,396,359.218'	Segment# 23: Line	Course: S9°56'21"E	Length: 99.16'	North: 407,324.411'	East: 1,396,396.342'
Segment# 10: Line	Course: N80°21'59"E	Length: 159.05'	North: 407,562.942'	East: 1,396,516.025'	Segment# 24: Line	Course: S80°15'35"W	Length: 66.00'	North: 407,313.245'	East: 1,396,331.293'
Segment# 11: Line	Course: S9°38'01"E	Length: 3.79'	North: 407,559.205'	East: 1,396,516.660'	Perimeter: 1,453.34'	Area: 34,709Sq Ft	Error Closure: 0.007'	Course: N86°12'08"W	East: -0.0072'
Segment# 12: Line	Course: N80°03'28"E	Length: 38.97'	North: 407,565.934'	East: 1,396,555.044'	Error North: 0.0005'	Precision 1: 207,620.00			
Segment# 13: Line	Course: N9°38'01"W	Length: 3.58'	North: 407,569.463'	East: 1,396,554.445'					

LEGEND

- R/W - Right of Way
- X - Found Cross Notch
- ▲ - Set Cross Notch
- 0000- - City Owned Parcels

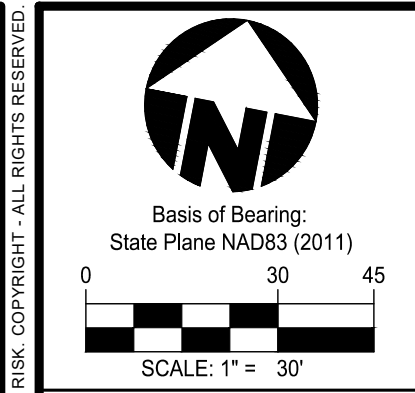
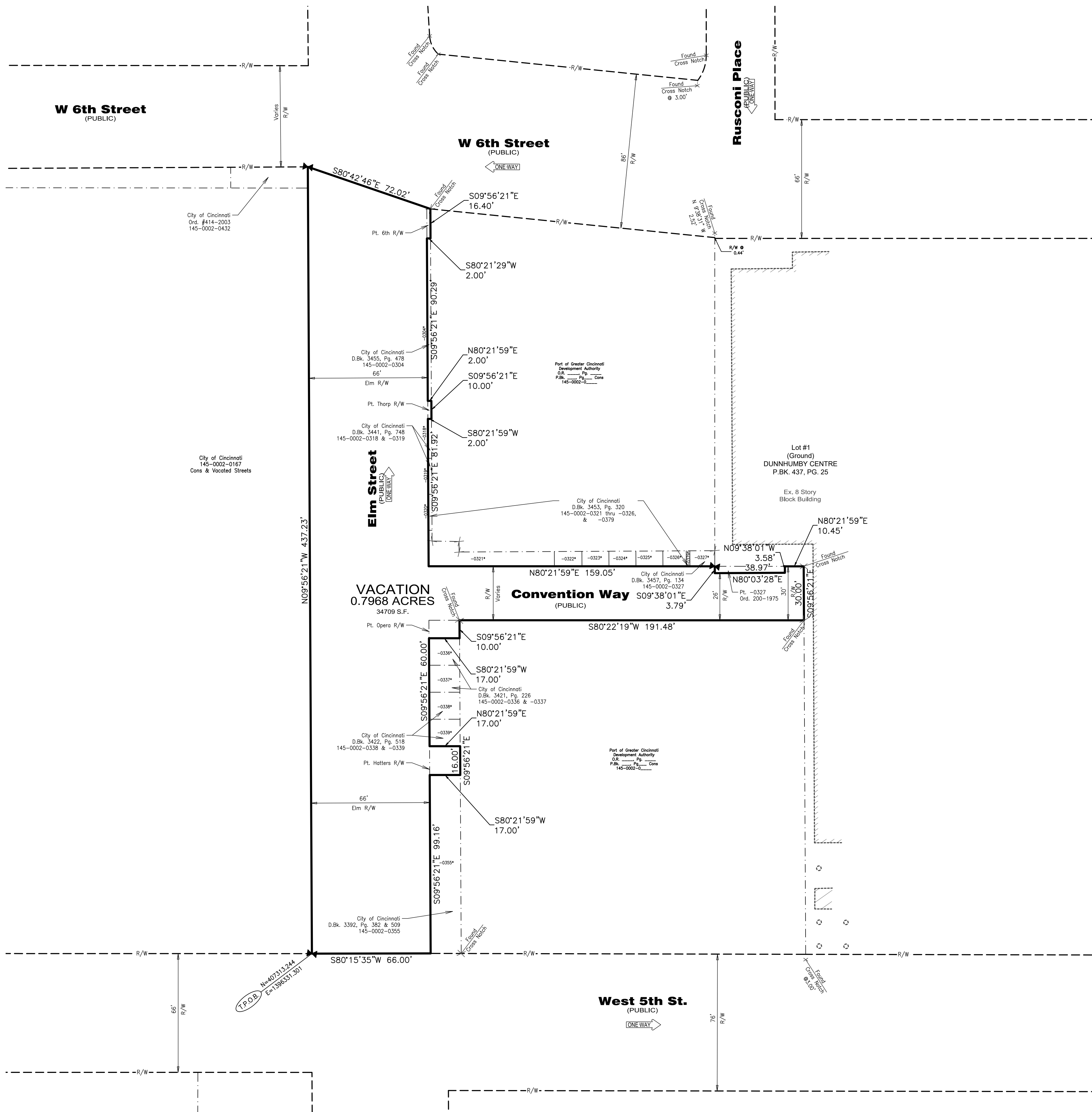
NOTES

- Basis of Bearing: State Plane Coordinates (3402) Ohio South Zone, NAD83.
- All monumentation is in good condition unless otherwise shown.
- Lines of occupation, wherever they exist, generally agree with the boundary lines except as noted.
- All documents used as shown.
- Fieldwork performed on January 5, 2023.
- Monumentation set as shown. Following this vacation the vacated parcel will be consolidated with the adjoining city owned parcels.

CERTIFICATION

I hereby state to the best of my knowledge, information and belief that the accompanying plat is the return of a survey made under my direction.

Jeffrey O. Lambert, P.S.
Registered Surveyor #7568 State of Ohio



Date	Drawn	Checked	Revision Description

PARTS OF
ELM STREET, CONVENTION WAY, 6TH STREET
THORP ALLEY, OPERA ALLEY & HATTERS ALLEY
SECTION 18, TOWN 4, F. RANGE 1 BTM
CINCINNATI TOWNSHIP
CITY OF CINCINNATI
HAMILTON COUNTY, OHIO
VACATION PLAT

Drawing:	22-0134 VP
Drawn by:	j.o.l.
Checked By:	TME
Issue Date:	4-16-24
Sheet:	1 of 1

Plot time: Apr 16, 2024 - 10:58am
Drawing name: J:\02022\22-0134\SV\DWG\22-0134 VP.dwg - Layout Tab: VP

THIS DOCUMENT AND ALL RELATED DETAIL DRAWINGS, SPECIFICATIONS, AND ELECTRONIC MEDIA PREPARED OR FURNISHED BY BAYER BECKER (BB) ARE PROUDLY MADE IN THE USA AND ARE INSTRUMENTS OF PROFESSIONAL SERVICE AND IS THE EXCLUSIVE PROPERTY OF BB. NO DISCLOSURE, USE, REPRODUCTION, OR DUPLICATION IN WHOLE OR IN PART, MAY BE MADE WITHOUT WRITTEN PERMISSION OF BB. AND IS DONE SO AT USER'S SOLE RISK. COPYRIGHT - ALL RIGHTS RESERVED.