

MAY 24, 2022

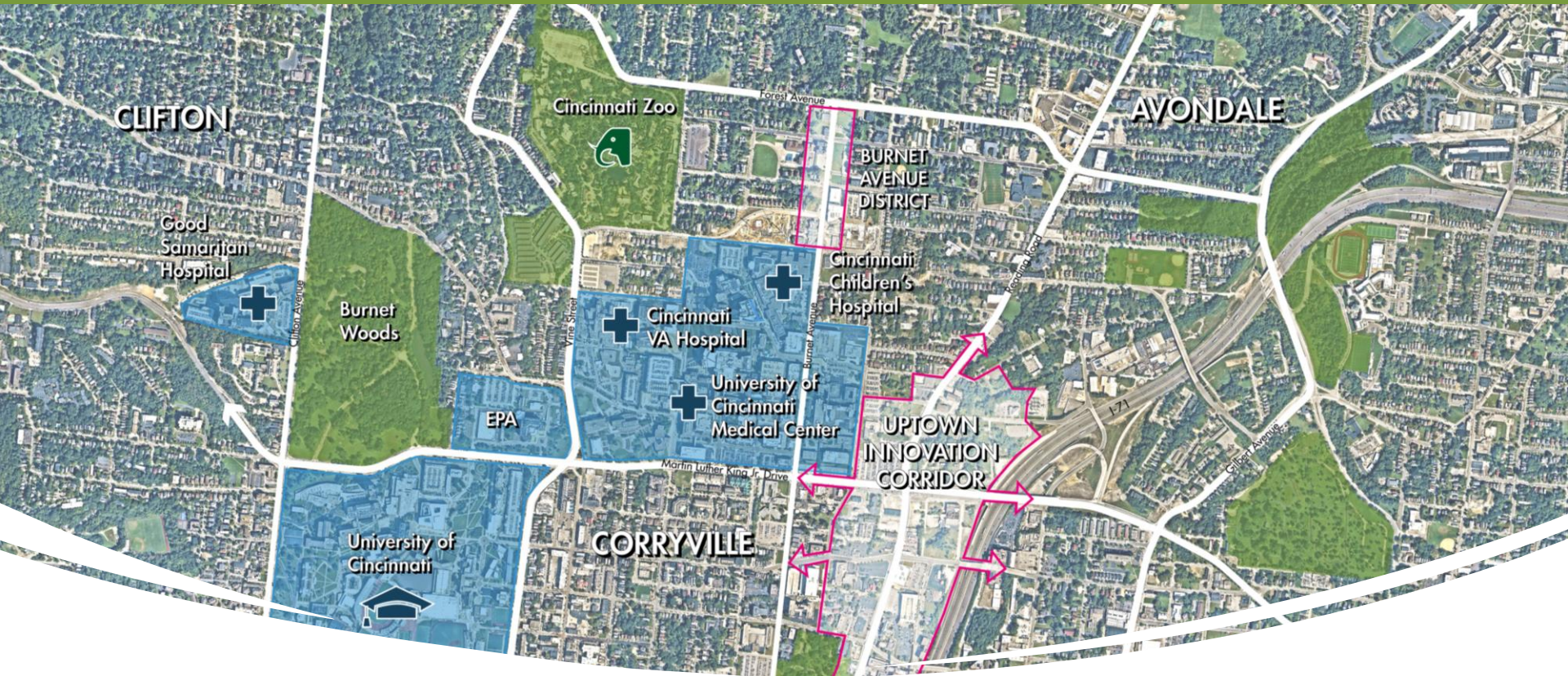
UPTOWN CONSORTIUM, INC.

**BETH ROBINSON
PRESIDENT & CEO**



**UPTOWN
CONSORTIUM, INC.**

UPTOWN IS ON THE UPRISE



UPTOWN CINCINNATI

- HOME TO 45,000 RESIDENTS IN 5 URBAN NEIGHBORHOODS
- HOME TO 4 OF THE REGION'S TOP 6 EMPLOYERS
- EMPLOYING OVER 75,000 PEOPLE
- ANNUAL ECONOMIC IMPACT OF \$20 BILLION



**DYNAMIC
PARTNERSHIP OF
REGIONAL, NATIONAL,
AND GLOBAL
INNOVATORS FOR
TRANSFORMATIONAL
IMPACT**



INCLUSIVE GROWTH & LIVABILITY

REAL ESTATE DEVELOPMENT

-

SAFE & CLEAN

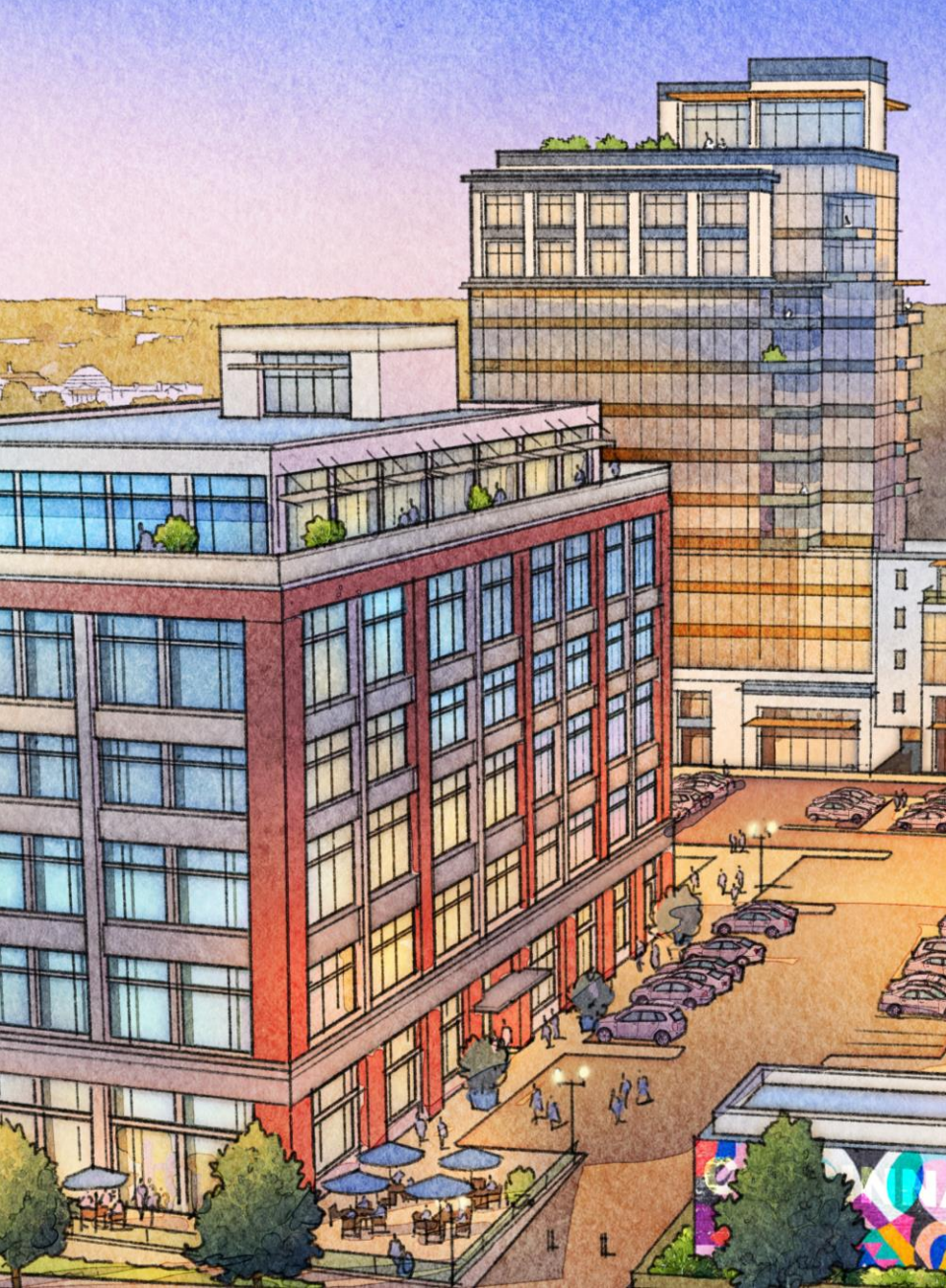
-

DISTRICT CONNECTIVITY

-

ECONOMIC INCLUSION





BUILT ENVIRONMENT DESIGNED TO BRING PEOPLE TOGETHER FROM WITHIN AND ACROSS FIELDS TO GERMINATE IDEAS AND CREATE THE NEXT BIG THING.

- **MIX OF USES & AMENITIES**
- **DIVERSE SPACE TYPES**
- **ENGAGING PUBLIC REALM**
- **CONNECTED DISTRICT**



**NEW DEVELOPMENT IS CENTERED
ON 65 ACRES OF REDEVELOPMENT
OPPORTUNITY LOCATED ON FOUR
PRIME QUADRANTS AT READING
ROAD AND MLK BOULEVARD.**

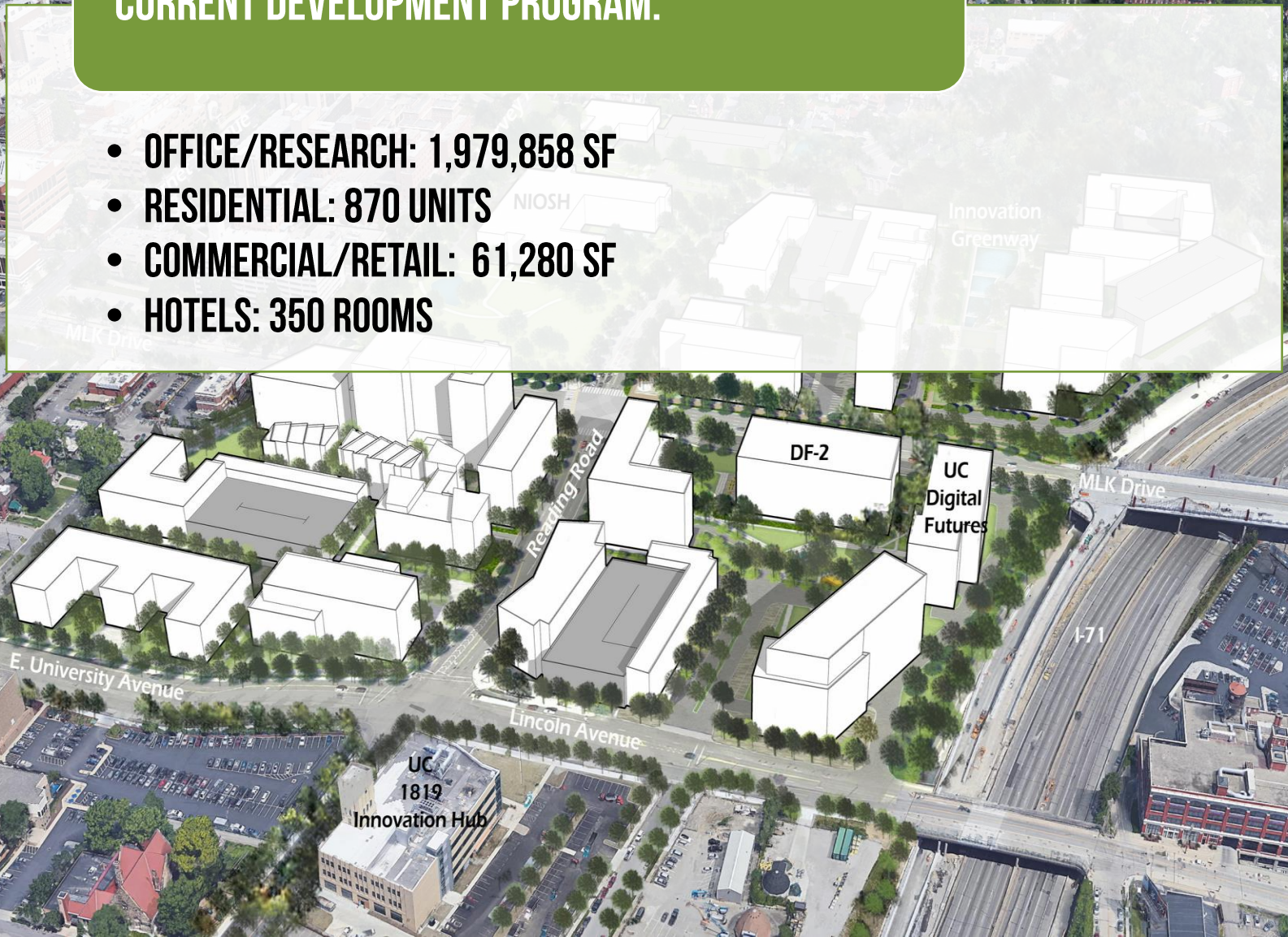






CURRENT DEVELOPMENT PROGRAM:

- OFFICE/RESEARCH: 1,979,858 SF
- RESIDENTIAL: 870 UNITS
- COMMERCIAL/RETAIL: 61,280 SF
- HOTELS: 350 ROOMS





Burnet Avenue

Harvey Avenue

MLK Drive

Reading Road

E. University Avenue

Lincoln Avenue

MLK Drive

I-71

NIOSH

DF-2

Innovation
Greenway

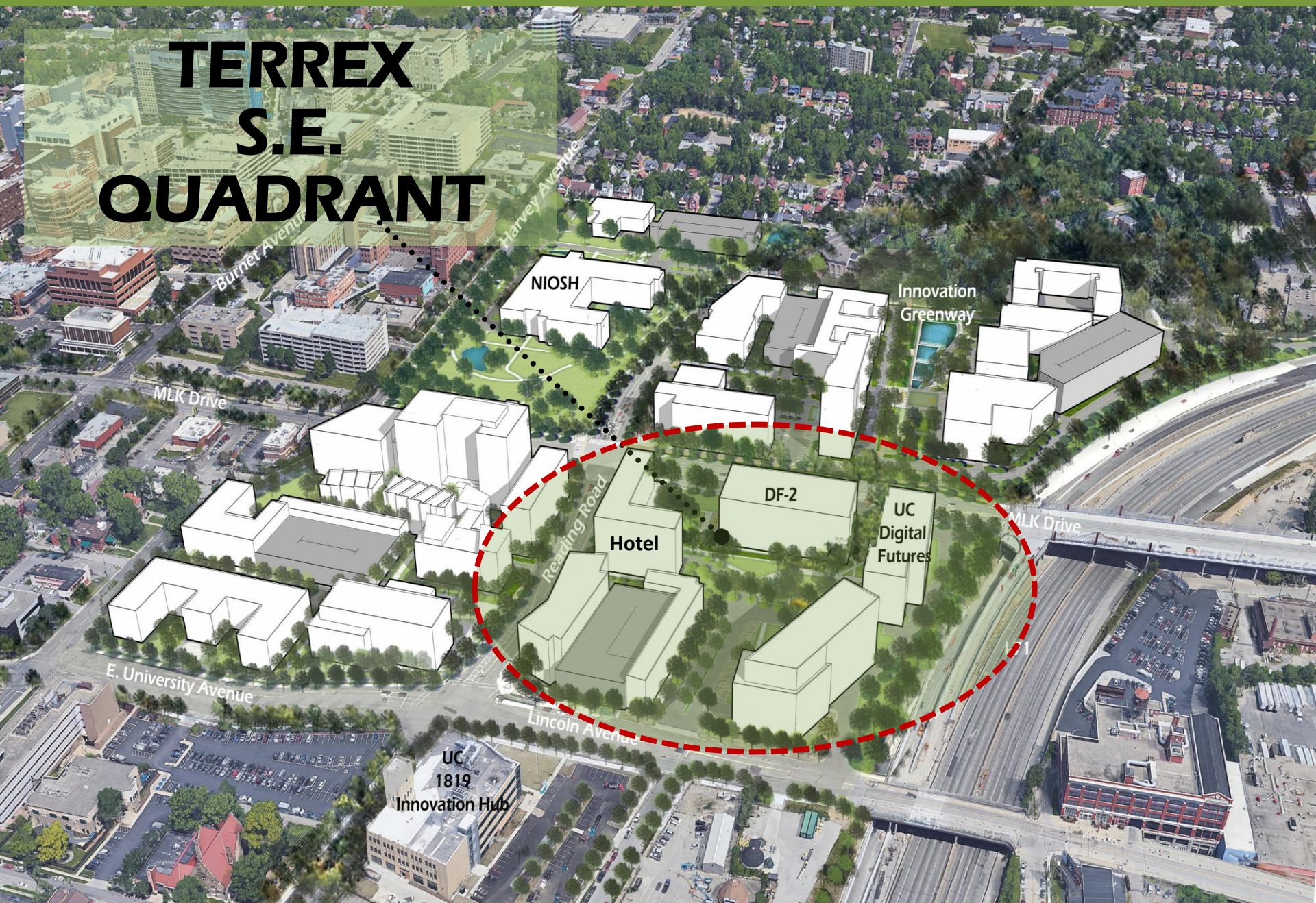
UC
Digital
Futures

UC
1819
Innovation Hub

DIGITAL FUTURES COMPLEX



TERREX S.E. QUADRANT



NIOSH

Innovation
Greenway

DF-2

Hotel

UC
Digital
Futures

UC
1819
Innovation Hub

Burnet Avenue

Harvey Avenue

MLK Drive

Reading Road

MLK Drive

E. University Avenue

Lincoln Avenue

DIGITAL FUTURES COMPLEX



DIGITAL FUTURES COMPLEX





NIOSH N.W. QUADRANT

Harvey Avenue

Burnet Avenue

MLK Drive

Reading Road

Lincoln Avenue

UC
1819

Innovation Hub

NIOSH

DF-2

UC
Digital
Futures

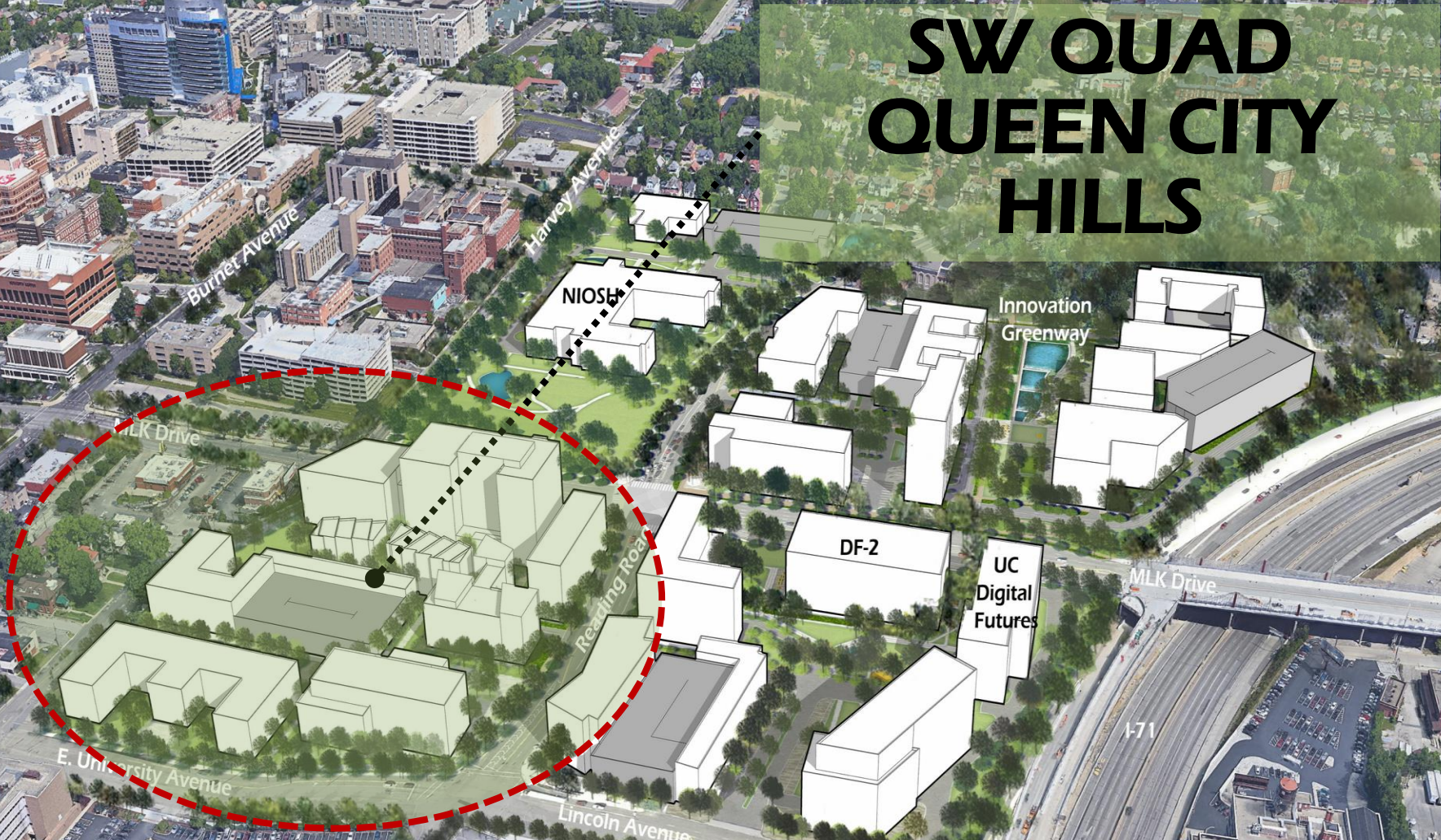
Innovation
Greenway

MLK Drive

I-71



SW QUAD QUEEN CITY HILLS





NE QUAD MLK INVESTORS I 'THE NODE'

NIOSH

Innovation
Greenway

DF-2

UC
Digital
Futures

UC
1819
Innovation Hub

Burnet Avenue

Harvey Avenue

MLK Drive

King Road

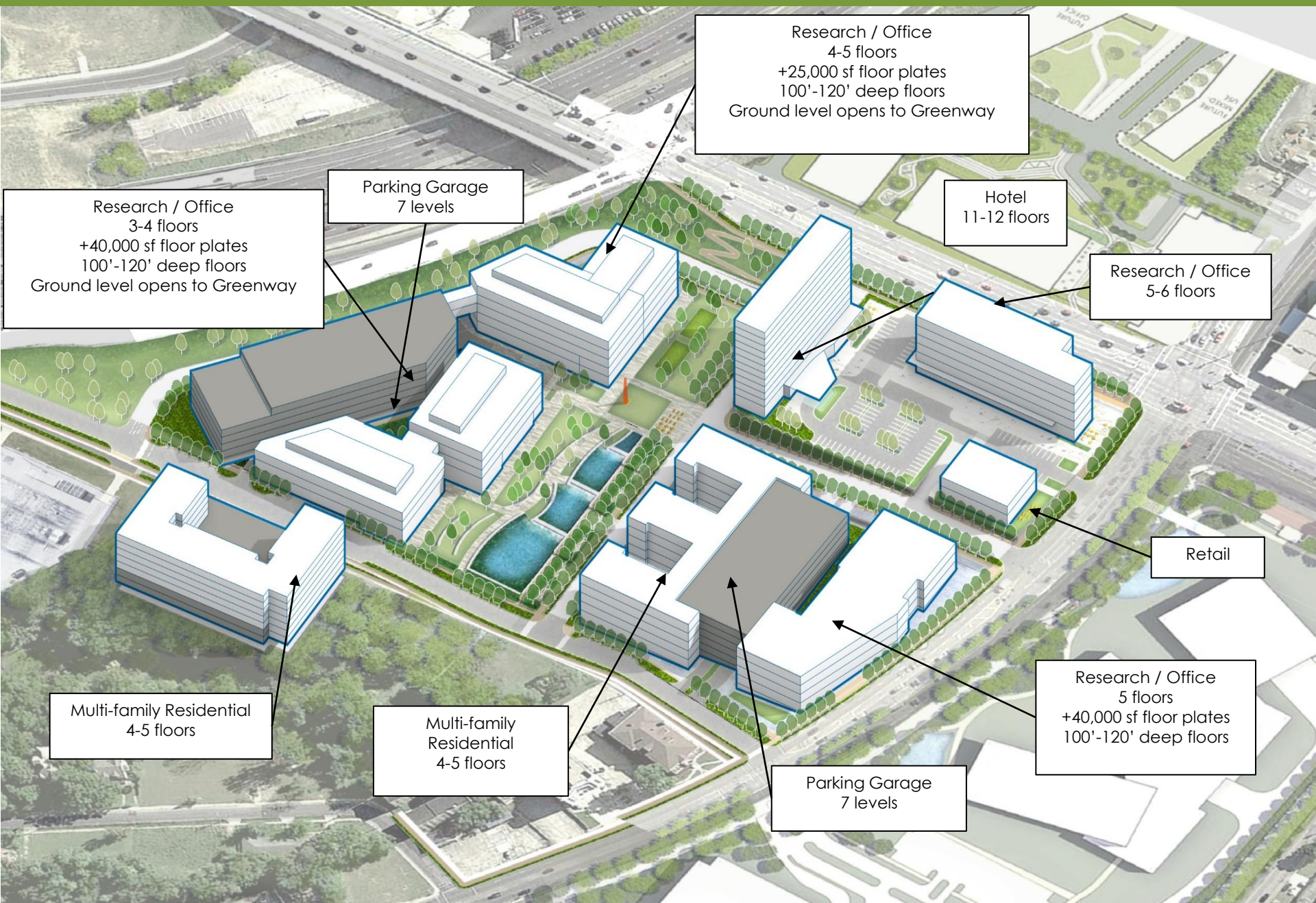
MLK Drive

1-71

E. University Avenue

Lincoln Avenue

NORTHEAST QUADRANT: THE NODE & INNOVATION GREENWAY



Research / Office
4-5 floors
+25,000 sf floor plates
100'-120' deep floors
Ground level opens to Greenway

Hotel
11-12 floors

Research / Office
5-6 floors

Parking Garage
7 levels

Research / Office
3-4 floors
+40,000 sf floor plates
100'-120' deep floors
Ground level opens to Greenway

Retail

Research / Office
5 floors
+40,000 sf floor plates
100'-120' deep floors

Parking Garage
7 levels

Multi-family Residential
4-5 floors

Multi-family Residential
4-5 floors

UPTOWN INNOVATION GREENWAY

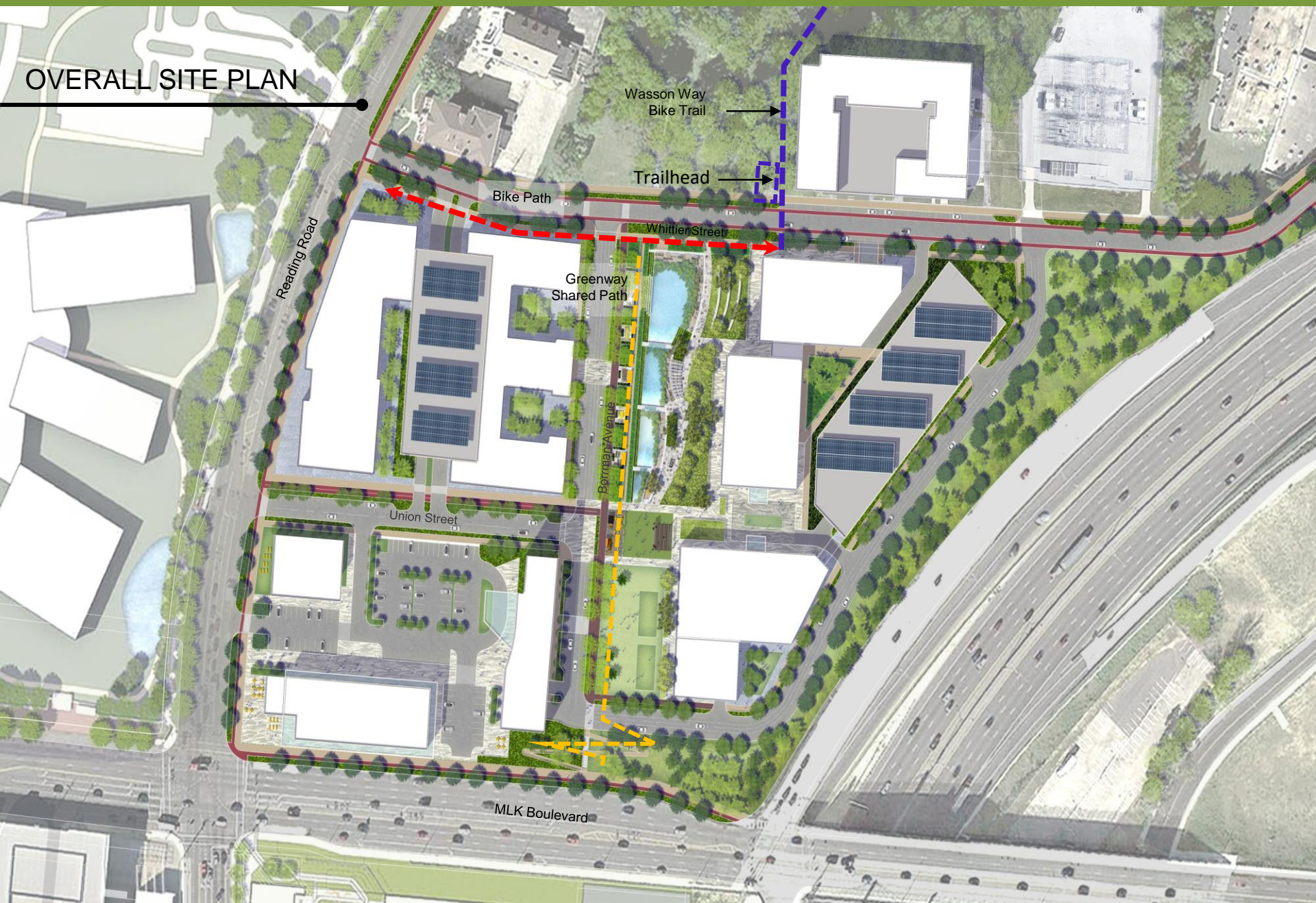
WATER FEATURE - OVERLOOK



BIKE CONNECTIVITY



OVERALL SITE PLAN



Wasson Way
Bike Trail

Trailhead

Bike Path

Whittier Street

Greenway
Shared Path

Borin Avenue

Union Street

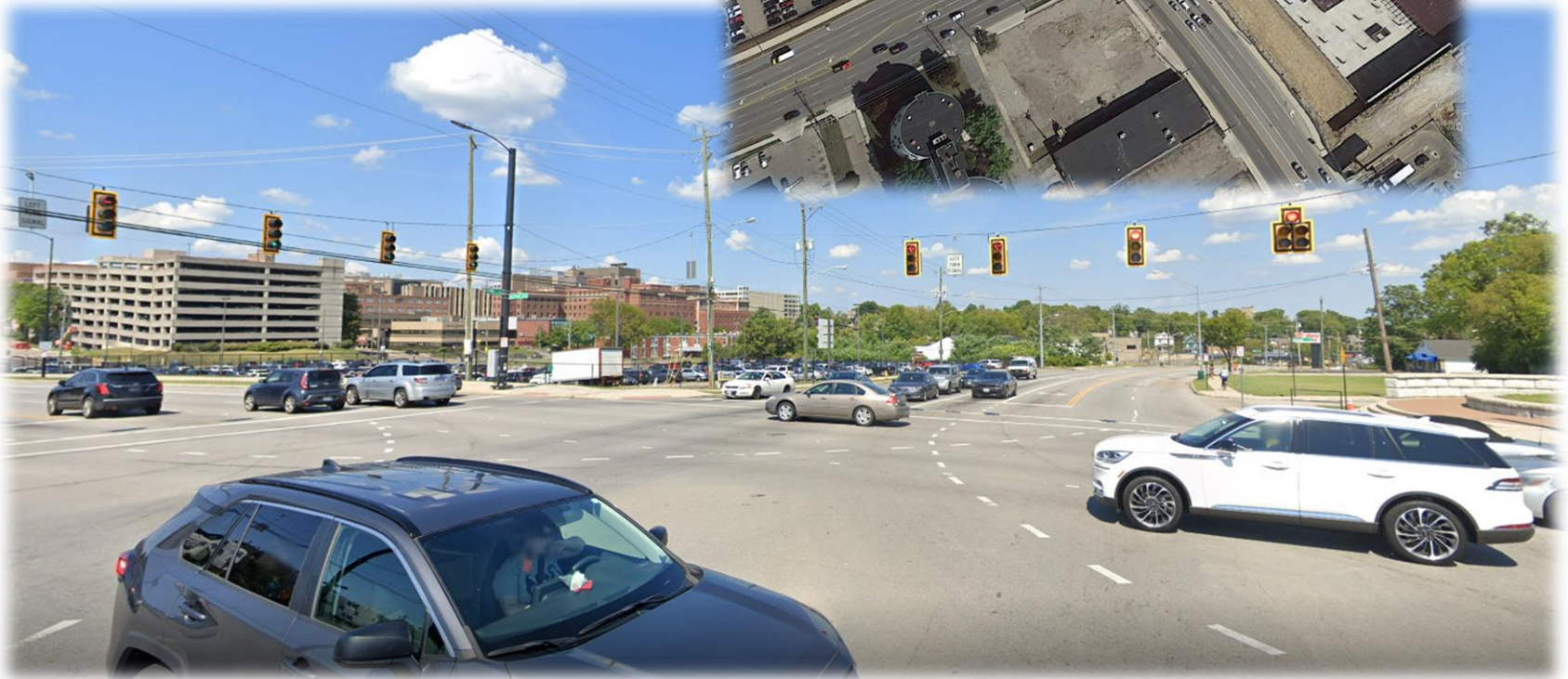
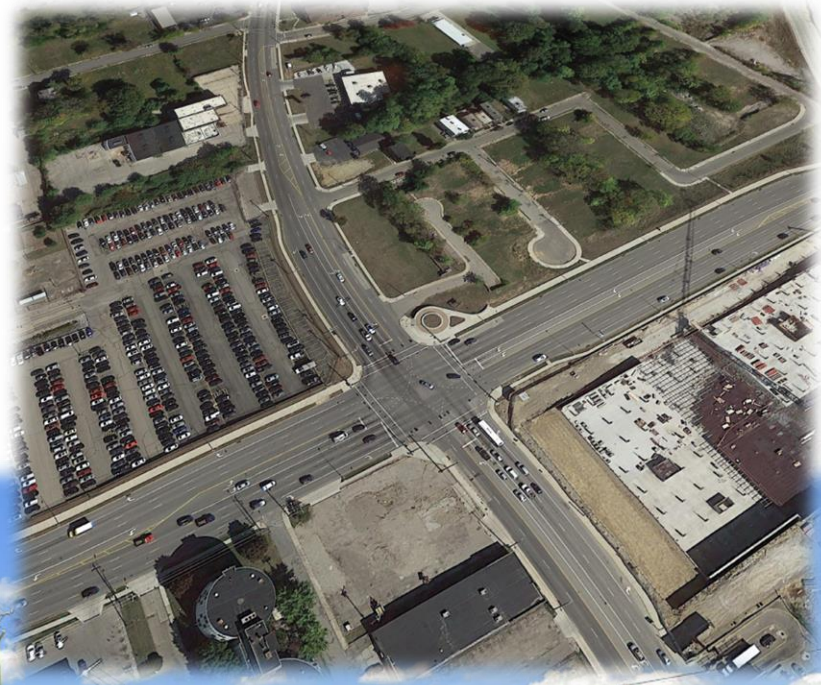
MLK Boulevard

Reading Road

TRAFFIC & PEDESTRIAN IMPROVEMENTS AT MLK & READING



**UCI IS WORKING WITH DOTE AND
COMMUNITY PARTNERS TO
MANAGE TRAFFIC AND CREATE
PEDESTRIAN CONNECTIONS.**





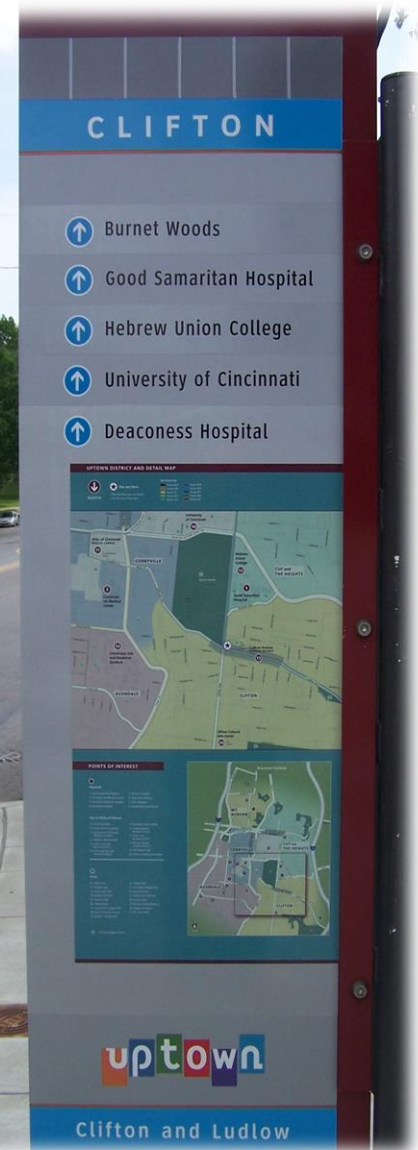
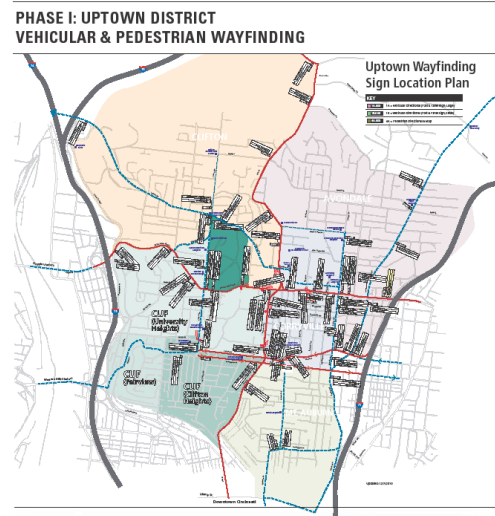
UPTOWN
CONSORTIUM, INC.

UPTOWN WAYFINDING & SIGNAGE



THE CURRENT UPTOWN WAYFINDING SYSTEM WAS INSTALLED IN 2012 AND IS MANAGED BY UCI.

- **IN ALL, 64 SIGNS WERE INSTALLED THROUGHOUT UPTOWN.**
- **UCI IS PROPOSING TO PARTNER WITH THE CITY OF CINCINNATI TO DEVELOP AN OVERARCHING PROGRAM FOR COMPREHENSIVE WAYFINDING IN UPTOWN.**
- **THIS MASTER PLAN WILL ESTABLISH A PATTERN LANGUAGE FOR PUBLIC WAYFINDING THAT CAN BE ADAPTED TO INDIVIDUAL DEVELOPMENT AREAS.**



ECONOMIC INCLUSION & COMMUNITY ENGAGEMENT

ECONOMIC INCLUSION WITH WEB VENTURES



- **GOAL IS FOR COMMUNITY MEMBERS TO GROW ALONGSIDE NEW DEVELOPMENT AND EXPAND OPPORTUNITIES FOR UPTOWN RESIDENTS, SPECIFICALLY MINORITY & WOMEN.**
- **EMPLOYMENT – PREDEVELOPMENT, CONSTRUCTION & PERMANENT JOBS**
- **BUSINESS OPPORTUNITIES – CONTRACTING & POST-CONSTRUCTION FOR SMALL BUSINESSES**
- **INVESTMENT OPPORTUNITIES – WEALTH BUILDING**
- **APPLICATION ACROSS ALL PROJECTS: WHOLISTIC APPROACH**
- **UCI & WEB CREATE LONG-TERM PARTNERSHIPS WITH UPTOWN COMMUNITIES & AGENCIES WHICH LEADS TO SETTING GOALS & EXPECTATIONS FOR ECONOMIC INCLUSION, WORKFORCE DEVELOPMENT AND COMMUNITY ENGAGEMENT INITIATIVES WITH DEVELOPERS.**



WEB VENTURES TEAM



UCI & WEB APPRENTICESHIP WEBINAR

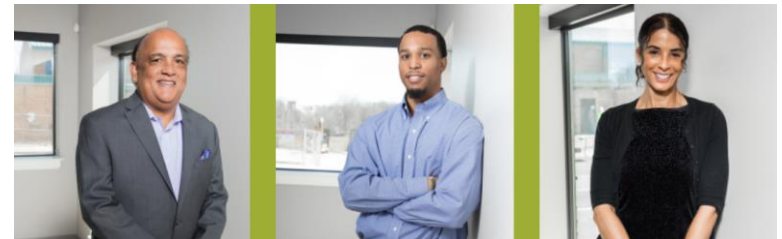
COMMUNITY ENGAGEMENT WITH AVONDALE DEVELOPMENT CORP.



- **ADC PROVIDES PLANNING CONSULTATION SERVICES AND COMMUNITY ENGAGEMENT FOR UCI FOCUS AREAS INCLUDING THE UPTOWN INNOVATION CORRIDOR & BURNET AVENUE REDEVELOPMENT INCLUDING, BUT NOT LIMITED TO:**
 - **PARTICIPATION IN PLANNING MEETINGS WITH UCI STAFF, PROJECT DEVELOPERS, AND COMMUNITY STAKEHOLDERS**
 - **TARGETED ENGAGEMENT WITH SMALLER GROUPS (EX: CHURCHES & RESIDENT BLOCK CLUBS)**
 - **INCLUSION OF UCI UPDATES IN ADC'S MONTHLY E-NEWSLETTER**



ADC TEAM



UCI & ADC COMMUNITY ENGAGEMENT SESSION

- **THE AVONDALE DIGITAL INCLUSION PROJECT: ASSESSING DIGITAL ACCESS, NEEDS AND RESOURCES**



UPTOWN CONSORTIUM, INC 619 OAK STREET, STE 1100 CINCINNATI OHIO 45206 (513) 861-8726
UPTOWNCINCINNATI.COM