



# City of Cincinnati

801 Plum Street  
Cincinnati, OH 45202

## Agenda - Final Youth & Human Services

*Chairperson Anna Albi*  
*Vice Chair Evan Nolan*  
*Councilmember Ryan James*  
*Vice Mayor Jan-Michele Kearney*

---

Tuesday, June 16, 2026

12:30 PM

Council Chambers, Room 300

---

### SPECIAL JOINT MEETING WITH CPS

### PRESENTATIONS

#### Hamilton County Juvenile Court: Keeping Kids, Families & Community Safe

Judge Kari Bloom, Juvenile Court

#### Traffic Calming Near Schools

Greg Long, Interim Director, DOTE

Melissa McVay, MCP, Senior City Planner

#### Cincinnati Safe Routes to School Plan Update

Tiffany White, Healthy Communities Program Manager, Department of Health

Scott Dean, Active Living Coordinator, Department of Health

### AGENDA

- [202602279](#) **PRESENTATION**, submitted by Councilmember Albi regarding Hamilton County Juvenile Court: Keeping Kids, Families & Community Safe  
**Sponsors:** Albi  
**Attachments:** [Presentation](#)
- [202602278](#) **PRESENTATION** submitted by Sheryl M. M. Long, City Manager, dated 6/16/2026, regarding Traffic Calming Near Schools.  
**Sponsors:** City Manager  
**Attachments:** [Transmittal](#)  
[Presentation](#)
- [202602312](#) **PRESENTATION** submitted by Sheryl M. M. Long, City Manager, dated 6/16/2026, regarding Cincinnati Safe Routes to School Plan Update.  
**Sponsors:** City Manager

**Attachments:**     [Transmittal  
Presentation](#)

4.     [202601704](#)     **REPORT**, dated 6/3/2026, submitted Sheryl M. M. Long, City Manager, regarding Assessment of Need for Additional Lighting and Camera Infrastructure in Parks, Playgrounds, and Recreational Areas. (Reference Document # 202600233)

**Sponsors:**     City Manager

**Attachments:**     [Report](#)

5.     [202602280](#)     **REPORT**, dated 6/16/2026, submitted Sheryl M. M. Long, City Manager, regarding Assessment of Need for Additional Lighting and Camera Infrastructure in Parks, Playgrounds, and Recreational Areas. (Reference Document # 202600233)

**Sponsors:**     City Manager

**Attachments:**     [Report  
Attachment](#)

ADJOURNMENT



# Hamilton County Juvenile Court

Keeping Kids, Families, & the  
Community Safe

# Role of Juvenile Court

- ▶ Keep children safe
  - ▶ Custody and child support disputes
  - ▶ Children alleged to be abused and/or neglected
  - ▶ Kids under the age of 18 charged by police with a crime
- ▶ 2025:
  - ▶ Nearly 23,000 visitors came through the doors of 800 Broadway
  - ▶ 79% of 17,500 total filings were for non-delinquency issues



# Role of Juvenile Court: Detention



- ▶ Operate the Youth Detention Center at 2020 Auburn Ave.
  - ▶ Children charged with a serious crime are held while their case moves through the court system
  - ▶ Includes:
    - ▶ On-site CPS School
    - ▶ Since 2023, 24 students have earned their high school diploma



# Role of Juvenile Court: Detention



- ▶ Behavioral health, including multi-sensory de-escalation spaces
- ▶ Balanced, nutritious, school-lunch based meals
- ▶ Community partnerships, recreation and volunteer opportunities



# Juvenile Court Systems Partners



Cincinnati Children's Hospital  
Talbert House  
Central Clinic  
City of Cincinnati  
Cincinnati Police Dept.  
Cordata  
Cincinnati Public Schools  
Central Clinic Behavioral Health  
Hamilton Co. Office of Family Voice  
Hamilton Co. Mental Health &  
Recovery Services  
Hamilton County Dev Disabilities  
Services  
Help Center, UC College of Law

Hopeful Empowered Youth-HEY!  
Interact for Health  
Job and Family Services  
Hamilton County Office of Reentry  
ProKids  
Hamilton County Prosecutor's Office  
Public Defender's Office  
University of Cincinnati Corrections  
Institute

# Juvenile Court Systems Partners

- ▶ Vision:
  - ▶ County-wide, collaborative system to support needs of system-involved children & families
  - ▶ Identify solutions to resolve conflict, thrive and stay out of the system
  - ▶ Make Hamilton County the best place in the nation to raise a family



# 2024 Assessment Center Recidivism Rates



## ▶ One-year post program completion:

- ▶ 81.5% of youth assigned to a Service Navigator did not receive a new adjudication
- ▶ 72% of youth with an official charge did not receive a new adjudication
- ▶ 74% of youth charged with a felony did not receive a new adjudication
- ▶ 90.5% of youth charged with an unofficial charge did not receive a new adjudication

# Juvenile Court Data

- ▶ Between Jan. 1 and May 31
  - ▶ Homicide charges: Down 33%
    - ▶ 2026: 14
    - ▶ 2022: 21
  - ▶ Assault charges: Down 51%
    - ▶ 2026: 98
    - ▶ 2022: 199
  - ▶ Felonious Assault charges: Down 9.6%
    - ▶ 2026: 56
    - ▶ 2022: 62
  - ▶ Aggravated Robbery charges: Down 31%
    - ▶ 2026: 18
    - ▶ 2022: 26



# Juvenile Court Summer of Discovery





HAMILTON COUNTY JUVENILE COURT ANNOUNCES

# SUMMER of DISCOVERY

CONNECTING YOUTH. CREATING OPPORTUNITIES. BUILDING BRIGHTER FUTURES.

**Starting June 1**, as part of their pre-trial orders, youth who come through Hamilton County Juvenile Court over the summer will be required to discover resources in their own community.

**OUR GOAL IS SIMPLE:**

-  Connect every child to a safe adult in their own neighborhood.
-  Identify and address the root issues that brought the child to court.
-  Expose children and families to resources that exist and are readily available to them.
-  Intentionally integrate the child into their community in a positive way.
-  Prevent the child from recidivating further into the court system.



**YOUTH WILL BE REQUIRED TO:**



OBTAIN A LIBRARY CARD



OBTAIN A MEMBERSHIP TO THEIR NEIGHBORHOOD CINCINNATI RECREATION CENTER OR YMCA



BRING A COPY OF THEIR LAST QUARTER GRADES TO THEIR NEXT COURT HEARING

 THIS DOES NOT APPLY TO CHILDREN HELD IN DETENTION, BOUND OVER, OR FACING A CHARGE INVOLVING A GUN.

Together with our community partners, we are investing in positive pathways that help youth thrive all summer long.

*Discovery. Engagement. Opportunity.*

IN SUPPORT — WITH —



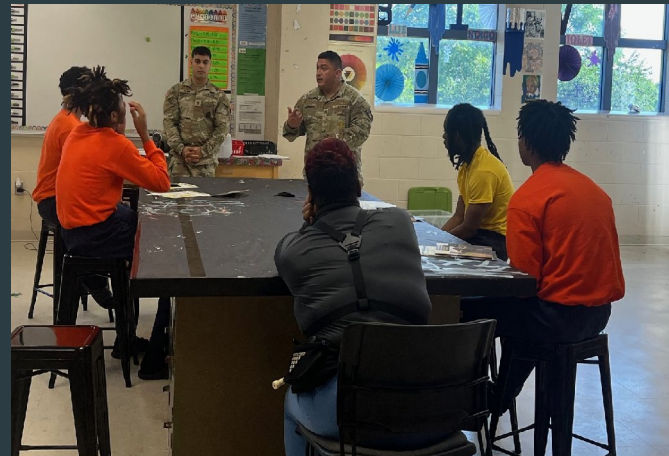
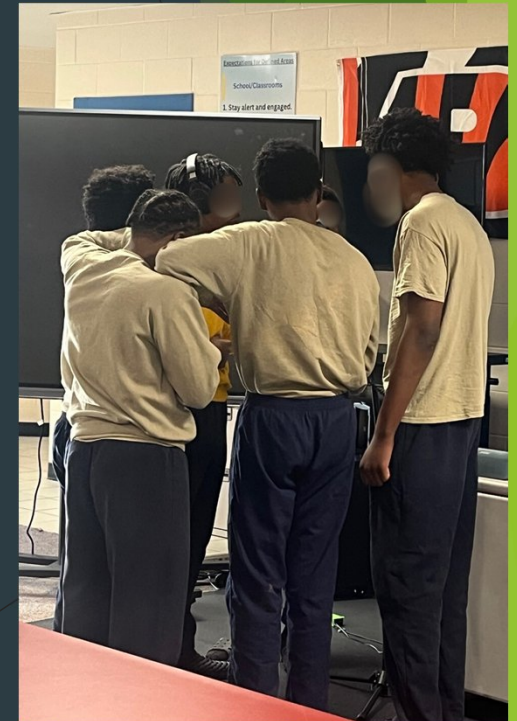
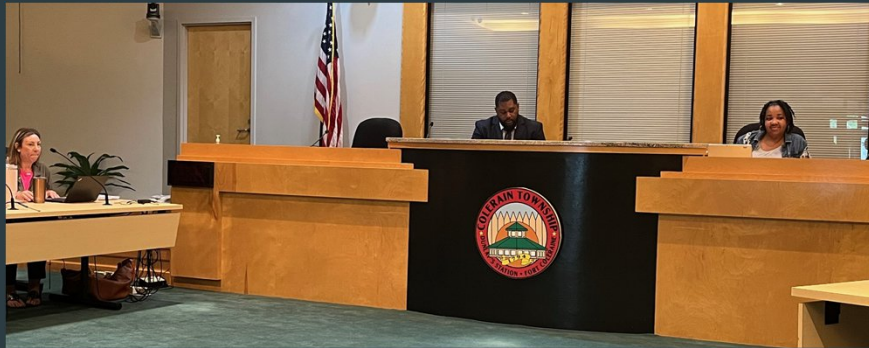







[juvenile-court.org](http://juvenile-court.org)

# Juvenile Court



**June 16, 2026**

**To:** Members of the Youth & Human Services Committee

**From:** Sheryl M. M. Long, City Manager

202602278

**Subject: Presentation – Traffic Calming Near Schools**

---

Attached is the presentation regarding Traffic Calming Near Schools.

**Cc:** Greg Long, Interim Director, Department of Transportation and Engineering  
Melissa McVay, Supervising Management Analyst

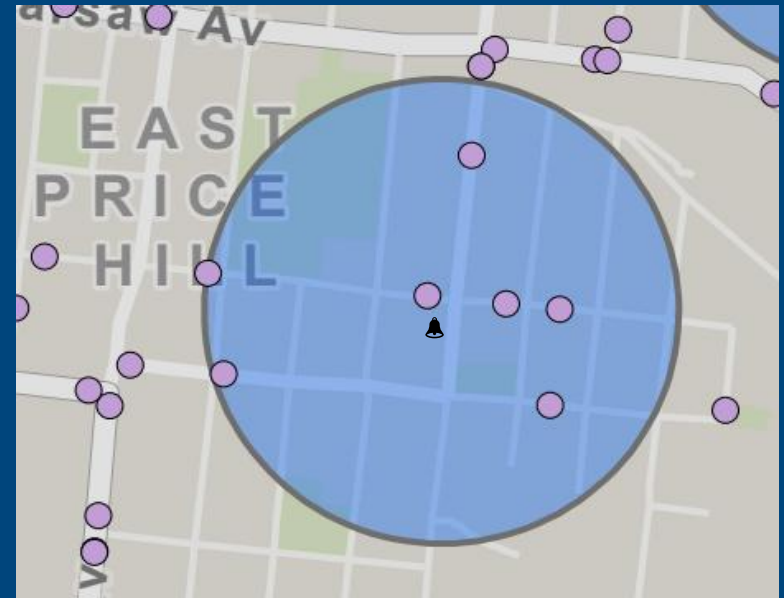
# Traffic Calming Near Schools

Youth & Human Services Special Joint Meeting with CPS

# School Zone Definitions

- ORC: the portion of a street that is encompassed by projecting the school property lines to the fronting street
- DOTE: 1,000 ft circular buffer around the school

Holy Family School, East Price Hill



## Crash Data – All Crashes

In the years 2023, 2024, and 2025, there were 35,474 crashes citywide. Approximately 24% (8,563) of those crashes occurred within 1,000 ft of a school. Approximately 1% of these crashes were fatal or severe, which is slightly lower than the citywide average.

Total traffic crashes 2023-2025	# of crashes within 1,000ft of a school	% of total
35,474	8,563	24.14%

## Crash Data – Pedestrian/Bike Crashes

During this three-year period, there were 957 pedestrian and bike crashes citywide; 307 of those crashes occurred within 1,000 ft of a school.

Total pedestrian/bike crashes 2023-2025	# of pedestrian/bike crashes within 1,000ft of a school	% of total
957	307	32.08%

## Crash Data – School Commute Hours

Considering school commute hours, between the hours of 7:00am to 9:00am and 2:00pm to 4:00pm Monday through Friday, August through May (the school year), there were 5,014 crashes city wide. Twenty-six percent of those crashes (1,310) occurred within 1,000 ft of a school.

Total traffic crashes during school commute hours 2023-2025	# of crashes within 1,000ft of a school	% of total
5,014	1,310	26.12%

## Crash Data – Ped/Bike During School Commute Hours

And of the total crashes during school commute hours during the school year for this three-year period, there were 176 pedestrian and bike crashes city wide. Twenty-six percent of those crashes (46) occurred within 1,000 ft of a school.

Pedestrian/bike crashes during school commute hours 2023-2025	# of crashes within 1,000ft of a school	% of total
176	46	26.14%

## Speed Data

DOTe collected speed data near 6 schools on Tuesday April 28<sup>th</sup> and Wednesday April 29<sup>th</sup>.

The speed limit during school arrival and dismissal times is 20mph; outside of arrival and dismissal hours the speed limit ranges from 25 to 35, depending on location.

Raised Crosswalk, Oyler School, Lower Price Hill



## Speed Data

The percentage of drivers exceeding the 20mph speed limit varied between 4% and 87%.

However, less than 30% of drivers exceeded 30mph, and less than 2% of drivers exceeded 40mph.

Raised Crosswalk, Rothenberg Academy, OTR



# Speed Data

School	Data Collection Hours	% of drivers exceeding 20+ MPH	% of drivers exceeding 30+ MPH	% of drivers exceeding 40+ MPH	Speed limit outside of school arrival/dismissal
Carson School	7:10-7:55 AM 1:55-2:40 PM	16%	0.23%	0.04%	25mph
Orion Academy	7:20-8:05 AM 2:35-3:20 PM	4%	1.54%	0.64%	30mph
Aiken HS	7:30-8:15 AM 2:45-3:30 PM	29%	0.25%	0.00%	35mph
Woodward HS	7:45-9:05 AM 3:35-4:20 PM	87%	27%	1.01%	35mph
Withrow HS	7:30-8:15 AM 2:45-3:30 PM	79%	30%	1.11%	35mph
Dater	8:40-9:25 AM 3:25-4:10 PM	72%	17%	0.47%	35mph

# Traffic Calming Program Overview

- Competitive program
- Staff work with community councils to identify streets for consideration in each budget cycle
- Criteria: speed data, crash data, pedestrian generators (schools)
- Streets are scored and ranked
- Projects are funded in ranked order, as many as the budget allows

Raised Crosswalk, Aiken High School, College Hill



# Questions?

**Greg Long**

Greg.Long@cincinnati-oh.gov

513-352-2366

---

Please visit our website for more information.

<https://www.cincinnati-oh.gov/dote/safety/traffic-calming/>

**June 16, 2026**

**To:** Members of the Youth & Human Services Committee  
**From:** Sheryl M. M. Long, City Manager 202602312  
**Subject: Presentation – Cincinnati Safe Routs to School Plan Update**

---

Attached is the presentation regarding Cincinnati Safe Routes to School Plan Update.

**Cc:** Scott Dean, MPH, Cincinnati Health Department  
Dr. Grant Mussman, Health Commissioner, Cincinnati Health Department  
Tiffany White, MPH, RD, LD, CLC, Cincinnati Health Department

# Cincinnati Safe Routes to School Plan Update



**Tiffany White MPH, RD, LD, CLC**  
*Tiffany.White@Cincinnati-OH.gov*



**Scott Dean MPH**  
*William.Dean@Cincinnati-OH.gov*

June 2026

# What is a SRTS Plan

- The city's focus is on **youth pedestrians** to make it safer for students to walk and bike to school
- This plan will assist in developing and implementing initiatives and projects to help **eliminate** roadway related deaths and severe injuries, while **increasing safe, healthy, equitable mobility for all**



# What is a SRTS Plan

## ODOT SRTS Funding

- **Infrastructure projects** within two miles of schools serving K-12 students. ODOT will reimburse up to 100% of eligible costs for all phases, including preliminary engineering, detailed design, right-of-way, construction, and construction engineering.
  - Project limit: \$1,000,000.
- **Non-infrastructure activities such as education, encouragement, enforcement or evaluation.** ODOT will reimburse up to 100% of eligible costs for items such as training and materials, program supplies, small safety and education incentives, and public awareness campaigns.
  - Project limit: \$60,000 or \$120,000 for a two-year project.



Department of  
Transportation



# Progress on the Previous SRTS Plan

School name	What it has	What's been constructed	SVI
Rothenberg Prep Academy	Non-flashing speed sign Painted crosswalk Schoolzone sign Speed limit sign Crossing guard	Bump-out and raised crosswalk on Main St @ E Clifton Ave (2026 construction)	0.79
George Hays-Jennie Porter School	Non-flashing speed sign Painted crosswalk Schoolzone sign Speed limit sign Crossing guard	All-way stop at Court & Mound. Upcoming redesign of Linn St (2027). Concept improvement plans on Court St.	0.81
South Avondale School	Flashing speed sign Painted crosswalk Crosswalk sign speedbump Schoolzone sign speed limit sign Crossing Guard	Reading Rd speed cushions. Future BRT on Forest Ave and Reading Rd north of Forest.	0.93
Carson School	Flashing speed sign Painted crosswalk Crosswalk sign speedbump Schoolzone sign speed limit sign Crossing Guard	Glenway Ave redesign and speed cushions	0.7
Rees Evan Price Academy	Flashing speed sign Painted crosswalk Crosswalk sign speedbump Schoolzone sign speed limit sign Crossing Guard	Glenway Ave speed cushions	0.95



# Why Update the SRTS Plan?

- Outdated plan
- Significant road changes
- School restructuring
- CHC Grant - TA from Toole Designs

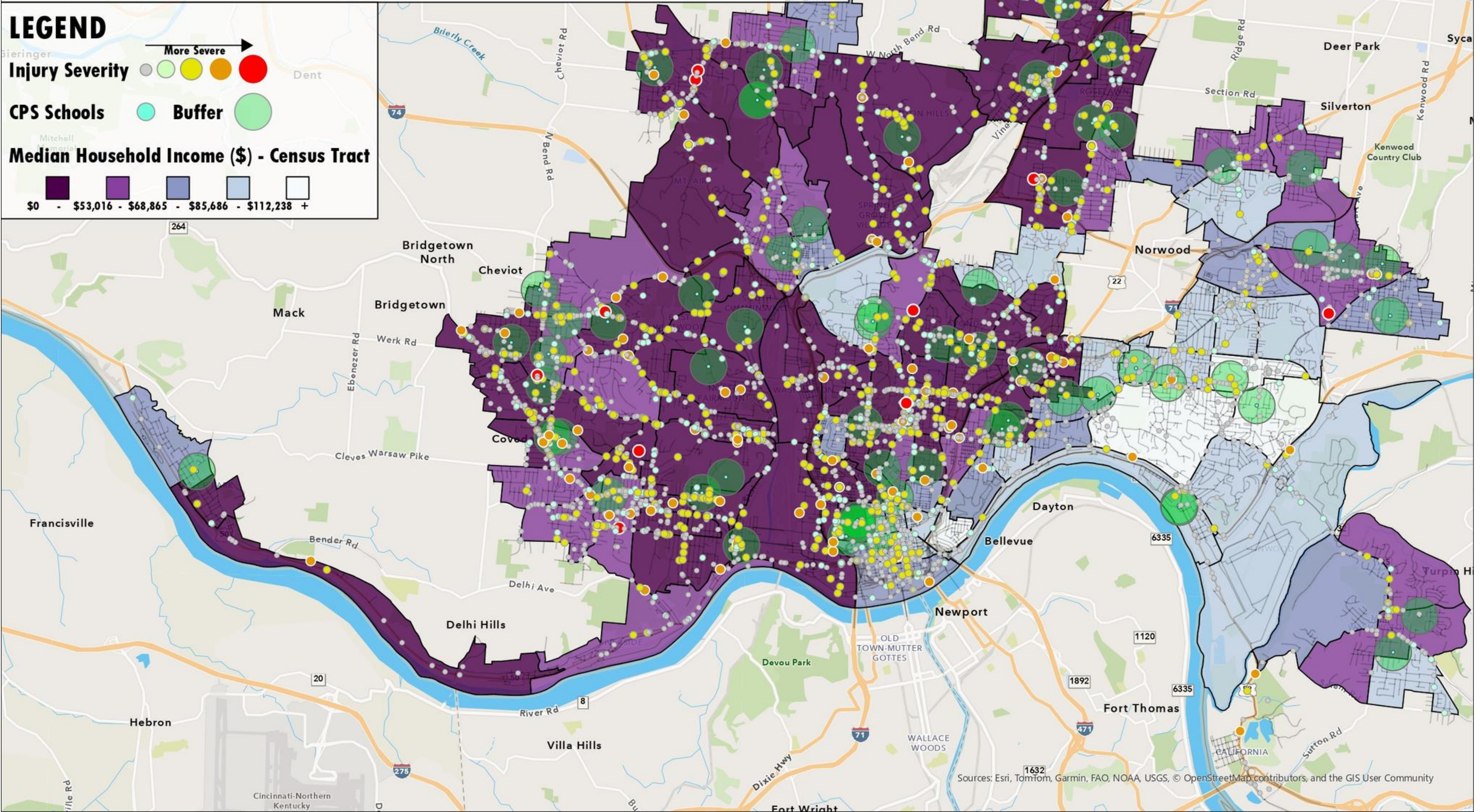
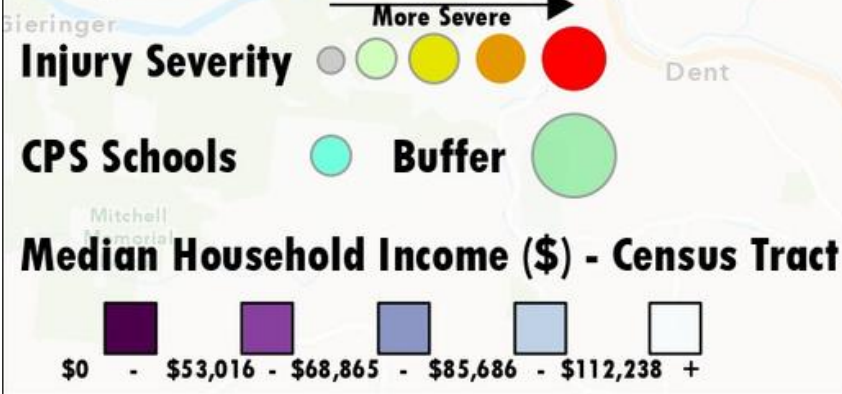


# Youth-Involved Crashes - CPS Schools

Crashes within 1/4 mile of school (2021 - 2025)

May 2026

## LEGEND



Sources: Esri, TomTom, Garmin, FAO, NOAA, USGS, © OpenStreetMap contributors, and the GIS User Community

# WEST CORRIDOR SCHOOL PATHWAYS AND SELECTION OPTIONS

2026-2027



## Select Your School

Join Cincinnati Public Schools and experience a new era in education. Explore the diverse school options near you in the corridor where you live — East, West or Central.

### Questions?

Contact the CPS Customer Care Center by calling **513-363-0123**, emailing [schoolselection@cps-k12.org](mailto:schoolselection@cps-k12.org) or visiting the **CPS Education Center**  
2651 Burnet Avenue, Cincinnati, OH 45219



Additional information available at [cps-k12.org/SchoolSelection](https://cps-k12.org/SchoolSelection)

### EARLY LEARNING CENTERS/ PRESCHOOL

- Rising Stars at Cheviot/Westwood



### ELEMENTARY SCHOOLS

- PreK-Grade 5**
- Mt. Airy School

- Kindergarten-Grade 5**
- Westwood School

- Pre-K-Grade 6**
- Carson School
  - Chase School
  - Cheviot School
  - Covedale School
  - Midway School
  - Rees E. Price Academy
  - Roll Hill School

- PreK-Grade 7**
- LEAP Academy

- PreK-Grade 8**
- Roberts Academy

- Montessori (PreK-Grade 6)**
- Dater Montessori
  - Gamble Montessori

#### Options Include

- Montessori (PreK-Grade 6)**
- Parker Woods Montessori

### MIDDLE SCHOOLS

- Grades 7-8**
- Ethel M. Taylor Academy

### HIGH SCHOOLS

- Grades 7-12**
- Gilbert A. Dater High School

- Grades 9-12**
- Western Hills High School

- Montessori (Grades 7-12)**
- Gamble Montessori High School

### COMBINATION

- PreK-Grade 9**
- Saylor Park School

- PreK-Grade 12**
- Oylar School

#### Options Include

- Grades 7-12**
- Taft High School

- Grades 9-12**
- Aiken High School
  - Hughes STEM High School
  - Shredder High School
  - Withrow University High School
  - Woodward Career Technical High School

### DISTRICTWIDE

- PreK-Grade 6**
- Fairview-Clifton German Language School

- PreK-Grade 8**
- Academy of Multilingual Immersion Studies (AMIS)
  - Academy of World Languages (AWL)

- Kindergarten-12**
- John G. Gilligan Digital Academy
  - School for Creative and Performing Arts (SCPA)\*

- Grades 3-12**
- Spencer Center for Gifted and Exceptional Students\*

- Grades 7-12**
- Dr. O'dell Owens Center for Learning (7-12)
  - Walnut Hills High School\*

- Grades 9-12**
- Virtual High School

\*Denotes qualifying entrance requirements

School	Grade Group	School Level	Total Crashes within 1/4 mile	Household Income		Serious Injury and Fatal Crashes
Western Hills High School	High School	Grades 9-12	48	58182	2	4
Gilbert A. Dater Highschool	High School	Grades 7-12	34	58182	2	4
Oyler School	High School	Preschool - Grade 12	21	16731	1	1
Gamble Montessori	Elementary	Preschool - Grade 6	21	29895	1	1
Midway School	Elementary	Preschool - Grade 6	18	47796	1	1
Mt. Airy School	Elementary	Preschool - Grade 5	23	49188	1	1
Dater Montessori	Elementary	Preschool - Grade 6	26	50750	1	1
Ethel Mae Taylor Academy	Middle School	Grades 7-8	3	8956	1	0
LEAP Academy	Elementary	Preschool - Grade 7	1	24737	1	0
Roll Hill School	Elementary	Preschool - Grade 6	2	29895	1	0
Rees Evan Price Academy	Elementary	Preschool - Grade 6	26	31557	1	0
Roberts Academy	Elementary	Preschool - Grade 8	0	35813	1	0
Rising Stars at Cheviot/Westwood	Early Learning	Early Learning/Preschool	10	54609	2	0
Carson School	Elementary	Preschool - Grade 6	36	59185	2	0
Chase School	Elementary	Preschool - Grade 6	6	60662	2	0
Parker Woods Montessori School	Elementary	Preschool - Grade 6	2	66458	2	0
Gamble Montessori High School	High School	Grades 7-12	34	67465	2	0
Westwood School	Elementary	Kindergarten - Grade 5	28	67465	2	0
Sayler Park School	High School	Preschool - Grade 9	1	80114	3	0

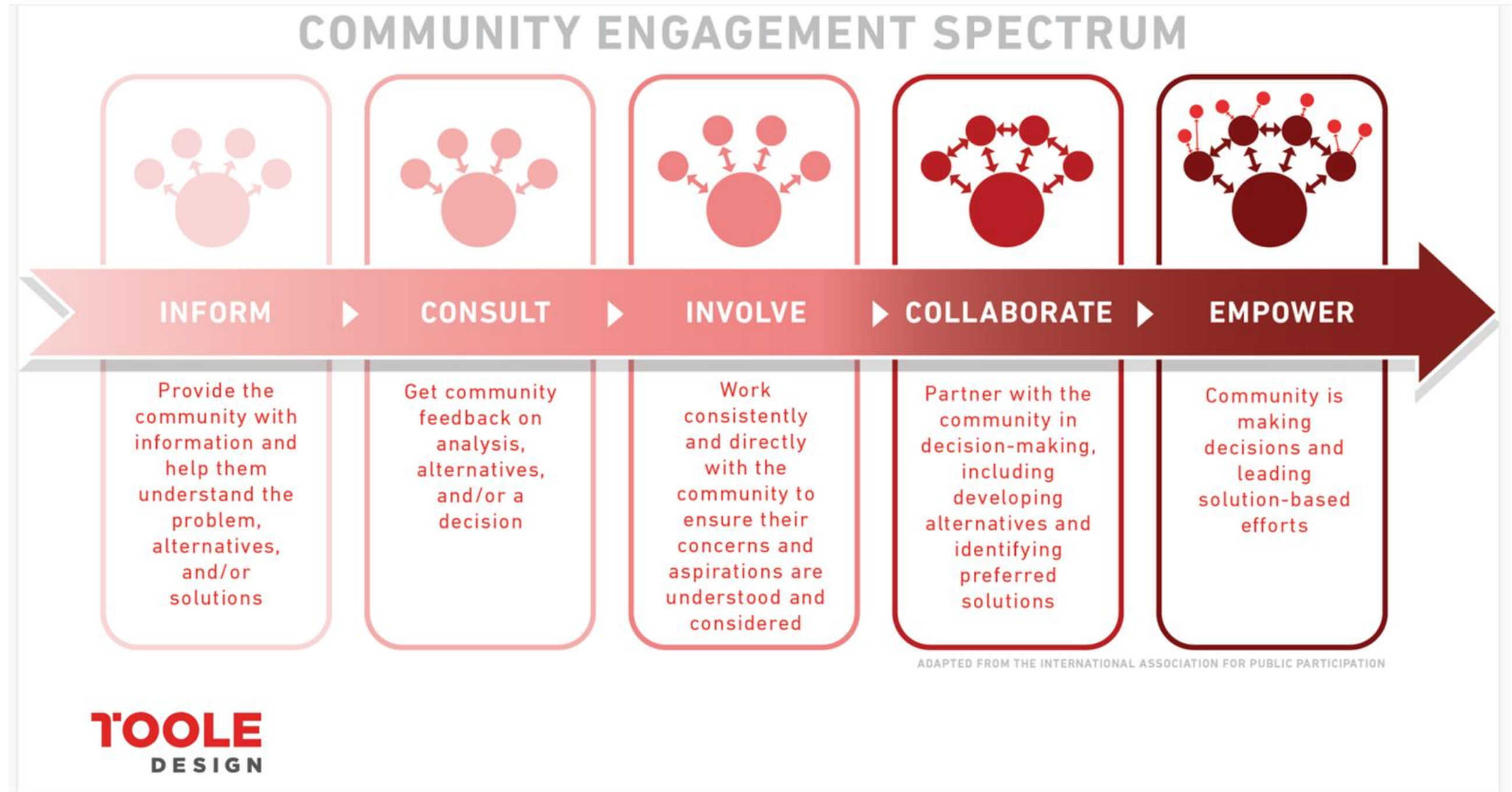
# Teams

- Quantitative Data Working Groups
- Engagement Working Groups



# Community Engagement Approach

- Surveys
- Mapping
- Walk audits
- Townhalls



# Next Steps

- Confirm advisory team members.
- Finalize school prioritization and commitment.
- Engagement efforts in fall 2026.
- Finalized plan before January 2027.

# Questions

Date: June 3, 2026

To: Mayor and Members of City Council 202601704  
From: Sheryl M. M. Long, City Manager  
Subject: Assessment of Need for Additional Lighting and Camera Infrastructure in  
Parks, Playgrounds, and Recreational Areas

---

### **Reference Document #202600233**

The Council at its session on January 22, 2026, referred the following item for review and report.

**We MOVE** that the Administration prepare a report within 30 days assessing the need for additional lighting and camera infrastructure across city parks, playgrounds and recreational areas owned by Cincinnati Parks and the Cincinnati Recreation Commission, with priority given to locations that have already experienced shootings and the five neighborhoods experiencing the highest levels of gun violence.

We further **MOVE** that the Administration prepare a separate subsequent report within 30 days of the initial report outlining the costs associated with installing, operating, and maintaining recommended lighting and camera improvements identified in the initial report, including any potential funding sources.

### **BACKGROUND**

The City of Cincinnati maintains an extensive network of parks, playgrounds, and recreational facilities through Cincinnati Parks and the Cincinnati Recreation Commission (CRC). These public spaces play an important role in supporting youth development, recreation, neighborhood cohesion, and community wellbeing. Safe and welcoming public spaces are also an important component of the City's broader violence reduction and prevention efforts.

Consistent with the City's violence reduction strategy, ACT for Cincy, the Administration conducted a place-based assessment focused on:

- neighborhoods experiencing the highest levels of gun violence;

- locations where shootings have previously occurred; and
- public recreational assets that serve youth and families.

The assessment reviewed existing lighting and camera infrastructure, analyzed environmental conditions surrounding parks and recreational assets, and identified areas where strategic infrastructure investments may improve both safety outcomes and perceptions of safety.

Priority analysis areas included Avondale, Over-the-Rhine, Walnut Hills, West End, and Winton Hills. Supporting maps identifying proposed lighting and camera locations are attached to this report.

## **CURRENT CONDITIONS**

The Administration coordinated across the Cincinnati Police Department (CPD), Cincinnati Parks, Cincinnati Recreation Commission (CRC), Department of Transportation & Engineering (DOTE), and Enterprise Technology Solutions (ETS) to assess current infrastructure conditions.

Cincinnati Parks recently completed a lighting inventory layer within CAGIS, which supported spatial analysis efforts related to lighting gaps and high-priority violence locations. Existing City lighting and camera infrastructure is currently concentrated primarily within the public right-of-way as a result of prior DOTE and CPD investments.

The assessment identified several operational and infrastructure challenges:

- some CRC and Parks properties currently lack sufficient electrical service or network connectivity to support additional lighting or camera infrastructure;
- existing camera systems are distributed across multiple departments and technology platforms; and
- the City does not currently maintain a fully centralized inventory of all operational public safety cameras across departments and facilities.

CPD has initiated ongoing work to better centralize and validate existing camera infrastructure, including site verification and maintenance assessments. CRC is also coordinating with Duke Energy to evaluate electrical access challenges at recreation sites where future infrastructure may be needed.

In addition to locations identified in this report, Cincinnati Parks identified several other park locations citywide that may benefit from future lighting improvements. However, this assessment prioritizes locations connected to current violence reduction strategies and areas experiencing elevated levels of gun violence.

## **PRIORITY LOCATIONS**

Based on violence-scoring analysis, existing environmental conditions, proximity to youth-serving assets, and current infrastructure gaps, the Administration identified the following priority locations for future lighting and camera investments:

### **Cincinnati Parks Locations**

- Natural Resources Building area
- Hauck Botanic Gardens
- Ezzard Charles Park
- Grant Park (*This location is set to be under construction for improvements later this year.*)

### **Cincinnati Recreation Commission Locations**

- Avondale Recreation Area
- Lincoln Recreation Center
- Queensgate Recreation Area
- New Findlay Recreation Area

Additional proposed lighting and camera locations are reflected in the attached neighborhood maps for Avondale, Over-the-Rhine, Walnut Hills, West End, and Winton Hills.

## **IMPLEMENTATION CONSIDERATIONS**

Implementation of additional lighting and camera infrastructure will require coordination across multiple City departments and external utility partners.

Key implementation considerations include:

- **Electrical Infrastructure:**  
Several proposed locations will require new or expanded electrical service in partnership with Duke Energy.
- **Connectivity & Network Access:**  
Some locations may utilize existing City network infrastructure, while others will require new connectivity solutions to support camera systems.
- **Maintenance & Operations:**

Long-term operational planning will be necessary to ensure infrastructure remains functional, monitored, and maintained over time.

- **Site Verification:**  
Additional field verification will be required to confirm final camera placement, lighting conditions, visibility considerations, and infrastructure feasibility.
- **Funding Strategy:**  
Future implementation will require identification of capital funding sources and phased deployment planning.

## **SUMMARY**

The Administration's assessment identified clear opportunities to improve lighting and camera infrastructure at select parks, playgrounds, and recreational areas located within neighborhoods experiencing elevated levels of gun violence.

While the City has existing infrastructure in portions of the public right-of-way, additional investments are needed within park and recreation spaces to support safe and welcoming public environments for residents, youth, and families.

Successful implementation will require:

- capital investment;
- continued cross-department coordination;
- infrastructure and connectivity improvements; and
- phased implementation informed by ongoing site verification and operational planning.

The Administration will continue coordinating across departments to refine infrastructure assessments, identify implementation priorities, and evaluate future funding opportunities.

cc: John S. Brazina, Assistant City Manager

Date: June 16, 2026

To: Members of the Youth & Human Services Committee  
 From: Sheryl M. M. Long, City Manager  
 Subject: Assessment of Need for Additional Lighting and Camera Infrastructure in Parks, Playgrounds, and Recreational Areas

202602280

**Reference Document #202600233**

The Council at its session on January 22, 2026, referred the following item for review and report.

**We MOVE** that the Administration prepare a report within 30 days assessing the need for additional lighting and camera infrastructure across city parks, playgrounds and recreational areas owned by Cincinnati Parks and the Cincinnati Recreation Commission, with priority given to locations that have already experienced shootings and the five neighborhoods experiencing the highest levels of gun violence.

**WE FURTHER MOVE** that the Administration prepare a separate subsequent report within 30 days of the initial report outlining the costs associated with installing, operating, and maintaining recommended lighting and camera improvements identified in the initial report, including any potential funding sources.

**Subsequent Report for Costs of Improvements**

This subsequent report outlines the costs associated with installation, operations and maintenance of the camera and lighting improvements in Avondale, Over-the-Rhine, Walnut Hills, West End, and Winton Hills. See attached map for locations.


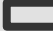




	Camera Infrastructure	Lighting	Annual Energy & Maintenance	Total
<b><u>Neighborhoods</u></b>				
Avondale	\$150,000	\$100,000	\$5,000	\$255,000
OTR	\$100,000	\$50,000	\$6,000	\$156,000
Walnut Hills	\$150,000	\$200,000	\$4,000	\$354,000
West End	\$200,000	\$650,000	\$7,000	\$857,000
Winton Hills	\$150,000	\$250,000	\$7,000	\$407,000
			<b>Overall Cost</b>	<b>\$2,029,000</b>

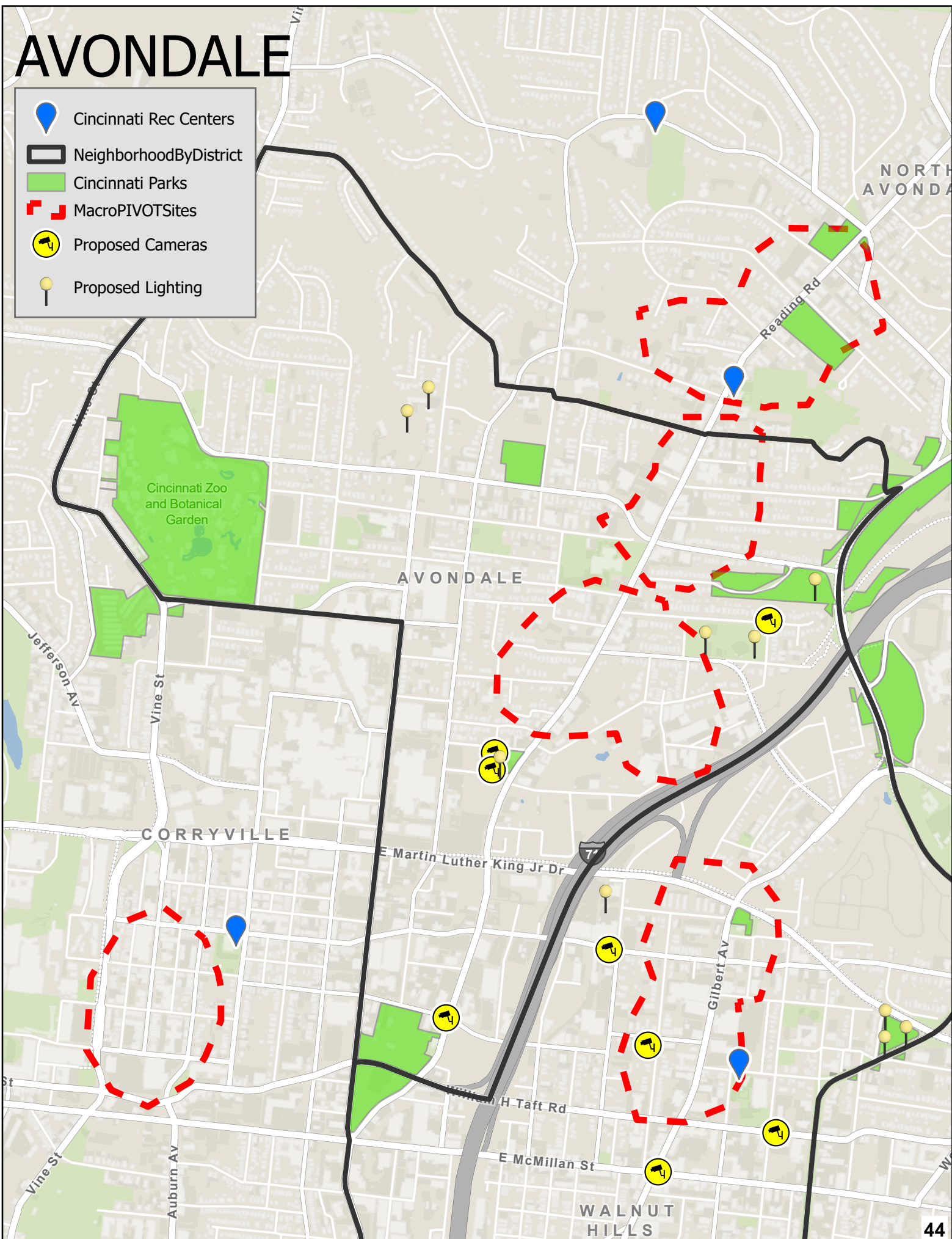
## **SUMMARY**

The Administration recommended \$1,000,000 in the FY27 budget to begin the improvements in the Avondale, Over-the-Rhine, Walnut Hills, West End, and Winton Hills neighborhood.


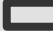




cc: John S. Brazina, Assistant City Manager

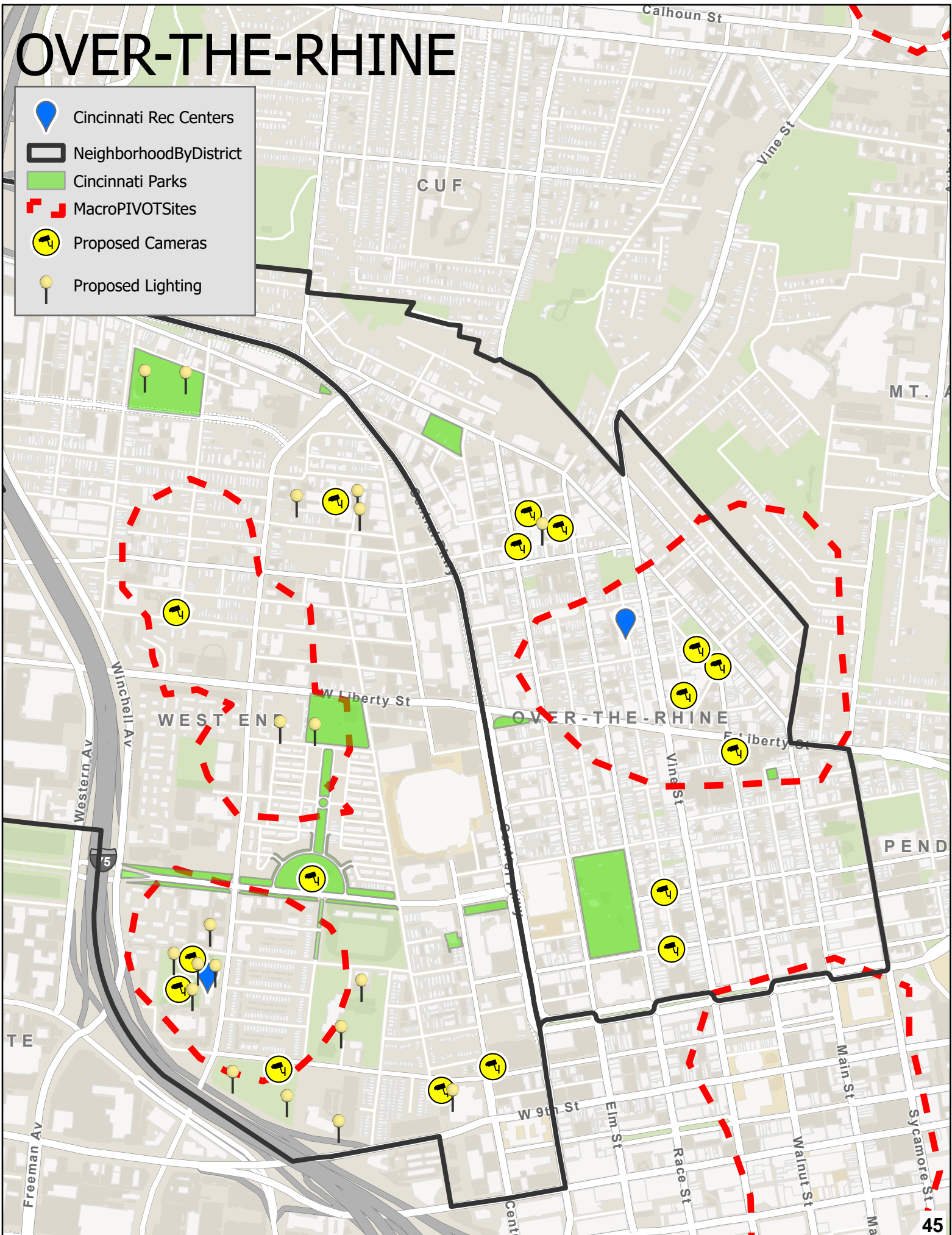
# AVONDALE

-  Cincinnati Rec Centers
-  NeighborhoodByDistrict
-  Cincinnati Parks
-  MacroPIVOTSites
-  Proposed Cameras
-  Proposed Lighting


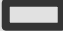






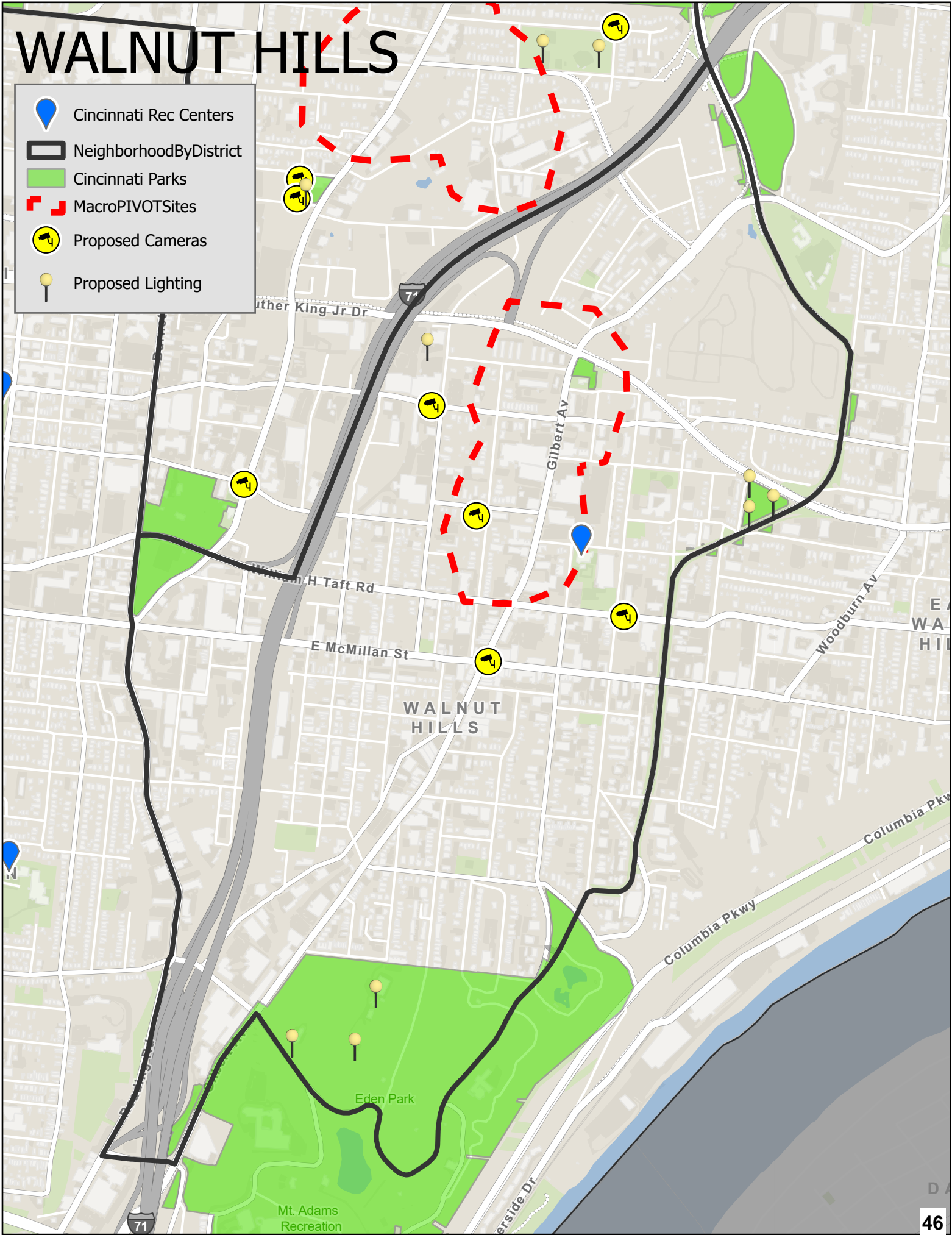
# OVER-THE-RHINE

-  Cincinnati Rec Centers
-  NeighborhoodByDistrict
-  Cincinnati Parks
-  MacroPIVOTSites
-  Proposed Cameras
-  Proposed Lighting


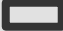






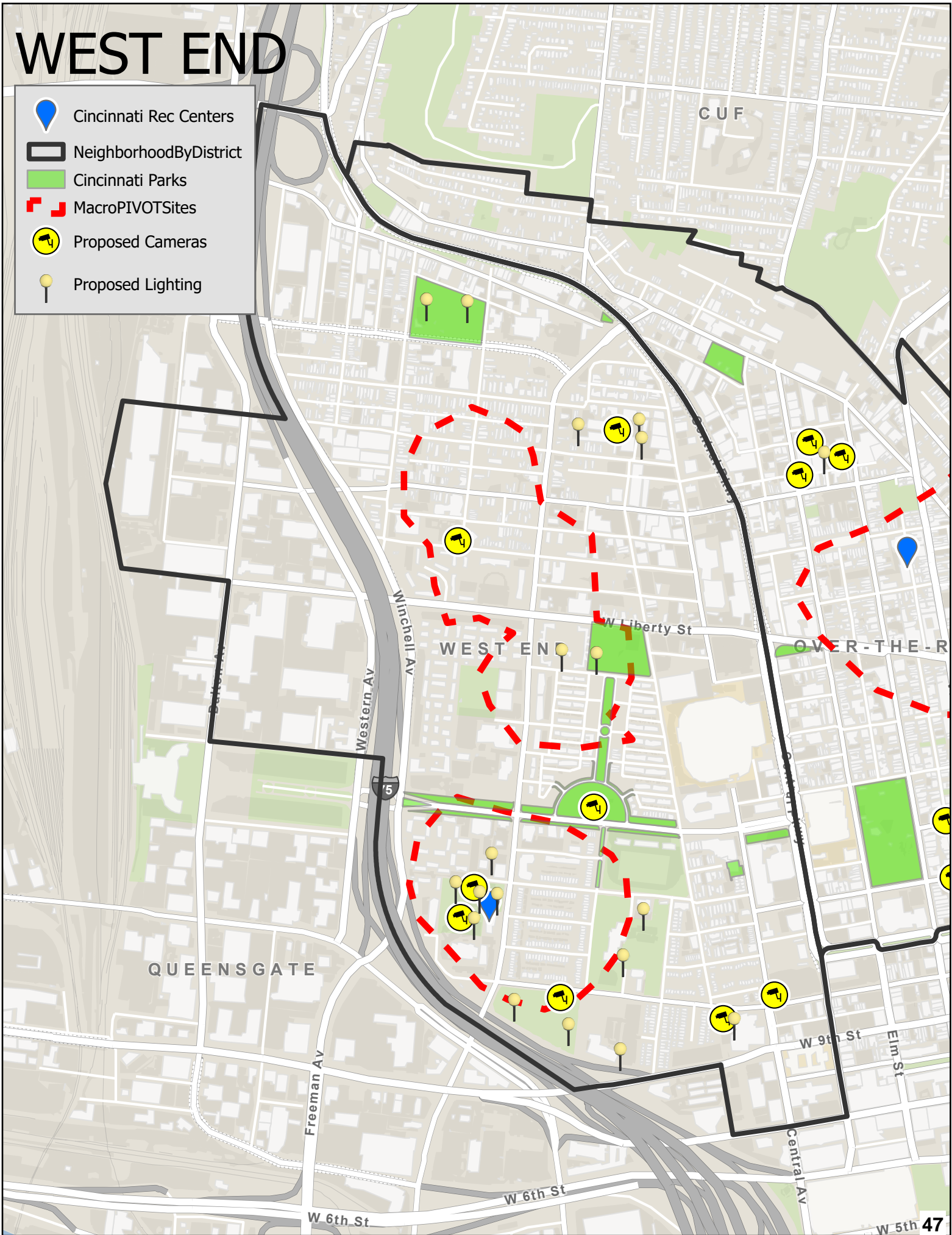
# WALNUT HILLS

-  Cincinnati Rec Centers
-  NeighborhoodByDistrict
-  Cincinnati Parks
-  MacroPIVOTSites
-  Proposed Cameras
-  Proposed Lighting


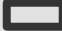






# WEST END

-  Cincinnati Rec Centers
-  NeighborhoodByDistrict
-  Cincinnati Parks
-  MacroPIVOTSites
-  Proposed Cameras
-  Proposed Lighting



# WINTON HILLS

-  Cincinnati Rec Centers
-  NeighborhoodByDistrict
-  Cincinnati Parks
-  MacroPIVOTSites
-  Proposed Cameras
-  Proposed Lighting

