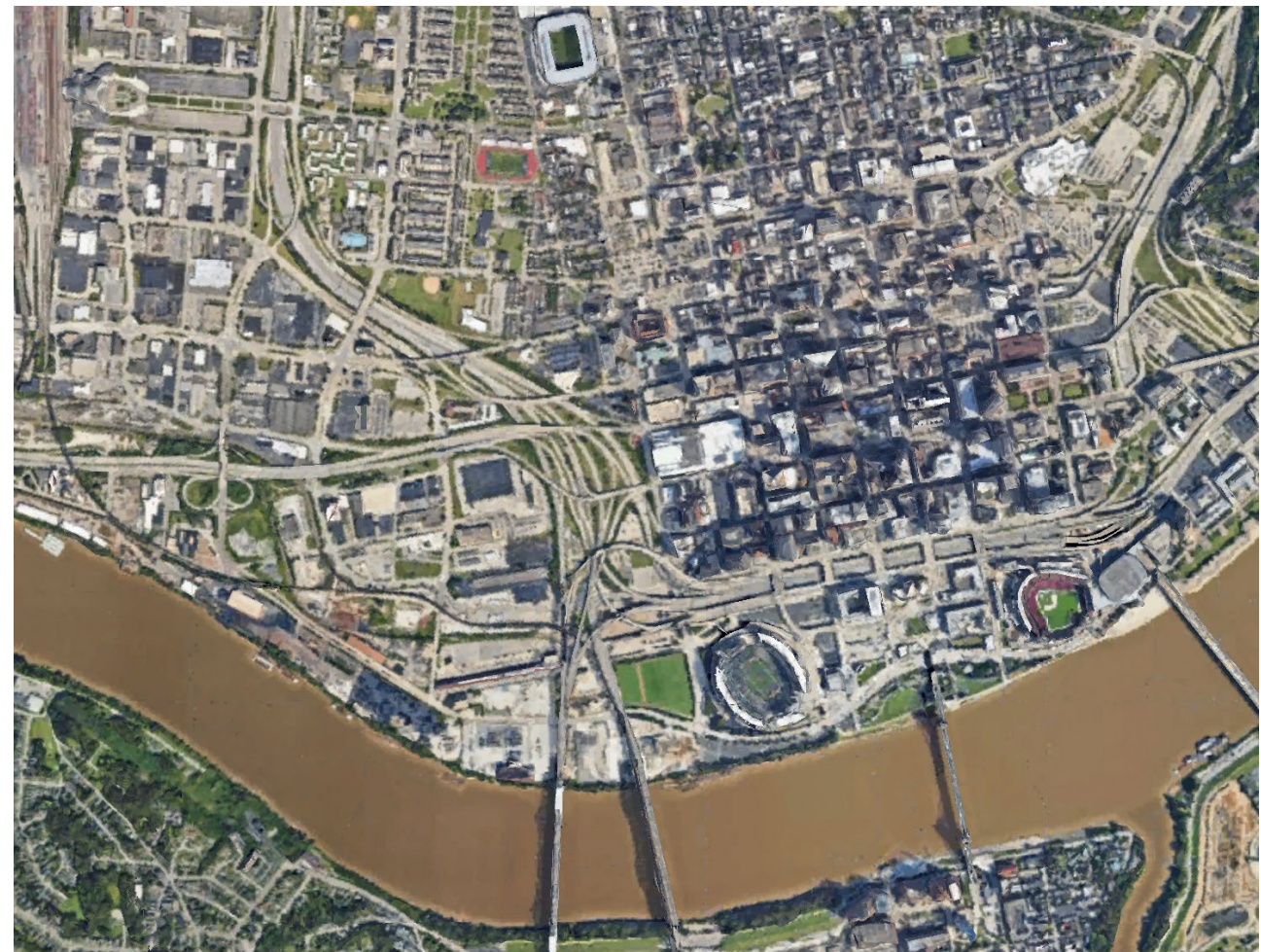


RECONNECTING

CINCINNATI WESTWARD



CINCINNATI - 1940



CINCINNATI - 2020

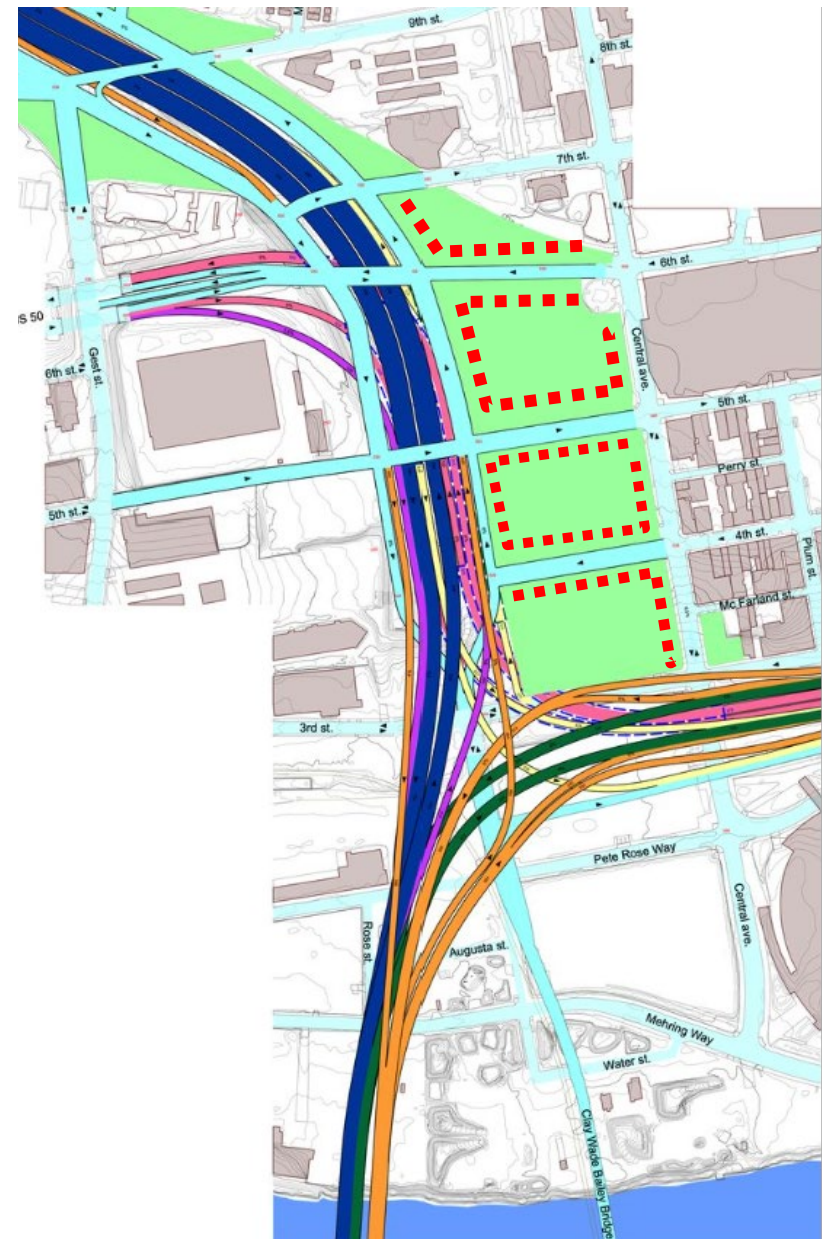
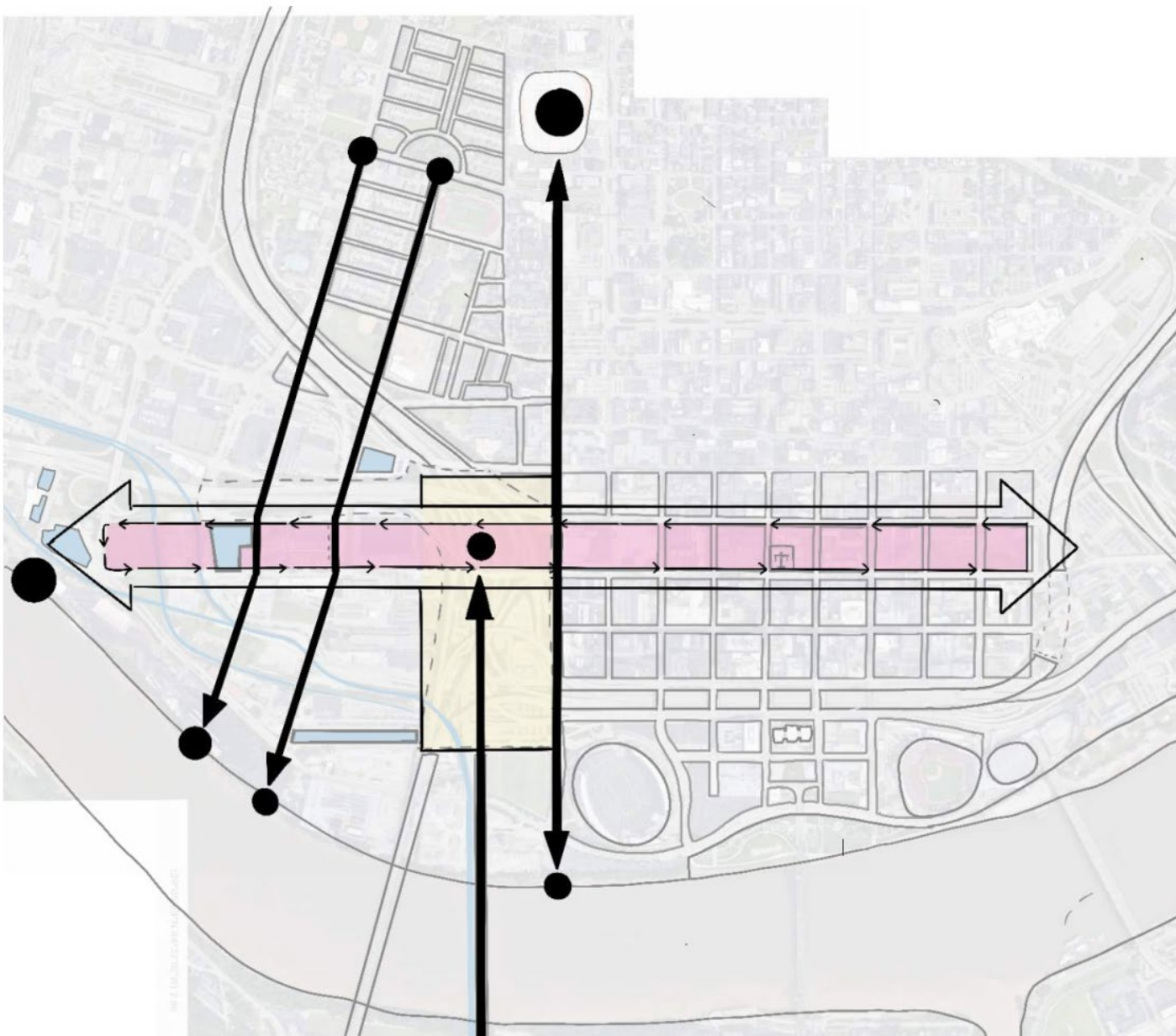
CURRENT VS 2013 ODOT PROPOSAL



CURRENT CONDITION



ODOT PROPOSAL, 2013



PROPOSED DIAGRAM & CONFIGURATION

1) Simplify Access & Navigation

2013 ODOT Proposal

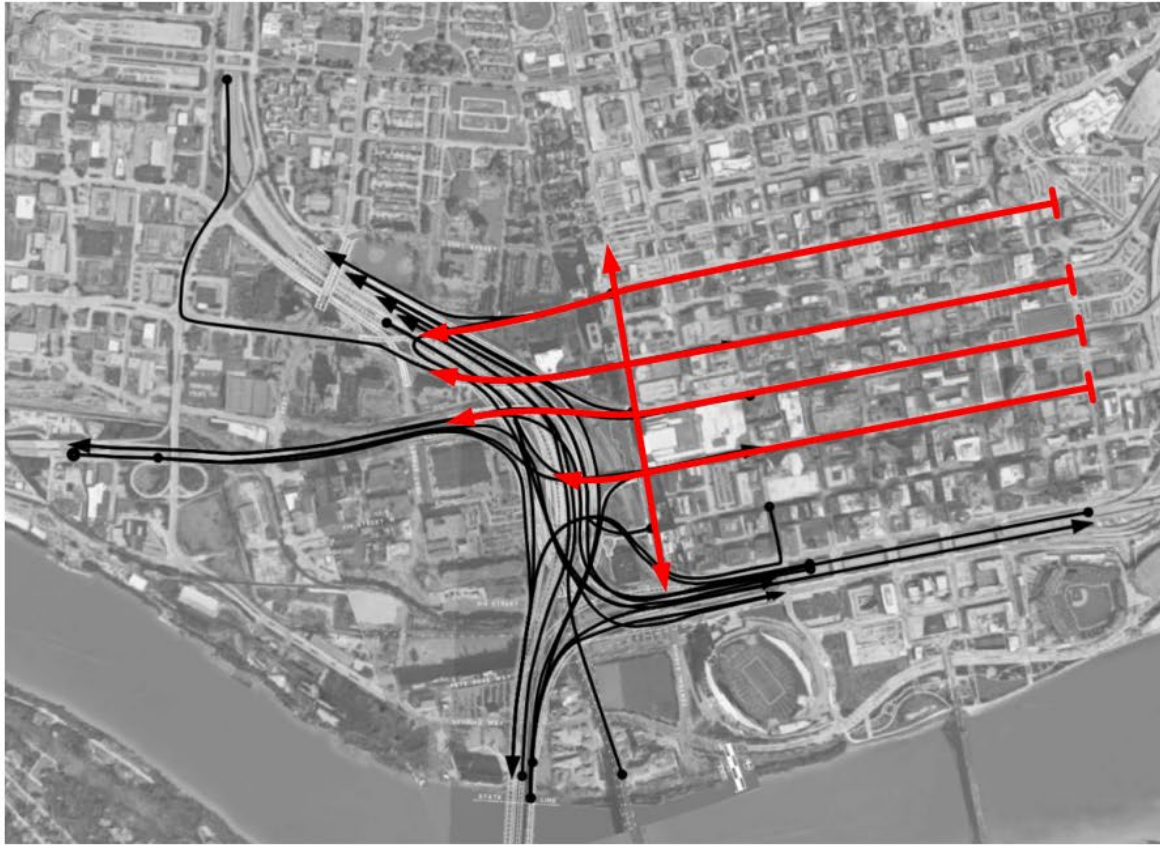


Reconnect Westway

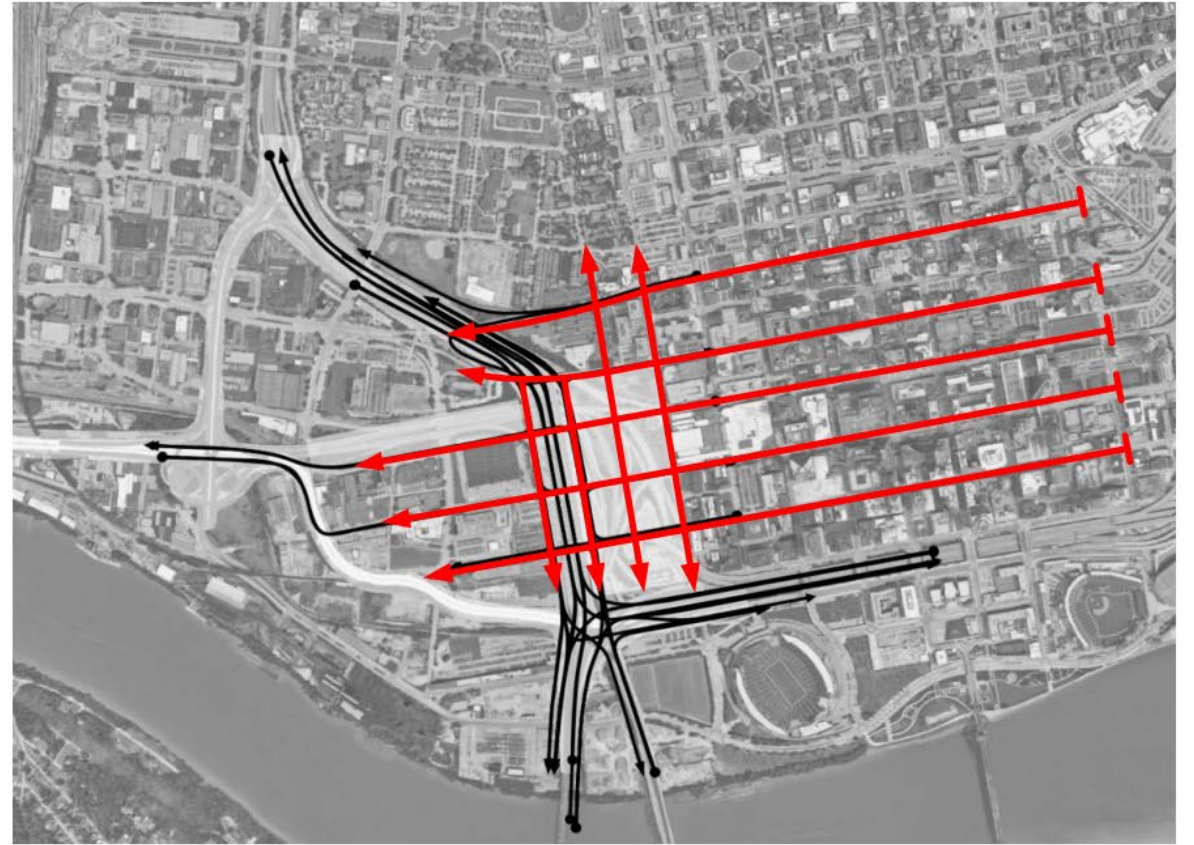


2) Reconnect Street Grid

2013 ODOT Proposal



Reconnect Westway



3) Recapture City Blocks

2013 ODOT Proposal



Reconnect Westway



4) Catalyze Future Opportunities

2013 ODOT Proposal



Reconnect Westway



Fulton Market Innovation District Chicago, IL

Approved by the Chicago Plan Commission in July 2014, the Fulton Market Innovation District plan outlined a vision to preserve existing jobs while accommodating private sector investments that reinforce the area's expanding role as an innovation-driven employment center.



"The Fulton Market community is where traditional and innovative businesses and buildings coexist in a dynamic downtown environment. The community is already a vital economic engine for the City, with a variety of companies, service providers, and quality-of-life amenities. Looking to the future, the area should continue to evolve as a desirable, functional, mixed-use and mixed-income neighborhood for workers, residents and visitors"

-Department of Planning Development



Midtown Atlanta, GA

"Today, the Midtown core is a thriving, 1.2 square mile mixed-use district in the heart of Atlanta, prized for its walkable, tree-lined streets linking the city's premier arts and cultural attractions, parks, restaurants, residents and major employers. Over the last two decades, the pace of new development in Midtown has been astonishing, with more than 60 major high-rise developments delivered."



EcoInnovation District Pittsburgh, PA



BASELINING UPTOWN PORTLAND SUSTAINABILITY INSTITUTE ECODISTRICT PERFORMANCE AREAS

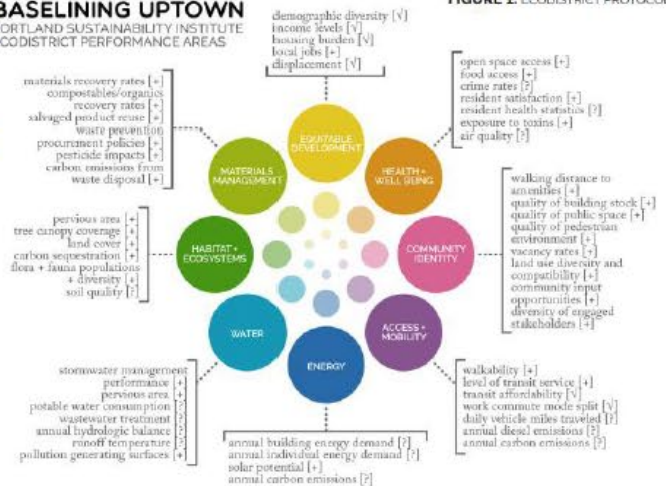


FIGURE 1: ECODISTRICT PROTOCOL

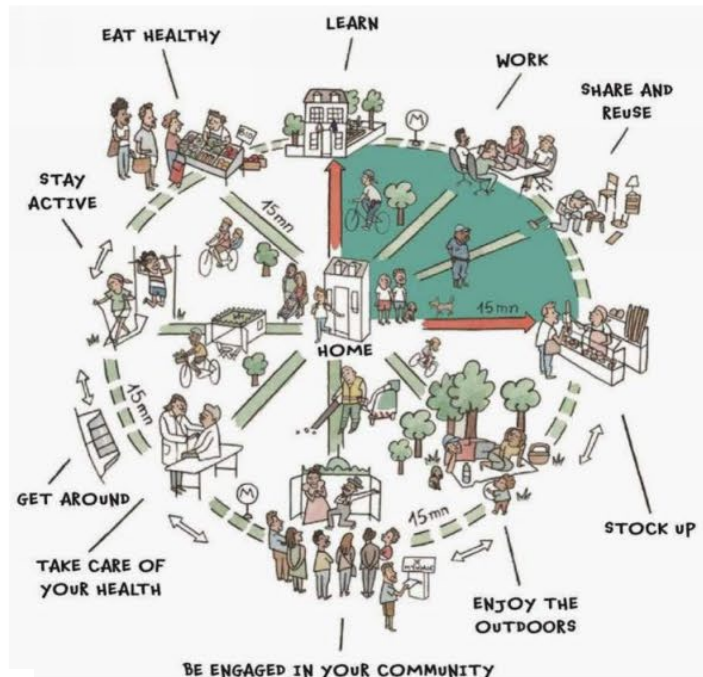
Fort Washington Way Cincinnati, OH



Pillars of Sustainability & Resilience

20 Minute Neighborhood

- Prioritize Active Transportation
- Complete Streets
- Dense Mixed-Use Development
- Strategically located civic amenities



Paris en Commun's "15-minute city" concept sketch. (Image credit: Ubique)

Enhanced Tree Canopy

- Tree-lined streets and trails for cooler active transportation
- Tree-filled parks that provide respite and a new set of lungs for the neighborhood
- Low Albedo and green roofs to reduce heat island effect



(Image credit: GREENLIVE)

Stormwater Management

- Bioswales along streets
- Daylighting streams
- Recreational ponds and wetlands for retention/detention
- Green Roofs



(Image credit: NACTO)

We have a once in a
century opportunity to
get this right.