



City of Cincinnati

801 Plum Street
Cincinnati, OH 45202

Agenda - Final

Climate, City Services & Infrastructure

Chairperson Meeka Owens
Vice Chair Ryan James
Councilmember Mark Jeffreys
Councilmember Seth Walsh

Tuesday, March 17, 2026

10:00 AM

Council Chambers, Room 300

PRESENTATION

KEEP CINCINNATI BEAUTIFUL/GREEN SCHOOL YARDS UPDATE

SPEAKERS

Kirsten Brademeyer, Education & Youth Programs Director, Keep Cincinnati Beautiful

Ty Wesselkamper, Safe & Clean Grant Coordinator, Keep Cincinnati Beautiful

Christopher Burkhardt, Chief Operating Officer, Cincinnati Public Schools

Cynthia Walters, Director of Green & Healthy Schools, Green Umbrella

AGENDA

PRESENTATION

1. [202601086](#) **PRESENTATION**, submitted by Councilmember Meeka Owens regarding a *Keep Cincinnati Beautiful/Green School Yards Update*.

Sponsors: Owens

Attachments: [Presentation](#)

MOTION

2. [202601065](#) **MOTION**, submitted by Councilmember Jeffreys, **WE MOVE** that the administration produce a report in the next 30 days on the following: Estimate the one-time cost to remove all blighted, broken parking meters (similar to the attached pictures) that are present across the city; Share any data on current parking revenue from those blighted, broken parking meters spots compared to the average parking revenue per spot. (STATEMENT ATTACHED)

Sponsors: Jeffreys

Attachments: [202601065](#)

ADJOURNMENT

Strategic Partnerships

for Greener Schools

KIRSTEN
BRADEMEYER
KEEP CINCINNATI
BEAUTIFUL

CHRIS
BURKHARDT
CINCINNATI
PUBLIC SCHOOLS

CYNTHIA
WALTERS
GREEN
UMBRELLA

TY
WESSELKAMPER
KEEP CINCINNATI
BEAUTIFUL





Agenda

INTRODUCTION

UPDATES FROM CPS

HISTORY OF GREEN SCHOOLYARDS

STRATEGIC PARTNERSHIPS FOR GREENER SCHOOLS

SAFE & CLEAN AND CITY SUPPORT

Chris Burkhardt

CHIEF OPERATING OFFICER
CINCINNATI PUBLIC SCHOOLS

CPS'S STRATEGIC VISION
FOR GREENER SCHOOLS



CPS Priorities

MOWING

- REDUCE MOWED AREAS
- USE SUSTAINABLE EQUIPMENT
- PRACTICE "CONSERVATION MOWING"
- CURTAIL WEEDS:

NATURAL BOUNDARIES

- NATURAL FENCE LINES
- NATURAL NOISE DEADENING

WATER CONSERVATION

- INSTALL WATER-WISE IRRIGATION
- INCORPORATE DROUGHT-TOLERANT PLANTS
- HARVEST RAINWATER
- MANAGE STORMWATER
- MULCHING
- SUSTAINABLE MULCHING

OUTDOOR LEARNING & PLAY

- OUTDOOR CLASSROOMS
- SCHOOL GARDENS
- PLAYGROUNDS
- WALKING TRAILS
- CONNECTING SCHOOL CAMPUSES

TREE CARE

- IDENTIFY TREES/SHRUBS
- PLANT APPROPRIATE TREES/SHRUBS
- ESTABLISH A TREE CARE PLAN

INTERNSHIPS

- ENGAGE STUDENTS IN PAID MAINTENANCE

2023 Green Cincinnati Plan Education Goals

1 100% OF PUBLIC SCHOOLS HAVE SAFE AND ACCESSIBLE OUTDOOR LEARNING SPACES BY 2028.

2 4,000 INDIVIDUALS TRAINED FOR GREEN ECONOMY JOBS BY 2028 (800/YEAR).



Green Schoolyards Timeline



CPS
OUTSIDE

2017



CHILDREN IN
NATURE
NETWORK

2022



GREEN
SCHOOLYARDS
ACTION
NETWORK

2023



20 CPS GREEN
SCHOOLYARD
IMPROVEMENTS

2022-24



1ST GREEN
SCHOOLYARDS
SUMMIT

2024



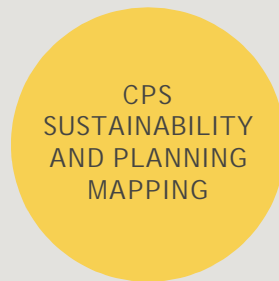
CHILDREN'S
OUTDOOR
BILL OF
RIGHTS

2024



STRATEGIC
PARTNERSHIPS
FOR GREENER
SCHOOLS

2025



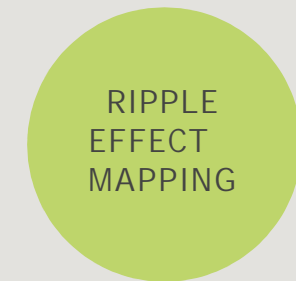
CPS
SUSTAINABILITY
AND PLANNING
MAPPING

2025



GREEN AND
HEALTHY
SCHOOLS

2025



RIPPLE
EFFECT
MAPPING

2025

Partners in the Green SchoolyardsSpace

BRICK GARDENS
CARDINAL LAND CONSERVANCY
CINCINNATI HEALTH DEPARTMENT
CINCINNATI OES
CINCINNATI PARKS
CINCINNATI PUBLIC SCHOOLS
CINCINNATI RECREATION COMMISSION
CINCINNATI ZOO
CIVIC GARDEN CENTER
CLC INSTITUTE
GREEN UMBRELLA

GROUNDWORK OHIO RIVER VALLEY
HAMILTON COUNTY CONSERVATION DISTRICT
IMAGO
ISAIAH 55 INC
KEEP CINCINNATI BEAUTIFUL
OSU EXTENSION
REDS COMMUNITY FUND
SPRING GROVE
TAKING ROOT
THE BEING PROJECT
UC FIELD OFFICE

Strategic Partnerships for Greener Schools

ALL CPS STUDENTS HAVE SAFE ACCESS TO AN OUTDOOR LEARNING SPACE

PARTNER RESOURCE-SHARING TO HELP FACILITATE MAINTAINING GREENSPACE ON SCHOOL CAMPUSES

EMBED WORK-BASED LEARNING AND INTERNSHIPS DEDICATED TO MAINTAINING GREENSPACE ON SCHOOL CAMPUSES

STRATEGIC PARTNERSHIPS FOR GREENER SCHOOLS

GREEN WORKFORCE
DEVELOPMENT

CPS SUMMER
INTERNS

DISTRICT
WELLNESS

FOOD & NUTRITION
CURRICULUM

GREEN ASSETS
MAPPING

TREE PLANTING,
CARE, AND MAPPING

All CPS students have safe access to an outdoor learning space

PARTNERS WORK COLLABORATIVELY WITH CPS TO EXPAND AND IMPROVE SCHOOLYARD GREENSPACES SO THAT STUDENTS CAN LEARN, PLAY, AND EXPLORE OUTDOORS.

KEY FOCUS AREAS

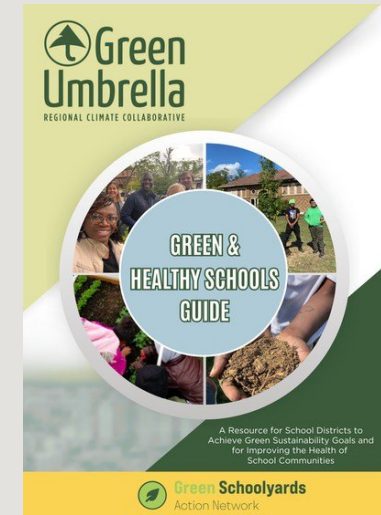
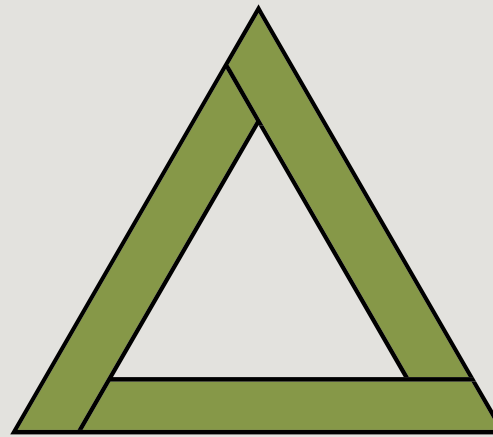
- GREENING SCHOOLYARDS AND UNDERUTILIZED CAMPUS SPACES
- DESIGNING SPACES FOR BOTH RECREATION AND LEARNING
- IMPROVING SAFETY, ACCESSIBILITY, AND SUPERVISION
- SUPPORTING EDUCATORS IN USING OUTDOOR SPACES FOR INSTRUCTION
- LONG-TERM STEWARDSHIP PLANS FOR EACH CAMPUS



Curriculum Instruction and Professional Development



Career Technical Education (CTE)



Outdoor Maintenance





GREENSPACE

trees, foliage,
orchard, pollinator
garden, trail, forest,
water feature



SCHOOL CAMPUS

parking lot,
playground, sports
facilities, indoor
structures



OUTDOOR LEARNING

food garden,
greenhouse,
naturescape, seating
and shade structures

Partner resource-sharing to help facilitate maintaining greenspace on school campuses

PARTNERS COLLABORATE TO ALIGN TOOLS, TRAINING, FUNDING, AND VOLUNTEER CAPACITY SO THAT GREENSPACES ON SCHOOL CAMPUSES REMAIN HEALTHY AND FUNCTIONAL.

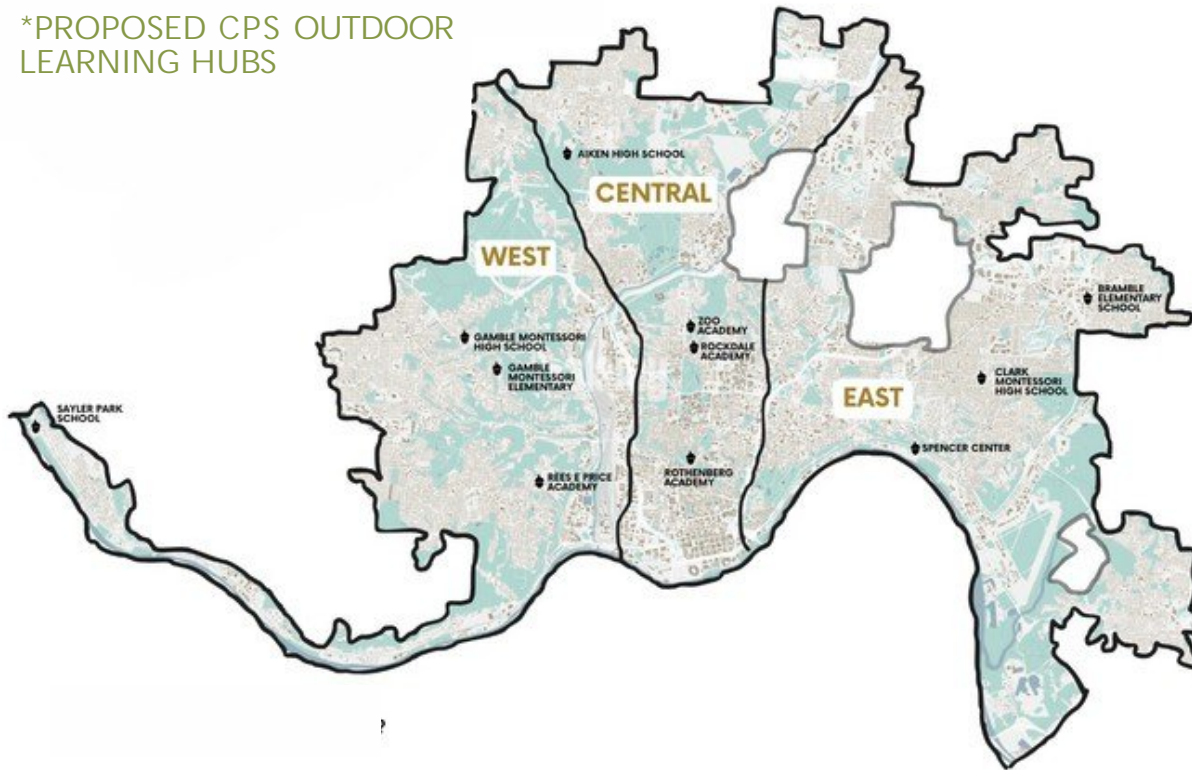
KEY FOCUS AREAS

- SHARED TOOLS, MATERIALS, AND MAINTENANCE RESOURCES
- PARTNER COORDINATION TO AVOID DUPLICATION OF EFFORTS
- TRAINING FOR SCHOOL STAFF, VOLUNTEERS, AND STUDENTS
- ALIGNMENT OF FUNDRAISING STRATEGIES TO SUPPORT INSTALLATION AND LONG-TERM MAINTENANCE OF GREENSPACES



Outdoor Learning Access at CPS

*PROPOSED CPS OUTDOOR LEARNING HUBS



CURRENTLY, STUDENTS AT 60 CPS SCHOOLS HAVE SOME SORT OF ACCESS TO OUTDOOR LEARNING. THIS INCLUDES UNDER 10 MINUTE WALKS TO PARKS. IT DOES NOT MEAN THAT 60 CPS SCHOOLS HAVE SOME SORT OF OUTDOOR LEARNING FEATURE.

RIPPLE Effect

OF CINCINNATI'S
GREEN SCHOOLYARDS
ACTION NETWORK

CHALLENGES & BARRIERS



PARTNERSHIPS & COLLABORATION



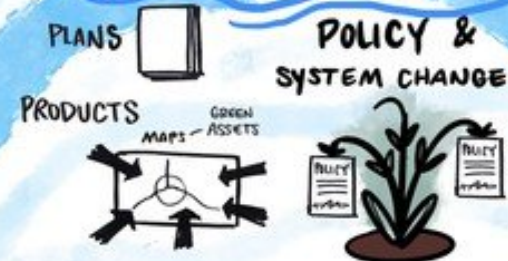
AGRICULTURE PROGRAMS



YOUTH LEADERSHIP & JUSTICE



GRASS ROOT EFFORTS



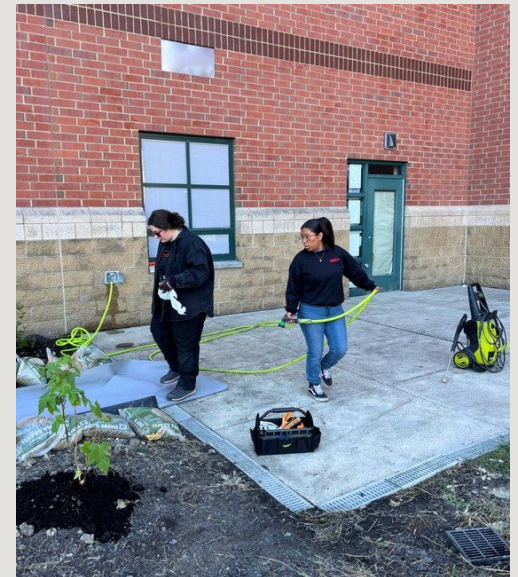
DRAWN/VERSATION

Embed work-based learning and internships dedicated to maintaining greenspace on school campuses

PARTNERS COLLABORATE WITH CPS TO EMBED WORK-BASED LEARNING, INTERNSHIPS, AND YOUTH EMPLOYMENT OPPORTUNITIES RELATED TO GREENSPACE MAINTENANCE, ENVIRONMENTAL STEWARDSHIP, AND URBAN ECOLOGY.

KEY FOCUS AREAS

- STUDENT INTERNSHIPS AND PAID WORK OPPORTUNITIES
- INTEGRATION WITH CAREER PATHWAYS
- SCHOOL-BASED EXPERIENTIAL LEARNING
- MENTORSHIP AND WORKFORCE SKILL DEVELOPMENT



City Investment in Greener Schools Through Safe & Clean

\$224,703 INVESTED IN CPS GREENSPACE AND ENVIRONMENTAL PROJECTS ACROSS 10 FUNDED PROJECTS AT 13 CPS CAMPUSES



Participants in Price Hill Safety CAT (Safe & Clean) paint a mural for The Being Project's (Safe & Clean, Seeds of Change) "Kindness Corner" at Rees E Price Academy

Gamble Montessori Elementary

THE FOREST TRAIL INITIATIVE: ENVISIONING A COMMUNITY CONNECTION WITH NATURE

Imagine a space where the community can engage with nature, learn collaboratively, and thrive—physically, emotionally, and socially. The Forest Trail will protect natural habitats, establish accessible pathways, and offer opportunities for outdoor education, family involvement, and conservation efforts. The Forest Trail will act as a vital link for our community, creating safe, walkable routes that enable students and families to confidently walk or bike to school.

Asia Sheanshang,
Gamble Montessori Resource Coordinator

\$19,470 in S&C funding

EXISTING PARTNERS

Keep Cincinnati Beautiful, Cardinal Land Conservancy, Gamble High School, Imago Westwood Works, Spring Grove Cemetery, Rotary Club, Green Umbrella, GME PTO, CRC, Local volunteers and community groups



Green Schoolyards as Public Land

66 SCHOOLS | 35,000 STUDENTS | 900+ ACRES OF LAND

CPS CAMPUSES REPRESENT ONE OF CINCINNATI'S LARGEST PORTFOLIOS OF PUBLIC LAND AND AN OPPORTUNITY TO EXPAND CLIMATE INFRASTRUCTURE AND OUTDOOR LEARNING ACROSS THE CITY.

WHY THIS MATTERS FOR CINCINNATI

- CLIMATE RESILIENCE
 - TREES AND GREENSPACE HELP REDUCE URBAN HEAT AND MANAGE STORMWATER.
- NEIGHBORHOOD ACCESS TO NATURE
 - SCHOOLYARDS ARE OFTEN THE MOST ACCESSIBLE GREENSPACE IN MANY NEIGHBORHOODS.
- STUDENT LEARNING & HEALTH
 - OUTDOOR SPACES SUPPORT ENVIRONMENTAL EDUCATION AND STUDENT WELLBEING.
- YOUTH WORKFORCE PATHWAYS
 - GREENSPACE STEWARDSHIP CONNECTS STUDENTS TO CAREERS IN ENVIRONMENTAL AND GREEN INFRASTRUCTURE FIELDS.

BIGGEST CHALLENGE: MORE THAN 30 ORGANIZATIONS ARE WORKING IN THIS SPACE, BUT COORDINATION ACROSS PARTNERS, CPS, AND THE CITY IS LIMITED TO PARTIAL SUPPORT FROM GREEN UMBRELLA AND KCB STAFF (CYNTHIA AND KIRSTEN)

Strategic Partnerships for Greener Schools Liaison

A DEDICATED ROLE TO COORDINATE COLLABORATION BETWEEN:

- CINCINNATI PUBLIC SCHOOLS
- PARTNER ORGANIZATIONS
- CITY DEPARTMENTS

KEY RESPONSIBILITIES

- ALIGN PARTNER RESOURCES AND PROGRAMMING ACROSS CPS CAMPUSES
- COORDINATE MAINTENANCE STRATEGIES FOR SCHOOL GREENSPACES
- ALIGN FUNDRAISING AND GRANT STRATEGIES
- SUPPORT WORK-BASED LEARNING AND INTERNSHIPS FOR STUDENTS
- MAXIMIZE IMPACT OF EXISTING CITY INVESTMENTS (INCLUDING SAFE & CLEAN)

OUTCOME

STRONGER PARTNERSHIPS, MORE EFFECTIVE USE OF PUBLIC LAND, AND GREATER IMPACT FOR CINCINNATI STUDENTS AND NEIGHBORHOODS.



2026010265

Mark Jeffreys
Councilmember

Motion: Eliminating Blighted Parking Meters Throughout Cincinnati

March 9, 2026

WE MOVE that the administration produce a report in the next 30 days on the following:

- Estimate the one-time cost to remove all blighted, broken parking meters (similar to the attached pictures) that are present across the city;
- Share any data on current parking revenue from those blighted, broken parking meters spots compared to the average parking revenue per spot.

STATEMENT

Blighted and broken parking meters throughout the city create confusion for drivers, reduce parking turnover, and can lead to unnecessary disputes or fines. When meters are visibly damaged or neglected, they also contribute to the perception of urban neglect, which can discourage visitors, hurt nearby businesses, and undermine pride in the community. Removing them is a key step in reducing blight in the City of Cincinnati.

Councilmember Mark Jeffreys

Examples of Blighted Parking Meters



1200

BS

CCSI

ZB.