

Hunger, Healing, and Hope: A Food System Approach to Community Safety

Shannon Carr, Michael Lugo, & Carley Riley
September 23, 2025





“Create sustainable change that improves food security to reduce gun violence.”

14 Partners Funded thru Impact Award



Partner	Funding Amount
Cincinnati Children's Hospital	\$41,050
Closing the Health Gap	\$10,000
Findlay Market	\$45,250
Feed the Soul	\$65,000
Greater Cincinnati Resilience Coalition	\$40,000
Green Umbrella	\$20,000
Isaiah 55, Inc	\$140,000
La Soupe	\$110,000
Lord's Gym	\$35,000
Love in Action	\$20,000
Produce Rx	\$116,700
Urban Farming Initiative	\$130,000
Verge Monarch	\$12,000
Whole Again	\$15,000
TOTAL	\$800,000

>30 Engaged Partners

Neighborhood-based partners (7+)

- Avondale Community Council
- East Price Hill Neighborhood Leadership Team
- North OTR Beautification/Dignification Action Team
- The Community Builders
- Villages at Roll Hill Community Council
- West End Market
- Winton Hills Community Council

Food organization partners (10)

- Cincinnati Public Schools
- Feed the Soul
- Findlay Market
- Isaiah 55
- La Soupe
- Lord's Gym
- Ohio State University Extension Office
- Produce Perks Midwest
- Urban Farming Initiative
- Whole Again

Community-based learning networks (3)

- System to Achieve Food Equity (SAFE)
- Community Safety Learning Collaborative
- Neighborhood Changemakers Network

Media production (1)

- Verge Monarch

Beautification and dignification partners (2)

- Cincinnati Zoo & Botanical Gardens
- Keep Cincinnati Beautiful

Trauma-informed resilience training and support (2)

- Greater Cincinnati Resilience Coalition
- Love in Action

Data partners (3)

- 84.51°
- CCHMC Child Health Equity Center
- UC Social Innovation Collaborative

Health partners (3)

- CCHMC
- UC Health
- Closing the Health Gap

Policy and systems change partners (3)

- 513 Alliance
- All-In Cincinnati
- Green Umbrella

Youth-engaged organization partners (3)

- Cincinnati Public Schools
- Hamilton County Juvenile Court
- Just Choice



Our Aims

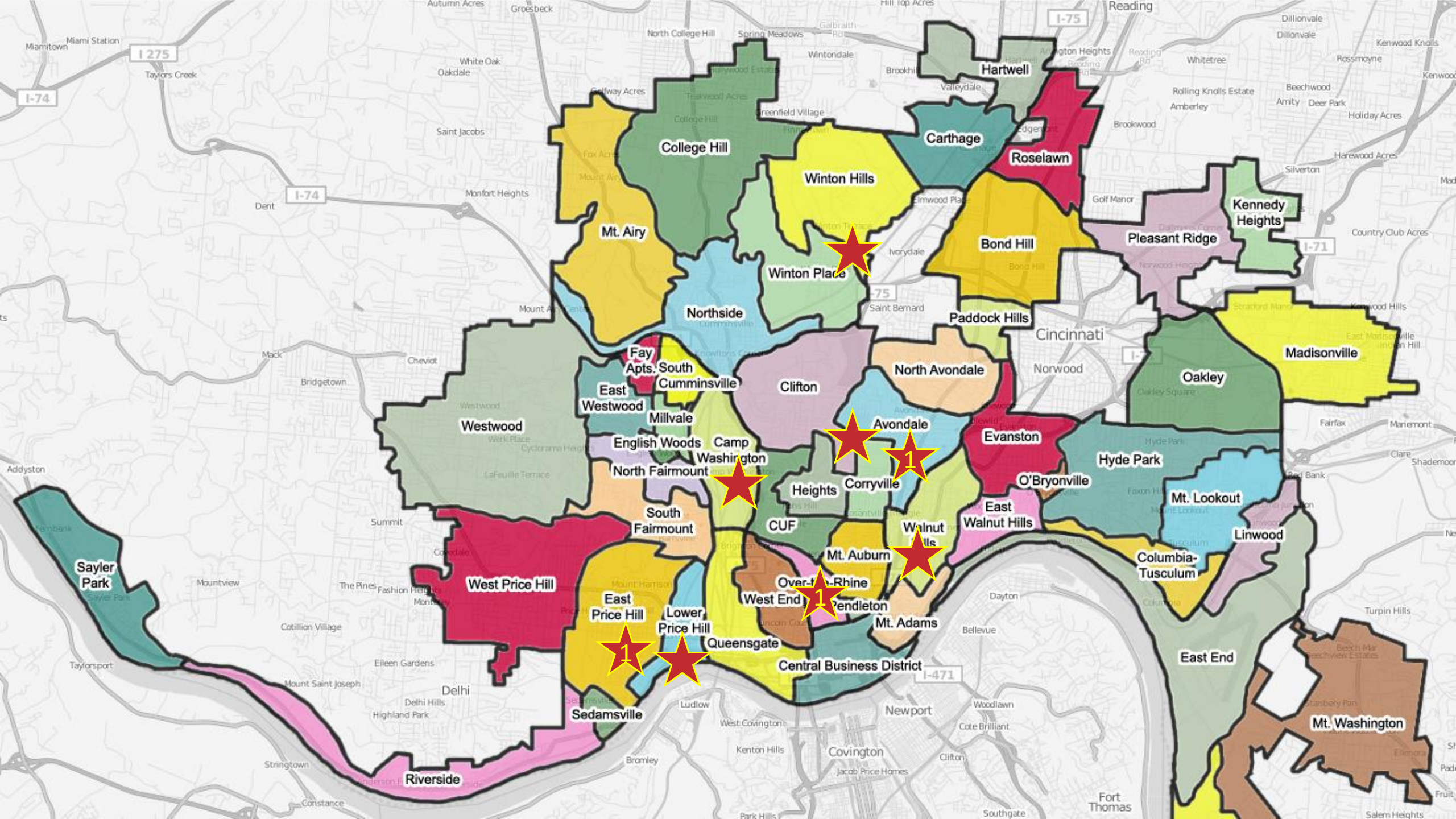
1. Establish a vibrant network of neighborhood-designed and -led food resource hubs, connected with community-operated urban farm sites, embedded in high-risk neighborhoods
2. Focus on three special populations: firearm injury survivors, system-involved youth, and public-school students
3. Leverage this highly collaborative effort for city-wide system and narrative change



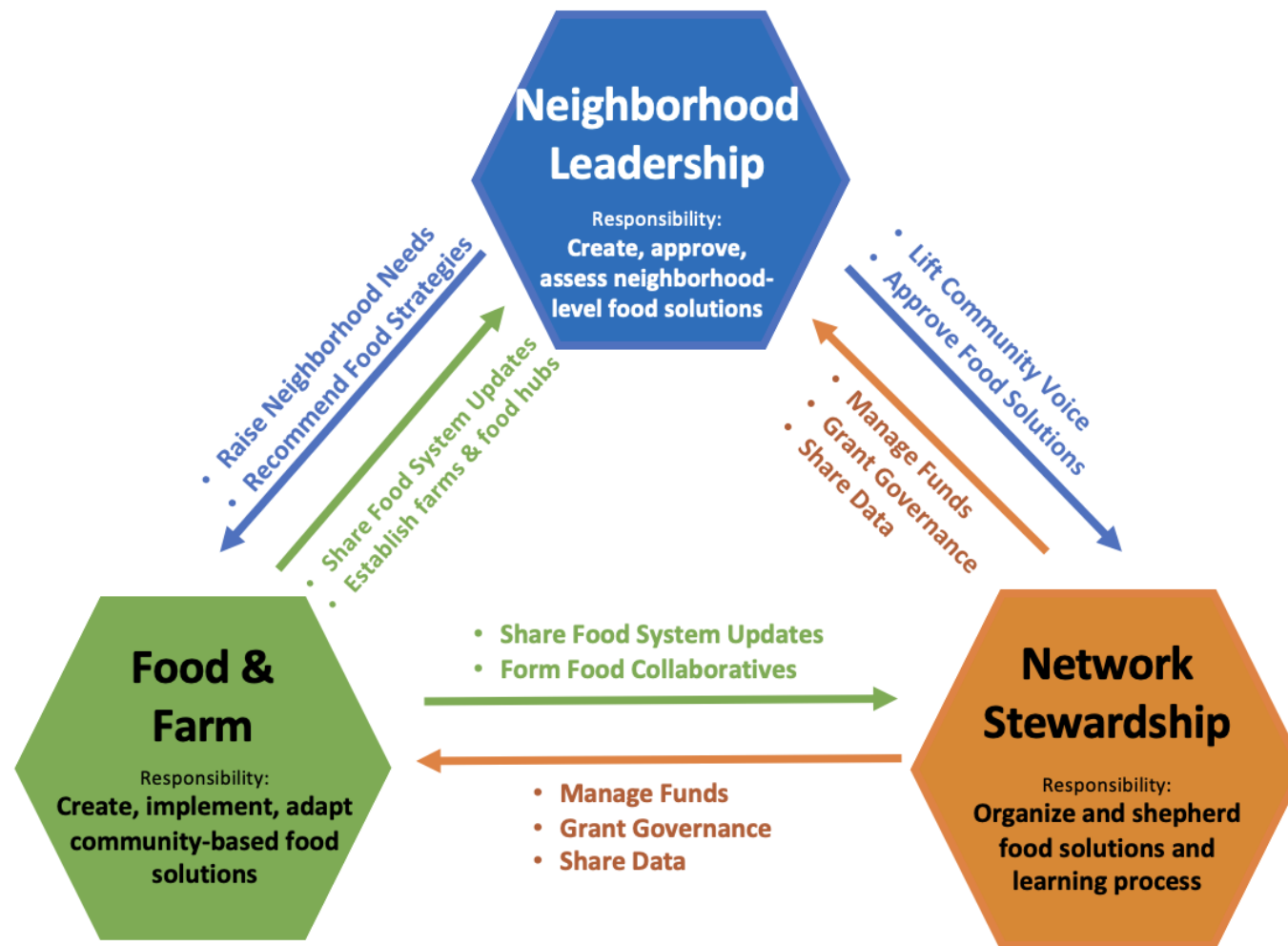
Urban Farm



Neighborhood Hubs



Network Structure



Beautification and Dignification Partners

Trauma-Informed Resiliency Training and Support

Data and Media Production Partners

Youth Engagement Organizations

Policy and System Change Partners

Neighborhood Leadership

Responsibility:
**Create, approve,
assess neighborhood-
level food solutions**

Ensure that community members and partners within each of the neighborhood network hubs are decision-makers across the project

Food & Farm

Responsibility:
**Create, implement, adapt
community-based food
solutions**

Provide free urban farming support, rescue, and affordable food—including fresh produce and freshly frozen prepared meals— along with food-related education, supplies, training, and connection to public nutrition assistance programs

Contribute to the design, build, function, and growth of each neighborhood network hub

Network Stewardship

Responsibility:
**Organize and shepherd
food solutions and
learning process**

Support learning system activities with supports for community engagement, data, project management, and systems improvement

Beautification and Dignification Partners

Contribute horticultural expertise to support beautification, dignification, and revitalization efforts

Trauma-Informed Resiliency Training and Support

Ensure the design and function of the neighborhood network hub incorporates trauma-informed care principles and practices and provides trauma-informed care interventions

Data and Media Production Partners

Provide data support to aid in evaluation and promote social innovation through a public-facing platform

Joint development of a media-driven strategy to use art, media, and storytelling to drive a narrative shift

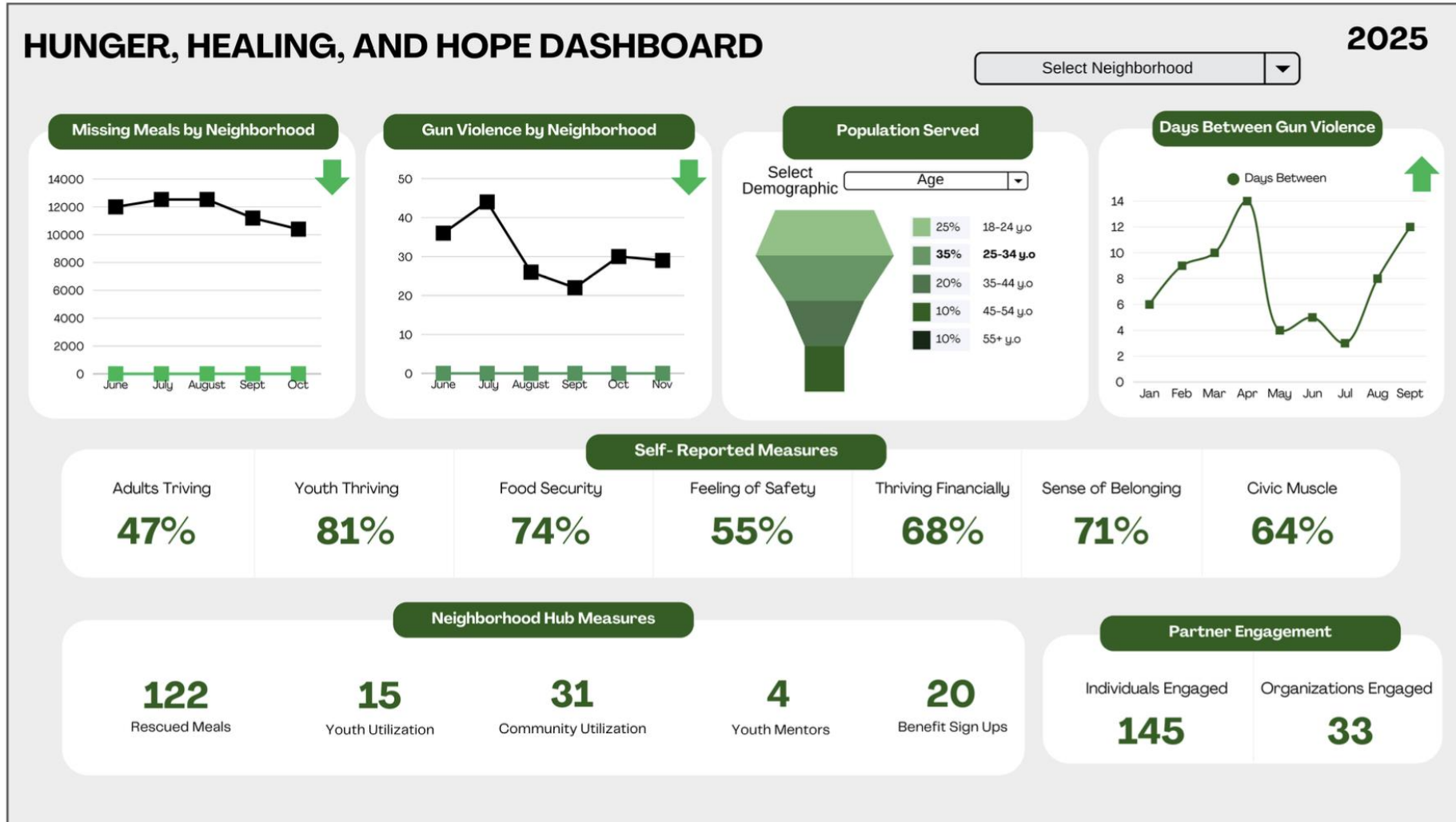
Youth Engagement Organizations

Establish a connection to mentorship and youth support, while also ensuring the youth voice is incorporated into the design and operation of the neighborhood network hubs

Policy and System Change Partners

Provide support to help identify and overcome policy and other systems-level barriers to neighborhood network

Data-Informed Approach



Process and Outcome Metrics

Outcome and process measures by type, including source and frequency			
Measure Type	Measure	Data Source	Frequency
Outcome Measure (Food insecurity)	▪ Meal gap, for city and by neighborhood	SAFE	Monthly
	▪ Food security rates, for city and by neighborhood	CCHMC-Gallup partnership	Quarterly
Outcome Measure (Gun violence)	▪ # gun violence incidents, for city and by neighborhood ▪ # gun violence incidents with youth, for city and by neighborhood ▪ Days between gun violence incidents	Community Safety Learning Collaborative	Monthly
Outcome Measure (Other, Adult)	▪ % adults who are Thriving, Struggling, Suffering (city, neighborhood) ▪ % adults who are hopeful (city, neighborhood) ▪ % adults who feel safe in community (city, neighborhood) ▪ % adults with sense of belonging in community (city, neighborhood) ▪ % adults with pride in their community (city, neighborhood)	CCHMC-Gallup partnership	Quarterly
Outcome Measure (Other, Youth)	▪ % youth reported by parents to be Thriving, Struggling Suffering (city, neighborhood) ▪ % youth reported by parents to have mentor who encourages their development (city, neighborhood) ▪ % youth reported by parents to feel like they belong in their community (city, neighborhood) ▪ % youth reported by parents to never go to bed hungry (city, neighborhood)	CCHMC-Gallup partnership	Quarterly
Process Measures (Food insecurity)	▪ # people served (overall, neighborhood, intervention) ▪ # meals provided (overall, neighborhood, intervention) ▪ Quantity fresh produce (overall, neighborhood, intervention) ▪ Quantity food rescued (overall, category) ▪ # cooking supplies provided (overall, neighborhood) ▪ # gardening supplies provided (overall, neighborhood) ▪ # eligible participants who enroll in SNAP (overall, neighborhood) ▪ # eligible participants who enroll in WIC (overall, neighborhood) ▪ # firearm injury patients delivered food (overall, neighborhood) ▪ # eligible firearm injury patients who enroll in SNAP/WIC (overall, neighborhood) ▪ # system-involved youth provided food (overall, neighborhood) ▪ # eligible system-involved youth who enroll in SNAP (overall, neighborhood) ▪ Qualitative data on impacts of Hub (overall, neighborhood) ▪ Quantitative data on psychological stress (neighborhood, intervention) ▪ Perceived accessibility to Hub (overall, neighborhood) ▪ # minutes via public transport to/from food access points (overall, neighborhood)	SAFE	Monthly
Process Measures (Gun Violence)	▪ # youth engaged in Hub ▪ # youth employed/trained by Hub ▪ # youth participating in events/programs ▪ # youth report feeling comfortable at Hub ▪ # system-involved youth who: ○ Receive non-food-related benefits ○ Receive mentorship ○ Receive training ○ Obtain employment ○ Engage in social activities/events	SAFE	Monthly
Process Measures (Neighborhood Hub Network)	▪ # active Neighborhood Hubs ▪ # events/programs (neighborhood, category) ▪ # attend events (neighborhood, category) ▪ # participate in programs (overall, neighborhood) ▪ # engaged in Neighborhood Hub Network by Activation Level* (overall, neighborhood) ▪ Network maturity, measured by Community Learning System Maturity Matrix (overall, by domain**) <p>*Activation Levels: Ownership, Contribution, Participation, and Awareness **Domains include (1) Continuous Learning & Improvement, (2) Data for All, (3) Distributed Leadership & Power, (4) Equity, (5) Relationship Building & Co-production, (6) Shared Governance, (7) Sustainability, (8) Systems Thinking</p>	SAFE	Quarterly

Priorities: 0-4 months



IMPACT AWARD

- Confirm locations for initial hubs and urban farm sites
- Prioritize development of site-specific teams and work towards Aims
- Create publicly available data platforms for Neighborhood Hubs
- Develop the strategy for city-wide system and narrative change

Thank you.

