

Rapid Run and Dunham: Game of the Goose RRAD: GOT Goose

Proposal for an art installation in West Price Hill

Lead Artist
Mary Anne Cowgill
cowguerl@gmail.com

Project Manager
Price Hill Will
Samantha Conover
Samantha@pricehillwill.org



The goal of this art installation is to connect, promote and enhance the recreational spaces of Rapid Run Park and Dunham Recreation Complex in West Price Hill

We propose to do this by connecting the parks with a quest, The Game of the Goose. The origin of this game is not certain, but one theory is that it began as a pilgrimage map in 13th Century Spain. The Game of the Goose was the first mass produced board game that was played by aristocracy and common folk. It is considered the prototype for many well-known games, such as Candy Land and Chutes and Ladders.

The goal of the Game of the Goose, also known as Juego de la Oca, is to be the first player to land on the last numbered square, casilla. The board consists of a track with consecutively numbered spaces (usually 63). The game's instructions will be made available in English and Spanish as **we strive to make this game equitable and accessible for the people of our community.**



The long-form of the RRAD Game of the Goose is designed to be played by teams of people and will be a fun destination for school field trips, scout troops, birthday parties, or family reunions. Each team will bring two dice and move forward the sum of their rolls. When they land on one of the 13 goose squares, they get to move forward the same number they rolled again. Other wild squares in the game are: a bridge, a maze, a skull. They will be depicted with images of Lick Run, the Dunham Disc Golf Course and the Potter's Field — familiar to most Westsiders.

There are games and activities within the game, for people with less time, less years, less mobility, less WiFi. For instance, there will be exercise prompts on many mosaic game squares at Dunham on the 1.5 mile, paved trail around the disc golf course, while a challenge to slow down and reflect with images of native plants and animals will appear on game squares at Rapid Run.

Community engagement is a major focus as we create the game pieces and promote the game once it is installed. We have partnered with Dunham Recreation Center to host mosaic making workshops for youth, seniors and families. An Instagram handle will be created to update participants about the project and share celebratory selfies for those that complete the game. A webpage will be created to teach users how to play the game in its entirety, and QR codes will be included to instruct those with devices and WiFi on how to play the game, which could take half a day. Since the game covers a lot of ground, players will be encouraged to wear comfortable shoes and bring snacks.



Activities and games within the Game of the Goose are:

- 18-20 exercise challenges
- 4-6 squares that challenge players to find images within a game square (see above)
- 4 scavenger hunts — one within each section of the game.
- There will be a tech component to the game with a web page and Instagram account and geocaching. We are very interested in trying to appeal to older kids and those young at heart . There will be seasonal , off-the-gameboard scavenger hunts ;where players post pictures of items on a list (ie: acorn, round rock, coneflower, etc) on Instagram.



The Game begins at Dunham Recreation Complex in the 1000 Hands Playground where the theme of the artwork is play.

The second loop takes players around the Recreation Center where mosaic game squares will address the history of the site. This loop will take players past the Miracle League Baseball Pavilion and the Otto Armleder Aquatic Complex.

The final stretch at Dunham, is the longest and most challenging section of the game. It spans the roughly 1.5 mile paved trail around the disc golf course.

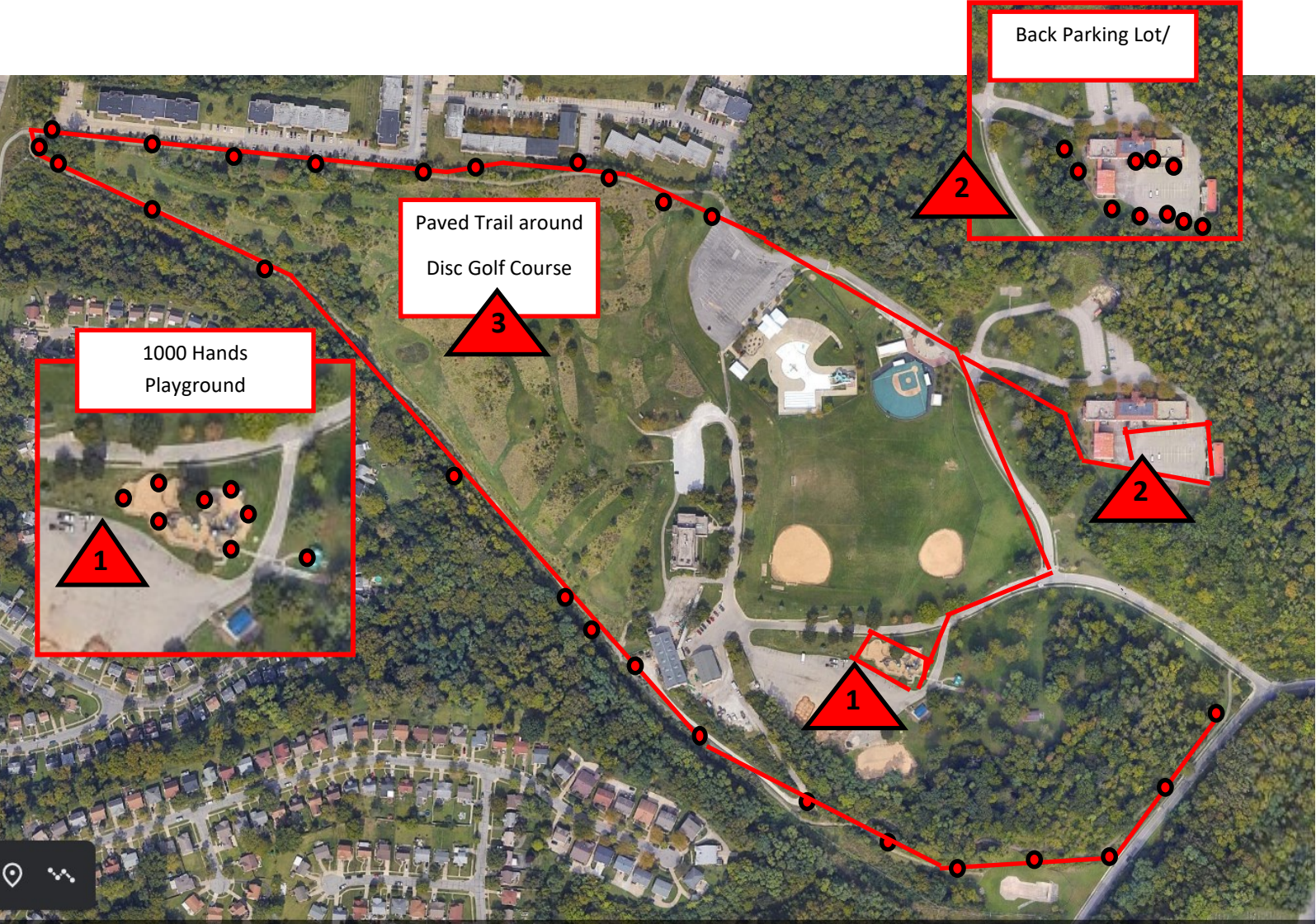
The mosaic squares in this section prompt players and visitors to do different exercises and stretches. This is an example of one of the activities within the game.



DUNHAM RECREATION COMPLEX ROUTE

The Game of the Goose is clustered in 3 areas, incase people want to drive.

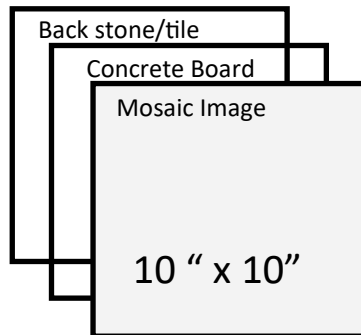
LOCATIONS of mosaic game squares are indicated with red dots



DESIGN AND INSTALLATION TECHNIQUES AT DUNHAM

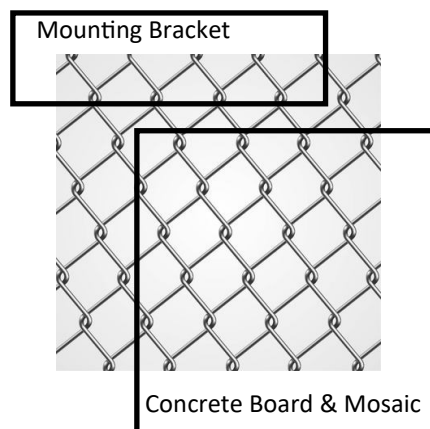
The Game of the Goose will begin at Dunham. There will be 44 (10 " x 10") mosaic-art game squares in the park. Some of the squares will be **mounted with thin set mortar directly to:**

- ◇ walls of buildings
- ◇ flat tops of retaining walls
- ◇ Stair risers
- ◇ Curbs



Others mosaic game squares (see image above) will be **mounted indirectly to** fencing and existing sign posts. These tile images will be attached to concrete board when they are proposed as signs. The width of the squares will vary as the tile width varies, but will be 1.5-2 inches thick. The back of the concrete board would be painted and sealed, or have a large stone or porcelain tile mortared to the back. These flat mosaics would be bolted or screwed to:

- ◇ Aluminum Fencing
- ◇ Wood or metal poles, posts and bollards



Bracket will be pressure treated lumber or an aluminum angle

Approximately 20 flat mosaic images will be hung on chain-link fences (see image above), especially on the bike path around the Dunham disc golf course. In that case the mosaic on concrete board would be fastened with screws to a mounting bracket on the opposite side of the fence.



At Rapid Run the mosaic squares will be attached to cement pads under the 16 + benches. These designs will be dedicated to local plants, birds, bugs and butterflies and don't be surprised if you see the cement bases of some benches bedazzled with tile and other tesserae. The game will end at the reflecting pond.



Rapid Run Parking

Rapid Run Road

Guerle-y Road

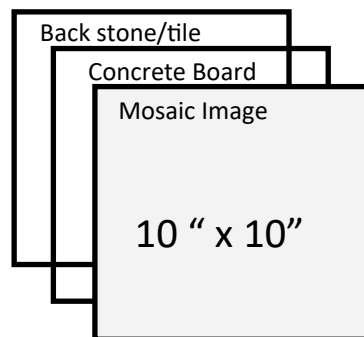
RAPID RUN PARK

DESIGN AND INSTALLATION TECHNIQUES AT RAPID RUN

The Game of the Goose will end at Rapid Run Park around the pond. Almost all of the 19 (10" x 10" x approximately .5") squares will be mounted with thin set mortar directly to the sidewalk under 16+ benches situated on the cement path around the park's playground and water features. This will go a long way in ensuring the safety of the art work, and the grounds keeping equipment.

As a bonus, there will be assorted mosaic decorations adhered with thin set to:

- ◇ cement bench legs
- ◇ light pole cement bases,
- ◇ stair risers
- ◇ curbs



Two game squares (see the image above) will be attached to existing sign posts at Rapid Run Park. The width of the squares will vary as the tile width varies, but will be 1.5-2 inches thick.