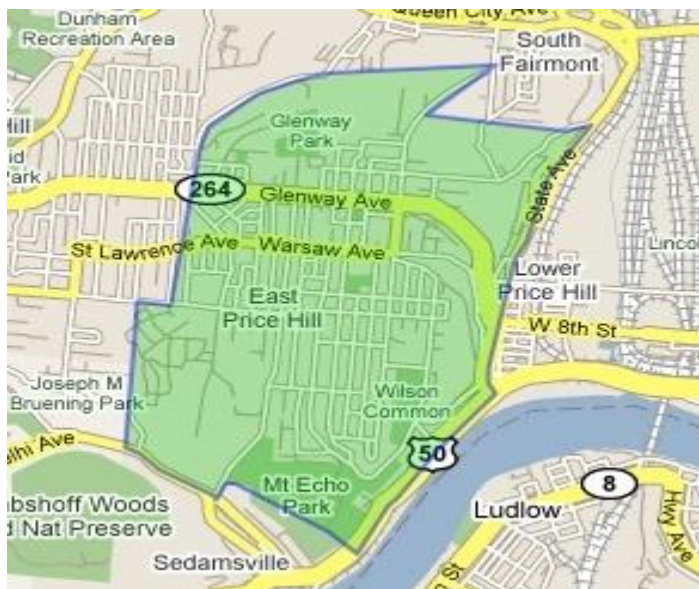




East Price Hill
Improvement Association

WELCOME TO EAST PRICE HILL



WE ARE ON THE RISE IN THE WEST

OVERLOOKING DOWNTOWN CINCINNATI
THE OHIO RIVER VALLEY AND
NORTHERN KENTUCKY

WE ARE

Neighbors from all races, ethnicities, ages, religions,
orientations, and income levels working together

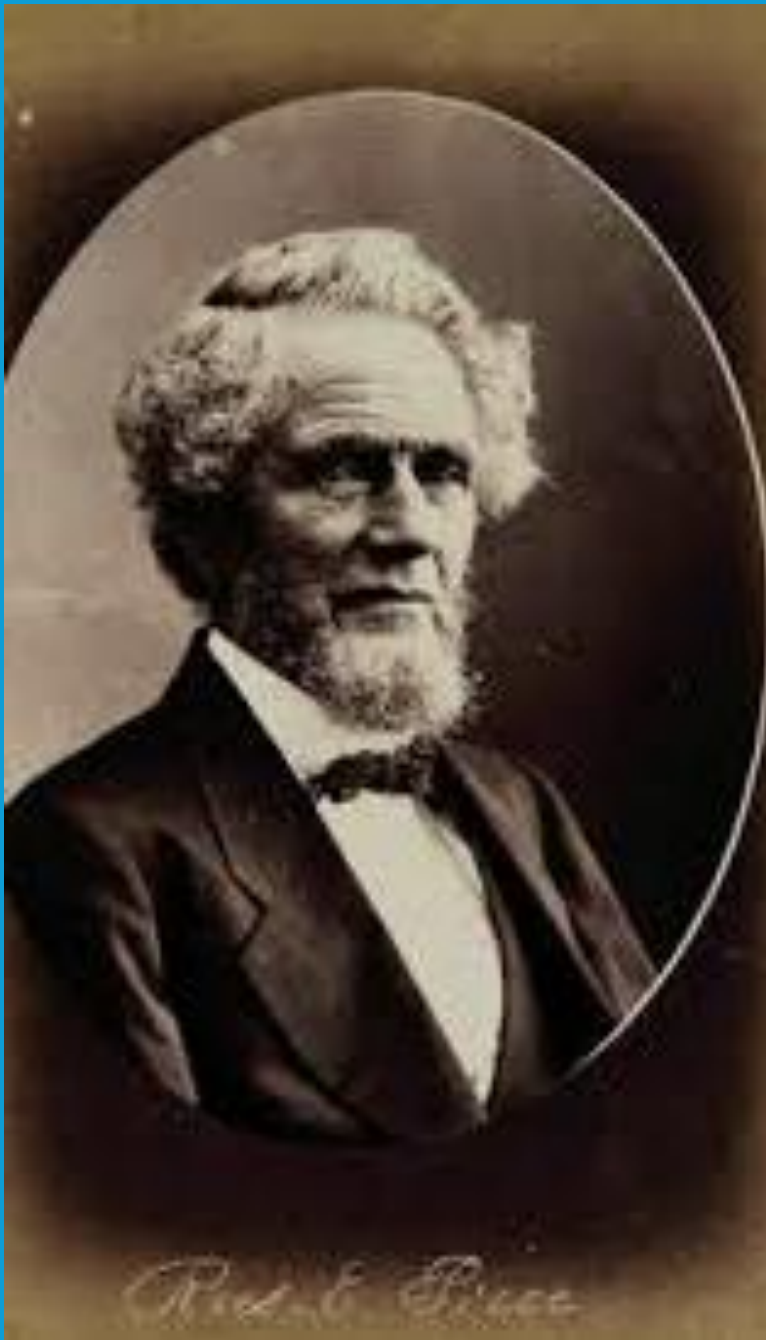
- Proud of our history
- Cultivating our community
- Embracing our diversity
- Searching for solutions
- Expanding our horizons
- Valuing our residents
- Welcoming new neighbors
- Building our future



Brief History

- When Europeans arrived on the Ohio River, both Shawnee and Miami Native Americans were living in the vicinity.
- Area was originally called Boldface Hill after Chief Boldface who was a Miami Chief. The areas up on the hills and bluff was heavily forested and both tribes used it as a hunting ground for wild game.

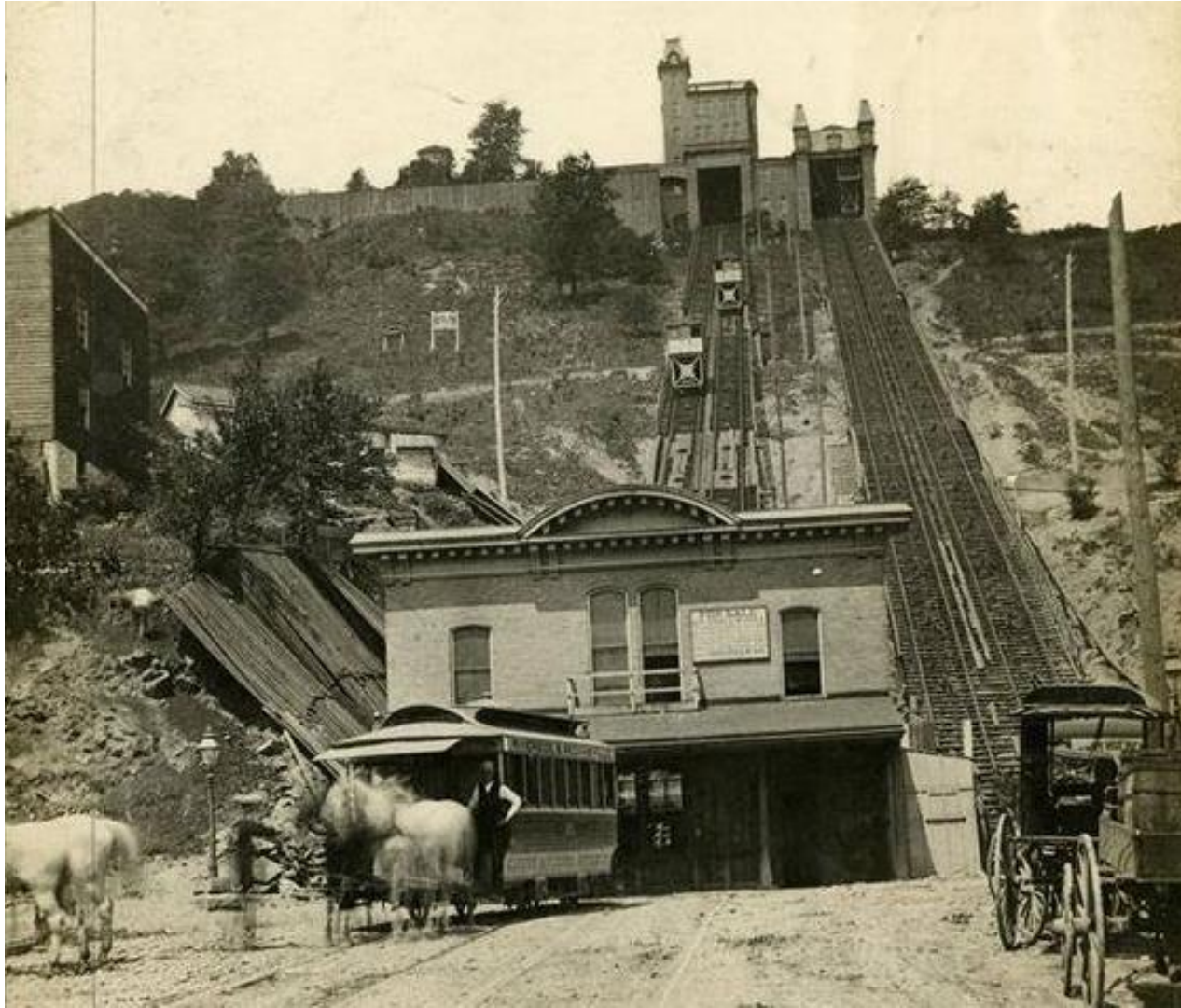




General Rees E. Price

(1795-1877)

- Area later named after Rees E. Price who built his house where the Incline Theater now stands. Rees E Price and his wife Sarah Matson raised their eight children there.
- He was a general in the Ohio Militia and was often called General Price. General Price was a staunch abolitionist and believed in women's rights.
- General Price traveled to Washington, and in the Senate chamber, denounced the Senate actions on slavery. His outburst caused him to be briefly imprisoned and labeled as a felon.
- General Price and his sons built the original Price Hill Incline from West Eight Street to what is now Olden View Park.



BUILT IN 1874, THE PRICE HILL INCLINE FACILITATED THE EXPANSION OF CINCINNATI TO THE WEST. THE ABILITY TO QUICKLY MOVE PEOPLE, HORSES, WAGONS, AND MATERIALS FROM THE CITY BASIN TO THE TOP OF THE HILL 350 FEET ABOVE OPENED THE HILLTOP TO DEVELOPMENT AND HOMEOWNERSHIP. OVER 1 MILLION PASSENGERS A YEAR RODE THE PRICE HILL INCLINE BETWEEN 1889 AND 1894 WHEN RIDERSHIP PEAKED AT 1,511,409. THE DEVELOPMENT OF STRETCARS AND AUTOMOBILES ERODED RIDERSHIP, AND THE PRICE HILL INCLINE CLOSED IN 1943 AFTER ALMOST 70 YEARS OF SERVICE.

THE INCLINE DISTRICT



Incline District of East Price Hill

Restaurants & Other Eateries

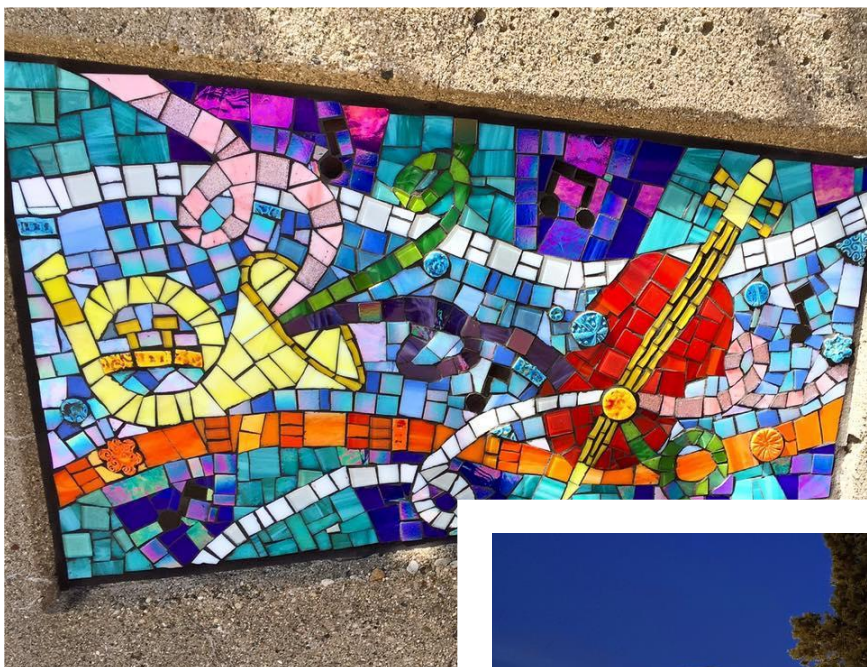
- Primavista
- Incline Public House
- BLOC Coffee Company
- Somm Wine Bar
- Vera Cruz
- Bold Face Dairy Bar



Entertainment

- Incline Theater
- ARCO Event Center





**EAST PRICE HILL
IS SO MUCH
MORE THAN
THAT!**

Schools in East Price Hill, West Price Hill and Lower Price Hill

PUBLIC

Rees E. Price

Roberts Academy

Carson School

Covedale Elementary

Oyler School

Dater High School

Western Hills Academy

PAROCHIAL

Holy Family

St. Lawrence

St. Theresa

St. Williams

Elder High

Seton High

CHARTER

Cincinnati Digital Academy

Romero Academy Resurrection

CPS has one of the fastest growing enrollments in SW Ohio, adding about 500 new students per year, especially in grades 7-12.

The West Side has seen the highest increase in new students, especially in Price Hill.

East Price Hill Parks & Greenspaces

OUR FAVORITE COLOR IS GREEN!



- **Mt Echo Park**, established in 1908, provides one of the best sweeping views of downtown Cincinnati, the Ohio River, and Kentucky. It is a favorite site for wedding photos. Enjoy swings, a newly refurbished children's play area, tennis/pickleball, basketball courts and fabulous hiking trails! Favorite community activities in the park include **Easter Sunrise Mass**, the **Riverfest West** festival where families lay out their blankets to reserve their spot to see the Labor Day Fireworks, drum circles, yoga in the park, and Mt. Echo Sunrise and Sunset Celebrations.
- **Olden View Park**, sits on the former site of the Price Hill Incline on Matson Place, and offers an unparalleled view of the city. Situated between the Queen's Tower, home of the Primavista Restaurant, and the Incline Public House, this small city park is the site of several summertime concerts and is enjoyed by residents and visitors alike.

5 MINUTES FROM DOWNTOWN



- **Imago Woods** - Imago is an environmental conservation organization whose mission is to foster a deeper harmony with Earth by providing educational experiences, creating opportunities for discussion and community building, and conserving natural areas. They offer a variety of programming on sustainability and nature preservation, including after school programs and summer camps.

- **Enright Urban Eco Village** is a community within the community whose mission includes being ecologically responsible, cultivating community, and practicing wellness. Some of their projects in the community include farming, selling plants, and operating a market.



East Price Hill Parks & Greenspaces



- **Dempsey Park** was originally built as part of the civic heart of the community on a block that includes the Price Hill Library and the original District 3 Police Station. It now includes the Price Hill Recreation Center, an outdoor swimming pool, playgrounds, two community gardens, a futsal court, and ball fields.

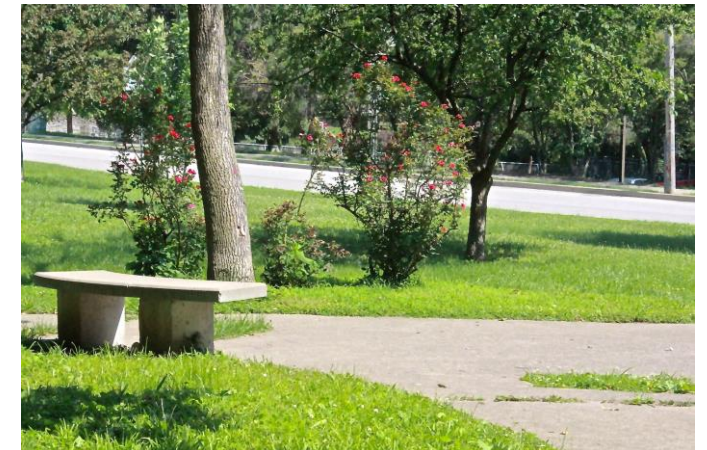
- **Wilson Commons** is a small and beloved neighborhood park that overlooks downtown Cincinnati, the Ohio River valley, and the beautiful hills of Northern Kentucky. The park has a walking trail and a play area. It is the home of the **Eggcellent Eggstravaganza**, an annual springtime celebration for children ages 3-10 and their adults which is held the Saturday before the Easter weekend. Children participate in egg-tivities and are visited by and learn about some special animal friends.





- **Glenway Woods**, a nature preserve of 30.244 acres at the end of Ross Avenue in East Price Hill, began as the result of Price Hill citizens joining forces to save the area from indiscriminate physical development. A recent project there allow surface runoff to flow to the Lick Run Greenway. It will be the future home of **Horses on the Hill**, a program of BLOC ministries which will provide a unique learning environment incorporating Equine-assisted activities, a riding program, and urban farming and horticulture to local youth and families.

- **Dandridge Garden** is a small, restful park across Grand Avenue from Holy Family Church, and across West 8th Street from the Senior Chateau. It is named for Raymond G. Dandridge (1883-1930), a noted African-American poet, who lived nearby at 814 Chateau Avenue, which crosses West 8th Street one block east of the park.



- **Olden Tot Lot** is a Cincinnati Recreation park on Warsaw Avenue in the heart of the Warsaw Avenue business district.



OTHER PARKS & GREENSPACES

3 Neighborhood Gateways

Glenway (Tank) Park

Mayfield Park

Bird Sanctuary

Whittier Gardens

Price Hill Library Renovation



**Councilmembers-
You are invited!!**

**PLEASE JOIN US
APRIL 9th
FOR THE RIBBON CUTTING!**

- The Price Hill Library closed on July 3, 2018, due to a ceiling collapse caused by water damage.
- The building was originally considered for demolition.
- Thanks to community support, this iconic building was saved and is being augmented. The current renovation blends the historic building with modern features. The renovation nearly doubles the building's size and provides accessibility and modern amenities and services.
- The Price Hill Library will be reopening on **April 12, 2021.**

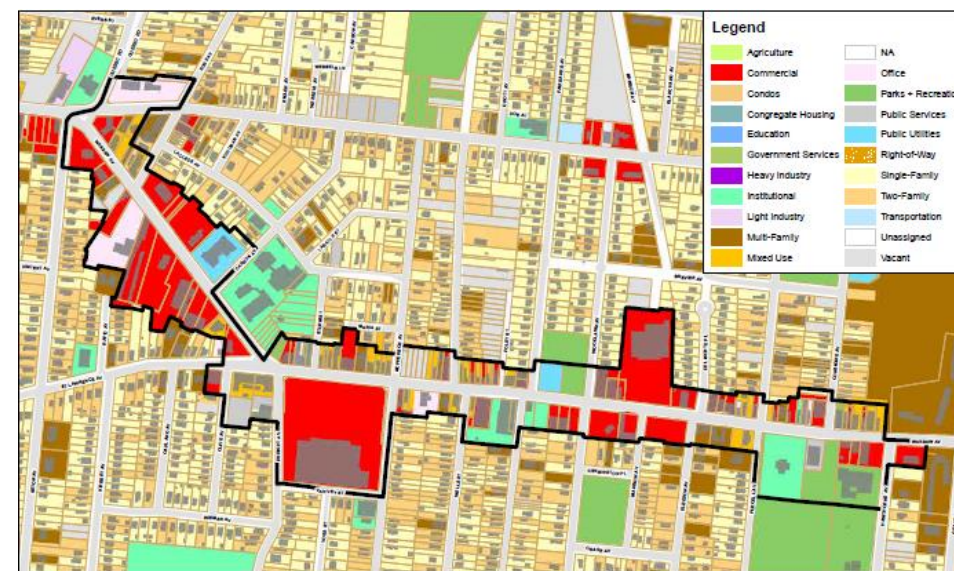


Approved by Cincinnati City Council February 22, 2018

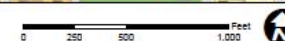
- **Neighborhood Business District Plan**
- **Enhance and Attract Businesses**
- **Draw People to Warsaw Avenue**
- **Develop to Meet Community Needs**
- **Build on Community Assets**

Youth, Family, Arts, Architecture, History, Culture,
Price Hill Library, Price Hill Recreation Center,
Dempsey Park, MY Cincinnati, Firehouse

- **Getting to and Around Warsaw**
Traffic Calming, Transportation, Accessibility
- **Engage Community**
Partnerships, Collaboration, Creation



Warsaw Avenue NBD: Existing Land Use





Price Hill Will is a nonprofit community development corporation serving the neighborhoods of Lower, East, and West Price Hill in Cincinnati, Ohio since 2004.

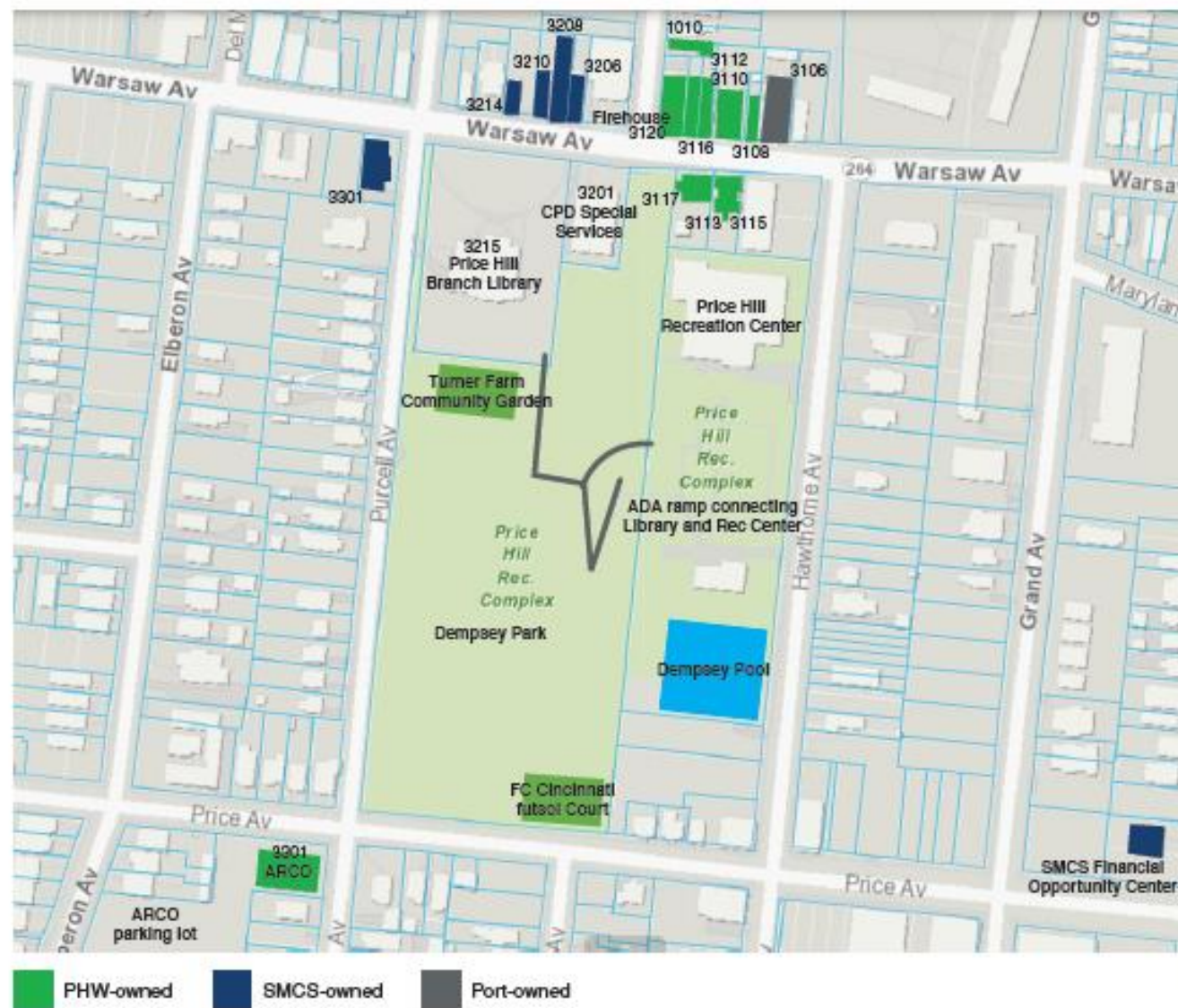
Our mission is to improve the quality of life for all residents of Price Hill using an equitable, asset-based approach to physical, civic, social, cultural, and economic development. Our programs connect residents, particularly immigrants, BIPOC, and residents with lower income or lower formal education levels, to resources, programming, neighborhood engagement opportunities, and leadership development.

PRICE HILL COMMUNITY DEVELOPMENT CORPORATION

Warsaw Corridor revitalization



Warsaw Ave. Creative Campus (EPH)



Warsaw Avenue Firehouse



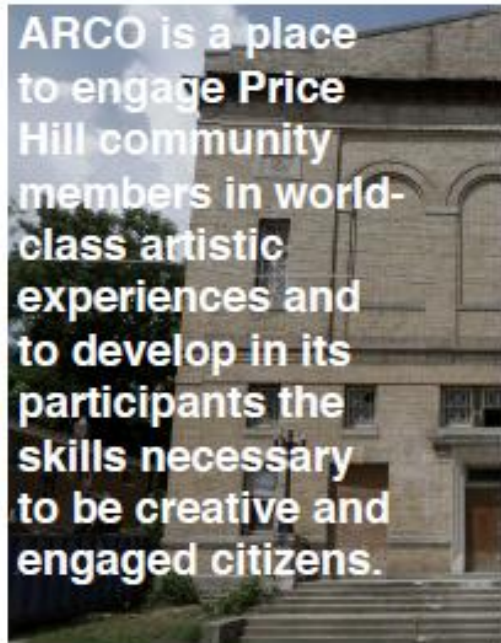
Music for Youth in Cincinnati (MYCincinnati) is a free after-school classical music program that offers students in Price Hill the opportunity to study an instrument and play in orchestra. Students can choose from violin, viola and cello, and will also sing, learn to read music, and participate in other music-related activities.



The Price Hillharmonic is a neighborhood orchestra that rehearses once a week. It is open to adults living in Price Hill, with or without prior musical experience, who come together to play music and build community.

ARCO

ARCO is a place to engage Price Hill community members in world-class artistic experiences and to develop in its participants the skills necessary to be creative and engaged citizens.





Price Hill
WILL

PRICE HILL

PRICE HILL HAS WITHSTOOD MUCH TO HELP BUILD CINCINNATI



East Price Hill West Price Hill Lower Price Hill

Price Hill Neighborhoods
account for **3 out of 52**
neighborhoods.

3/52

10% of Cincinnati's
population reside in Price
Hill

10 %

Cincinnati Public Schools



CPS has one of the fastest growing enrollments in SW Ohio, adding about 500 new students per year, especially in grades 7-12. The West Side has seen the highest increase, especially in Price Hill where schools are overcrowded.

FUN FACTS ABOUT EPH

- East Price Hill is the most diverse community in Cincinnati.
- 25% of the East Price Hill community does not have access to a vehicle.
- 2 of the 5 major roads connecting the west side to downtown run through East Price Hill



Brownfields

After the Cincinnati Barrel Company burned down in 2004, the EPA determined that caustic chemicals, such as 2-propanone, 2-butanone, benzene, trichloroethene, and toluene were in the water supply system, air, and ground in Price Hill. The EPA ordered an immediate demolition of the building and called it a public nuisance. It took seven years and millions of dollars to clean up the site.

Mill Creek MSD

The Mill Creek MSD plant in Lower Price Hill treats 100 million gallons of sewage each day. The Mill Creek Plant is MSD's largest and is closest to residential areas. The Mill Creek Plant also treats the county's trucked industrial, commercial, and sanitary waste. It handles 70 % of Hamilton County's sewage, in an urban environment where odors, spills, and the effects of chemicals and incineration have been a concern.



70%

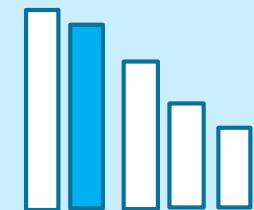
Scars of Heavy Industry



West Side has borne more than its fair share of heavy industry.

In the 19 mile stretch WEST from Hilltop Concrete to Addyston, there are 24 riverside terminals and businesses, including 2 petroleum terminals, 1 water treatment plant, and multiple terminals holding cancer causing chemicals. In the 25 mile stretch EAST from Hilltop Concrete, there are only 3 terminals (including Hilltop).

Childhood Asthma



Price Hill is in the Medium-High Quantile

Cincinnati Children's Hospital Admission Rate for Childhood Asthma by 91 Hamilton County Neighborhoods. Price Hill is in the 2nd highest quantile.

CHALLENGES

- Improve the wellbeing of our residents
- Continue to build on our diversity of people and culture
- Engage people in community
- Honor the history of our neighborhood
- Attract people and businesses to the Warsaw Avenue Neighborhood Business District
- Better utilize and improve housing stock and reduce vacancies
- Attract new residents and families throughout the neighborhood
- Attract development without displacing current residents
- “Raise all boats”



East Price Hill

A diverse neighborhood proud of its culture and heritage and focused on its future.

