



# City of Cincinnati

801 Plum Street  
Cincinnati, OH 45202

## Agenda - Final

### Healthy Neighborhoods

*Chairperson, Jan-Michele Kearney*  
*Vice Chairperson, Victoria Parks*  
*Councilmember Anna Albi*  
*Councilmember Scotty Johnson*

---

Tuesday, May 13, 2025

12:30 PM

Council Chambers, Room 300

---

#### PRESENTATIONS

#### SPEAKERS

#### FATHER'S UPLIFT

Dr. Charles Daniels, CEO

Samantha Fils-Daniels, COO

#### FLYWHEEL

Donna Zaring, Executive Director

Valda Freeman, Founder & CEO, A.A.R.O.N. Wearable Technology

Brandon Reynolds Founder & CEO, B The Keeper

Ben Booker, Co Founder & Executive Director, Urban Farming Initiative

#### AGENDA

#### PRESENTATIONS

- [202500975](#) **PRESENTATION**, submitted by Vice Mayor Jan-Michele Lemon Kearney regarding *FATHERS' UPLIFT* Mission to Provide Culturally Relevant Support Through Therapy, Coaching, & Community Engagement.  
**Sponsors:** Kearney  
**Attachments:** [Presentation](#)
- [202500973](#) **PRESENTATION**, submitted by Vice Mayor Jan-Michele Lemon Kearney regarding *FLYWHEEL*, a Social Enterprise Hub.  
**Sponsors:** Kearney  
**Attachments:** [Presentation](#)

**ADJOURNMENT**

A short horizontal line with a blue segment on the left and a yellow segment on the right.

# Fathers' UpLift





## Our Challenge



Black and Hispanic men are nearly twice as likely to go without mental health services as their white counterparts.



Only 5% of the doctoral level psychology workforce are Black.

The mental health field has long failed to meet the needs of Black and Brown fathers, often due to stigmatized environments and limited understanding of their life experiences.

Schools of social work and psychology rarely teach culturally sensitive care or offer hands-on experience with Black and Hispanic men from marginalized communities.

BIPOC fathers disproportionately experience high rates of trauma, poverty, addiction, and incarceration. For fathers without strong support systems, these challenges can seem impossible to overcome. We see fathers enter our doors dealing with multiple stressors, shame and pain.

They want to be in their child's life – but don't know how.

# Vision

Our work today will sow the seeds for a future where every father and their family can thrive in a supportive and understanding environment.

We have the opportunity to support exponentially more fathers by reshaping the institutions and structures that are meant to serve the mental health of Black and Brown fathers and families but so often fall short.



# Mission

Fathers' UpLift is succeeding where traditional service providers fail. Through our blend of therapy, coaching and community engagement, we provide accessible and culturally relevant support, helping more men of color embrace mental health services without fear or stigma.

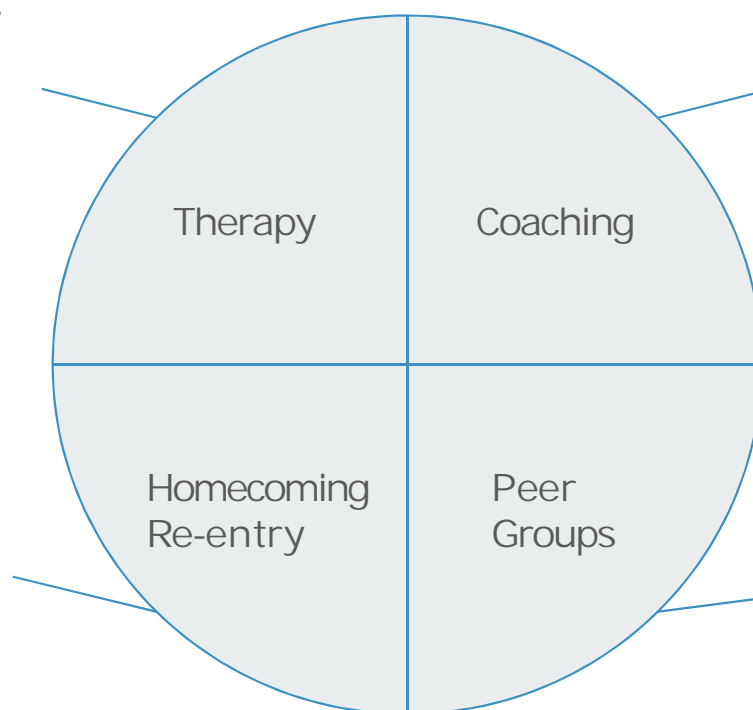
For over a decade, we've been serving Black and Brown fathers through our unique blend of services focused on fatherhood and mental health. Our programs have helped thousands of fathers re-engage with their children and improved life outcomes.



# Holistic Healing Journey

Our strength-based clinical therapy services are provided by clinicians who share our population's background

Programming designed to support men as they re-enter and rebuild their lives following incarceration



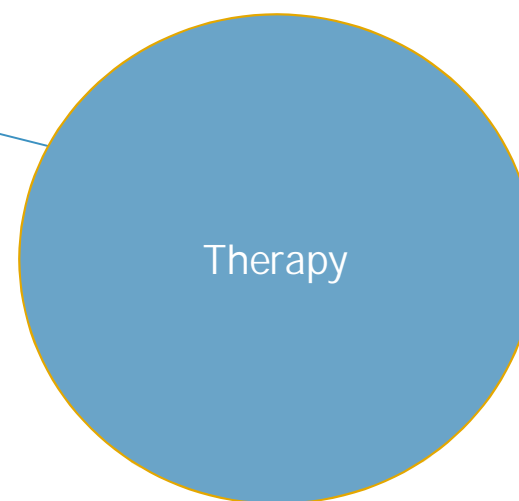
One-on-one peer support provides personal mentorship, guidance, and assistance with job searches, custody challenges, support for youth, families, and more

12-18 week courses covering topics such as managing emotions, parenting, housing, employment, and more

# Transforming The Field

---

U.S.T.R. Fellowship: The United States Therapist Recruitment Fellowship offers a \$15,000 stipend, mentorship, licensure prep, and clinical supervision. After completing the fellowship, participants become part of a national community of BIPOC clinicians dedicated to giving back to communities of color across the nation. This is an incredible chance to make a real difference while advancing the careers of our students.





# Why Cincinnati? (A Valuable Addition)

Top 4 Causes of Death: Closing the gap for the 4 causes would reduce disparity by half.

Causes	Excess Years of Life Lost	Premature Deaths
#1 Drug Overdose	5,403	580
#2 Infant Mortality	4,131	133
#3 Assault (Homicide)	3,500	207
#4 Heart Disease	3,428	1,060

# Why Cincinnati? (A Valuable Addition)

Close Proximity: Our location of Impact

Direct Impact	Indirect Impact
#1 Drug Overdose	#2 Infant Mortality
#3 Assault (Homicide)	#4 Heart Disease



# Workforce Development

The future of Mental Health





## Provider Shortage Area (Primary Care, Dental & Mental Health)

Hamilton County is listed as a federally designated Health Care Provider Shortage Area in the following categories:

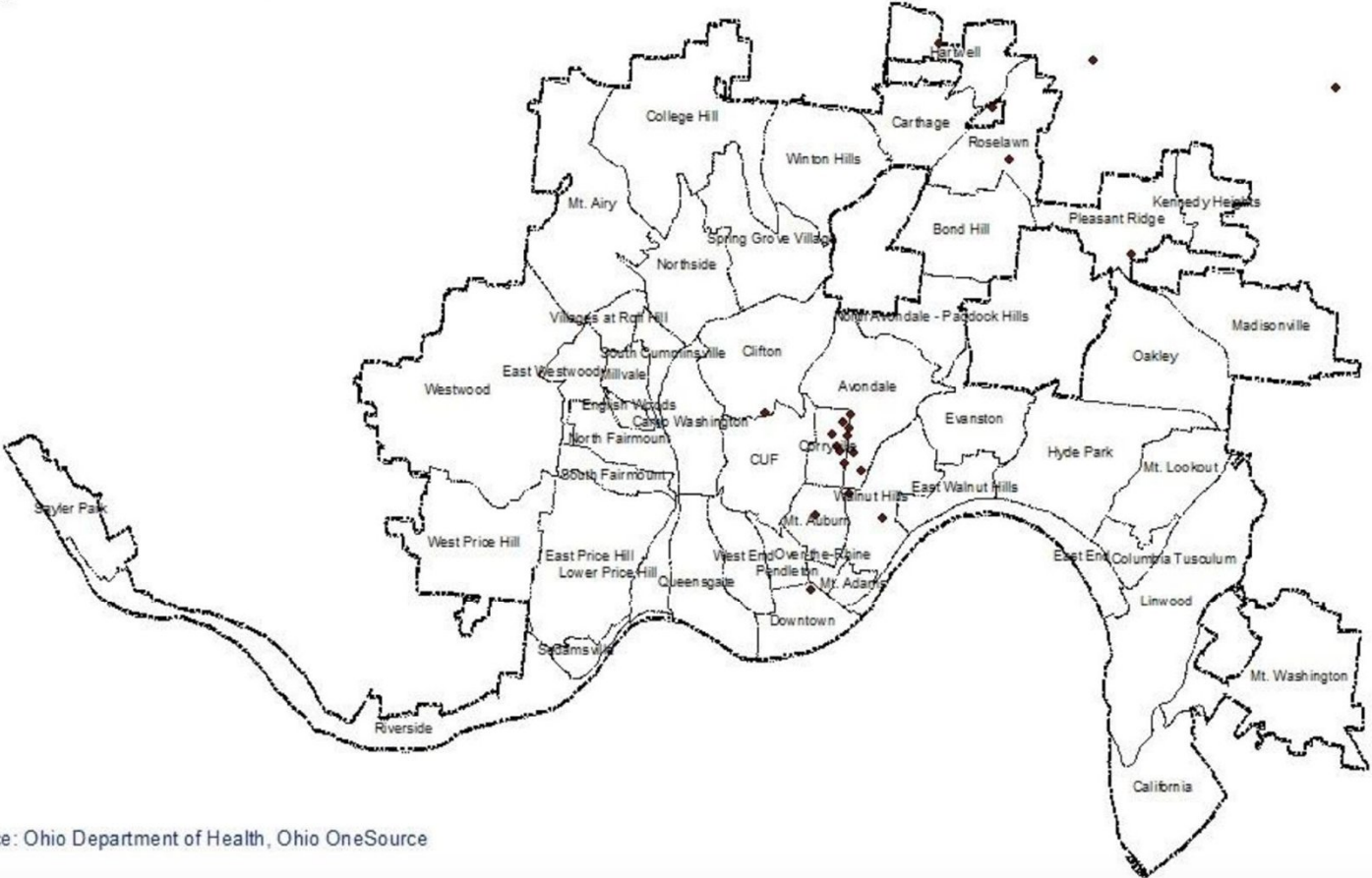
1. Primary Care Health Professional Shortage Area
2. Dental Health Professional Shortage Area
3. Mental Health Professional Shortage Area

***These findings reflect the national trend pertaining to the shortage of providers, especially the shortage of providers of color.***

# Map 30: Cincinnati Licensed Mental Health Service Providers (2023)

## Legend

- ◆ Mental Health Providers
- ▭ Cincinnati City Boundary
- ▭ Cincinnati Statistical Neighborhood Approximation (SNA) Boundaries



Source: Ohio Department of Health, Ohio OneSource

# The Participant

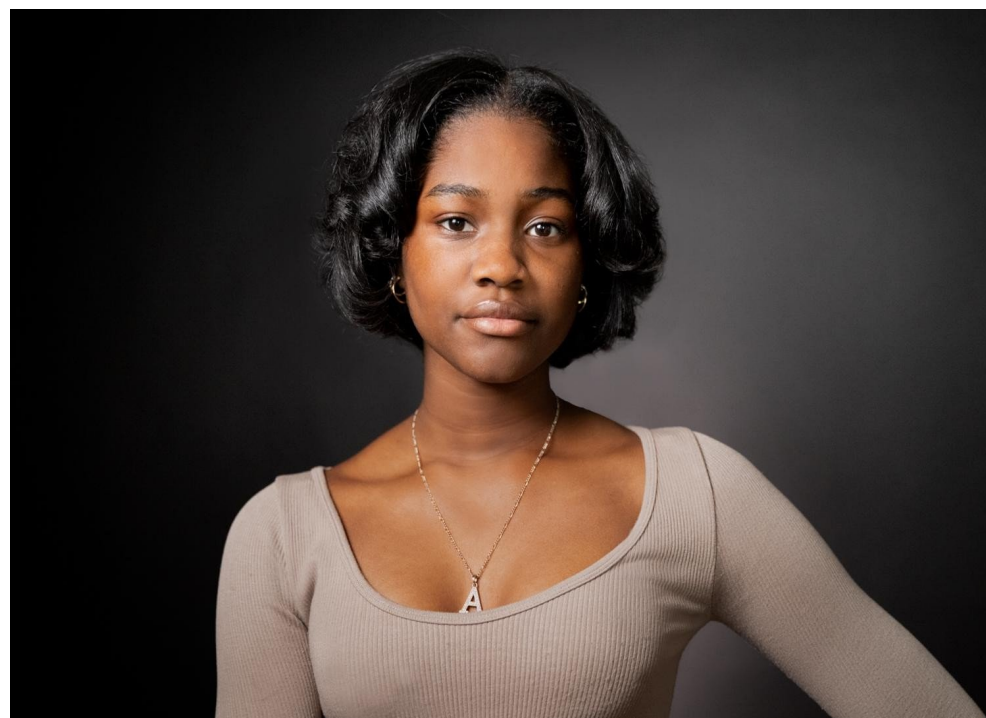
---

Fathers (89%) who are Black and/or Hispanic (over 80%) with at least one child (most have up to 3 children under the age of 6 or between 6-18), are not the primary caregiver of their child (over 60%).

Identify as religious or spiritual individuals (64%) and are currently receiving state benefits. Live in an Apartment, Sober Home, Group Home, or on the Streets.

Most commonly used substances among the fathers we serve are Alcohol (77%), Marijuana (78%), Nicotine/Tobacco (47%), and Cocaine (40%).

Supporting Single Mothers and Their Children: We provide essential assistance to their families, ensuring they have the support they need in times of need.





# Client Testimonial

Andre's Story





## Impact

Andre's story reflects the experiences of many other fathers in our program.



88% of fathers served reported improved relationships with their children



86% of fathers served reported active and consistent engagement with their children



91% reported being "mostly" or "completely" hopeful about their future after counseling



# Envisioning Partnership

Program	Vision	Rationale
Clinical (Individual & Groups)	Individual and Peer Groups (Pre-Father Care: Prenatal Care for Fathers, Manage. Emotions, Homecoming Groups)	Support for men entering/re-entering fatherhood (during pregnancy, post-incarceration and absence, if applicable)
Coaching (Direct/Indirect)	Coaching Support (Focus: Fatherhood & Re-Entry)	Coaching for fathers at every stage of their journey as parents.
Workforce Development (Fellowships)	Add to the Field of Mental Health Providers serving Cincinnati.	Fellows are trained and prepared to practice as additions to the sector.
Homecoming	Support for fathers within the carceral system.	Equip fathers with resources and a plan beginning 3-months prior to re-entry.
Transportation	Eventually remove the barrier of transportation once situated.	Provide transportation vouchers/ transport clients to and from our offices.

# Envisioning Partnership

Partnership Opportunities	Rationale
Mother Serving Organizations	Teen mothers (or older) direct us to fathers. (Aim: Provide resource to fathers involved and sharing of tools they can use to be an <b><i>ally to mothers while addressing their needs concurrently</i></b> ).
Universities (Schools of Social Work)	Become a hosting/placement site for social work students obtaining their MSW degrees in Ohio (Cincinnati).
Correction Facilities	Provide resources and support to fathers prior to re-entry into society.
Hamilton County Fatherhood Collaborative	We will join the Hamilton County Fatherhood Collaborative to develop and maintain an ongoing relationship with collaborative members (all of whom are serving fathers in some capacity).

## Office Location (Neighborhood)

---

Neighborhood	Rationale
Over The Rhine	<p>We're excited to announce that we are finalizing our agreement for a vibrant office space in the Over The Rhine neighborhood. This prime location serves as a central hub, connecting us to multiple communities and enhancing our accessibility. Stay tuned for more updates on this exciting chapter!</p>

# Sustainability Plan

---

## Sustainability Approach

- Earned Income (Fee-for-Service Model)
- State Contracts (Departments of Public Health)
- Philanthropy

# Questions



# Thank You!



# References

---

American Psychological Association. (2024, July 12). Parental burnout and stress.

<https://www.apa.org/topics/stress/parental-burnout>

Child and Adolescent Health Measurement Initiative. (2016-2017). National Survey of Children's Health (NSCH) data query [Data set]. Data Resource Center for Child and Adolescent Health supported by the U.S. Department of Health and Human Services, Health Resources and Services Administration (HRSA), Maternal and Child Health Bureau (MCHB). <https://nschdata.org/browse/survey/results?q=8440&g=879>

City of Cincinnati Health Department. (2023-2028). Community Health Assessment.

<https://www.cincinnati-oh.gov/sites/health/assets/Documents/Cincinnati-Health-Department-2022-Community-Health-Needs-Assessment-data-update.pdf>

Health Resources and Services Administration (HRSA), Maternal and Child Health Bureau (MCHB). (2020, July). Children with Special Healthcare Needs NSCH Data Brief. <https://mchb.hrsa.gov/sites/default/files/mchb/programs-impact/nsch-cshcn-data-brief.pdf>

# Appendix





# Attachments

---

1. An Evaluation: Evidence Informed Fatherhood Program (EIFP)
2. 2023 Annual Report
3. TED Talk: A Second Chance for Fathers to Connect to Their Children | [Video](#)
4. Meet Dr. Charles and Samantha Daniels | [Article](#)



Startup innovation as a force for social good.

# IMPACT-INSPIRED ENTERPRISE

Flywheel doesn't solve social and environmental problems.

**Since 2011, we've launched 95 Greater Cincinnati startups that do.**



# VISION

A region at the forefront of social entrepreneurship and innovation that **attracts growth, creates wealth and enhances the quality of life for everyone in our community.**



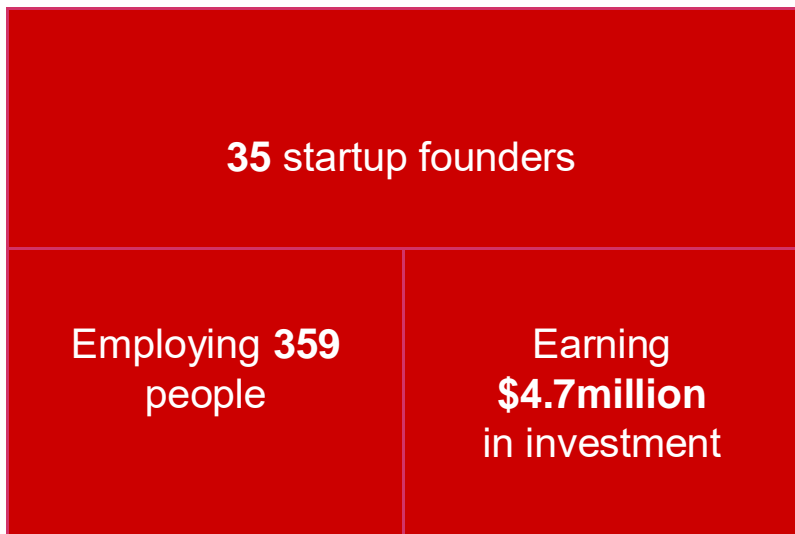
# SOCIAL + ECONOMIC IMPACT = DOUBLE BOTTOM LINE

We equip impact-focused entrepreneurs with knowledge, strategies, skills and connections to develop and expand their businesses and create **lasting economic and social change** in the Greater Cincinnati Region.



Flywheel's Venture Accelerators grow social enterprises that are investable, create jobs and have the power to transform communities.

*In the last 3 years Flywheel accelerators supported:*



Partners:



Flywheel Innovation Labs bring entrepreneurs and the community together to tackle high priority social challenges with innovation.

# HOUSING STABILIZATION HACKATHON

24 finalists

49% Women  
51% BIPOC

9 community and  
business partners

1 game-changing  
solution

**Partners:** Strategies to End Homelessness, Flywheel, 84.51°, Bethany House, Found House, Legal Aid Society, Lighthouse Youth & Family Services, St. Vincent de Paul, YWCA



**TenantGuard** is currently being implemented by Strategies to End Homelessness



# OUR TEAM



**Donna Zaring**  
Executive Director



**Samuel Baker**  
Program Manager



**15 Board Members**  
**30+ Coaches**  
**Dozens of Volunteer Mentors and Partners**





# ELEVATE IMPACT 2025

Join us for Demo Day June 26 @ 1819 Innovation Hub 4 - 7PM

Meet the Cohort:



**CIndependent Film Center**

**Founder:** Allyson West

**The Magical Adventures at Park Clinic**

**Founder:** Dwylett Montgomery

**Prtty Pckup LLC**

**Founder:** Marissa Dumas

**Early Affirmations**

**Founder:** Kia Davis

**From Fatherless to Fearless**

**Founder:** Candice Crear



# EXPANDING OUR IMPACT

- **S.O.A.R. – Social-enterprise Opportunities And Resources Hub**
- **National Social Impact Symposium**

**We are actively seeking support us as we build our vision to create a leading hub for social entrepreneurship.**

## **Ways to get involved:**

- Resource pillar partnerships
- Funding introductions
- Coaching and mentoring
- Program partnerships
- Impact investment and connections



THANK YOU